



**Armstrong**<sup>®</sup>  
World Industries



## Technical Guide

---

**Sincerus**<sup>™</sup>

Linear UV  
Air Purification

# Clean Air Meets Elegant Design

## Introducing Sincerus™ Linear UV Air Purification System

Crafting functional spaces that adhere to Indoor Air Quality (IAQ) standards while preserving design aesthetics can pose a significant challenge.

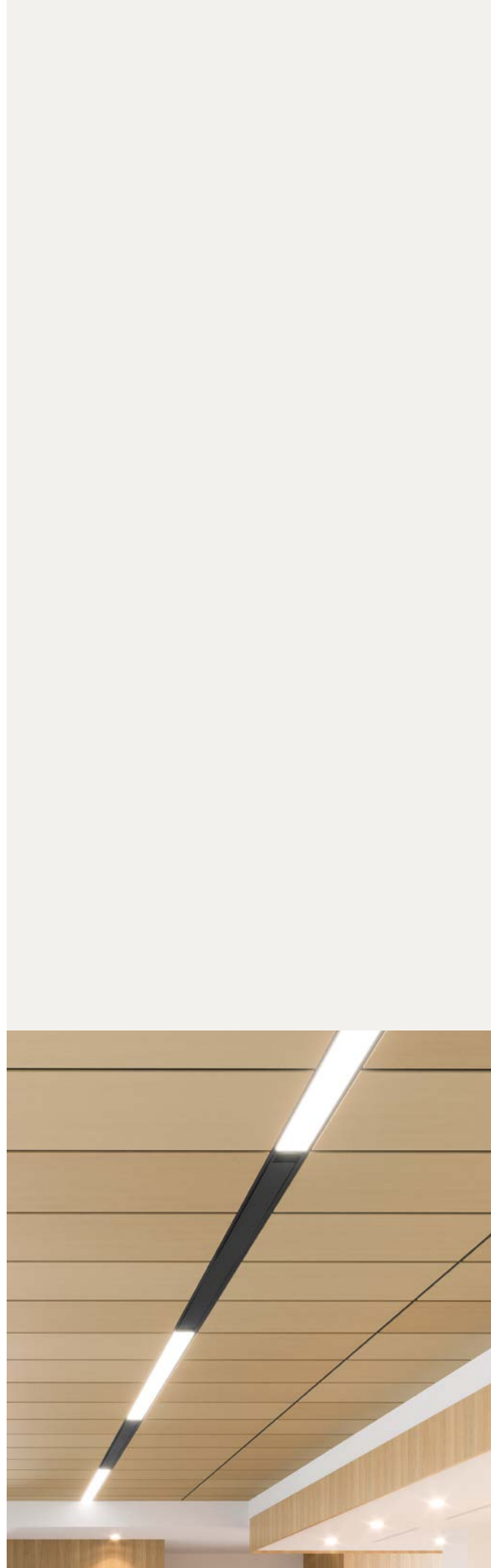
The Sincerus™ system seamlessly integrates filtration and UVC technology, enhancing air purity, elevating indoor air quality, and maintaining a flawless ceiling design aesthetic.

---

### Code Compliance You Can Trust

Meets:

- UL 507 & CSA C22.2 No. 113: Electric Fans, Electrical Safety
- IEC 62471/AEI: Photobiological safety of lamps and lamp systems
- UL 867 Section 40: Electrostatic Air Cleaners, Ozone Testing
- CSA C22.2 No. 187: Electrostatic Air Cleaners, CSA Ozone Testing





Sincerus Linear UV Air Purification

---

## Table of Contents

- 2** Code Compliance
- 4** Sincerus™ Linear UV Air Purification System
- 5** Design
- 6-7** On-center Installation
- 8-9** Offset Installation



# Sincerus™ Linear UV Air Purification System

## Sincerus Linear UV Air Purification System

### Key Selection Attributes

- Neutralizes 99.9% of allergens, viruses and bacteria in the air
- Treats 100 cu.ft./min or 6,000 cu.ft./hr
- Self-contained UV-C chamber hidden in the ceiling plenum for safe use in occupied spaces
- Low plenum height installation
- No HVAC system modification needed
- Minimal maintenance – estimated maintenance cycle filter replacement quarterly, bulb replacement yearly
- 5-year system warranty

### Product Details

- Unit dimensions: 6" × 8" × 7"
- Weight: 56 LBS.
- Power Draw: 170 W
- Voltage: 120VAC – 277VAC, 50/60 Hz

See Sincerus Performance Summary for additional sound pressure information

### VISUAL SELECTION

Item No.	Description	Dimensions
AIR8U	Sincerus Linear UV Air Purification System	96" × 6" × 7"

### PACKAGING

PCS/CTN
1

◆ Refer to the Sincerus Linear UV Air Purification Data Page for color options

Note: Sincerus Linear UV Air Purification System is not a substitute for existing good building air exchange practices or manual cleaning and disinfection practices. Centrally locate and position clean air outtake away from HVAC air returns for maximum benefit.

### INSTALLATION KIT

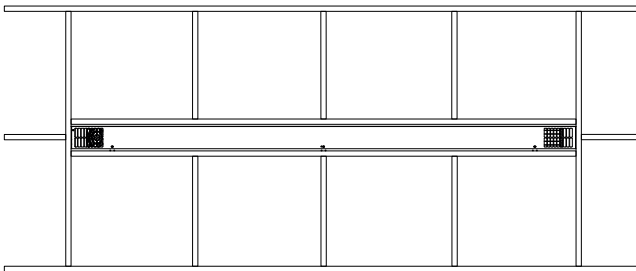
Item No.	Description	Dimensions
Installation Kits	AIR8DACBTK	Sincerus™ Linear UV/AcoustiBuilt® Trim Kits for Drywall

### DETAIL DRAWINGS

Sincerus Linear UV Air Purification System is compatible with all 15/16" and 9/16" grid systems

Sincerus Linear UV Air Purification System

AcoustiBuilt Trim Kit for Drywall



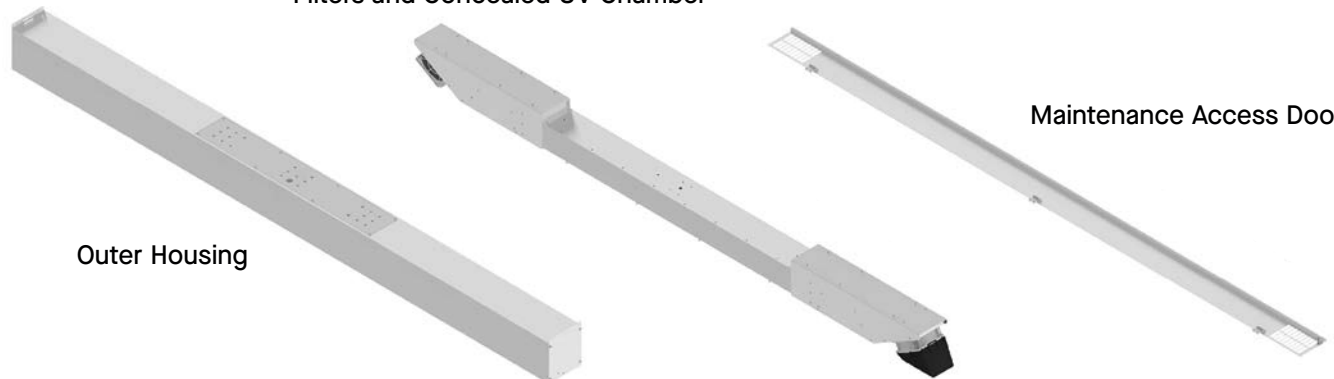
### How Sincerus Works

Air is continuously drawn up and away from occupants, passing through the prefilter in the concealed UVC chamber where UV-C technology neutralizes 99.9% of viruses, bacteria, and fungi. Clean air is then recirculated throughout the space, improving indoor air quality.

Filters and Concealed UV Chamber

Maintenance Access Door

Outer Housing



# Sincerus™ Linear UV Air Purification System Design

## Sincerus Linear Design

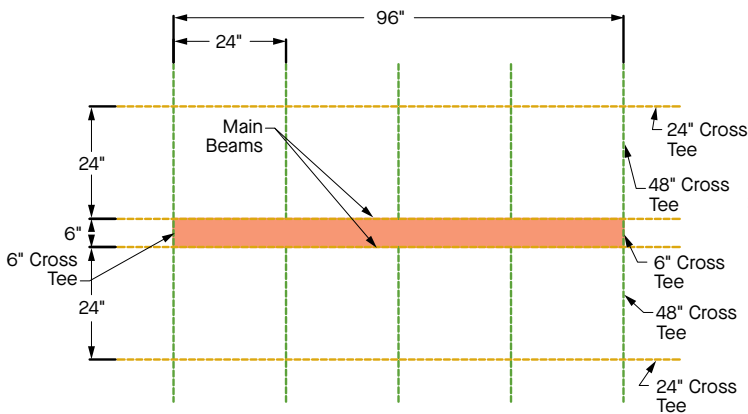
The linear design of Sincerus™ Linear UV Air Purification System lends itself to a variety of installation methods including:

- Technical Zone
- On-center
- Offset
- Drywall or AcoustiBuilt® Seamless Acoustical Ceiling System

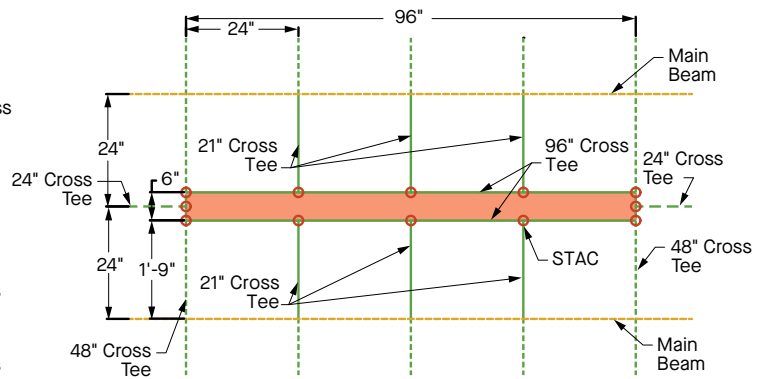
Note: All installation methods are shown in a 2' x 2' layout, but Sincerus can be installed in additional layouts including 2' x 4'. For Technical Zone Layouts refer to the TechZone® Brochure

- Main Beam
- Cross Tee
- STAC

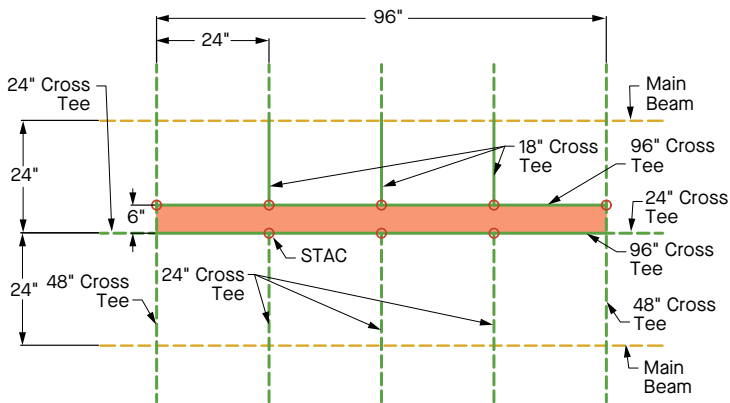
Technical Zone



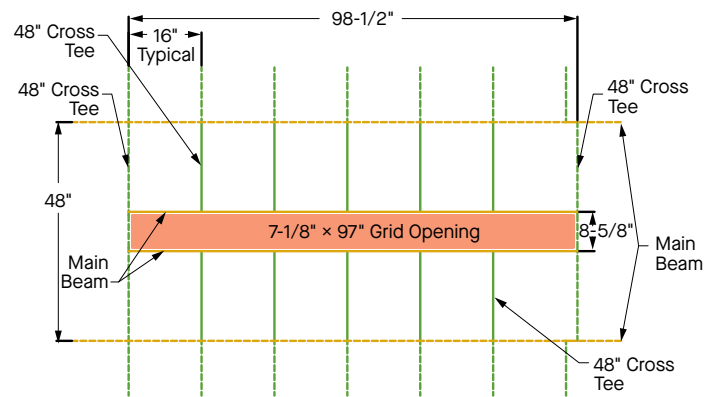
On-center



Offset



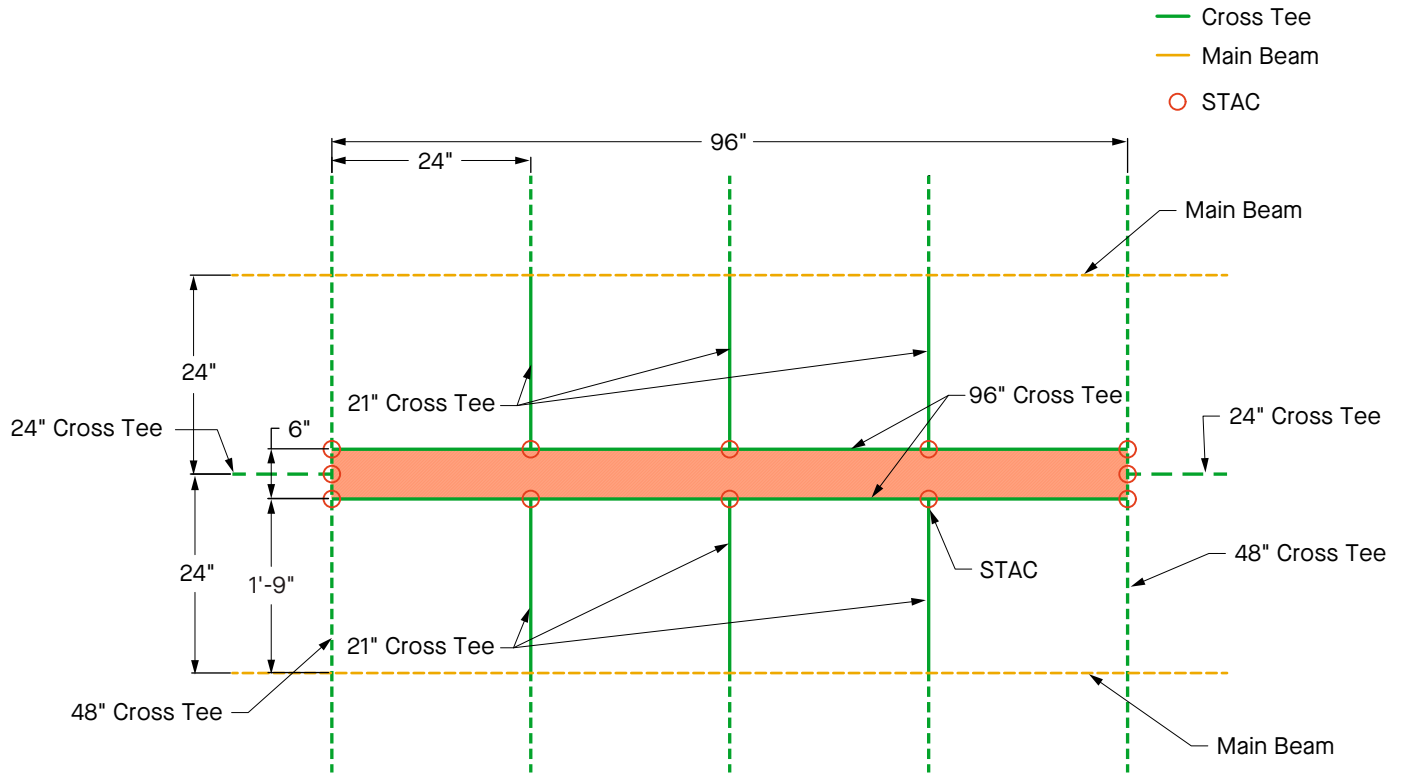
Drywall or AcoustiBuilt®



# On-center Installation

## Sincerus™ Linear UV Air Purification System – On-center Installation

Main beams running parallel to Sincerus™ and running on-center to 2' cross tees



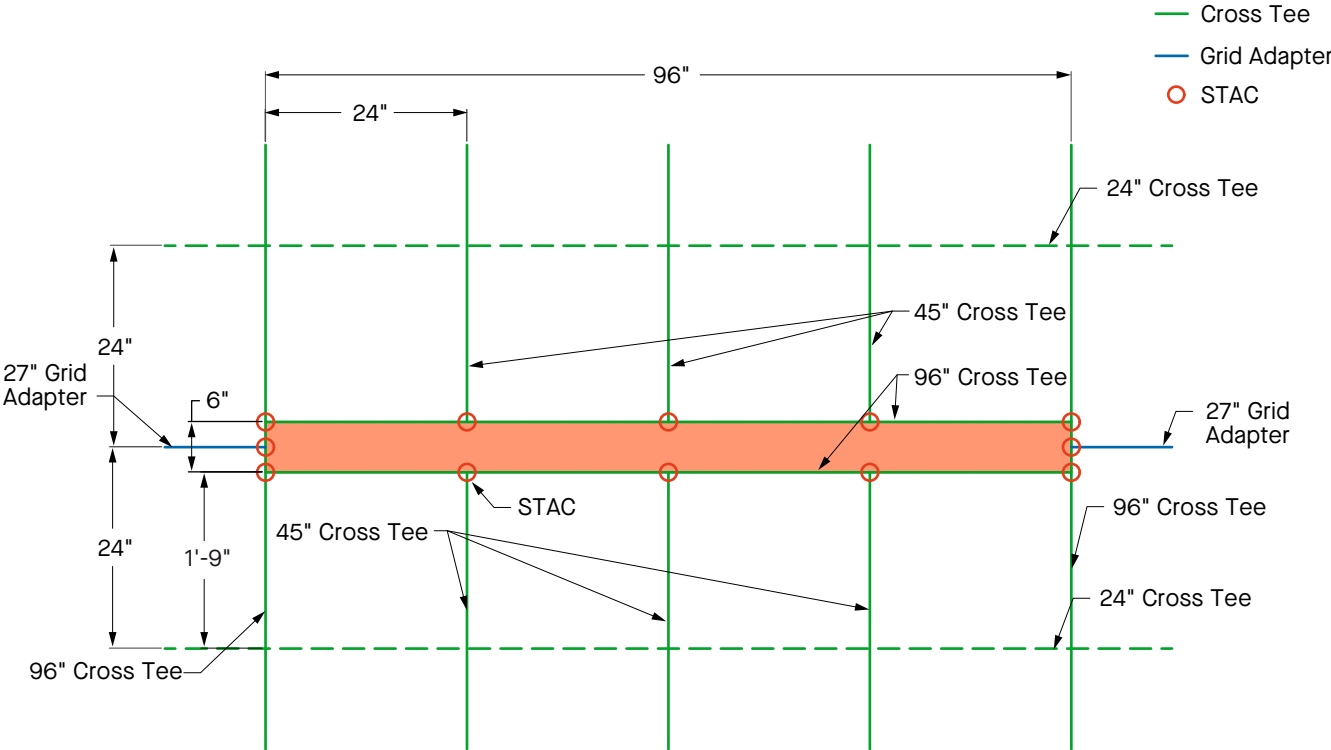
Main Beams	Prelude® *	Suprafine® *
12' HD Main Beam	7301	7501
Cross Tees		
8' Cross Tee	XL7380	XL7580
4' Cross Tee	XL7341	XL7540
2' Cross Tee	XL7328	XL7520
21" Cross Tee	FZ7361	FZ7561
Accessories		
STAC	Single Tee Adaptor Clip	

NOTE: All installation methods are shown in a 2' x 2' layout, but Sincerus can be installed in additional layouts including 2' x 4'.

\* Available in Standard White, custom colors available upon request.

Sincerus™ Linear UV Air Purification System – On-center Installation with Main Beams

On-center installation using main beams and main beam adapter



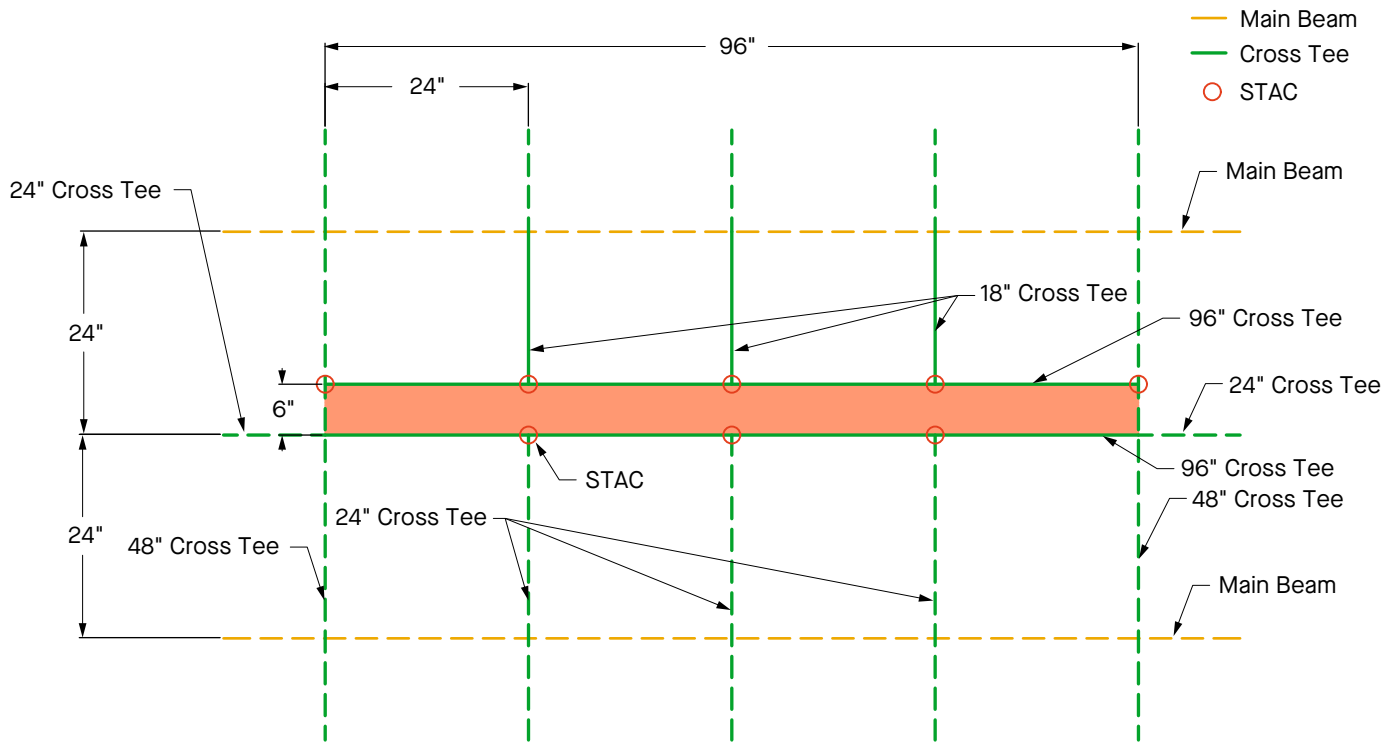
Main Beams	Prelude® *	Suprafine® *
<b>Cross Tees</b>		
8' Cross Tee	XL7380	XL7580
2' Cross Tee	XL7341	XL7540
45" Cross Tee	FZ7371	FZ7571
<b>Accessories</b>		
STAC	Single Tee Adaptor Clip	
MB Adapter	FZGA7327	FZGA7527

NOTE: All installation methods are shown in a 2' x 2' layout, but Sincerus can be installed in additional layouts including 2' x 4'.  
 \* Available in Standard White, custom colors available upon request.

# Offset Installation

## Sincerus™ Linear UV Air Purification System – Offset Installation with Main Beams

Offset installation with main beams running parallel to Sincerus™ unit – installed in cross tees



Main Beams	Prelude® *	Suprafine® *
12' HD Main Beam	7301	7501
<b>Cross Tees</b>		
8' Cross Tee	XL7380	XL7580
4' Cross Tee	XL7341	XL7540
2' Cross Tee	XL7328	XL7520
18" Cross Tee	FZ7398	FZ7598
<b>Accessories</b>		
STAC	Single Tee Adaptor Clip	

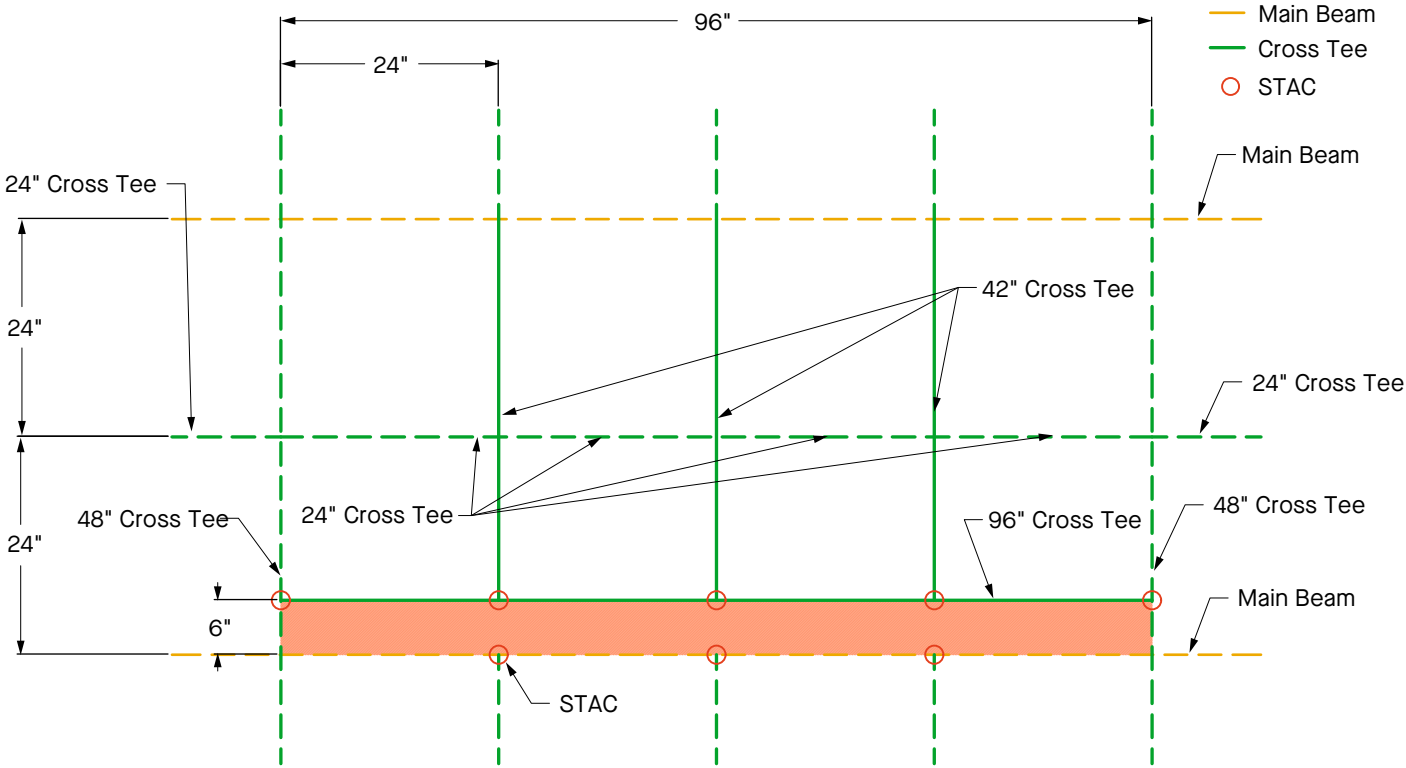
NOTE: All installation methods are shown in a 2' x 2' layout, but Sincerus can be installed in additional layouts including 2' x 4'.

\* Available in Standard White, custom colors available upon request.



Sincerus™ Linear UV Air Purification System – Offset Installation with Main Beams

Offset installation with main beams running parallel to Sincerus unit – installed in cross tees and adjacent to main beam



Main Beams	Prelude® *	Suprafine® *
12' HD Main Beam	7301	7501
<b>Cross Tees</b>		
8' Cross Tee	XL7380	XL7580
4' Cross Tee	XL7341	XL7540
2' Cross Tee	XL7328	XL7520
42" Cross Tee	FZ7362	FZ7562
<b>Accessories</b>		
STAC	Single Tee Adaptor Clip	

NOTE: All installation methods are shown in a 2' x 2' layout, but Sincerus can be installed in additional layouts including 2' x 4'.  
 \* Available in Standard White, custom colors available upon request.

Experience, Above All™

## The Next Step

**877 276-7876**

Customer Service Representatives

7:45 a.m. to 5:00 p.m. EST

Monday through Friday

TechLine – Technical information, detail drawings, CAD design assistance, installation information, other technical services – 8:00 a.m. to 5:30 p.m. EST, Monday through Friday. FAX 1 800 572 8324 or email: [techline@armstrongceilings.com](mailto:techline@armstrongceilings.com)

**[armstrongceilings.com/commercial](https://armstrongceilings.com/commercial)**

Latest product news

Standard and custom product information

Online catalog

CAD, Revit®, SketchUp® files

A Ceiling for Every Space® Visual Selection Tool

Product literature and samples – express service or regular delivery

Contacts – reps, where to buy, who will install

 **ProjectWorks®**

**[armstrongceilings.com/projectworks](https://armstrongceilings.com/projectworks)**

The power of **ProjectWorks®** Design and Pre-Construction Service

Mix and match different sizes, shapes, colors, and materials to reinvent your standard, specialty, or custom ceiling.

Visit our pattern gallery online to see ideas for your next project at [armstrongceilings.com/patterngallery](https://armstrongceilings.com/patterngallery)

Contact your local representative to get a design started! Not sure who your local rep is? Visit [armstrongceilings.com/findarep](https://armstrongceilings.com/findarep)



**Armstrong®**  
World Industries

Revit® is a registered trademark of Autodesk, Inc.; SketchUp® is a registered trademark of Trimble, Inc.  
All other trademarks used herein are the property of AWI Licensing LLC and/or its affiliates  
© 2024 AWI Licensing LLC

**TechLine / 877 276-7876**  
**[armstrongceilings.com/sincerus](https://armstrongceilings.com/sincerus)**