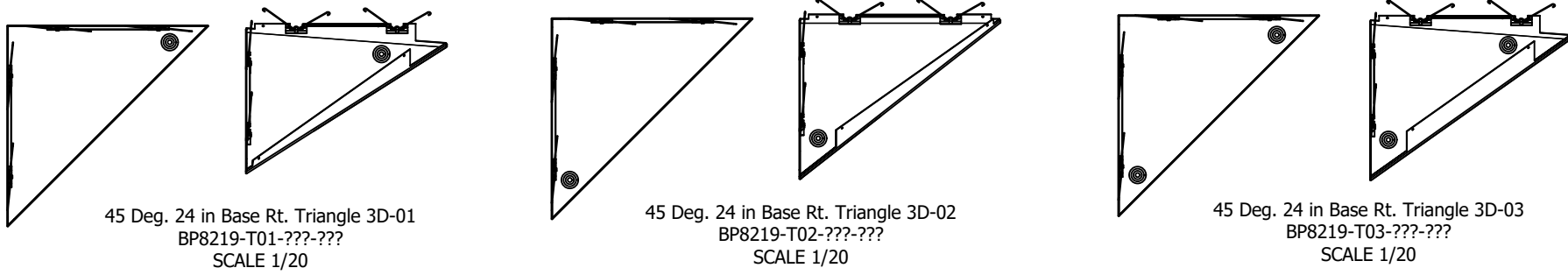


- NOTES:**
THE EXAMPLE LAYOUT AND CORRESPONDING BOM SHOWN ARE MEANT TO BE USED AS REFERENCE POINTS WHEN SPECIFYING A METALWORKS TORSION SPRING SHAPES SYSTEM.
IF YOU PLAN TO USE THE EXACT LAYOUT SHOWN, OR ANY VARIATION THEREOF, CONSIDER THE FOLLOWING NOTES:
- 1) DRAWING DETAILS SHOW A CEILING PLAN VIEW WHICH IS FROM A PLENUM POSITION LOOKING DOWN ONTO THE BACKSIDE OF THE CEILING SYSTEM. BOM LISTS DESCRIPTIONS THAT COORDINATE WITH THE DATA PAGES, AND THESE ITEM DESCRIPTIONS ARE BASED ON VIEWING THE FACE OF THE PRODUCTS.
 - 2) ALL PANELS ARE INSTALLED UNDER A 2X2 GRID MODULE LAYOUT.
 - 3) HANGER WIRE LOCATIONS SHOWN BELOW ARE ONLY SUGGESTIONS BASED ON EXAMPLE LAYOUT AND CAN BE MOVED IN ACCORDANCE WITH FOLLOWING REQUIREMENT - HANGER WIRES ARE REQUIRED ALONG MAINS WITHIN 24" OF THE WALL AND NO MORE THAN 48" O.C THEREAFTER.
 - 4) CONDITIONS SHOWN ARE FOR NON-SEISMIC INSTALLATIONS (SEISMIC DESIGN CATEGORY A,B) - REFERENCE INSTALLATION INSTRUCTIONS FOR CONSIDERATIONS AND REQUIREMENTS FOR SEISMIC INSTALLATIONS.
 - 5) DETAILS BELOW AND BOM ARE SUBJECT TO CHANGES AT THE PERIMETER BASED ON THE LAYOUT (LINEAR FEET OF PERIMETER, FULL SIZE VS. CUT PANELS, BORDER PANEL INSTALLATION METHOD).
 - 6) 7125 BOX MOLDING PERIMETER SHOWN BELOW. REFERENCE INSTALLATION INSTRUCTIONS FOR DETAILS ON ALTERNATIVE PERIMETER SOLUTIONS.
 - 7) BOM DOES NOT ACCOUNT FOR THE USE OF SCRAP OR EXCESS MATERIAL CUT FROM OTHER ITEMS.
 - 8) REFER TO MASTER PARTS SHEET, PANEL SHEET, AND INSTALLATION INSTRUCTIONS FOR SPECIFIC DETAIL VIEWS AND DIAGRAMS OF ALL PARTS AND PIECES LISTED IN BOM.
 - 9) ITEMS IN BOM WITH QUESTION MARKS (OR X'S AS SHOWN ON DATA PAGE) REFER TO OPTIONAL FINISHES OR PERFORATIONS THAT CAN BE ORDERED. REFERENCE SUFFIX CHART NEXT TO BOM FOR STANDARD FINISHES AND PERFORATIONS.

10 > ● SYMBOL = CORNER OF 4 INCH DROP ON 3D PANEL



PANEL STOCK NUMBER SUFFIX CHART

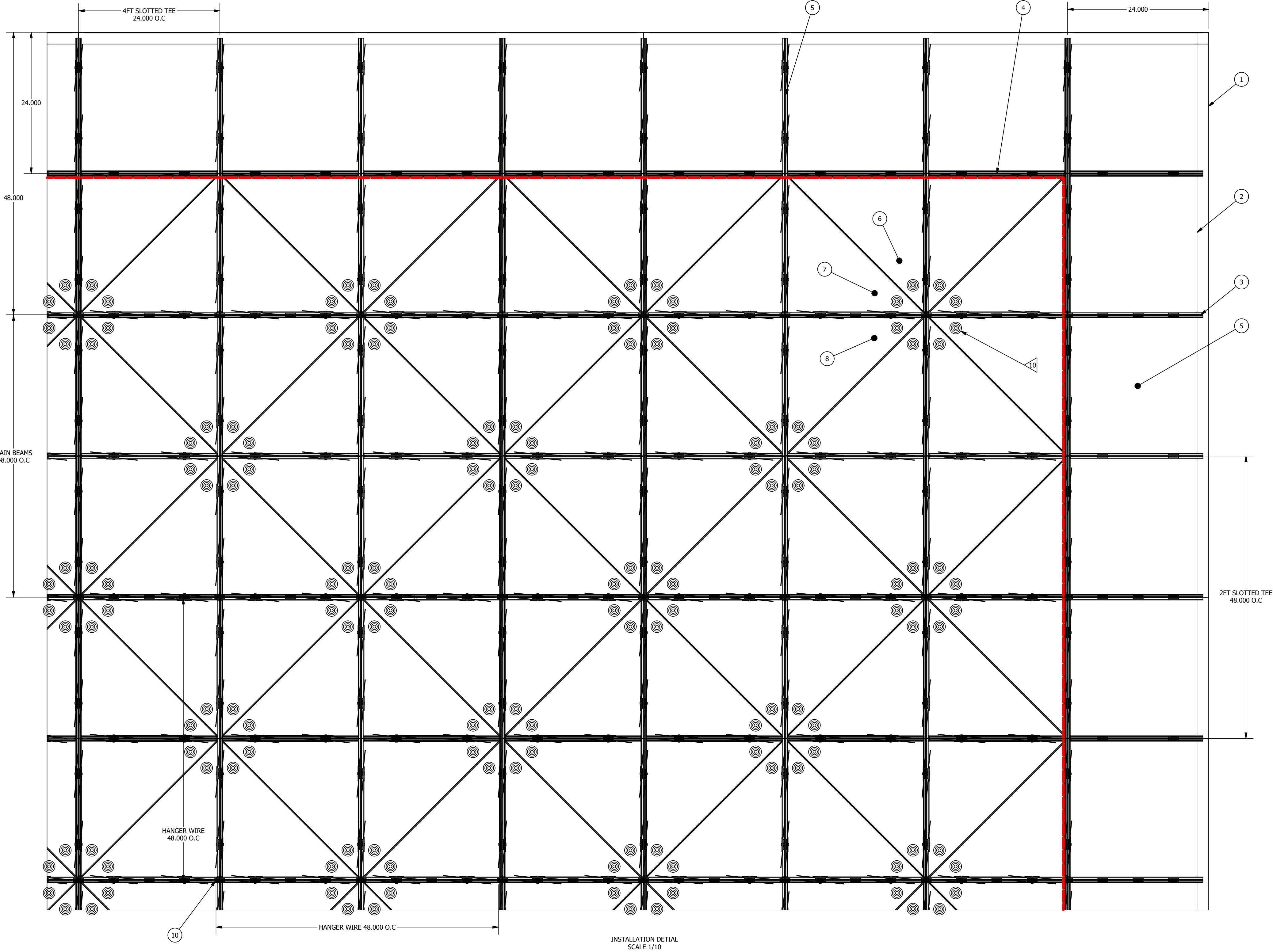
PREFINISHED ALUMINUM:
- WHA = WHITE LUME
- SJA = SILVER LUME
- MYA = GUN METAL
- BL = BLACK

PERFORATION:
- M1 = NON-PERFORATED
- M21 = .075" ROUND HOLE

SHAPE GROUP:
T## = TRIANGLE
R## = RECTANGLE
Z## = TRAPEZOID
P## = PARALLELOGRAM
H## = HEXAGON
C## = CUT OUT PANELS FOR LIGHT INTEGRATION

SHAPE SET:
- 16 = 24" SET
- 66 = 24" TECHNICAL ZONE SET AND LIGHT INTEGRATION
- 17 = 30" SET
- 67 = 30" TECHNICAL ZONE SET AND LIGHT INTEGRATION
- 19 = 3D SET

BP82??-???-???-???



TSSH-0010-4 BILL OF MATERIALS				
ITEM	QTY	STOCK NUMBER	DESCRIPTION	
1	20	7125	Box Molding	
2	80	7126	Spreader Hold Down	
3	36	7301TS	Main Beam Prelude HD Slotted	
4	200	XL8320TS	Cross Tee Prelude XL 2ft Slotted	
5	190	XL7341TS	Cross Tee Prelude XL 4ft Slotted	
6	68	BP8219-T01-M1-???	45 Deg. 24 in Base Rt. Triangle 3D-01 - M1 Perforation	
7	68	BP8219-T02-M1-???	45 Deg. 24 in Base Rt. Triangle 3D-02 - M1 Perforation	
8	512	BP8219-T03-M1-???	45 Deg. 24 in Base Rt. Triangle 3D-03 - M1 Perforation	
9	76	BP8216-R01-M1-???	24 X 24 in Square - M1 Perforation	
10	90	7891	12 Gauge Hanger Wire (Qty. = number of min. hanging point locations)	

INSTALLATION DETAIL

