

SILHOUETTE® XL® 1/4" Reveal 9/16" Slotted Tee System



SUSTAIN™
High Performance
Sustainable
Ceiling Systems



**24/7
DEFEND™**
Solutions for Healthier,
Safer Spaces

Declare. CONTAIN CLEAN PROTECT

UP TO **30%** RECYCLED CONTENT

LEED®

- energy management
- construction waste mgmt
- regional materials
- design for flexibility
- EPD
- recyclable/extended producer resp.
- biobased materials
- recycled content
- sourcing of raw materials
- material ingredient reporting
- low emitting materials
- lighting quality
- acoustics

LOCATION DEPENDENT

Calculate LEED contribution at
armstrongceilings.com/greengenie



KEY SELECTION ATTRIBUTES

- Seismic Rx® Suspension System saves time and money; offer an ICC-ES approach to installations (ESR-1308)
- Silhouette is part of the Sustain™ portfolio and meets the most stringent sustainability compliance standards today
- Hot dipped galvanized coating inhibits red rusting better than electrogalvanized or painted systems
- Some items available in metric sizes
- Rotary-stitched during manufacture for additional torsional strength and extra stability during installation; maintains size and shape of reveal when cutting perimeter cross tees
- CleanAssure™ family of products – includes disinfectable panels, suspension systems, and trim (Fog, Spray, and Wipe)
- XL² staked-on end detail provides secure locked connection
- Available with black reveal
- Made-to-Order main beams and cross tees can be ordered for your project needs in one carton minimums
- 10-Year Limited System Warranty; 30-Year Limited Ceiling Systems Warranty when used with HumiGuard® Plus products



NOTE: Additional Silhouette 1/4" reveal items for TechZone® Integrated Ceiling Systems are listed in the TechZone Technical Guide (BPCS-4486). Available online at armstrongceilings.com/techzone

Blizzard White and Charcoal Black powder-coated finish coordinates perfectly with Lyra®, Calla®, Optima®, and Ultima® ceiling panels for a clean, seamless, monolithic installed visual.

Linear lighting integration is easy with made-to-order main beam-to-cross tee adapters, rout spacing, miter spacing, and short cross tees (3" to 6" lengths).

VISUAL SELECTION

PERFORMANCE

PACKAGING

Item No.	Face Profile	Description	Rout Spacing	Notching	Dimensions (Inches)	Hanger Spacing*	
						Lbs./Lin. Ft.	Lin. Ft.
Silhouette® XL® Painted Grid to Match Axiom® Trim (360° Painted – Powder Coated Paint)						4 Ft.	5 Ft.
□ 7601_ _ ♦	9/16"	12" HD Main Beam – Notched 24" O.C.	24" O.C.		144 x 9/16 x 1-3/4"	16.35	7.80
□ 7612_ _ ♦	9/16"	12" HD Main Beam – Unnotched	–		144 x 9/16 x 1-3/4"	16.35	7.80
□ 7600_ _ ♦	9/16"	12" ID Main Beam – Notched 24" O.C.	24" O.C.		144 x 9/16 x 1-3/4"	13.10	6.61
□ 7602_ _ ♦	9/16"	10" ID Main Beam – Notched 24" O.C.	24" O.C.		120 x 9/16 x 1-3/4"	13.10	6.61
□ 7603_ _ ♦	9/16"	12" ID Main Beam – Notched 48" O.C.	48" O.C.		144 x 9/16 x 1-3/4"	13.10	6.61
□ 7606_ _ ♦	9/16"	10" ID Main Beam – Notched 30" O.C.	30" O.C.		120 x 9/16 x 1-3/4"	13.10	6.61
□ XL7680_ _ ♦	9/16"	8' Cross Tee – Unnotched	–		96 x 9/16 x 1-3/4"	12.59**	–
□ XL7690_ _ ♦	9/16"	6' Cross Tee – Unnotched	–		72 x 9/16 x 1-3/4"	12.59**	–
□ XL7650_ _ ♦	9/16"	5' Cross Tee – Unnotched	–		60 x 9/16 x 1-3/4"	–	6.09
□ XL7655_ _ ♦	9/16"	5' Cross Tee – Center-notched, both sides	–		60 x 9/16 x 1-3/4"	–	5.71
□ XL7654_ _ ♦	9/16"	5' Cross Tee – Notched, both sides at 20", 40"	–		60 x 9/16 x 1-3/4"	–	5.71
□ XL7651_ _ ♦	9/16"	5' Cross Tee – Notched, one side at 20", 40"	–		60 x 9/16 x 1-3/4"	–	5.71
□ XL7640_ _ ♦	9/16"	4' Cross Tee – Unnotched	–		48 x 9/16 x 1-3/4"	13.53	–
□ XL7645_ _ ♦	9/16"	4' Cross Tee – Center-notched, both sides	–		48 x 9/16 x 1-3/4"	12.85	–
□ XL7646_ _ ♦	9/16"	4' Cross Tee – Center-notched, one side	–		48 x 9/16 x 1-3/4"	13.21	–
□ XL7670_ _ ♦	9/16"	30" Cross Tee – Unnotched	–		30 x 9/16 x 1-3/4"	39.86 @ 2.5'	–
□ XL7620_ _ ♦	9/16"	2' Cross Tee – Unnotched	–		24 x 9/16 x 1-3/4"	69.69	71.66 @ 2'
□ XL7610_ _ ♦	9/16"	1' Cross Tee – Unnotched	–		12 x 9/16 x 1-3/4"	69.69	71.66
□ XL7606_ _ ♦	9/16"	6" Cross Tee – Unnotched	–		6 x 9/16 x 1-3/4"	–	–
□ XL7604_ _ ♦	9/16"	4" Cross Tee – Unnotched	–		4 x 9/16 x 1-3/4"	–	–

Fire Guard™	Seismic Category	Pcs./ Ctn.	Lin.Ft./ Ctn.
–	•	20	240
–	•	20	240
–	–	20	240
–	–	20	200
–	–	20	240
–	–	20	200
–	•	20	160
–	•	20	120
–	•	30	150
–	•	30	150
–	•	30	150
–	•	60	240
–	•	60	240
–	•	60	240
–	•	60	150
–	•	60	120
–	•	120	120
–	•	60	30
–	•	60	20

Dots represent high level of performance.

Varies Varies

ASTM Class
HD - Heavy-duty
ID - Intermediate-duty
LD - Light-duty

Size Capabilities	Main Beams Length	Cross Tees Length
9/16"	36" – 144" Rout spacing 3" from ends, 6" thereafter NOTE: Up to 6 Weeks for Color & Size Combinations	6" – 144"

Made-to-Order main beams and cross tees can be ordered with special sizes, rout spacing, and colors for your project needs in one carton minimums.

SILHOUETTE® XL®

1/4" Reveal

9/16" Slotted Tee System

SILHOUETTE XL – 1/4" REVEAL PAINTED GRID TO MATCH AXIOM® TRIM

VISUAL SELECTION

Item No.	Face Profile	Description	Rout Spacing	Notching (Inches)	Dimensions	Hanger Spacing*	Lbs./Lin. Ft.
360° Painted – Powder Coated Paint – (made to order)							
<input type="checkbox"/> AX76003XX	9/16"	12' HD Main Beam – Notched 24" O.C.	12" O.C.		144 x 9/16 x 1-3/4 x 1/4"	13.10	6.61
<input type="checkbox"/> AX76013XX	9/16"	12' HD Main Beam – Notched 24" O.C.	12" O.C.		144 x 9/16 x 1-3/4 x 1/4"	16.35	7.80
<input type="checkbox"/> AX76103XX	9/16"	1' Cross Tee – Unnotched	–		12 x 9/16 x 1-3/4 x 1/4"	69.69	71.66
<input type="checkbox"/> AX76203XX	9/16"	2' Cross Tee – Unnotched	–		24 x 9/16 x 1-3/4 x 1/4"	69.69	71.66 @ 2'
<input type="checkbox"/> AX76703XX	9/16"	30" Cross Tee – Unnotched	–		30 x 9/16 x 1-3/4 x 1/4"	39.86 @ 2.5'	–
<input type="checkbox"/> AX76453XX	9/16"	4' Cross Tee – Center Notched Both Sides	–		48 x 9/16 x 1-3/4 x 1/4"	12.85	–
<input type="checkbox"/> AX76503XX	9/16"	5' Cross Tee – Unnotched	–		60 x 9/16 x 1-3/4 x 1/4"	–	6.09

PERFORMANCE

Fire Guard™	Seismic Category
–	–
–	–
–	–
–	–
–	–
–	–
–	–

Dots represent high level of performance.

PACKAGING

Pcs./Ctn.	Lin.Ft./Ctn.
20	240
20	240
120	120
60	120
60	150
60	240
30	150

VISUAL SELECTION

Item No.	Description	Length	(A) Flange	(B) Flange	(C) Flange	Pcs./Ctn.	Lin. Ft./Ctn.
Suggested Wall Moldings and Shadow Moldings Additional molding options available. See armstrongceilings.com/suspensionsystems (search: accessories and moldings)							
<input type="checkbox"/> 7804_ _♦	12' Hemmed Angle Molding	144"	9/16"	7/8"	–	30	360
<input type="checkbox"/> 7873_ _♦	10' Shadow Molding	120"	9/16"	15/16"	3/8"	30	300
<input type="checkbox"/> 7878_ _♦♦♦	10' Seismic Shadow Molding	120"	15/16"	15/16"	3/8"	30	300

PERFORMANCE

Pcs./Ctn.	Lin. Ft./Ctn.
30	360
30	300
30	300

PACKAGING

Pcs./Ctn.	Lin. Ft./Ctn.
30	360
30	300
30	300

- * Simple Span
 - ** Wire at 4'
 - *** Suitable for Category D, E, F Seismic Installation with BERC2 clip
 - ♦ Items available in Standard and Blizzard White powder-coated finish
 - ♦♦ Items available in Blizzard White powder-coated finish only
- When specifying or ordering items with a color or finish, add the two-letter suffix to the end of the item number (e.g., 7301BL – Tech Black)

MAXIMUM FIXTURE WEIGHT

Configuration	Item No.	Fixture		Planning Module		Hanger Spacing		Maximum Weight		
		A	B	A	B	A	B	A	B	
Main Beam to Main Beam – Drawing Key: Main beam (↑) Cross tee (---) Hanger wire (↔)										
	7600/7602 7601	24" x 48"	24" x 48"	48" x 48"	48" x 48"	48"	48"	73.0 lbs.	73.0 lbs.	
		24" x 48"	24" x 48"	48" x 48"	48" x 48"	48"	48"	76.0 lbs.	76.0 lbs.	
		24" x 48"	24" x 48"	48" x 48"	48" x 48"	48"	48"	75.0 lbs.	75.0 lbs.	
		24" x 48"	24" x 48"	48" x 48"	48" x 48"	48"	48"	75.0 lbs.	75.0 lbs.	

Main beams tested as follows: 7600 tested at 13.1 lbs/LF to 1/360 of 4' span; 7601 tested at 16.35 lbs/LF to 1/360 of 4' span.

Cross Tee to Cross Tee – Drawing Key: Main beam (↑) Cross tee (---) Hanger wire (↔)

Configuration	Item No.	Fixture A	Fixture B	Planning Module A	Planning Module B	Hanger Spacing A	Hanger Spacing B	Maximum Weight A	Maximum Weight B
	XL7645 XL7646	24" x 48"	24" x 48"	48" x 48"	48" x 48"	48"	48"	59.0 lbs.	41.0 lbs.
		24" x 48"	24" x 48"	48" x 48"	48" x 48"	48"	48"	59.0 lbs.	41.0 lbs.

Cross tees tested as follows: XL7645 tested at 12.0 lbs/LF to 1/360 of 4' span.

Fixtures weighing more than 56 lbs. should be independently supported. Fixture weight is based on single fixture only. For end-to-end fixtures or other configurations not shown, consult your Armstrong Ceilings representative.
NOTE: The above data is based on 48" hanger wire spacing, board weight of 1 lb./SF, maximum deflection of cross tees not to exceed 1/360 of the span, and suspension system installed in accordance with ASTM C636.

SILHOUETTE® XL®

1/4" Reveal

9/16" Slotted Tee System

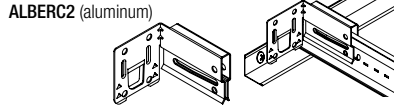
COLOR AND FINISH SELECTION



- ◆ Available with Black reveal, add suffix Bl, (e.g., 7600BL)
- ◆ Items available in powder-coated finish

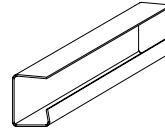
ACCESSORIES

BERC2 – 2" Beam End Retaining Clip – Allows you to create a code compliant Seismic D, E, F ceiling installation while eliminating the need to use 2" wall molding or spreader bars.



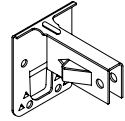
- BERC2 (Steel) – 200 pcs
- FZBERC2 (Steel) – 50 pcs
- ALBERC2 (Aluminum) – 200 pcs
- FZALBERC2 (Aluminum) – 50 pcs

MCC4G – Silhouette 1/4" Reveal Miter Closure Clip – Eliminates main beam and cross tee miters.



- MCC4G – 200 pcs
- FZMCC4G – 50 pcs

GCWA – Grip Clip Wall Attachment – Joins main beam or cross tee to wall molding via locking bars without pop rivets or screws.



- GCWA – 250 pcs
- FZGCWA – 50 pcs

DETAILS For more information, see submittal BPCS-3157.

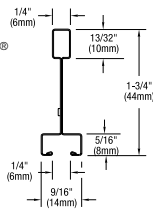


SILHOUETTE XL Main Beam

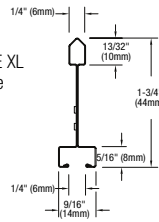


SILHOUETTE XL Cross Tee

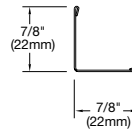
SILHOUETTE® XL® Main Beam with 1/4" Reveal



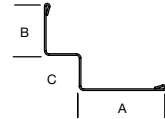
SILHOUETTE XL Cross Tee



7/8" Hemmed Angle Molding



Shadow Molding



SEISMIC PERFORMANCE

Main Beams
7600/804042, 7606, 7602, 7601, 7603

Minimum Lbs. To Pull Out Compression/Tension
340.0, 392.9, 340.0

Cross Tees
XL7610, XL7620/802042, XL7640, XL7645/803042, XL7646, XL7650, XL7670, XL7655, XL7680, XL7690

Minimum Lbs. To Pull Out Compression/Tension
299.5

ICC Reports

For areas under ICC jurisdiction, see ICC evaluation report number ESR-1308 for allowable values and/or conditions of use concerning the suspension system components listed on this page. The report is subject to reexamination, revisions and possible cancellation.

To derive maximum lbs/sf, divide the O.C. spacing of the component into the lbs/lf given in the load test data table.

PHYSICAL DATA

Material

Double-web hot dipped galvanized steel

Surface Finish

Baked polyester paint or powder-coated finish

Manufactured and tested in accordance with ASTM C635

Face Dimension

9/16"

Profile

Bolt-slot

Cross Tee/Main Beam Interface

Mitered

End Detail

Main Beam: Coupling

Cross Tee: Staked-on clip

Cleaning & Disinfecting

Cleaning and CDC approved disinfecting options available on armstrongceilings.com/cleaning