

# AXIOM® Glazing Channel

Trim for Glass Partitions  
straight



Calculate sustainability with GreenGenie™  
armstrongceilings.com/greengenie



Axiom® extruded aluminum Glazing Channel trim for 3/8" and 1/2" glass partition walls offers fully concealed integration with all Armstrong® acoustical and drywall ceiling systems for a clean installed visual so glass can disappear into the plenum.\*\*

## KEY SELECTION ATTRIBUTES

- Five trim profile options to coordinate with lay-in, Tegular and Vector® ceiling panels and drywall grid system
- Axiom® trim is part of the Sustain™ portfolio and meets the most stringent sustainability compliance standards today
- CleanAssure™ family of products – includes disinfectable panels, suspension systems, and trim (Cleaning and CDC approved disinfecting options available on armstrongceilings.com/cleaning)
- Coordinated fit and finish ensures delivery of design intent
- Seismic solution for category D, E, F installations

- Coordinates with Armstrong® ceiling and suspension systems; custom colors available
- 10-Year Limited Warranty, 30-Year System Warranty

## COLORS

Standard



White (WH)



Custom Colors Available\*

\* Colors that are pre-qualified to meet Sustain™ portfolio requirements are available upon request. Other made-to-order colors must be evaluated if sustainability criteria is required. Lead time will increase.

## VISUAL SELECTION

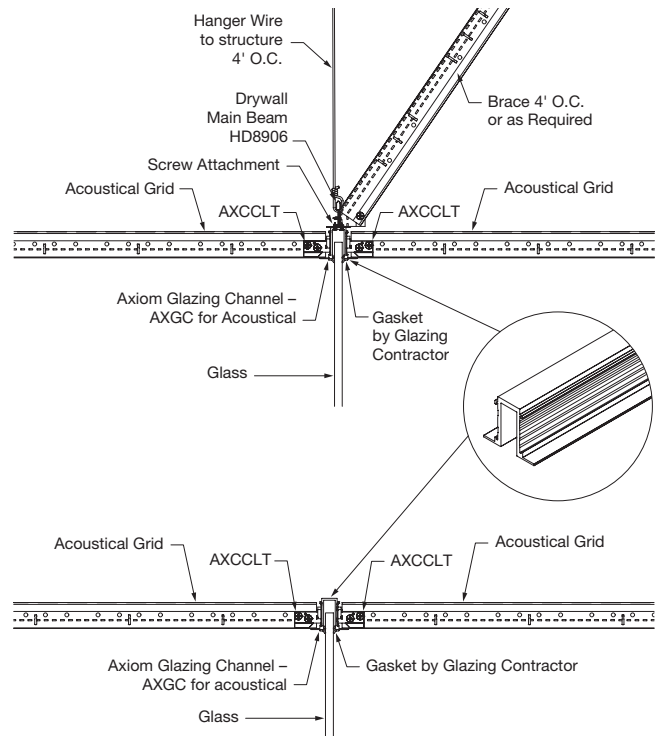
Item No.	Description	Dimensions (Inches)
AXIOM® Glazing Channel Trim	AXGC Acoustical-to-Acoustical	120 x 2-7/16 x 2"
	AXGCS Seismic Acoustical-to-Acoustical	120 x 3-1/4 x 2"
	AXGCV Vector Acoustical-to-Acoustical	120 x 2-3/8 x 2-1/2"
	AXGCAD Acoustical-to-Drywall	120 x 2-1/2 x 2"
	AXGCD Drywall-to-Drywall	120 x 2-1/2 x 2"

NOTE: Bottom and side U-Channels for glass installation provided by glazing contractor  
Interior Glass Partition installation is also addressed at armstrongceilings.com/commonconditions

\*\* Interior Glass Partition installation is also addressed at armstrongceilings.com/commonconditions

## DETAILS

CAD drawings available at armstrongceilings.com/axiom



## ACCESSORIES

Item No.	Description	Dimensions (Inches)
AXSPLICE2	Splice Plate with Setscrews	N/A
AXCCLT	T-Bar Connector Twist Clip	N/A
7239	Adjustable Trim Clip***	N/A

\*\*\* For use with specialty ceilings with grid offset greater than 3/8"; installs with Drywall Grid System. Contact TechLine for details.