

AXIOM® Indirect Field Light Covers

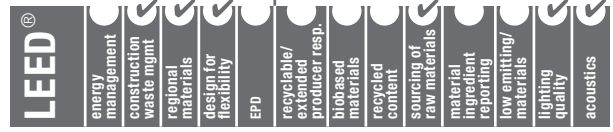


DeclareSM
Living Building
Challenge Compliant

SUSTAINSM
High Performance
Sustainable
Ceiling Systems

50% RECYCLED CONTENT

Calculate LEED contribution at
armstrongceilings.com/greengenie



LOCATION DEPENDENT



Axiom Indirect Field Light Covers

KEY SELECTION ATTRIBUTES

- Axiom® Indirect Field Light Covers offer predictable lighting performance and perfect integration with all Armstrong suspension systems
- Axiom Indirect Light Covers are part of the Sustain™ portfolio and meet the most stringent sustainability compliance standards today
- With our lighting partners, this pre-engineered solution offers a variety of options with both Ceiling-to-Wall and Ceiling-to-Ceiling light covers and sizes
- Adjustability of the drywall vertical leg allows for field modification
- Designed with a notched channel for perfect integration with Axis Lighting and Vode Lighting. Delivering aim free predictable lighting solutions.
- Pre-fabricated corners
- Ability to cut to the length desired in the field
- 10-Year Limited Warranty, 30-Year System Warranty

TYPICAL APPLICATIONS

- Offices
- Corridors
- Restrooms
- Healthcare
- Lobbies
- Boardrooms
- Retail
- Retrofits

LIGHTING FIXTURES

Compatible with:
Axis Lighting and Vode® Lighting.



VISUAL SELECTION

Specify Field Light Cove Item Number

Example: AXIFLCKCE – Axiom® Indirect Field Light Cove, Ceiling-to-Ceiling Mounting with a Knife Edge® Detail for ACT

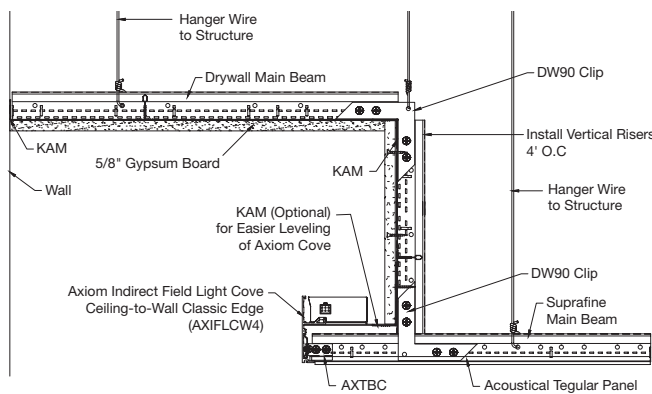
STRAIGHT

Light Cove Type ♦	Mounting	Edge Detail
<input type="checkbox"/> AXIFL __	--	--
	CC – Ceiling-to-Ceiling CW – Ceiling-to-Wall	4 – 4" Classic KE – Knife Edge ACT KD – Knife Edge Drywall KEVE – Knife Edge Vector 4VE – 4" Vector

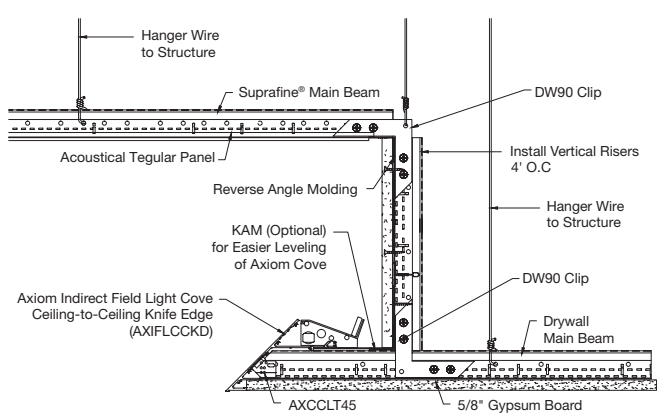
♦ Light Covers are 10' in length

MOUNTING

Ceiling-to-Wall Classic

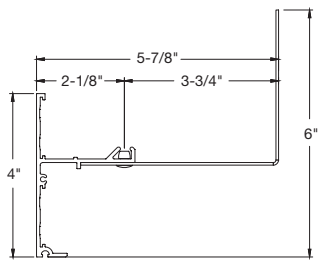


Ceiling-to-Ceiling Knife Edge®

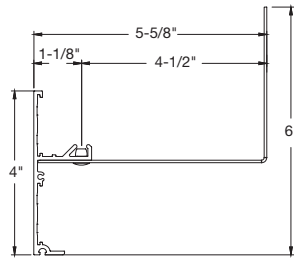


AXIOM® Indirect Field Light Covers

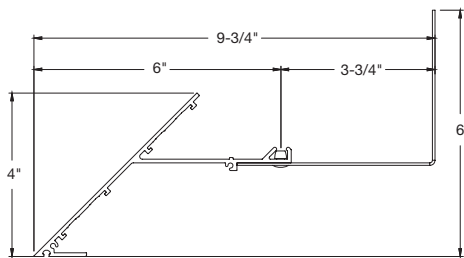
EDGE DETAILS



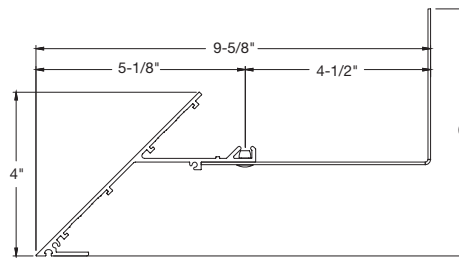
Ceiling-to-Ceiling Classic



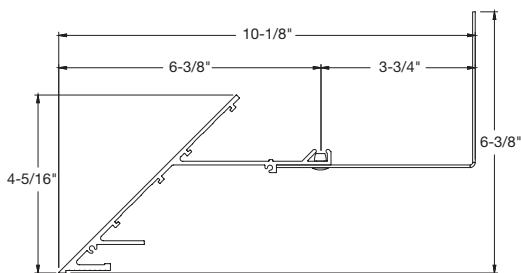
Ceiling-to-Wall Classic



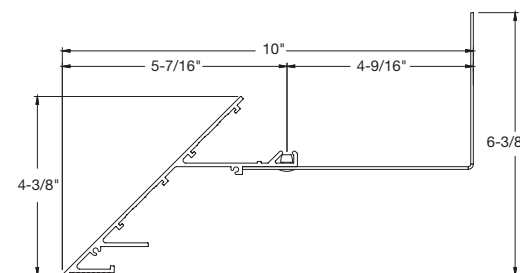
Ceiling-to-Ceiling Knife Edge®



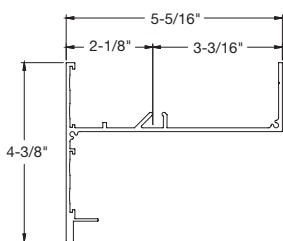
Ceiling-to-Wall Knife Edge®



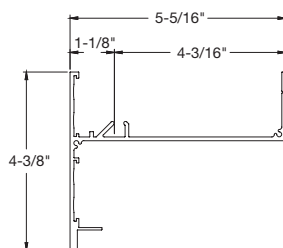
Ceiling-to-Ceiling Drywall Knife Edge®



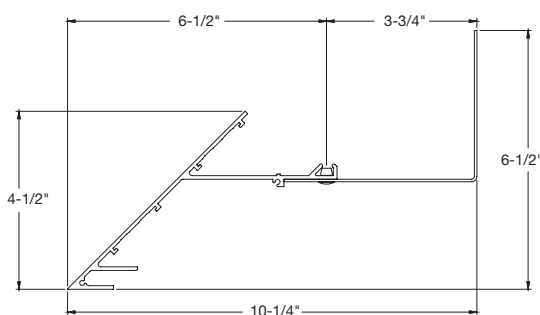
Ceiling-to-Wall Drywall Knife Edge®



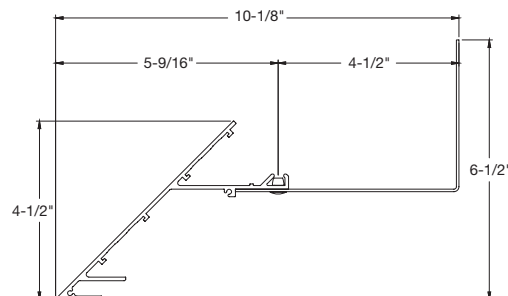
4" Classic – Ceiling-to-Ceiling for Vector® Panel Installations



4" Classic – Ceiling-to-Wall for Vector® Panel Installations



Knife Edge® – Ceiling-to-Ceiling



Knife Edge® – Ceiling-to-Wall

AXIOM® Indirect Field Light Covers

VISUAL SELECTION

Specify Field Light Cove Corner Item Number (NOTE – only use this section if you need corners on your project)

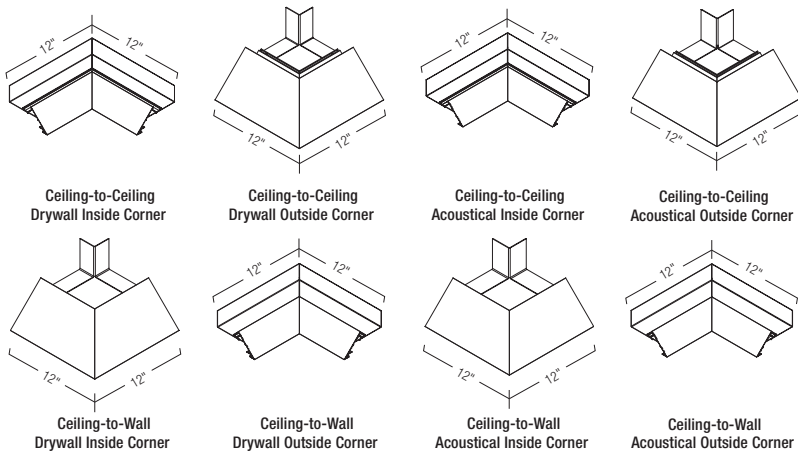
Example: AXIFLCWKDOC – Axiom® Indirect Field Light Cove, Ceiling-to-Wall Mounting with a Knife Edge for Drywall Edge Detail, Outside Corner

CORNERS

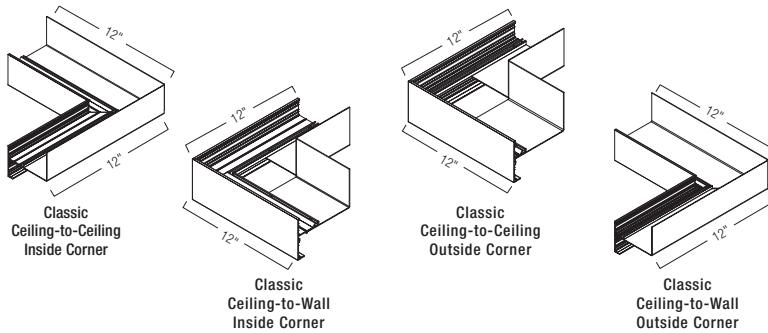
Light Cove Type ♦♦	Mounting	Edge Detail	Options
<input type="checkbox"/> AXIFL __	-- CC – Ceiling-to-Ceiling CW – Ceiling-to-Wall	-- 4 – 4" Classic KE – Knife Edge ACT KD – Knife Edge Drywall KEVE – Knife Edge Vector 4VE – 4" Vector	-- IC – Inside Corner OC – Outside Corner

♦♦ Light Cove Corners are 12" in length and 12" in width

CORNERS for Knife Edge® Profiles



CORNERS for Classic Profiles



COLOR – Standard



VISUAL SELECTION

Specify Field Light Cove Curved Item Number (NOTE – only use this section if you need curves on your project)

Example: AXIFL4CUR – Axiom® Indirect Field Light Cove, 4" Classic Light Cove Curved

CURVED

Light Cove Type ♦♦	Edge Detail	Options
<input type="checkbox"/> AXIFL __	-- 4 – 4" Classic	-- CUR – Curved

MINIMUM BEND RADIUS FOR INDIRECT FIELD LIGHT COVES

Inside: 60" Minimum
Outside: 60" Minimum

ACCESSORIES

Item No.	Description
<input type="checkbox"/> AXCCLT45	45 Degree T-Bar Connector Twist For use with Knife Edge Coves
<input type="checkbox"/> AXBTSTR	Axiom Bottom Drywall Trim For use with 4" Classic Edge Coves only
<input type="checkbox"/> AXTBC	T-Bar Connector Clip For use with 4" Classic Edge Coves only
<input type="checkbox"/> AX4SPLICE	Axiom Splice Plate
<input type="checkbox"/> 151220E	12' Knurled Angle Molding
<input type="checkbox"/> DW90C	90° Drywall Angle Clip
<input type="checkbox"/> 7857	Reverse Angle Molding

AXIOM® Indirect Field Light Covers

COMPATIBLE LIGHT FIXTURES

CovePerfekt™ by Axis Lighting

For more information: www.axislighting.com



Outstanding Aesthetics

- No shadows. No bright spots. No color shifting.

Easy Specification

- Aim-free luminaire. No need for complex details. Less trade coordination.



Unparalleled Performance

- Twice the efficiency of other LED cove products.
- Wide distribution using SurroundLite™ technology.

Worry-free Installation & Maintenance

- Foolproof keyed mounting. Up to 90% less labor.



COMPATIBLE LIGHT FIXTURES Continued

ZipWave™ | LED | 707 by Vode® Lighting

Perfect color, perfect beam, perfect alignment... every time

For more information: www.vode.com/zipwave-led-707



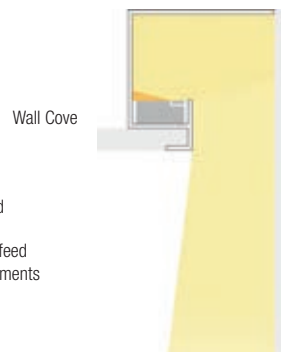
Exceptional Performance

- Low, standard and high outputs available
- High output over 1200 lm/ft.
- Customizable output and wattage options



Foolproof Installation

- Drop-in, tool-free installation with plug and play connections
- Runs 100' or more from one 120v power feed
- Section lengths in exact 1' (305mm) increments



PHYSICAL DATA

Material

Commercial quality 3003 aluminum alloy

Surface Finish

Factory-applied baked polyester paint finish

Warranty

10-Year Limited Warranty; 30-Year System Warranty

Profile

Various options with both Ceiling-to-Wall and Ceiling-to-Ceiling Light Covers in a wide range of sizes with 3/4" horizontal flange.

Cross Tee/Main Beam Interface

Flush fit

End Detail

Splice with screws



TechLine / 1 877 276-7876
armstrongceilings.com/lightcovers
(search: lightcovers)
BPCS-5656-620

CovePerfekt™ is a trademark of Axis Lighting; Vode® and ZipWave™ are trademarks of Vode Lighting LLC; LEED® is a registered trademark of the U.S. Green Building Council; All other trademarks used herein are the property of AWI Licensing LLC and/or its affiliates © 2020 AWI Licensing LLC Printed in the United States of America

