

# Continuous Load Path (CLP) For PRELUDE® XL®

Declare<sup>SM</sup>  
Living Building  
Challenge Complaint

SUSTAIN™  
High Performance  
Sustainable  
Ceiling Systems



UP TO 30% RECYCLED CONTENT

LEED®

- energy management
- construction waste mgmt
- regional materials
- design for flexibility
- EPD
- recyclable/extended producer resp.
- biobased materials
- recycled content
- sourcing of raw materials
- material innovation
- reporting
- low emitting materials
- lighting quality
- acoustics

Calculate LEED contribution at [armstrongceilings.com/greengenie](http://armstrongceilings.com/greengenie)

LOCATION DEPENDENT



## KEY SELECTION ATTRIBUTES

- Seamlessly integrates with Prelude® XL®
- Allows a threaded rod to connect to the deck without interrupting the ceiling plane
- Designed to accommodate 1/2" and 3/8" threaded rods
- Point loads of up to 1,800 lbs per 3/8" rod and up to 3,300 lbs per 1/2" rod with no weight transferred to the ceiling system
- Helps to manage air flow without unwarranted air penetrations in the ceiling grid or panels
- CLP7301 stabs into the CLP main beams for easy connection
- Combines the ceiling system with a structural component for hanging cable trays, heavy lighting, or signage

- Utilizes standard Armstrong ceiling panels that do not need to be cut or notched around CLP
- Compatible with DynaMax™ Structural Aluminum Data Center Suspension System
- Reduce the number of hanger wires

## TYPICAL APPLICATIONS

- Data Centers
- Signage
- Lighting
- Anywhere conditions require added strength

## VISUAL SELECTION

Item No.	Face Profile	Description	Rout Spacing	Dimensions (Inches)	Load Test Data (Lbs./Lin. Ft.)		Fire Guard™	Seismic Category	PACKAGING	
					L/360	Lbs./Lin. Ft.			Pcs./Ctn.	Lin. Ft./Ctn.
<b>Continuous Load Path (CLP)</b>					<b>4 Ft.</b>	<b>5 Ft.</b>				
<input type="checkbox"/> CLP7301	15/16"		—	6 x 15/16"			—	•	20	10
<input type="checkbox"/> 7396	15/16"	9' 6" Main Beam	6" O.C.	114 x 15/16"	16.5	8.73	—	•	20	190
<input type="checkbox"/> 7376	15/16"	7' 6" Main Beam	6" O.C.	90 x 15/16"	16.5	8.73	—	•	20	150
<b>Prelude® XL®</b>										
<input type="checkbox"/> 7301 ♦	15/16"	12' HD Main Beam	6" O.C.	144 x 15/16 x 1-11/16"	16.73	8.73	—	•	20	240
<input type="checkbox"/> 7301HRC	15/16"	12' HD Main Beam	6" O.C.	144 x 15/16 x 1-11/16"	16.73	8.73	—	•	20	240
<input type="checkbox"/> XL7348 _ ♦	15/16"	4' Cross Tee	12"	48 x 15/16 x 1-3/8"	6.78	—	—	•	60	240
<input type="checkbox"/> XL7328 _ ♦	15/16"	2' Cross Tee	—	24 x 15/16 x 1-3/8"	36.0 @ 2'	—	—	•	60	120

♦ Items available in Standard, Premium, and Blizzard White powder-coated finish  
 ♦ Items available in White and Blizzard White powder-coated finish  
 When specifying or ordering items with a color or finish, add the two-letter suffix to the end of the item number (e.g., 7301HA – Haze)

## VISUAL SELECTION

Item No.	Description	Length	(A) Flange	(B) Height	(C) Reveal	(D) Reveal	PACKAGING	
							Pcs./Ctn.	Lin. Ft./Ctn.
<b>Suggested Wall Moldings and Shadow Moldings</b>								
<input type="checkbox"/> 7800 _ ♦	12' Hemmed Angle Molding	144"	7/8"	7/8"	—		30	360
<input type="checkbox"/> 7800HRC								

♦ Items available in Standard, Premium, and Blizzard White powder-coated finish  
 When specifying or ordering items with a color or finish, add the two-letter suffix to the end of the item number (e.g., 7301HA – Haze)

## COLOR AND FINISH SELECTION

**Standard**

White (WH)

White with TrioGuard® (WH3G)

Ivory (IV)

Medium Taupe (MT)

Light Grey (LG)

Grey Stone (GS)

Tech Black (BL)

Silver Grey (SG)

Gun Metal Grey (MY)

Silver Satin (SA)

**Premium**

Camel (CM)

White Aluminum (WA) ††

Natural Aluminum (NA) ††

Copper (CP)

Bronze (BZ)

Pewter (PW)

Silver (SL)

**Powder-coated Finish\***

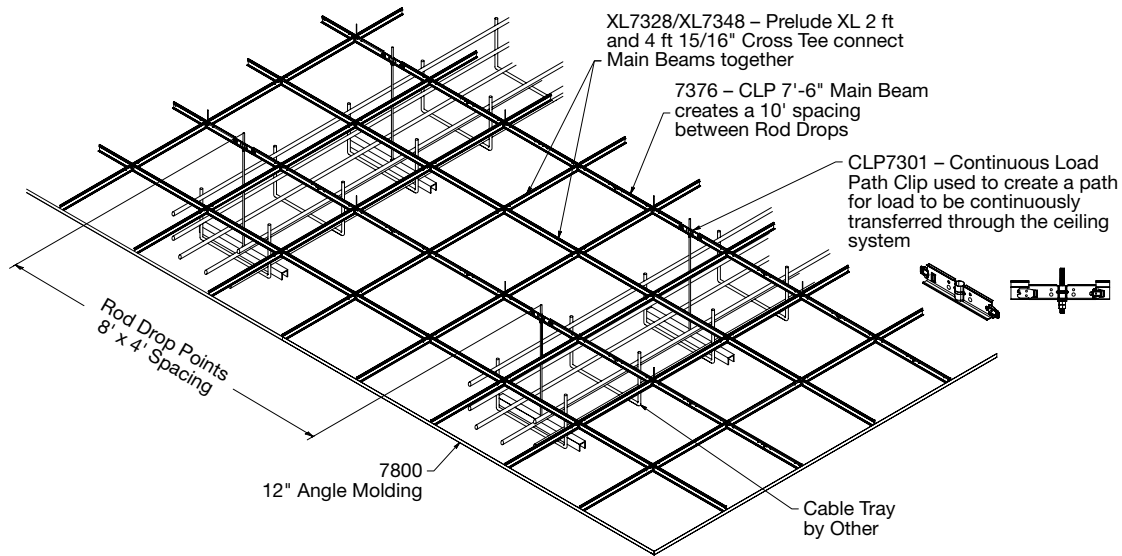
Blizzard White (ZW)

Available in any color!

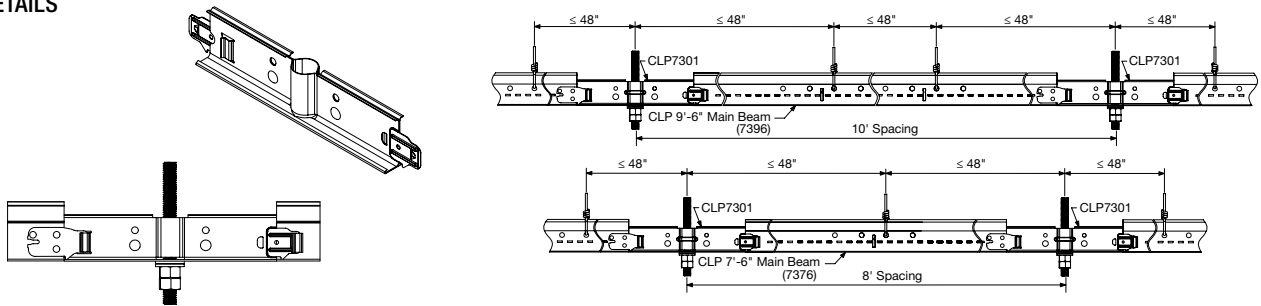
†† Capping only  
 ††† Peel-off protective film on exposed surfaces to protect from scuffing or marking during installation  
 ♦ Items available in powder-coated finish  
 When specifying or ordering items with a color or finish, add the two-letter suffix to the end of the item number (e.g., 7301HA – Haze)

# Continuous Load Path (CLP) For PRELUDE® XL®

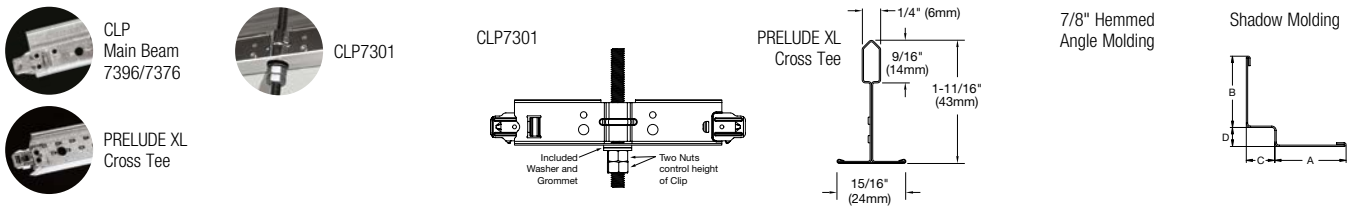
## INSTALLATION OVERVIEW



## DETAILS



## CLP MAINBEAMS FOR PRELUDE® XL®



## SEISMIC PERFORMANCE

**Main Beams**  
7396, 7376

**Minimum Lbs. To Pull Out Compression/Tension**  
335.0  
330.0

### Cross Tees

All XL® cross tees exceed 300 lbs. in both compression and tension.

### ICC Reports

For areas under ICC jurisdiction, see ICC evaluation report number ESR-1308 for allowable values and/or conditions of use concerning the suspension system components listed on this page. The report is subject to reexamination, revisions, and possible cancellation.

## PHYSICAL DATA

**Material**  
Hot dipped galvanized steel

**Surface Finish**  
Baked polyester paint or powder coated  
Manufactured and tested in accordance with ASTM C635

**Face Dimension**  
15/16"

**Profile**  
Exposed tee

**Cross Tee/Main Beam Interface**  
Override

**End Detail**  
Main Beam: Staked-on clip  
Cross Tee: Staked-on clip

**Duty Classification**  
Intermediate or Heavy-duty