

PRELUDE® XL® Max™ Suspension System

Removal and Re-installation Instructions

REMOVAL

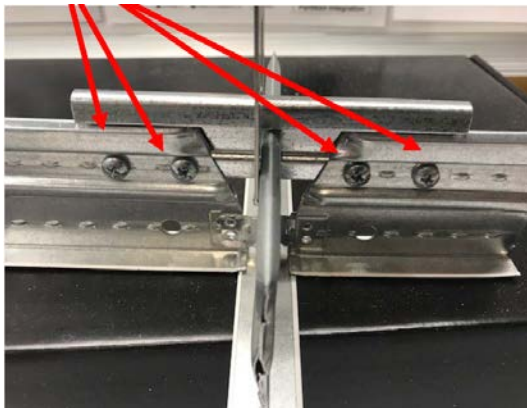
Step 1

Identify the area where the cross tee needs to be removed.



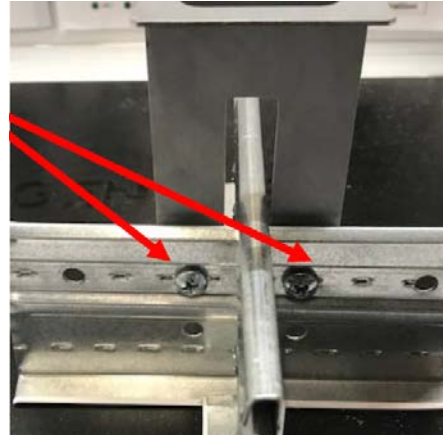
Step 2

Remove the 4-screws from the IJC on the 4' and 2' tees in the area that needs to be removed.



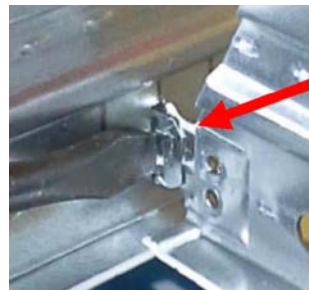
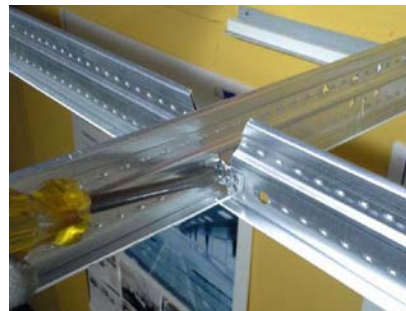
Step 3

Remove the screws connecting the PMHC to the main beam. This will allow the main to roll, as described in Step 6.



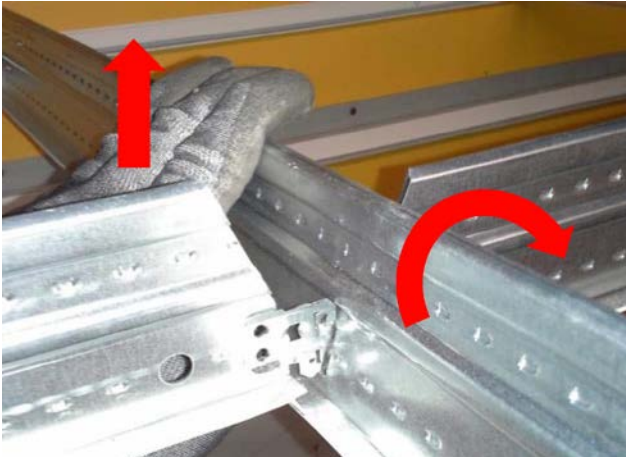
Step 4

Compress the tab on the cross tee that you want to remove.



Step 5

Roll the main beam away from the 4' tee that you are looking to remove.



NOTE: Adjacent IJC clips may need to be removed from the main beam below to allow it to roll.

The cross tee will now be free from the grid system.

RE-INSTALLATION

Step 1

On the grid being installed, make sure the XL® clip on the end of the grip is undamaged and straight with no previous indication that it was bent. This is important for the integrity of the grid strength. **NOTE:** Tee replacement may be needed; have extras on hand.



This is bad and should be replaced



This is a good XL clip

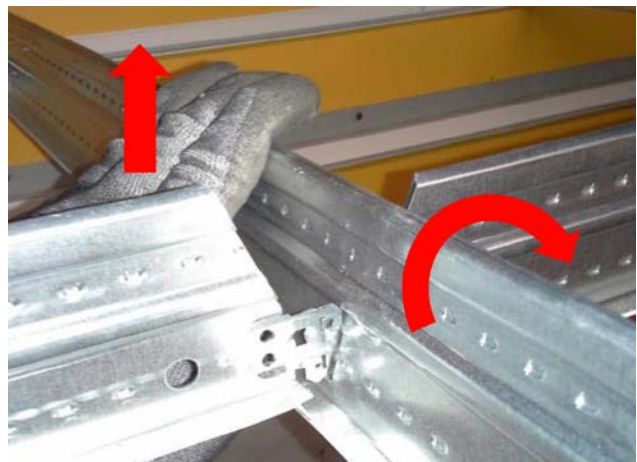
Step 2

Insert the tee as you would normally; installing from above, and inserting one end first, as shown.



Step 3

On the other end of the tee, roll the main beam so that the 4' cross tee can be installed into the rout hole.



Step 4

Reinstall the screws using threadlocker from the PMHC into the main beam using a low torque setting on the drill motor ensuring that the screws/clips are not stripped during the re-installation process. Any stripped out screws and tee clips must be replaced.

Step 5

Reinstall the IJC clips and install the existing screws. Again, use a low torque setting ensuring that the screws/clips are not stripped during the re-installation process.

MORE INFORMATION

For more information, or for an Armstrong Ceilings representative, call 1 877 276 7876.
For complete technical information, detail drawings, CAD design assistance, installation information, and many other technical services, call TechLine customer support at 1 877 276 7876 or FAX 1 800 572 TECH.
For the latest product selection and specification data, visit armstrongceilings.com/datacenters.

Inspiring Great Spaces® is a registered trademark of AFI Licensing LLC
All other trademarks used herein are the property of AWI Licensing LLC and/or its affiliates
© 2020 AWI Licensing LLC • Printed in the United States of America
BPLA-298988-520

