

# DRYWALL GRID SYSTEMS

## 6' DGS Cross Tee

Declare<sup>SM</sup>  
Living Building  
Challenge Complaint

SUSTAIN<sup>™</sup>  
High Performance  
Sustainable  
Ceiling Systems



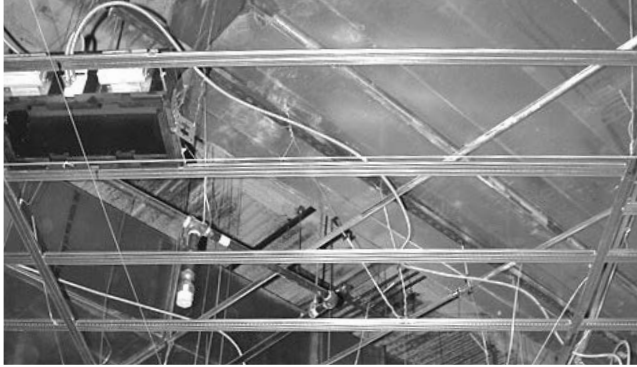
UP TO 30% RECYCLED CONTENT

LEED<sup>®</sup>

- energy management
- construction waste mgmt
- regional materials
- design for flexibility
- EPD
- recyclable/extended producer resp.
- biobased materials
- recycled content
- sourcing of raw materials
- material ingredient reporting
- low emitting materials
- lighting quality
- acoustics

Calculate LEED contribution at [armstrongceilings.com/greengenie](http://armstrongceilings.com/greengenie)

LOCATION DEPENDENT

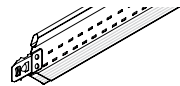
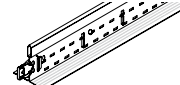
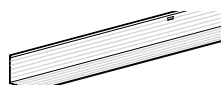

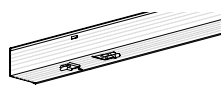


### KEY SELECTION ATTRIBUTES

**6' DGS Cross Tee: Speeds installation and reduces material costs.**

- 6' spacing on main beams results in cost savings of 10-15% by reducing material, hanger wire, and time to install
- Supports up to 2 layers of gypsum board (see load chart for tee and wire spacing)
- Extra rout holes to accommodate F-Type light fixtures
- Rotary stitching on double web adds strength and stability
- Deep knurled surface for easy screw insertion
- G40, .018" metal thickness meets ASTM C645
- UL<sup>®</sup> fire rated

### VISUAL SELECTION

Item No. ♦	Length/Item Description	Face Dimensions	Profile Height	Simple Span Uniform Load at L/240 (lbs./LF)	
<input type="checkbox"/> XL8965	6' Drywall Grid Cross Tee	1-1/2"	1-1/2"	6 ft. Span – 6.4	
<input type="checkbox"/> HD8906	12' Tee (Knockouts 8" O.C.)	1-1/2"	1-1/2"	2" Span – 143 3" Span – 57.3 4" Span – 28.14	
<input type="checkbox"/> KAM10	10' Knurled Angle Molding	1-1/4" x 1-1/4"	1-1/4" x 1-1/4"	N/A	
<input type="checkbox"/> KAM12	12' Knurled Angle Molding	1-1/4" x 1-1/4"	1-1/4" x 1-1/4"	N/A	
<input type="checkbox"/> KAM12HRC	12' Knurled Angle Molding	1-1/4" x 1-1/4"	1-1/4" x 1-1/4"	N/A	
<input type="checkbox"/> KAM1510	10' Knurled Angle Molding	1-1/2" x 1-1/2"	1-1/2" x 1-1/2"	N/A	
<input type="checkbox"/> KAM1512	12' Knurled Angle Molding	1-1/2" x 1-1/2"	1-1/2" x 1-1/2"	N/A	
<input type="checkbox"/> KAM21020	10' Knurled Angle Molding	2" x 2"	2" x 2"	N/A	
<input type="checkbox"/> KAM21025	12' Knurled Angle Molding	2" x 2"	2" x 2"	N/A	
<input type="checkbox"/> SC151220EQ	12' x 1-1/2" SimpleCurve Knurled Angle Molding	1-1/2"	1-1/2"	N/A	
<input type="checkbox"/> SC151225	12' x 1-1/2" SimpleCurve Knurled Angle Molding	1-1/2"	1-1/2"	N/A	
<input type="checkbox"/> SC21220EQ	12' x 2" SimpleCurve Knurled Angle Molding	2"	2"	N/A	
<input type="checkbox"/> SC21225	12' x 2" SimpleCurve Knurled Angle Molding	2"	2"	N/A	
<input type="checkbox"/> LAM12	12" Locking Angle Molding (Locking tabs 8" O.C.)	1-1/4" x 1-1/4"	1-1/4"	N/A	
<input type="checkbox"/> LAM12HRC		1-1/4" x 1-1/4"	1-1/4"	N/A	
<input type="checkbox"/> LAM151220		1-1/2" x 1-1/2"	1-1/2"	N/A	

### Membrane Load Values

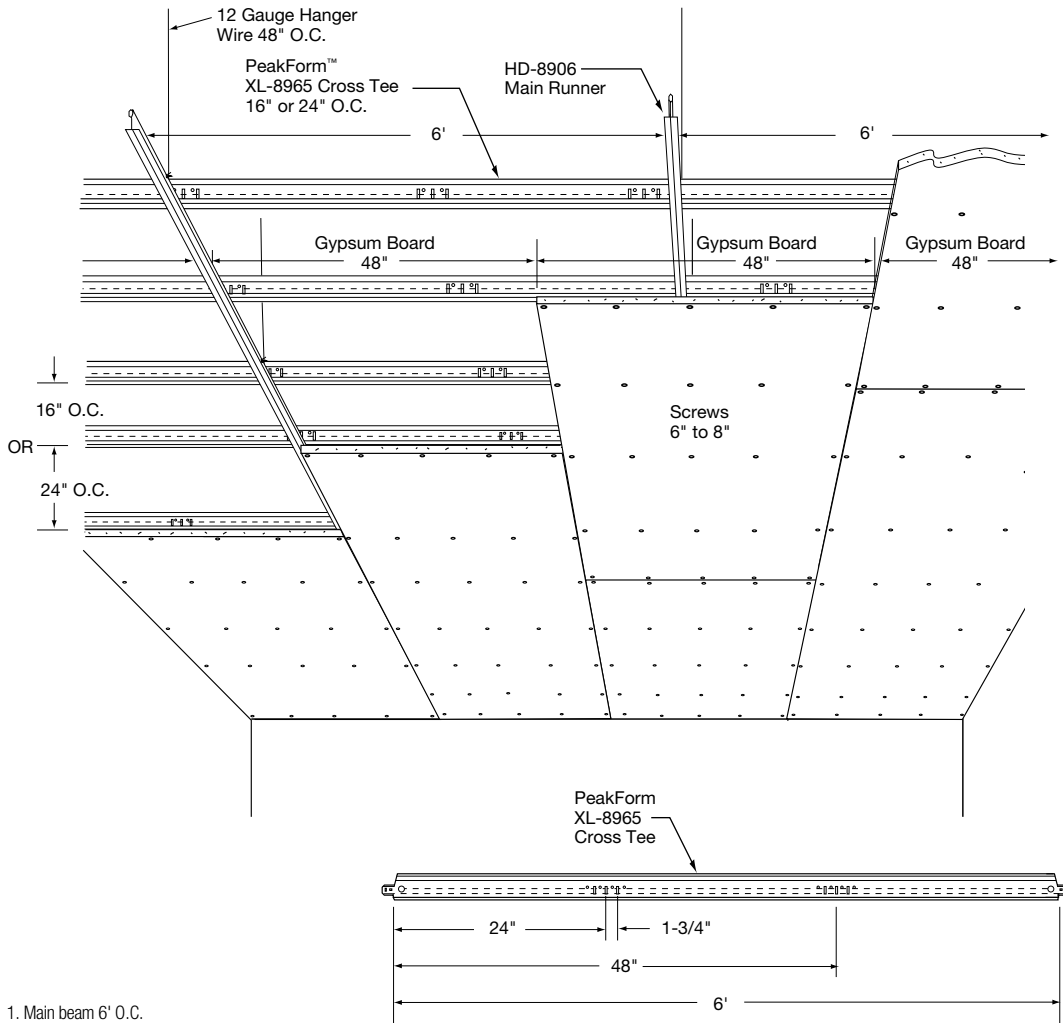
Component Combination	Max Load in lbs/SF (L/240)	Max Load in lbs/SF (L/240)	Max Load in lbs/SF (L/240)	Max Load in lbs/SF (L/240)
	Wires 48" O.C. / Tees 24" O.C.	Wires 48" O.C. / Tees 16" O.C.	Wires 42" O.C. / Tees 16" O.C.	Wires 48" O.C. on Main Beams / Wires mid-span on Tees/Tees 24" O.C.
HD8906/XL8965 (Main Beams 6' O.C.)	3.20	4.66	4.8	9.38

NOTE: 5/8" drywall weighs 2.4 lbs/SF or less (tees installed 16" or 24" O.C.)  
1/2" drywall weighs 2.0 lbs/SF or less (tees installed 16" O.C. only)  
\*For other combinations, consult TechLine at 1 877 276-7876

# DRYWALL GRID SYSTEMS

## 6' DGS Cross Tee

### INSTALLATION NOTES



1. Main beam 6' O.C.
2. Hanger wire 2', 3', or 4' O.C.
3. Rout holes for Type F light fixture
4. Reduction in hanger wire and main beam
5. UL® Fire Rated: Fire Guard™ components meet UL Design Listings D501, D502, G523, G524, G526, G527, G528, G529, G531, J502, L502, L508, L513, L515, L525, L526, L529, L564, P501, P506, P507, P508, P509, P510, P513, P514.
6. Faster installation
7. Tees 16" O.C. support two layers of 5/8" gypsum board (with hanger wire 42" O.C. along main beams)
8. Tees 24" O.C. support one layer of 5/8" gypsum board (with hanger wire 48" O.C. along main beams)
9. Gypsum board attached to cross tees
10. Bridging on cross tees requires extra wire for weight of light fixtures, diffusers, and other mechanical

**Ideal for 15' wide Bedrooms in Condos and Hotels**  
 Need only two rows of main beams 6' O.C. Then cut border tee in half (no waste).

