

DRYWALL GRID SYSTEM SEISMIC INSTALLATION REQUIREMENTS

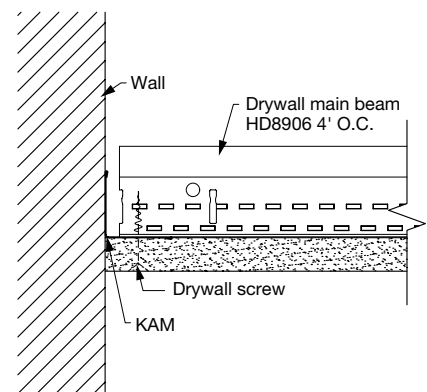
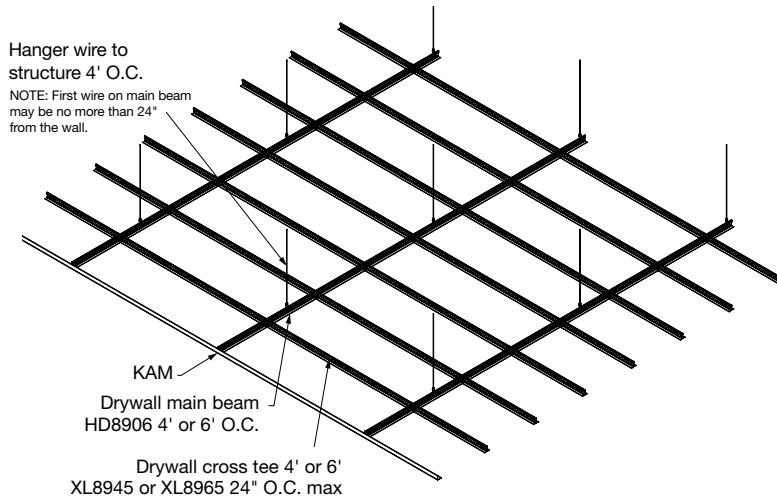
Scope: ASTM C-1858

This recommendation applies to the installation requirements of direct-hung Armstrong Drywall Grid ceiling systems, receiving flat, single-level gypsum panel products surrounded on all sides by a wall, bulkhead, or soffit braced to the building structure to resist the effects of earthquake ground motions.

DGS Seismic Installation Components/Conditions	Category A, B	Category C	Category D, E, and F
Hanger wire	12 ga.	12 ga.	12 ga.
Hanger wire spacing on main beams	4' O.C.	4' O.C.	4' O.C.
Hanger wire plumb	1' in 6', or add counter splayed wire	1' in 6', or add counter splayed wire	1' in 6', or add counter splayed wire
Vertical hanger wires on main beams at perimeter wall	No more than 24"	No more than 24"	No more than 24"
Hanger wire wraps	3 within 3"	3 within 3"	3 within 3"
Substitute hanger wire for galvanized sheet metal or clips designed for hanging	Allowed	Allowed	Allowed
Terminal grid ends screwed to wall angle/channel	Required	Required	Required
Seismic separation joints	Not required	Not required	Not required
Perimeter wires on tees within 8" of wall angle	Not required	Not required	Not required
Minimum spacing between main beam/tee ends and wall molding	Not required	Not required	Not required
Spacing Bars/BERC clips on perimeter tees/main beams	Not required	Not required	Not required
Armstrong KAM/LAM face widths	1-1/4" Minimum	1-1/4" Minimum	1-1/4" Minimum
Seismic restraint splay wire pods or rigid bracing	Not required	Not required	Not required
Compression posts	Not required	Not required	Not required

Control Joint Notes: General industry guidance to reduce cracking of drywall

Interior ceiling applications	Maximum dimension in any direction	Maximum square feet
With perimeter relief	50 LF	2,500 SF
Without perimeter relief	30 LF	900 SF
Exterior ceiling applications	30 LF	900 SF
Drywall control joints	As required by drywall manufacturer	As required by drywall manufacturer



Inspiring Great Spaces®

Armstrong®
CEILING SOLUTIONS