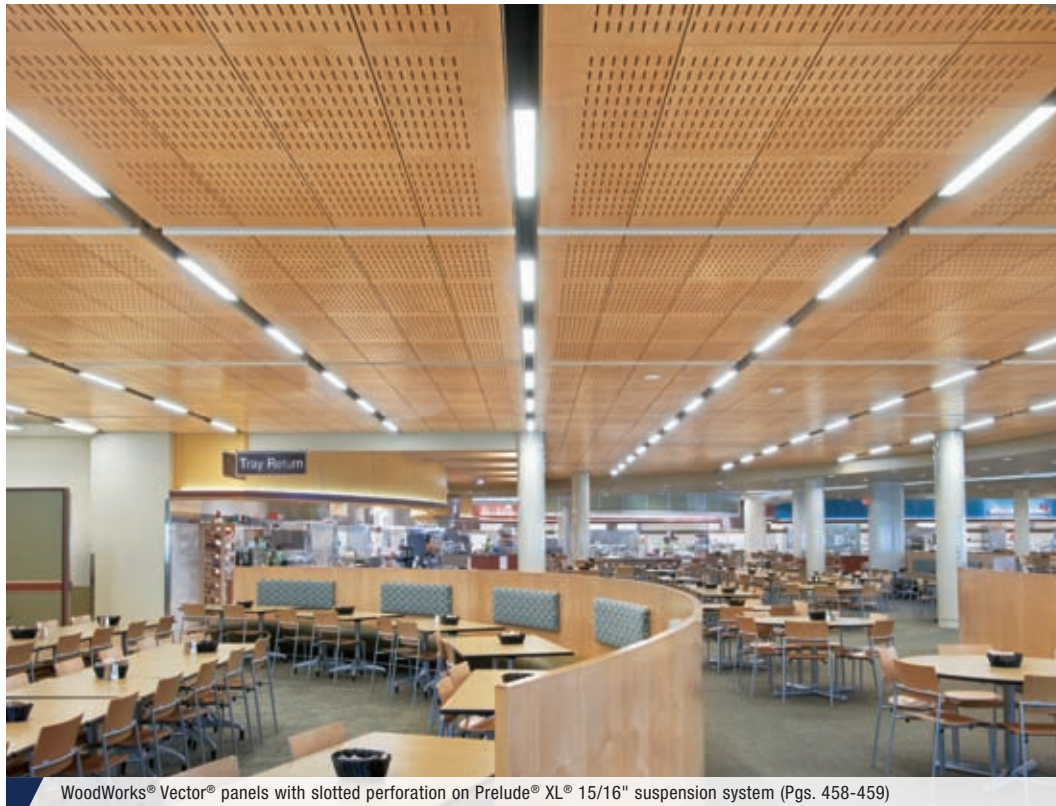


WOODWORKS®

Vector®



WoodWorks® Vector® panels with slotted perforation on Prelude® XL® 15/16" suspension system (Pgs. 458-459)

plus capabilities
to do more

armstrongceilings.com/capabilities
See more photos at:
armstrongceilings.com/photogallery

Fully accessible wood panels are available in multiple options for acoustical and aesthetic needs.

KEY SELECTION ATTRIBUTES

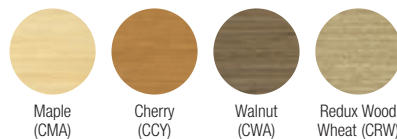
- Vector® edge detail provides safe and secure downward accessibility without tools and narrow reveal visual (1/4")
- Wide choice of standard and custom perforations
- Create upturns for continuous visuals and clouds with WoodWorks trim (see page 252 for trim options)
- Coordinating WoodWorks® walls available (see pages 520-521 for wall offering)
- 18" x 18" Tegular infill panels now available for Metaphors® Coffers; for details, visit armstrongceilings.com/metaphors
- Acoustical fleece backing option available for improved sound absorption
- Installation with minimum plenum clearance (Vector)
- Shorter lead times and lower cost than custom millwork

VENEERS Due to printing limitations, shade may vary from actual product.

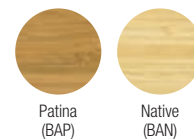
Natural Variations™ (Real Wood Veneers)



Constants™ (Real Wood Veneers)

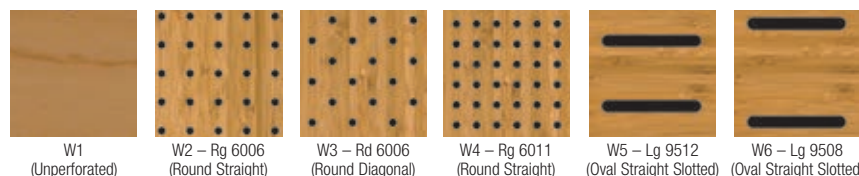


Bamboo*



* Veneer is rapidly renewable. Bamboo is a grass that only requires 3-7 years for maturity and does not have to be replanted after each harvest.

PERFORATION OPTIONS (Actual 1:6 scale shown)



Custom Perforations Available

NOTE: Slotted perforations run parallel to the length of the panel and borders vary with panel size.

WOODWORKS®

Vector®

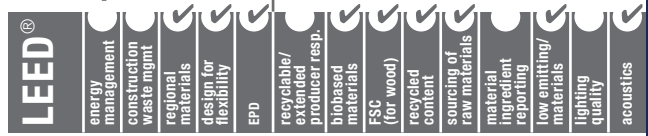


USDA
CERTIFIED
BIOBASED
PRODUCT
PRODUCT 100%



UP TO 75% RECYCLED CONTENT

For LEED contribution contact TechLine



VISUAL SELECTION

Edge Profile	Item No. ◆	Dimensions Nominal W x L x H (Inches) Custom Sizes Available	Perforations
WOODWORKS® Vector®			
15/16" Vector – 1/4" Reveal 	5401_ _ _ _ _	24 x 24 x 3/4" □	W1, W2, W3, W4, W5, W6
FSC®-certified WOODWORKS® Vector®			
15/16" Vector – 1/4" Reveal 	5403_ _ _ _ _	24 x 24 x 3/4" □	W1, W2, W3, W4, W5, W6
	6480_ _ _ _ _	12 x 48 x 3/4" □	
	6482_ _ _ _ _	24 x 48 x 3/4" □	

◆ When specifying or ordering, include the appropriate 2-digit perforation and 3-letter color suffixes. For veneers, sizes, and perforation patterns available as special order, call TechLine at 1 877 276-7876. NOTE: Vector® panels do not have fleece backer. Can be specified as a premium option.

PERFORMANCE

Fire Rating
Class A
Class A

ACOUSTICAL INFORMATION

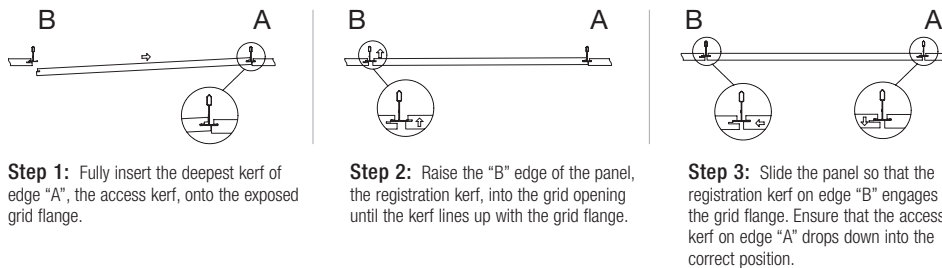
Dots represent high level of performance.

Perforation	NRC*	CAC
W1 	N/A	38
W2 	0.40	28
W3 	0.40	28
W4 	0.65	28
W5 	0.55	28
W6 	0.40	28

* Maximum NRC achieved with acoustical infill (item 8200100 or 5479, unless noted otherwise). For additional infill options, refer to Pg. 253.

EXAMPLE: **5401 W2 NLC**
 Panel Dimension/Type: 24" x 24" FSC-certified
 Perforation: W2 Round Straight Rg 6006
 Finish: Natural Variations Light Cherry

VECTOR PANEL INSTALLATION DETAILS



SUSPENSION SYSTEMS

15/16" Vector

 Prelude®
 Prelude suspension system is available in many standard colors. Other colors available as special order.

WOODWORKS TRIM INSTALLATION

Vector panel
 Nominal 1/2" vertical reveal
 Nominal 1/4" horizontal reveal
Wood Substrate Trim with Vector Panel
Aluminum Substrate Trim Assembly for Vector Panel

Woodworks® Perimeter Trim
 Woodworks® Vector® Border Clip
 Woodworks® Vector® Panel
 1/2" J
 7804 Angle Molding
Trim with Cut Vector Panel

PHYSICAL DATA

Material
 Fire-retardant particle board with face-cut veneers; FSC®-certified fire-retardant particle board with face-cut veneers (RA-COC-003601). For more information about FSC®-certified fire-retardant products, or to view our FSC®-certification letter, visit armstrongceilings.com/woodworksfs

Surface Finish
 Clear or tinted semigloss coating

Fire Performance
 ASTM E84 surface burning characteristics. Flame Spread Index 25 or less. Smoke Developed Index 50 or less.
 CAN/ULC S102 surface burning characteristics. Flame Spread Rating 25 or less. Smoke Developed Classification 50 or less.

ASTM E1264 Classification
 Composite – Fire Class A

Primary (Embodied) Energy
 See all LCA information on our EPDs.

Application Considerations
 Variation among panels may occur due to the natural characteristics of the wood and grain. It is very important that WoodWorks panels be climatized prior to installation. Relative humidity between 25% and 55%, and temperatures between 50°F and 86°F, must be maintained throughout the life of the product.

Design Considerations
 Different panel sizes should not be installed together. Perforated border on 24" x 72" panels are different than other panel sizes.
 Vector safety clips included with panels may be visible through panel perforations.

Specification Consideration
 Attention: For FSC-certified wood products to maintain their CoC certification, products must be sold to a CoC-certified distributor or directly to the installing contractor. Failure to do so breaks the CoC.

Seismic Restraint
 WoodWorks Vector solid wood panels have been engineered, tested, and approved for application in all seismic areas when installed per Armstrong Ceilings installation instructions.

Warranty
 Details at armstrongceilings.com

Weight; Square Feet
 Panels – 2.75 lbs/SF

TechLine / 1 877 276-7876
armstrongceilings.com/woodworks
 (search: woodworks vector)

BPCS-5416-319

LEED® is a registered trademark of the U.S. Green Building Council®
 Rainforest Alliance Certified™ is a trademark of Rainforest Alliance.
 FSC® is a registered trademark of FSC Forest Stewardship Council®, A.C., license code FSC-C007626. All other trademarks used herein are the property of AWI Licensing LLC and/or its affiliates
 © 2019 AWI Licensing LLC Printed in the United States of America