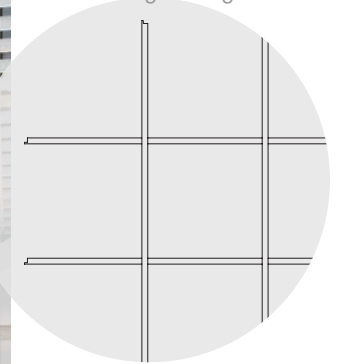
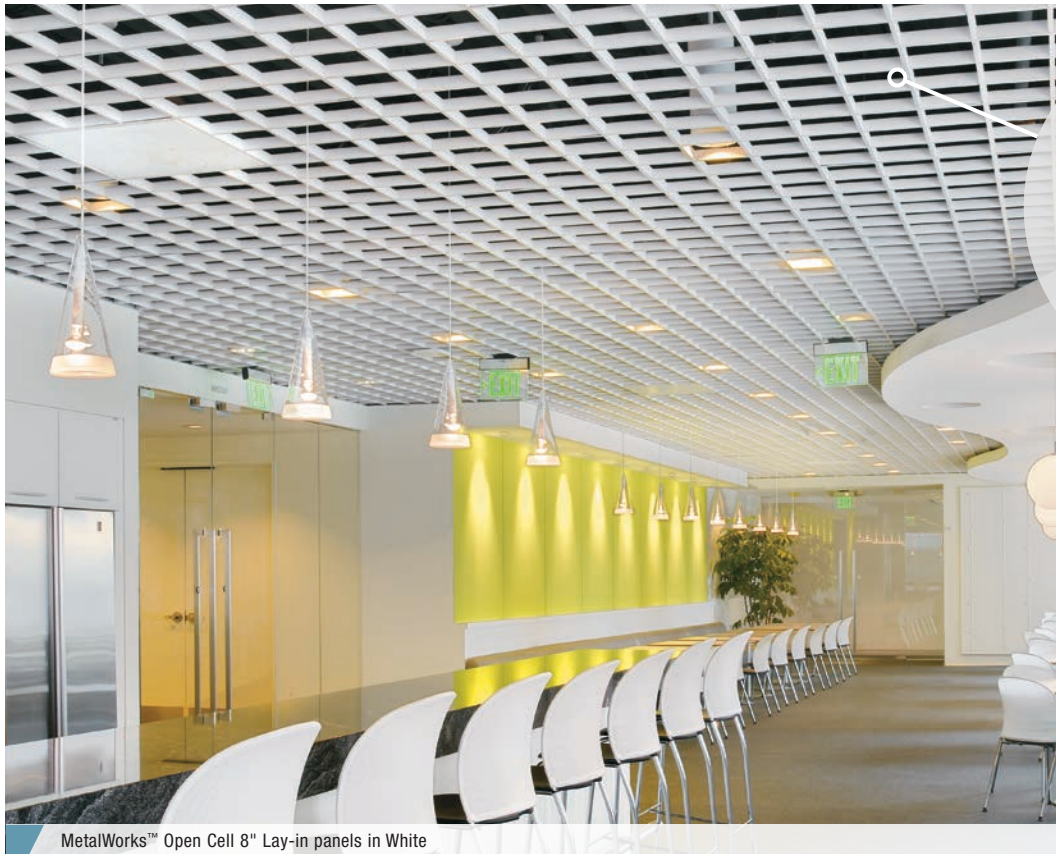


METALWORKS™ Open Cell

Square Lay-in

CAD/Revit® drawings at:
armstrongceilings.com



plus capabilities
to do more

armstrongceilings.com/capabilities
 See more photos at:
armstrongceilings.com/photogallery

MetalWorks™ Open Cell 8" Lay-in panels in White

Durable Open Cell panels are 100% accessible and offer a clean, modern design option.

KEY SELECTION ATTRIBUTES

- Open look with crisp, white finish
- Variety of design options
- Helps mask the plenum
- Lay-in system is fast and easy to install in a standard suspension system
- Framed 24" x 24" panels create seamless visual; no need for painted grid
- Durable post-production powder-coated finish

COLOR SELECTION Due to printing limitations, shade may vary from actual product.



White
(WH)



Custom Colors
Available

METALWORKS™ Open Cell Square Lay-in


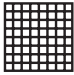
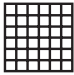
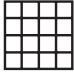
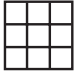
UP TO **85%** RECYCLED CONTENT
For LEED contribution contact TechLine

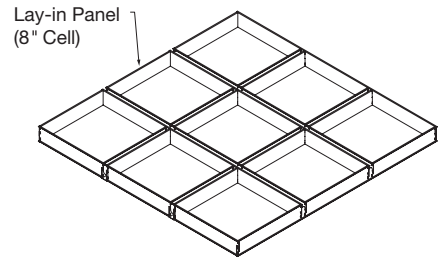
LEED®	energy management	construction waste mgmt	regional materials	design for flexibility	EPD	recyclable/extended producer resp.	biobased materials	recycled content	sourcing of raw materials	material ingredient reporting	low emitting materials	lighting quality	acoustics
-------	-------------------	-------------------------	--------------------	------------------------	-----	------------------------------------	--------------------	------------------	---------------------------	-------------------------------	------------------------	------------------	-----------

LOCATION DEPENDENT

WITH INFILL PANEL

VISUAL SELECTION

Edge Profile	Item No.	Dimensions (Inches) W x L Custom Sizes Available	Interior Cell Size	% Open	Fire Performance
METALWORKS™ Open Cell Square Lay-in					
9/16" Square Lay-in 	6188	24" x 24"		75%	Class A
	6189	24" x 24"		81%	Class A
	6193	24" x 24"		87%	Class A
	6194	24" x 24"		90%	Class A



Installs in standard 9/16" T-Bar suspension system

ACCESSORIES

Item No.	Description	Item No.	Description
6106	3" Metal Infill Panel	6068	6" Metal Infill Panel
6067	4" Metal Infill Panel	6109	8" Metal Infill Panel

PHYSICAL DATA

Material
Aluminum, 0.016" thick

Dimensions
Panel: Nominal 24 x 24 x 1-1/2" blade height x 9/16" blade width (matches 9/16" suspension system)

Interior Cell Sizes
3", 4", 6", and 8"
Custom cell sizes also available upon request as premium options.

Surface Finish
Standard white in a powder-coated, post-production painted finish, as well as Custom colors. Contact TechLine for custom color matching requests.

Fire Performance
ASTM E84 surface burning characteristics. Flame Spread Index 25 or less. Smoke Developed Index 50 or less.

Fire Performance with Sprinklers
MetalWorks™ Open Cell ceilings may affect the planned fire sprinkler water distribution pattern, or possibly delay or accelerate the activation of the sprinkler or fire detection systems by channeling heat from a fire either toward or away from the device.

Designers and installers are advised to consult a fire protection engineer, NFPA 13, and local codes for guidance where automatic fire detection and suppression systems are present.

Seismic Restraint
MetalWorks Open Cell Lay-in panels have been engineered, tested, and approved for application in all seismic areas when installed per Armstrong installation instructions.

Warranty
Details at armstrongceilings.com

Weight/Carton
Ranges from 7-20 lbs/ctn depending on interior cell size

Square Feet/Carton
40 SF/ctn (panels)

