

# METALWORKS™ Torsion Spring/ Torsion Spring Exterior

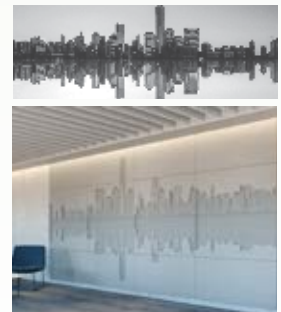
smooth texture

*Now with  
Create! Custom  
Perforations*



MetalWorks™ Torsion Spring panels with custom perforations in Silverlume with Prelude® XL® 15/16" suspension system (Pgs. 458-459)

## CREATE!™ custom perforations



Art and acoustics blend with MetalWorks™ Create!™ custom perforated panels. More at: [armstrongceilings.com/metalworkscreate](http://armstrongceilings.com/metalworkscreate)

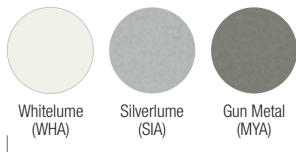
Large-size concealed panels offer a monolithic visual with 100% downward accessibility.

### KEY SELECTION ATTRIBUTES

- new** • Now, transform your images onto custom perforated MetalWorks™ Create!™ ceiling and wall panels for a unique aesthetic plus acoustical performance
- Available with PureWood™ real wood veneers in three standard finishes as well as Reflections™ laminates
- MetalWorks Torsion Spring is part of the Sustain™ portfolio and meets the most stringent sustainability compliance standards today\*
- Choose from a variety of standard panel sizes that install with pre-slotted standard 15/16" suspension system
- new** • 48" x 48" panels are available as a premium option
- Interior panels feature swing-down accessibility
- For exterior applications, choose from 24 x 24 x 1-1/2" and 24 x 48 x 1-1/2" standard panel sizes
- Reflections™ laminate finishes provide superior wood-look visual with printed vinyl bonded to aluminum; visuals other than the ones shown are also available
- NRC values up to 0.90 with fiberglass infill panels (select perforation patterns)

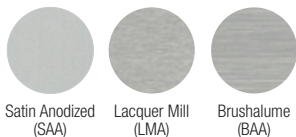
### COLOR SELECTION Due to printing limitations, shade may vary from actual product.

#### MetalWorks™ – Interior and Exterior



\* Part of the Sustain™ portfolio, meeting sustainability compliance standards (M1 – unperforated panels only)

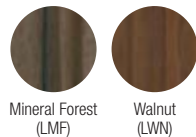
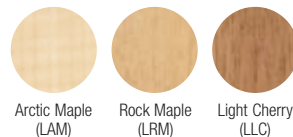
#### MetalWorks – Interior Only



#### Reflections™ Laminate Finishes – Interior and Exterior



#### Reflections Laminate Finishes – Interior Only

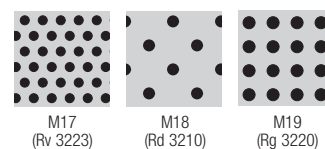
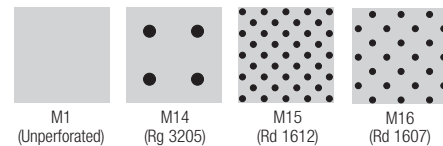


#### PureWood Veneer Finishes – Interior Only

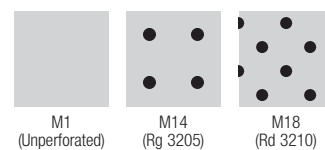


### PERFORATION OPTIONS (1:2 scale shown)

#### Painted and Laminate Perforations



#### PureWood Perforation Options (1:2 scale shown)



# METALWORKS™ Torsion Spring/ Torsion Spring Exterior

smooth texture



Declare™  
Living Building  
Challenge Compliant

High Performance  
Sustainable  
Ceiling Systems  
Unperforated (M1)



For LEED contribution contact TechLine

## VISUAL SELECTION

Edge Profile	Item No. ♦	Dimensions (Inches) W x L x D Custom Sizes Available
<b>METALWORKS™ Torsion Spring Square with Acoustical Fleece</b>		
Torsion Spring Square 15/16" 	7209_ _ _ _ _	24 x 24 x 1-1/2"
	7210_ _ _ _ _	24 x 48 x 1-1/2"
	7211_ _ _ _ _	24 x 72 x 1-1/2"
	7212_ _ _ _ _	24 x 96 x 1-1/2"
	7213_ _ _ _ _	30 x 30 x 1-1/2"
<b>Exterior Panels</b>		
Torsion Spring Square 15/16" 	7225_ _ _ _ _	24 x 24 x 1-1/2"
	7226_ _ _ _ _	24 x 48 x 1-1/2"

NOTE: 48" x 48" panels are available as a premium option

- ♦ When specifying or ordering, include the appropriate perforation and color suffix with the item number (e.g., 7209 M 1 4 L M A).
- \* Light reflectance is for unperforated Whitelume.
- \*\* Unperforated Whitelume light reflectance
- \*\*\* Perforated Whitelume light reflectance

## PERFORMANCE

Dots represent high level of performance.

Light Reflect*	Springs per Panel
0.77	4
0.77	4
0.77	6
0.77	6
0.77	4
0.77** 0.61***	4
0.77** 0.61***	4

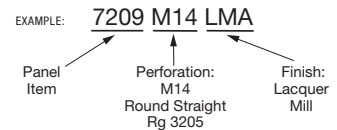
LOCATION DEPENDENT

## ACOUSTICAL INFORMATION

Perforation	NRC with acoustical fleece	NRC with 1" fiberglass infill panel ††
	NRC (•)	NRC (•)
M1† 	Unperforated	-
M14† 	Rg 3205	0.55 •
M15† 	Rd 1612	0.70 •
M16† 	Rd 1607	0.70 •
M17† 	Rv 3223	0.70 •
M18† 	Rd 3210	0.65 •
M19† 	Rg 3220	0.75 •

† Available for exterior applications  
†† Maximum NRC achieved with acoustical infill (item 8200100 or 5823).

For infill panel information, refer to Pg. 156.



## PHYSICAL DATA

**Material**  
Aluminum – thickness 0.040"  
Aluminum – thickness 0.060" (item 7226 only)

**Surface Finish**  
Reflections™ laminates: Vinyl-faced membrane  
Painted finishes: Factory-applied polyester paint  
Custom colors and finishes available.

**Fire Performance**  
Painted aluminum finishes tested per ASTM E84.  
Flame Spread Index 25 or less. Smoke Developed Index 50 or less.

Laminate and Purewood™ finishes tested per ASTM E84. Flame Spread Index 75 or less. Smoke Developed Index 450 or less.

**ASTM E1264 Classification**  
Fire Class A – Painted  
Fire Class B – Laminates

**Acoustical Options**  
Perforated panels are supplied with a black fiberglass fleece to absorb sound.

**Recycled Content**  
Minimum 25%. Up to 80% recycled content available.

### Design Considerations

Anodized and Lacquer Mill finishes may vary in shade between production runs as well as over time. Sizes can be mixed and matched on non-perforated panels only.

30" x 30" panels have a directional finish that is perpendicular to the main beams; all other panel sizes have a directional finish that is parallel to the main beams.

MetalWorks™ steel and aluminum panels are made at different manufacturing facilities that use different paint systems. Because of this, similar colors, i.e., White and Whitelume, are not exact color matches. Please consider this when designing adjacent spaces with multiple MetalWorks products.

For PureWood finishes, variation among panels may occur due to the natural characteristics of the wood and grain.

### Wind Uplift Performance

24" x 24" and 24" x 48" panels noted for exterior flat applications tested for wind uplift Classes 30, 60, and 90. Specific installation instructions to meet these classes are available.

For more information, visit [armstrongceilings.com](http://armstrongceilings.com) or contact TechLine customer support at 1 877 276-7876.

### Design Support

Project management assistance is available by calling TechLine customer support at 1 877 276-7876.

### Seismic Restraint

MetalWorks Torsion Spring panels have been engineered, tested, and approved for application in all seismic areas when installed per Armstrong Ceilings installation instructions.

### Warranty

One (1) year limited warranty.  
Details at [armstrongceilings.com](http://armstrongceilings.com)

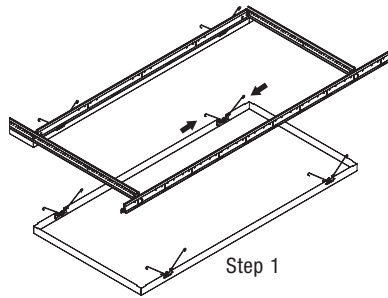
### Weight

0.69 lbs/SF  
0.86 lbs/SF (item 7226)

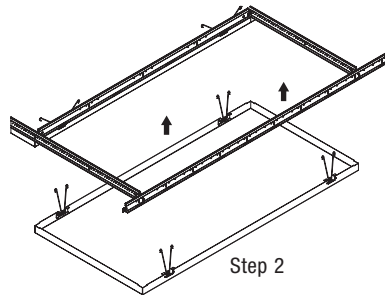
# METALWORKS™ Torsion Spring/ Torsion Spring Exterior

## Installation Details

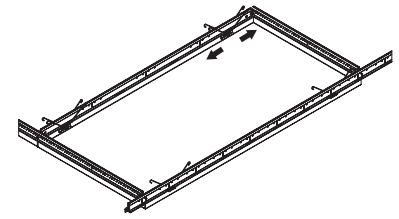
### HOW TO INSTALL PANELS



Step 1

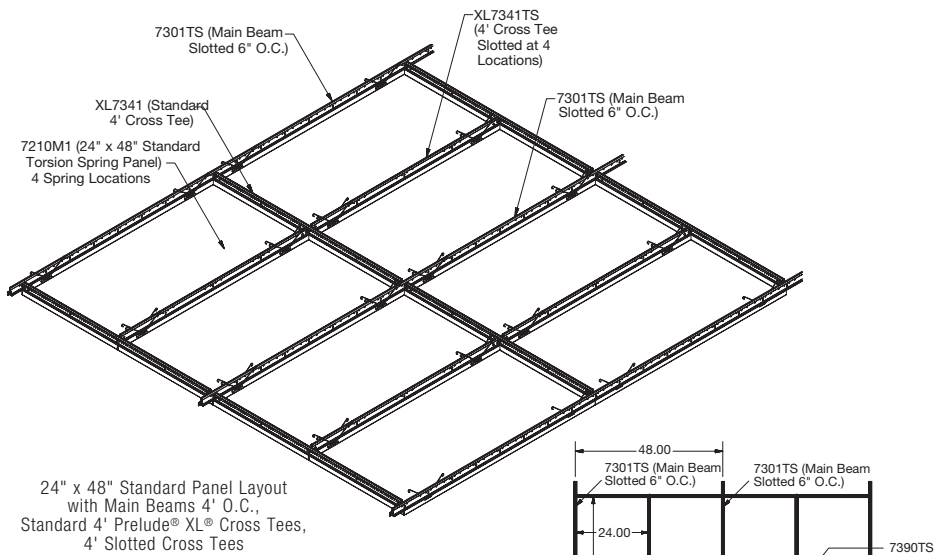


Step 2

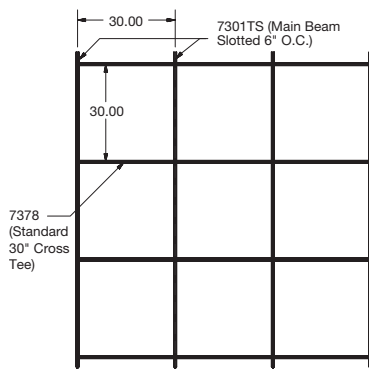


Step 3

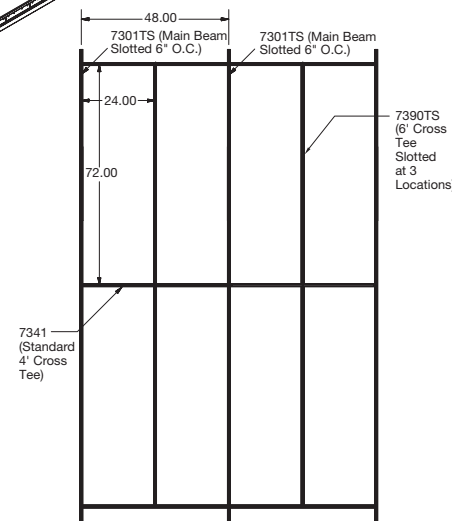
### INTERIOR INSTALLATION DETAILS – For exterior details, consult the MetalWorks™ Exterior Torsion Spring installation instructions, BPLA-297922, on our web site.



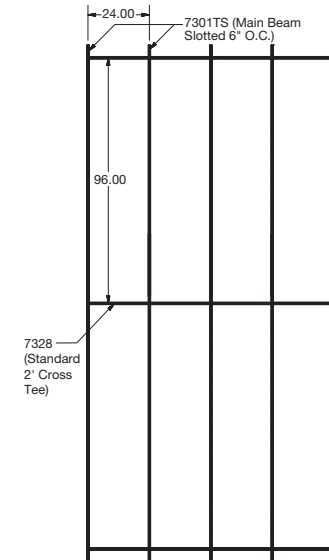
24" x 48" Standard Panel Layout  
with Main Beams 4' O.C.,  
Standard 4' Prelude® XL® Cross Tees,  
4' Slotted Cross Tees



7378  
(Standard  
30" Cross  
Tee)

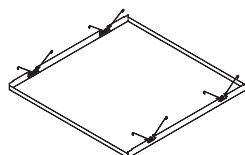


7341  
(Standard  
4' Cross  
Tee)

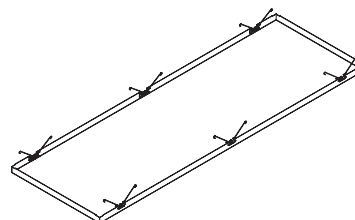


7328  
(Standard  
2' Cross  
Tee)

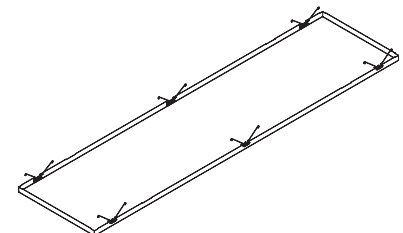
2x8 Grid Layout (Scale - 1:25)



Suspension System Layout  
for 30" x 30" Panels



Suspension System Layout  
for 24" x 72" Panels



Suspension System Layout  
for 24" x 96" Panels



# METALWORKS™ Torsion Spring/ Torsion Spring Exterior

## Accessories & Suspension Systems

### ACCESSORIES

Item No. ♦	Description	Dimensions (Inches) Nominal W x L x H	Color	Pieces/ Carton
7125_ _ _	Box Molding (for Laminates and PureWood™, Black is recommended)	2 x 96 x 1.5"	WHA, SIA, MYA, SAA, LMA, BAA, BL	10
7147_ _	Torsion Spring Perimeter Trim (Extruded) (for Laminates and PureWood, Black is recommended)	1 x 120 x 4"	WH, SG, MY, BL*	6
7131_ _ _	Torsion Spring Perimeter Trim (Formed)	1 x 96 x 4.25"	LMA, BAA, SAA	6
7126	Spreader Hold Down	1 x 10-5/8 x 1-1/2"	N/A	10
5823	BioAcoustic™ Infill Panel	24 x 24 x 5/8"	Black	12
8200100	1" Fiberglass Infill Bag	24 x 24 x 1"	Black (Gloss)	12
7129	Torsion Spring Hook Access Tool	N/A	N/A	1
7130	Torsion Spring Suction Access Tool	N/A	N/A	1

♦ When specifying or ordering, include the appropriate color code with the item number (e.g. 7131 K M A)

\* Coordinates with WHA, SIA, MYA Torsion Spring Panel finish

### SUSPENSION SYSTEMS

Item No.	Description	Dimensions (Inches)
<b>15/16" Prelude® XL® Suspension System</b> – Some items slotted for Torsion Spring. See below.		
7301TS	Prelude XL 12' HD Main Beam – slotted for Torsion Spring	144 x 15/16 x 1-11/16"
XL7341TS	Prelude XL 4' Cross Tee – slotted for Torsion Spring	48 x 15/16 x 1-11/16"
XL7390TS	Prelude XL 6' Cross Tee – slotted for Torsion Spring	72 x 15/16 x 1-11/16"
XL7378	Prelude XL 30" Cross Tee	30 x 15/16 x 1-11/16"
XL8320	Prelude XL 2' Cross Tee	24 x 15/16 x 1-11/16"
XL7341	Prelude XL 4' Cross Tee	48 x 15/16 x 1-11/16"
<b>Exterior Suspension System</b>		
<b>15/16" Prelude XL</b> – Some items slotted for Torsion Spring. See below.		
7301G90ATS	Prelude XL 12' HD Exterior Main Beam – slotted for Torsion Spring	144 x 15/16 x 1-11/16"
XL7341G90ATS	Prelude XL 4' Exterior Cross Tee – slotted for Torsion Spring	48 x 15/16 x 1-11/16"
XL7321G90A	Prelude XL 2' Exterior Cross Tee	24 x 15/16 x 1-11/16"

LEED® is a registered trademark of the U.S. Green Building Council  
 Declare™ is a service mark of International Living Future Institute  
 Revit® is a registered trademark of Autodesk, Inc.  
 All other trademarks used herein are the property of AWI Licensing LLC  
 and/or its affiliates © 2018 AWI Licensing LLC  
 Printed in the United States of America

