

# AXIOM® Transitions

Trim  
straight & curved

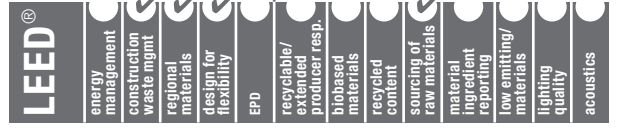
Declare<sup>SM</sup>  
Living Building  
Challenge Compliant

SUSTAIN<sup>SM</sup>  
High Performance  
Sustainable  
Ceiling Systems



50% ALUMINUM RECYCLED CONTENT

Calculate LEED contribution at  
armstrongceilings.com/greengenie



LOCATION DEPENDENT



Axiom® Transitions trim

Fast and easy way to create crisp transitions between ceiling planes regardless of material type.

## KEY SELECTION ATTRIBUTES



- Adjustable Trim Clip (Item 7239) makes Axiom Transitions compatible with WoodWorks® and MetalWorks™ panels or planks that drop greater than 3/8" below the grid flange
- Axiom Transitions is an aluminum extrusion to create a smooth transition between drywall and suspended ceilings (mineral fiber, metal, or wood)
- Extruded aluminum trim provides more crisp edge detailing compared to conventional roll-formed steel systems
- Axiom is part of the Sustain™ portfolio and meets the most stringent sustainability compliance standards today
- Compatible with Armstrong® suspension systems and Drywall Grid Systems
- Acoustical-to-Drywall Transitions** are available straight and curved for perfect fit and finish every time
- Axiom Transitions – Vector®** is available straight only for use with full size Vector panels (field cutting Vector panels can be avoided)
- Axiom Transitions – Elevation Change** accommodates Acoustical-to-Acoustical, Acoustical-to-Drywall, Drywall-to-Acoustical, Drywall-to-Drywall height transitions of 2", 4", 6", 8", and 10"
- Minimum Bend Radius for Transitions – Elevation Change 2", 4", 6", and 8" is 48", 10" is 60"
- Minimum Bend Radius for Transitions – No Elevation Change (refer to the middle of page 2 for minimum bend radius)

## TYPICAL APPLICATIONS

- Offices
- Retail
- Education
- Hospitality
- Healthcare

## VISUAL SELECTION

Item No.♦	Description	Dimensions (Inches)	
<b>AXIOM Transitions (no elevation change)</b>			
<input type="checkbox"/> AXSJ	10' Axiom® Slip Joint	120 x 24 x 2-1/16"	
<input type="checkbox"/> AXTRVESTR_ _	Straight Transition for Vector	120 x 2-9/16 x 1-11/16"	
NOTE: For use with full-sized Vector panels.			
<input type="checkbox"/> AXTR7901STR_ _	9/16" Shadow Reveal Transition Molding, Straight	120 x 2-9/16 x 1-13/16"	
<input type="checkbox"/> AXTR7901CUR_ _	9/16" Shadow Reveal Transition Molding, Curved	Vary x 2-9/16 x 1-13/16"	
<input type="checkbox"/> AXTR7902STR_ _	15/16" Shadow Reveal Transition Molding, Straight	120 x 2-9/16 x 2-3/16"	
<input type="checkbox"/> AXTR7902CUR_ _	15/16" Shadow Reveal Transition Molding, Curved	Vary x 2-9/16 x 2-3/16"	
<input type="checkbox"/> AXTR7904STR_ _	15/16" Flush Transition Molding, Straight	120 x 2-9/16 x 1-3/4"	
<input type="checkbox"/> AXTR7904CUR_ _	15/16" Flush Transition Molding, Curved	Vary x 2-9/16 x 1-3/4"	
<input type="checkbox"/> AXTR7905STR_ _	9/16" Flush Transition Molding, Straight	120 x 2-9/16 x 1-3/8"	
<input type="checkbox"/> AXTR7905CUR_ _	9/16" Flush Transition Molding, Curved	Vary x 2-9/16 x 1-3/8"	
<input type="checkbox"/> AXTR7906STR_ _	"F" Type Molding, Straight	120 x 1-13/16 x 1-11/16"	
<input type="checkbox"/> AXTR7906CUR_ _	"F" Type Molding, Curved	Vary x 1-13/16 x 1-11/16"	

# AXIOM® Transitions

Trim  
straight & curved

## VISUAL SELECTION continued

Item No.*	Description	Dimensions (Inches)	
<b>AXIOM Transitions (no elevation change)</b>			
<input type="checkbox"/> AXTR7907STR_ _	9/16" Tegular Transition Molding, Straight	120 x 2-9/16 x 1-11/16"	
<input type="checkbox"/> AXTR7907CUR_ _	9/16" Tegular Transition Molding, Curved	Vary x 2-9/16 x 1-11/16"	
<input type="checkbox"/> AXTR7908STR_ _	15/16" Tegular Transition Molding, Straight	120 x 2-9/16 x 1-13/16"	
<input type="checkbox"/> AXTR7908CUR_ _	15/16" Tegular Transition Molding, Curved	Vary x 2-9/16 x 1-13/16"	
<input type="checkbox"/> AXTR7909STR_ _	15/16" Tegular Transition Molding – 1" Height, Straight	120 x 2-13/16 x 1-11/16"	
<input type="checkbox"/> AXTR7909CUR_ _	15/16" Tegular Transition Molding – 1" Height, Curved	Vary x 2-13/16 x 1-11/16"	
<input type="checkbox"/> AXTR7910STR_ _	9/16" Tegular Transition Molding – 1" Height, Straight	120 x 2-13/16 x 1-3/8"	
<input type="checkbox"/> AXTR7910CUR_ _	9/16" Tegular Transition Molding – 1" Height, Curved	Vary x 2-13/16 x 1-3/8"	
<input type="checkbox"/> AX15DSCSTR_ _	1-1/2" Acoustical Double-sided Connection, Straight	120 x 1-15/16 x 1-1/2"	
<input type="checkbox"/> AX15DSCCUR_ _	1-1/2" Acoustical Double-sided Connection, Curved	Vary x 1-15/16 x 1-1/2"	
<input type="checkbox"/> AXFFP4_ _	Axiom Field Face Plate	120" – 4" Unslotted	
<input type="checkbox"/> AXFFP6_ _	Axiom Field Face Plate	120" – 6" Unslotted	

\* Add the 2-letter color suffix to the item number when specifying or ordering (e.g., AXTR2Q5S H A).

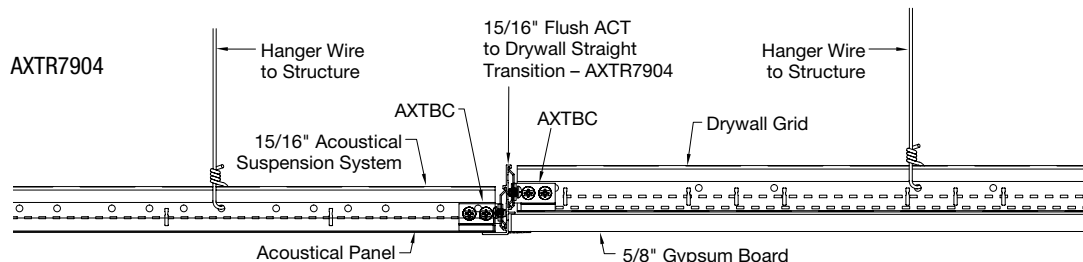
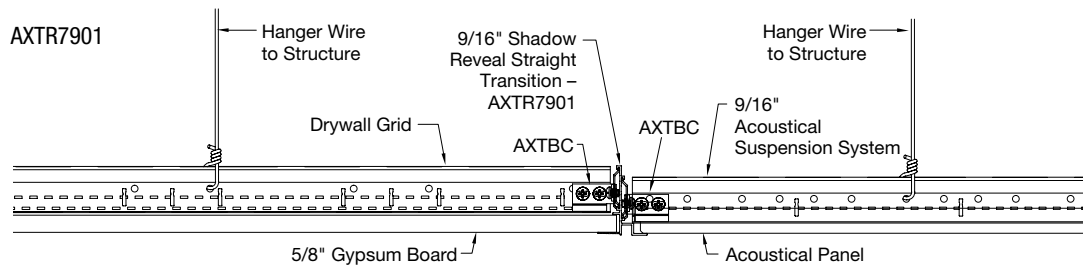
### MINIMUM BEND RADIUS:

Profile: AXTR7901 • Inside Curve – 48", Outside Curve – 120"

Profiles: AXTR7902, AXTR7904, AXTR7905 • Inside Curve – 96", Outside Curve – 600"

Profiles: AXTR7906, AXTR7907, AXTR7908, AXTR7909, AXTR7910 • Inside and Outside Curve – 48"

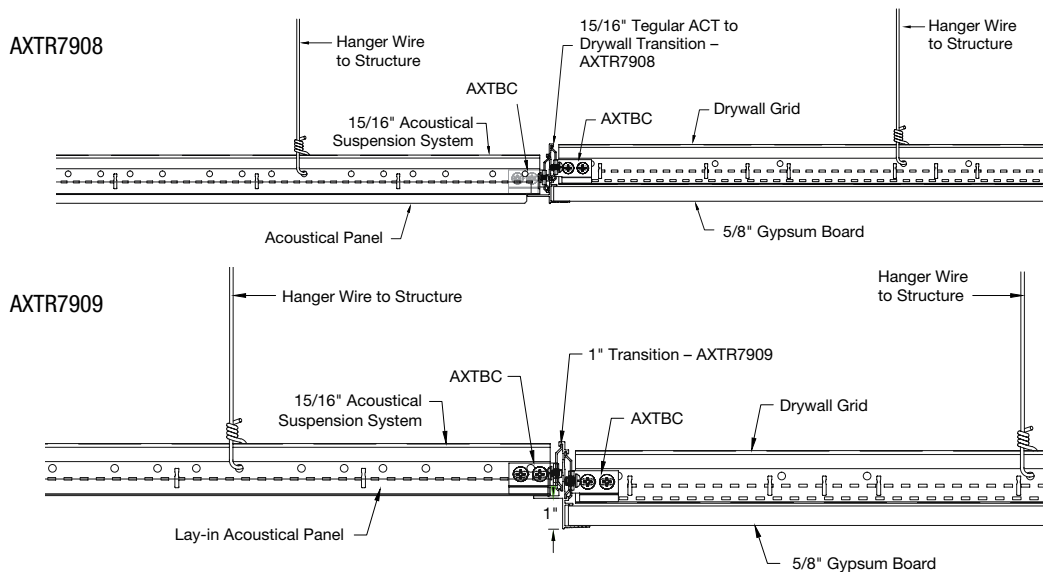
Profile: AX15DSC • Inside and Outside Curve – 60"



# AXIOM® Transitions

Trim  
straight & curved

VISUAL SELECTION continued



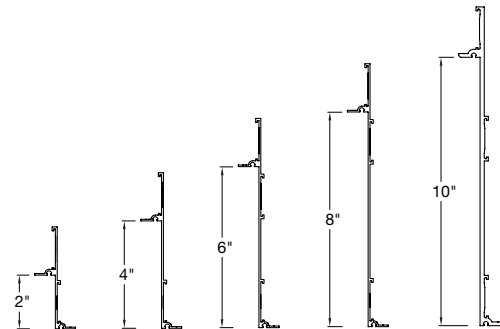
## AXIOM Transitions (elevation change)

Item No.*	Description	Dimensions (Inches)
<input type="checkbox"/> AXTR2STR_	2" Straight Transition	120 x 2 x 1-1/2"
<input type="checkbox"/> AXTR2CUR_**	2" Curved Transition	Vary x 2 x 1-1/2"
<input type="checkbox"/> AXTR4STR_	4" Straight Transition	120 x 4 x 1-1/2"
<input type="checkbox"/> AXTR4CUR_**	4" Curved Transition	Vary x 4 x 1-1/2"
<input type="checkbox"/> AXTR6STR_	6" Straight Transition	120 x 6 x 1-1/2"
<input type="checkbox"/> AXTR6CUR_**	6" Curved Transition	Vary x 6 x 1-1/2"
<input type="checkbox"/> AXTR8STR_	8" Straight Transition	120 x 8 x 1-1/2"
<input type="checkbox"/> AXTR8CUR_**	8" Curved Transition	Vary x 8 x 1-1/2"
<input type="checkbox"/> AXTR10STR_	10" Straight Transition	120 x 10 x 1-1/2"
<input type="checkbox"/> AXTR10CUR_***	10" Curved Transition	Vary x 10 x 1-1/2"

\* Add the 2-letter color suffix to the item number when specifying or ordering (e.g., AXTR2STR H A).

\*\* Minimum bending radius is 48" \*\*\* Minimum bending radius is 60"

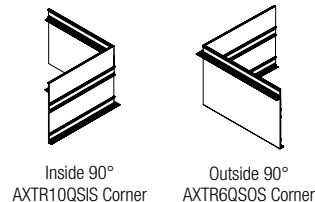
† Items available in Standard, Premium, and Blizzard White powder coated finish



Item No.*	Description	Dimensions (Inches)
-----------	-------------	---------------------

## AXIOM Transitions QuickShip™ Corners

<input type="checkbox"/> AXTR2Q SIS_	2" Transition Inside Corner	12 x 2 x 1-1/2"
<input type="checkbox"/> AXTR2Q SOS_	2" Transition Outside Corner	12 x 2 x 1-1/2"
<input type="checkbox"/> AXTR4Q SIS_	4" Transition Inside Corner	12 x 4 x 1-1/2"
<input type="checkbox"/> AXTR4Q SOS_	4" Transition Outside Corner	12 x 4 x 1-1/2"
<input type="checkbox"/> AXTR6Q SIS_	6" Transition Inside Corner	12 x 6 x 1-1/2"
<input type="checkbox"/> AXTR6Q SOS_	6" Transition Outside Corner	12 x 6 x 1-1/2"
<input type="checkbox"/> AXTR8Q SIS_	8" Transition Inside Corner	12 x 8 x 1-1/2"
<input type="checkbox"/> AXTR8Q SOS_	8" Transition Outside Corner	12 x 8 x 1-1/2"
<input type="checkbox"/> AXTR10Q SIS_	10" Transition Inside Corner	12 x 10 x 1-1/2"
<input type="checkbox"/> AXTR10Q SOS_	10" Transition Outside Corner	12 x 10 x 1-1/2"



\* Add the 2-letter color suffix to the item number when specifying or ordering (e.g., AXTR2Q SIS H A).

Axiom pre-mitered corners are field assembled

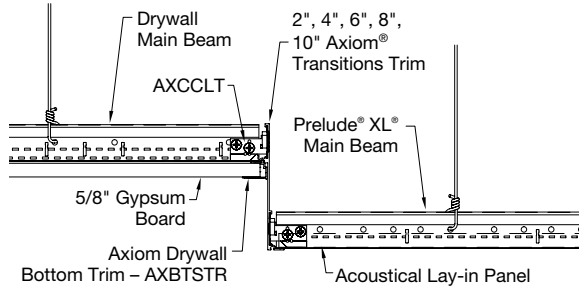
# AXIOM® Transitions

Trim  
straight & curved

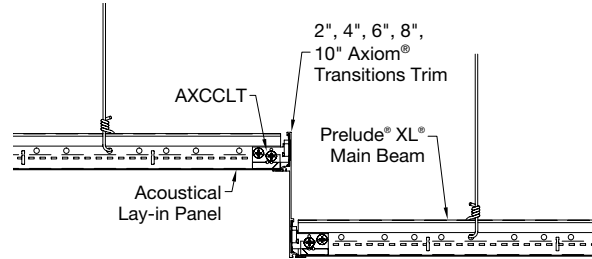
## DETAILS

CAD drawings available on [armstrongceilings.com/axiom](http://armstrongceilings.com/axiom)

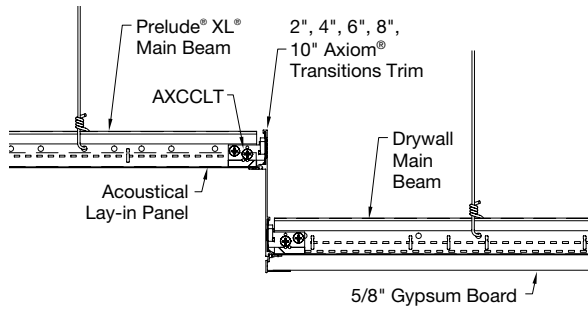
### Drywall-to-Acoustical



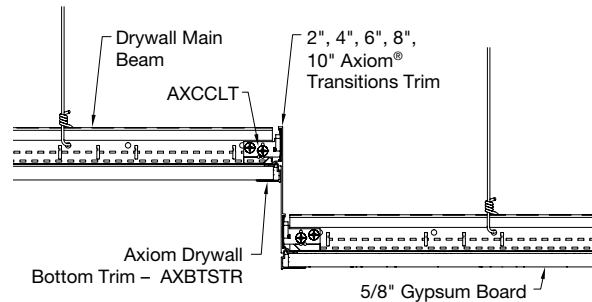
### Acoustical-to-Acoustical



### Acoustical-to-Drywall



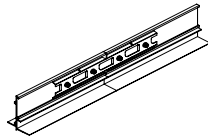
### Drywall-to-Drywall



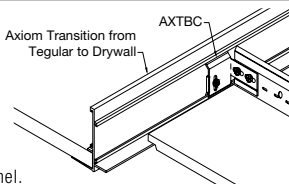
## ACCESSORIES

### Item Number Description

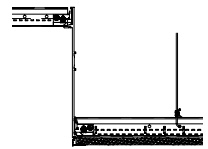
- AX4SPICEB** Splice Plate: Galvanized sheet steel formed to fit into the trim channel bosses and provide positive lock between abutting channels with factory-installed screws.



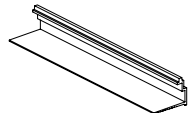
- AXTBC** T-Bar Connector Clip: Sheet aluminum formed to fit into special trim channel bosses and provide positive mechanical lock with factory-installed screw, screw-fastened connection to suspension system members which intersect the trim channel.



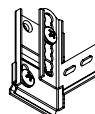
- AXCCLT** T-Bar Connector Twist Clip



- AXBTSTR** Axiom Bottom Drywall Trim Straight for 5/8" Drywall. 120 x 1-1/8 x 27/32". Used with Axiom Transitions items featuring an elevation change on a drywall condition.



- 7239** Adjustable Trim Clip\*\*\*

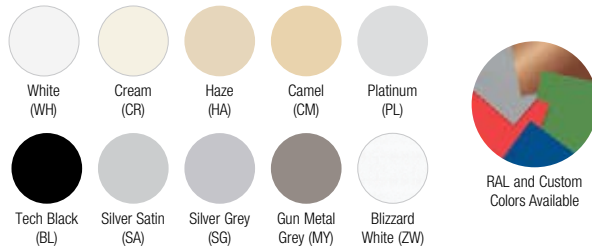


\*\*\* to be used with wood or metal panels that drop below grid by greater than 3/8" – only compatible with Transitions with no elevation change.

## COLORS

Due to printing limitations, shade may vary from actual product.

### Standard



**NOTE:** Colors available on Transitions (elevation change)  
360° paint finishes and custom colors available as special order  
Blizzard White finish available on select Axiom® Transitions

## PHYSICAL DATA

### Material

Trim Channel: Extruded aluminum, alloy 6063  
Hanging Clip: Commercial quality aluminum  
T-Bar Connector Clip: Commercial quality aluminum  
Splice Plate: Galvanized steel

### Surface Finish

Factory-applied baked polyester paint finish

### Cross Tee/Main Beam Interface

Flush fit

### End detail

Splice with screws

### Warranty

10-Year Limited Warranty  
30-Year System Warranty