

METALWORKS™ Mesh

Lay-in & Tegular



MetalWorks™ Mesh Linear Channeled panels in Antique Nickel with Prelude® 360° 15/16" suspension system (Pgs. 450)

plus capabilities
to do more

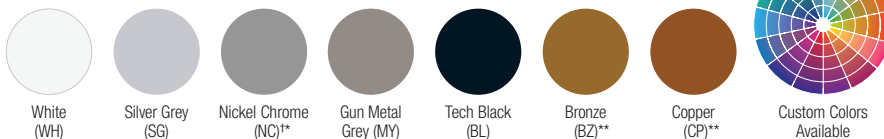
armstrongceilings.com/capabilities
See more photos at:
armstrongceilings.com/photogallery

Now get MetalWorks™ Mesh panels with updated patterns and tegular edges.

KEY SELECTION ATTRIBUTES

- new** • Thirty-two standard designs on 24" x 24" ceiling panels, including 8 new Tegular panels
- 10 standard colors, including new Antique Nickel finish, plus custom colors available
- Variety of standard colors, plus custom colors available
- Flexible design – use as accent borders, clouds, or full ceilings
- Simple installation – panels lay in standard 15/16" suspension system with borders or finished edges
- Can be used in Formations™ clouds
- Black acoustic panels provide sound absorption and hide plenum

MESH FINISHES – Powder Coated

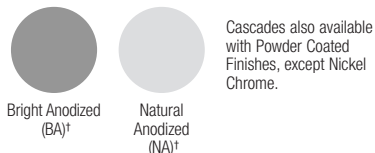


Due to printing limitations, shade may vary from actual product.

- * Not available on Cascades
- ** Premium options – may have longer lead times
- *** Not available on Expanded Metal or Cascades

† Not available as a coordinating suspension system color

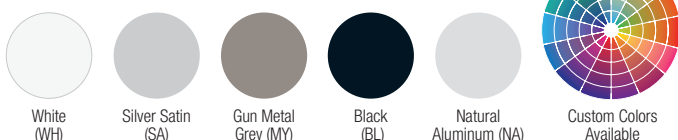
MESH FINISHES – Anodized for Cascades



MESH FINISHES – Plated Antique Nickel



COORDINATING SUSPENSION SYSTEM COLORS



NOTE: Accessories and clips (such as BERC2 clip) can be specified to color match the suspension system.

METALWORKS™ Mesh

Lay-in & Tegular

UP TO 25% RECYCLED CONTENT

For LEED contribution contact TechLine

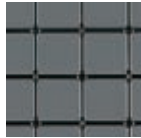
LEED®	energy management	construction waste to nrgmt	regional materials	design for flexibility	EPD	recyclable/extended producer resp.	bio-based materials	recycled content	sourcing of raw materials	material ingredient reporting	low emitting materials	lighting quality	acoustics
LOCATION DEPENDENT													
WITH INFILL PANEL													

WOVEN WIRE (1:6 scale shown)

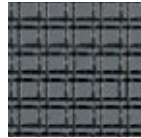
Square Weave – Square Lay-in



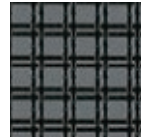
1Cell
Item 6415AM
Spacing: 0.86" x 0.86"
Wire Diameter: 0.11"
% Open Area: 76%



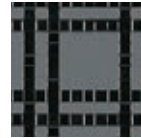
2Cell
Item 6416AM
Spacing: 1.39" x 1.39"
Wire Diameter: 0.135"
% Open Area: 82%



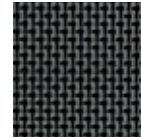
Twin Round Narrow
Item 6129AM
Spacing: 0.25"/0.57"/
0.25"/0.57"
Wire Diameter: 0.80"
% Open Area: 61%



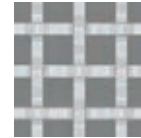
Twin Flat Narrow
Item 6412AM
Spacing: 0.25"/0.75"/
0.25"/0.75"
Wire Diameter: 0.92"
% Open Area: 53%



Twin Flat Wide
Item 6410AM
Spacing: 0.75"/2.25"/
0.75"/2.25"
Wire Diameter: 0.375" x 0.60"
% Open Area: 56%



Single Flat Narrow
Item 6411AM
Spacing: 0.25" x 0.25"
Wire Diameter: 0.92"
% Open Area: 21%



Single Flat Wide
Item 8199AM
Wire Dimension: 0.375" x 0.60"
% Open Area: 51%



Quad Round Narrow
Item 8198AM
Wire Diameter: 0.135"
% Open Area: 77%



Over-Under Square
Item 8200AM
Wire Dimension: 0.250" x 0.063"
% Open Area: 34%

Linear Weave – Square Lay-in



Single Mini
Item 6413AM
Spacing: 0.32" x 0.32"
Wire Diameter: 0.63"
% Open Area: 57%



Single Narrow
Item 6414AM
Spacing: 0.105"
Wire Diameter: 1.105"
% Open Area: 52%

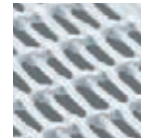


Triple Narrow
Item 6128AM
Spacing: 3.15" x 3.15"
Wire Diameter: 0.12"
% Open Area: 62%



Fine Rectangular
Item 8203AM
Wire Dimension: 0.80"
% Open Area: 47%

Linear Weave – Tegular



Fine Rectangular
Item 8195AM
Wire Diameter: 0.80"
% Open Area: 47%

Diamond Weave – Square Lay-in

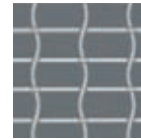


1Diamond
Item 6417AM
Spacing: 0.86" x 0.86"
Wire Diameter: 0.11"
% Open Area: 76%

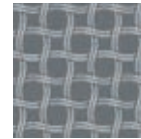


2Diamond
Item 6418AM
Spacing: 1.33" x 1.33"
Wire Diameter: 0.14"
% Open Area: 82%

Round Weave – Square Lay-in

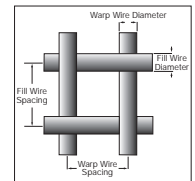


Round Rectangular
Item 8201AM
Wire Diameter: 0.105"
% Open Area: 75%



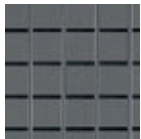
Twin Circle
Item 8202AM
Wire Diameter: 0.80"
% Open Area: 41%

Wire Key

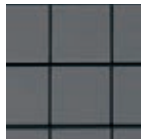


WELDED WIRE (Actual 1:6 scale shown)

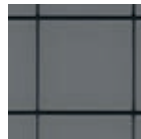
Welded Wire – Square Lay-in



1Cell
Item 6131AM
Spacing: 1.0" x 1.0"
Wire Diameter: 0.120"
% Open Area: 76%

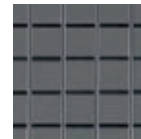


2Cell
Item 6132AM
Spacing: 2.0" x 2.0"
Wire Diameter: 0.120"
% Open Area: 88%

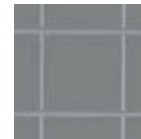


3Cell
Item 6133AM
Spacing: 3.0" x 3.0"
Wire Diameter: 0.120"
% Open Area: 92%

Welded Wire – Tegular



1Cell
Item 8190AM
Wire Diameter: 0.120"/.312"
Tegular Edge Rod
% Open Area: 78%



2Cell
Item 8191AM
Wire Diameter: 0.120"/.312"
Tegular Edge Rod
% Open Area: 88%



Linear Channel
Item 8196AM
Wire Diameter: 0.192"
Wire Dimension: 0.044" Channel
% Open Area: 50%



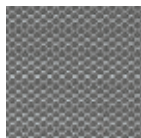
Linear Channel with Center Hole
Item 8197AM
Wire Diameter: 0.192"
Wire Dimension: 0.044" Channel
% Open Area: 60%

EXPANDED METAL (Actual 1:6 scale shown)

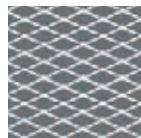
Expanded Metal – Square Lay-in



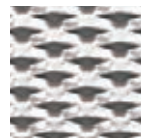
Lattice
Item 6136AM
Spacing: 0.036"
% Open Area: 73%



Scallops
Item 6137AM
Spacing: 0.048"
% Open Area: 61%



Trellis
Item 6138AM
Spacing: 0.060"
% Open Area: 70%

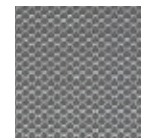


Cascades
Item 6139AM
Spacing: 0.080"
% Open Area: 23%

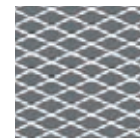
Expanded Metal – Tegular



Lattice
Item 8192AM
Wire Diameter: N/A
% Open Area: 73%

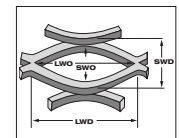


Scallops
Item 8193AM
Wire Diameter: N/A
% Open Area: 61%



Trellis
Item 8194AM
Wire Diameter: N/A
% Open Area: 70%

Expanded Metal Key



SWD – Short Way of Design
LWD – Long Way of Design

For detailed pattern information including spacing wire diameters and open area, refer to the MetalWorks Mesh brochure BPCS-3713



METALWORKS™

METALWORKS™ Mesh






Lay-in & Tegular


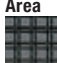

VISUAL SELECTION

PERFORMANCE

Dots represent high level of performance.

ACOUSTICAL INFORMATION

Edge Profile	Item Number ♦ Description	Panel Interior Opening Dimensions W x L x H (Inches)	% Open Area	Fire Rating	Wash	Scrub	Impact	Soil
WOVEN WIRE								
Square Weave								
Square Lay-in	6129AM __ Twin Round Narrow	24 x 24 x 1/4"	61%	Class A	•	•	•	•
	6410AM __ Twin Flat Wide	24 x 24 x 1/4"	56%	Class A	•	•	•	•
	6411AM __ Single Flat Narrow	24 x 24 x 1/4"	21%	Class A	•	•	•	•
	6412AM __ Twin Flat Narrow	24 x 24 x 1/4"	53%	Class A	•	•	•	•
	6415AM __ 1Cell	24 x 24 x 1/4"	76%	Class A	•	•	•	•
	6416AM __ 2Cell	24 x 24 x 1/4"	82%	Class A	•	•	•	•
	8199AM __ Single Flat Wide	24 x 24 x 1/4"	51%	Class A	•	•	•	•
	8198AM __ Quad Round Narrow	24 x 24 x 1/4"	77%	Class A	•	•	•	•
	8200AM __ Over-Under Square	24 x 24 x 1/4"	34%	Class A	•	•	•	•
Linear Weave								
Square Lay-in	6413AM __ Single Mini	24 x 24 x 1/4"	57%	Class A	•	•	•	•
	6414AM __ Single Narrow	24 x 24 x 1/4"	52%	Class A	•	•	•	•
	6128AM __ Triple Narrow	24 x 24 x 1/4"	62%	Class A	•	•	•	•
	8203AM __ Fine Rectangular	24 x 24 x 1/4"	47%	Class A	•	•	•	•
Linear Weave								
Square Tegular	8195AM __ Fine Rectangular	24 x 24 x 1/4"	47%	Class A	•	•	•	•
								
Diamond Weave								
Square Lay-in	6417AM __ 1Diamond	24 x 24 x 1/4"	76%	Class A	•	•	•	•
	6418AM __ 2Diamond	24 x 24 x 1/4"	82%	Class A	•	•	•	•
Round Weave								
Square Lay-in	8201AM __ Round Rectangular	24 x 24 x 1/4"	75%	Class A	•	•	•	•
	8202AM __ Twin Circle	24 x 24 x 1/4"	41%	Class A	•	•	•	•

% Open Area	Infill Panel Item Number	NRC
21% Open Area 	Single Flat Narrow	5823 0.85
		1713BL 0.70
		2820BK 0.85
53% Open Area 	Twin Flat Narrow	5823 0.85
		1713BL 0.70
		2820BK 0.85
76% Open Area 	1 Cell	5823 0.85
		1713BL 0.75
		2820BK 0.85

NOTE: Patterns with similar % open area will achieve similar acoustic results.

ACOUSTICAL PANEL INSTALLATION



MetalWorks™ Mesh™ ceiling panel with Calla® 2820BK infill panel for high NRC performance

♦ When specifying or ordering, include the appropriate 2-letter color suffix with the item number (e.g., 6129AM S G).
NOTE: For acoustical infill panel information, see pgs. 156-157.







METALWORKS™ Mesh

Lay-in & Tegular

UP TO **25%** RECYCLED CONTENT
 For LEED contribution contact TechLine

LEED® energy management construction waste mgmt regional materials design for flexibility EPD recyclable/extended producer resp. bio-based materials recycled content sourcing of raw materials material ingredient reporting low emitting materials lighting quality acoustics

VISUAL SELECTION

Edge Profile	Item Number ♦ Description	Panel Dimensions W x L x H (Inches)
WELDED WIRE		
	6131AM __ 1Cell	24 x 24 x 1/4"
	6132AM __ 2Cell	24 x 24 x 1/4"
	6133AM __ 3Cell	24 x 24 x 1/4"
	8190AM __ 1Cell	24 x 24 x 1/4"
	8191AM __ 2Cell	24 x 24 x 1/4"
	8196AM __ Linear Channeled	24 x 24 x 1/4"
	8197AM __ Linear Channeled – Center Hole	24 x 24 x 1/4"
	EXPANDED METAL	
	6136AM __ Lattice	24 x 24 x 1/4" SWD 0.250", LWD 0.500"
	6137AM __ Scallops	24 x 24 x 1/4" SWD 0.295", LWD 0.394"
	6138AM __ Trellis	24 x 24 x 1/4" SWD 0.515", LWD 1.200"
	6139AM __ Cascades	24 x 24 x 1/4" SWD 0.950", LWD 2.000"
	8192AM __ Lattice	24 x 24 x 1/4"
	8193AM __ Scallops	24 x 24 x 1/4"
	8194AM __ Trellis	24 x 24 x 1/4"

♦ When specifying or ordering, include the appropriate 2-letter color suffix with the item number (e.g., 6129AM S G).
 SWD = Short way of design LWD = Long way of design
 NOTE: For acoustical infill panel information, see Pgs. 156-157.

PERFORMANCE

Dots represent high level of performance.

% Open Area	Fire Rating	Wash	Scrub	Impact	Soil
78%	Class A	•	•	•	•
88%	Class A	•	•	•	•
92%	Class A	•	•	•	•
78%	Class A	•	•	•	•
88%	Class A	•	•	•	•
50%	Class A	•	•	•	•
60%	Class A	•	•	•	•
73%	Class A	•	•	•	•
61%	Class A	•	•	•	•
70%	Class A	•	•	•	•
23%	Class A	•	•	•	•
73%	Class A	•	•	•	•
61%	Class A	•	•	•	•
70%	Class A	•	•	•	•

ACOUSTICAL INFORMATION

LOCATION DEPENDENT

% Open Area	Infill Panel Item Number	NRC
21% Open Area	Single Flat Narrow	5823 0.85
		1713BL 0.70
		2820BK 0.85
53% Open Area	Twin Flat Narrow	5823 0.85
		1713BL 0.70
		2820BK 0.85
76% Open Area	1 Cell	5823 0.85
		1713BL 0.75
		2820BK 0.85

NOTE: Patterns with similar 5 open area will achieve similar acoustic results.

SUSPENSION SYSTEMS



(See Pgs. 391-392 for Prelude® XL® components.)
 (See Pg. 383 for 360° Painted Grid components.)

PHYSICAL DATA

Material

All items, except Cascades panels, are cold-rolled steel. Cascades panels are made of aluminum.

Surface Finish

All panels are available in a range of standard and custom smooth, factory-applied powder-coated finishes. Most panels can also be plated for an Antique Nickel finish which will have a variable patina for an authentic aged visual. The anodized finishes (BA, NA) are available on Cascades panels only.

Fire Performance

ASTM E84 and CAN/ULC S102. Flame Spread Index 25 or less. Smoke Developed Index 50 or less.

All MetalWorks™ Mesh panels are non-combustible.

As with other architectural features located at the ceiling, Mesh panels may obstruct or skew the planned fire sprinkler water distribution pattern, or possibly delay or accelerate the activation of the sprinkler or fire detection systems by channeling the heat from a fire either toward or away from the device.

For panels that do not meet the criteria for open-suspension system ceilings, as defined by NFPA 13,

a 24" x 24" mineral fiber panel should be placed on the back of the Mesh panel when installing the ceiling, with the sprinkler installed below both panels.

Designers and installers are advised to consult a fire protection engineer, NFPA 13, and local codes for guidance where automatic fire detection and suppression systems are present.

Acoustics Considerations

NRC-tested using white panels. Painted panels may experience a slight reduction in NRC due to color painting processes.

Design Considerations

For more open MetalWorks Mesh items where the suspension system may be visible through the panels, consider using a 360° Painted Grid System coordinated with the panel color.

Item 8196 should not be field cut. Use item 8197, with 5" center hole, for sprinklers, lighting, and other mechanicals. Additionally, care should always be taken when cutting metal. Please see installation instructions for specific guidance on each type of mesh panel.

Installation Considerations

Hold-Down Clips may be required in some installations, see pgs. 156-157. The edges of MetalWorks™ Mesh

panels feature unique detailing. Use caution and wear appropriate hand and eye protection when installing or cutting these metal panels. Refer to Installation Instructions BPLA-297075 at armstrongceilings.com/metalworks for details and cutting recommendations.

Warranty

Details at armstrongceilings.com

Weight/Panel (Bulk Packed)

6128AM – 4.2 lbs	8192AM – 1.9 lbs
6129AM – 6 lbs	8193AM – 2.3 lbs
6131AM – 4 lbs	8194AM – 3.0 lbs
6132AM – 2.3 lbs	8196AM – 7.3 lbs
6133AM – 1.6 lbs	8197AM – 7.3 lbs
6410AM – 4.8 lbs	8198AM – 4.8 lbs
6412AM – 4.8 lbs	8199AM – 6.5 lbs
6136AM – 1.8 lbs	8200AM – 8.1 lbs
6137AM – 2.8 lbs	8195AM – 7.4 lbs
6138AM – 1.7 lbs	8203AM – 7.0 lbs
6139AM – 2.1 lbs	8201AM – 4.5 lbs
8190AM – 4.4 lbs	8202AM – 7.7 lbs
8191AM – 3.2 lbs	

Minimum Order Quantity

100 Square Feet



METALWORKS™