

METALWORKS™ Torsion Spring/ Torsion Spring Exterior

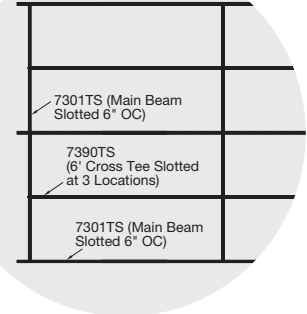
smooth texture

Now in
Optional
48" x 48"
Size

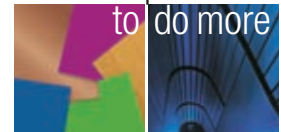
CAD/Revit® drawings at:
armstrongceilings.com/details



MetalWorks™ Torsion Spring panels in varied sizes in Silverlume with Prelude® XL® 15/16" suspension system



plus...
capabilities
to do more



armstrongceilings.com/capabilities
See more photos at:
armstrongceilings.com/photogallery

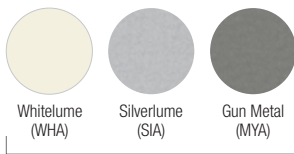
Large-size concealed panels offer a monolithic visual with 100% downward accessibility.

KEY SELECTION ATTRIBUTES

- Now available with PureWood™ real wood veneers in three standard finishes **new**
- MetalWorks Torsion Spring is part of the Sustain™ portfolio and meets the most stringent sustainability compliance standards today
- Choose from a variety of standard panel sizes that install with pre-slotted standard 15/16" suspension system
- 48 x 48" panels are available as a premium option
- Interior panels feature swing-down accessibility
- For exterior applications, choose from two standard panel sizes that install with 15/16" G90 suspension system
- Reflections™ laminate finishes provide superior wood-look visual with printed vinyl bonded to aluminum; visuals other than the ones shown are also available
- NRC values up to 0.90 with fiberglass infill panels (select perforation patterns)

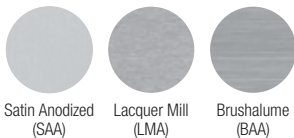
COLOR SELECTION Due to printing limitations, shade may vary from actual product.

MetalWorks – Interior and Exterior



Part of the Sustain™ portfolio, meeting sustainability compliance standards

MetalWorks – Interior Only



Custom Colors Available

Reflections Laminate Finishes – Interior and Exterior



Reflections Laminate Finishes – Interior Only

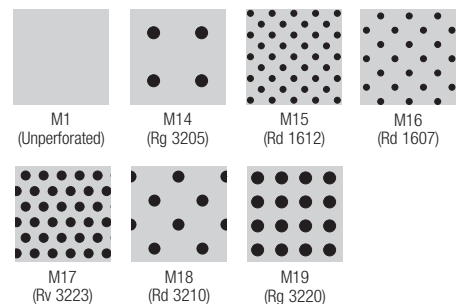


PureWood Veneer Finishes – Interior Only

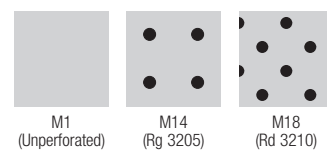


PERFORATION OPTIONS (1:2 scale shown)

Painted and Laminate Perforations



PureWood Perforation Options (1:2 scale shown)



Custom Perforations Available

METALWORKS™ Torsion Spring/ Torsion Spring Exterior

smooth texture

DeclareSM
Living Building
Challenge Compliant


SUSTAINSM
High Performance
Sustainable
Ceiling Systems

UP TO 90% RECYCLED CONTENT

Calculate LEED contribution at armstrongceilings.com/greengenie

LEED[®] categories: energy management, construction waste mgmt, regional materials, design for flexibility, EPD, recyclable/extended producer resp., bio-based materials, recycled content, sourcing of raw materials, material ingredient reporting, low emitting materials, lighting quality, acoustics

VISUAL SELECTION

Edge Profile	Item Number*	Dimensions (Inches) Custom Sizes Available
METALWORKS™ Torsion Spring Square with Acoustical Fleece		
Torsion Spring Square 15/16" 	7209_ _ _ _ _	24 x 24"
	7210_ _ _ _ _	24 x 48"
	7211_ _ _ _ _	24 x 72"
	7212_ _ _ _ _	24 x 96"
	7213_ _ _ _ _	30 x 30"
Exterior Panels		
	7225_ _ _ _ _	24 x 24"
	7226_ _ _ _ _	24 x 48"

NOTE: 48 x 48" panels are available as a premium option

- ◆ When specifying or ordering, include the appropriate perforation and color suffix with the item number (e.g., 7209 M 1 4 L M A).
- † Light reflectance is for unperforated Whitelume.
- ** Unperforated Whitelume light reflectance
- *** Perforated Whitelume light reflectance



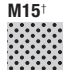
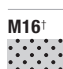



PERFORMANCE

Dots represent high level of performance.

Light Reflect	Springs per Panel
0.77	4
0.77	4
0.77	6
0.77	6
0.77	4
0.77** 0.61***	4
0.77** 0.61***	4

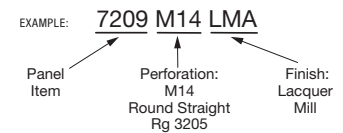
LOCATION DEPENDENT

ACOUSTICAL INFORMATION

Perforation	NRC with acoustical fleeces	NRC with 1" fiberglass infill panel**	
			NRC
M1 [†] 	Unperforated	-	-
M14 [†] 	Rg 3205	0.55	0.85
M15 [†] 	Rd 1612	0.70	0.90
M16 [†] 	Rd 1607	0.70	0.80
M17 [†] 	Rv 3223	0.70	0.90
M18 [†] 	Rd 3210	0.65	0.85
M19 [†] 	Rg 3220	0.75	0.90

** Maximum NRC achieved with acoustical infill (item 8200100 or 5823). For additional infill options, refer to the Acoustical Infill data page (CS-4172).

† Available for exterior applications



PHYSICAL DATA

Material

Aluminum – thickness 0.040"
Aluminum – thickness 0.050" (items 7225 and 7226 only)

Surface Finish

Reflections™ laminates: Vinyl-faced membrane
Painted finishes: Factory-applied polyester paint
Custom colors and finishes available.

Fire Performance

If a composite test report is needed, Class A test reports are available for aluminum Torsion Spring painted and metal finishes, along with Class B test reports for both PureWood veneer and Reflections laminate finishes.
Fire performance for other finishes will vary depending on the required finish.

Code Considerations

The International Mechanical Code requires that materials used in or forming part of an air plenum have a flame spread index of 25 or less and a smoke developed index of 50 or less on all surfaces of the material including those surfaces that may be exposed by cutting the material. Exception: The IBC states, "Materials having a thickness less than 0.036 inches (0.9mm) applied directly to the surface of walls or ceilings shall not be required to be tested."

Panels finished with PureWood™ veneers, Reflections™ laminates, and paint finishes typically have a thickness less than 0.036 inches (0.9mm). These finishes are applied directly to the Class A aluminum substrate.

Acoustical Options

Perforated panels are supplied with a black fiberglass fleecce to absorb sound.

Recycled Content

Minimum 25%. Up to 90% recycled content available.

Design Considerations

Anodized and Lacquer Mill finishes may vary in shade between production runs as well as over time. Sizes can be mixed and matched on non-perforated panels only.

30" x 30" panels have a directional finish that is perpendicular to the main beams; all other panel sizes have a directional finish that is parallel to the main beams.

MetalWorks™ steel and aluminum panels are made at different manufacturing facilities that use different paint systems. Because of this, similar colors, i.e., White and Whitelume, are not exact color matches. Please consider this when designing adjacent spaces with multiple MetalWorks products.

For PureWood finishes, variation among panels may occur due to the natural characteristics of the wood and grain.

Wind Uplift Performance

24" x 24" and 24" x 48" panels noted as exterior on this document tested for wind uplift Classes 30, 60, and 90. Specific installation instructions to meet these classes are available. For more information, visit armstrongceilings.com or contact TechLine customer support at 1 877 ARMSTRONG.

Design Support

Project management assistance is available by calling TechLine customer support at 1 877 ARMSTRONG.

Seismic Restraint

MetalWorks Torsion Spring panels have been engineered, tested, and approved for application in all seismic areas when installed per Armstrong Ceilings installation instructions.

Warranty

One (1) year limited warranty.
Details at armstrongceilings.com/warranty

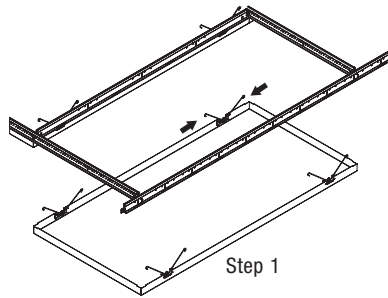
Weight

0.69 lbs/SF
0.86 lbs/SF (item 7226)

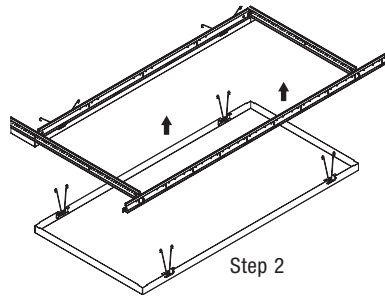
METALWORKS™ Torsion Spring/ Torsion Spring Exterior

smooth texture

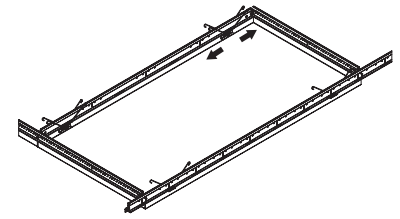
HOW TO INSTALL PANELS



Step 1

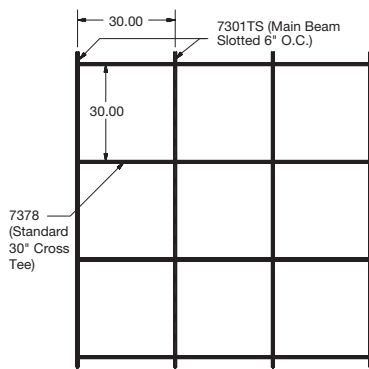
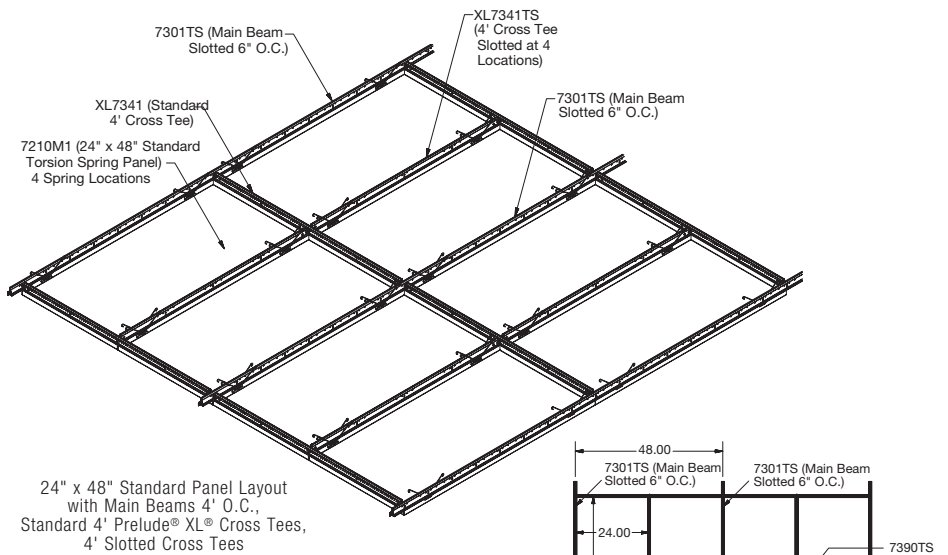


Step 2

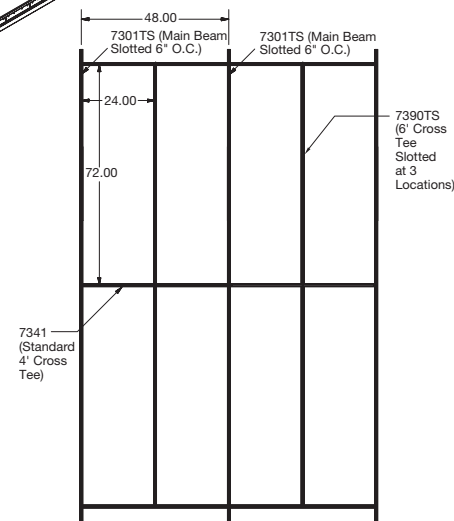


Step 3

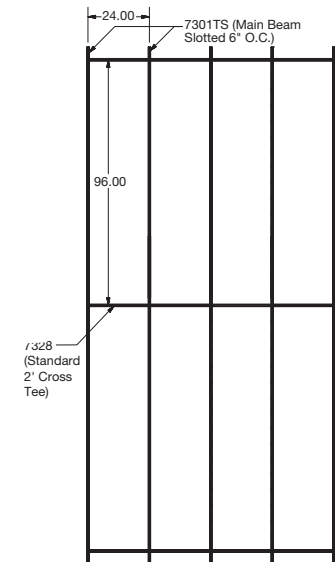
INTERIOR INSTALLATION DETAILS



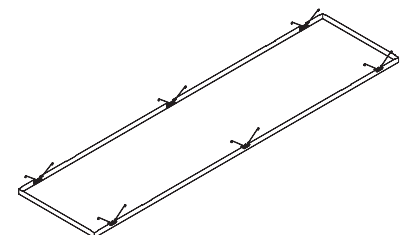
Suspension System Layout for 30" x 30" Panels



Suspension System Layout for 24" x 72" Panels



2x8 Grid Layout (Scale - 1:25)



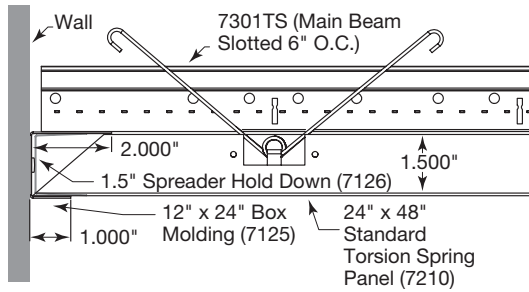
Suspension System Layout for 24" x 96" Panels

METALWORKS™ Torsion Spring/ Torsion Spring Exterior

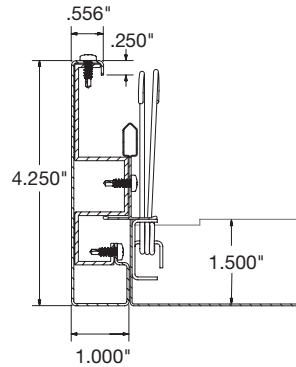
smooth texture

INTERIOR WALL PERIMETER DETAILS – For exterior details, consult the MetalWorks Exterior Torsion Spring installation instructions, BPLA-297922

Installation Detail – Wall Perimeter

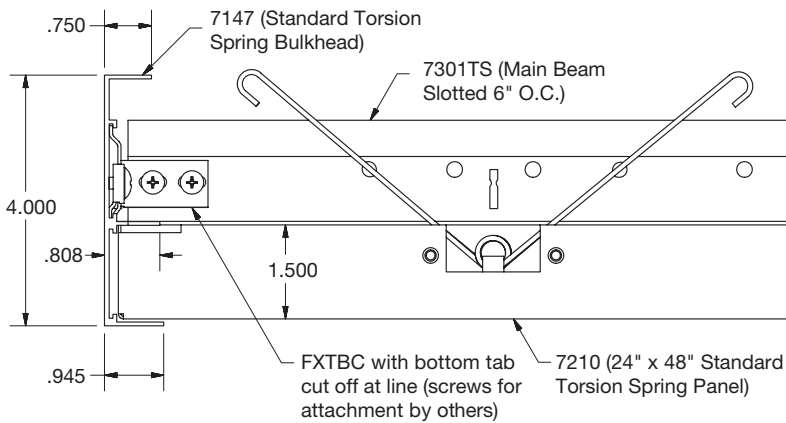


**Installation Detail – Perimeter Trim
(Formed Trim #7131)**

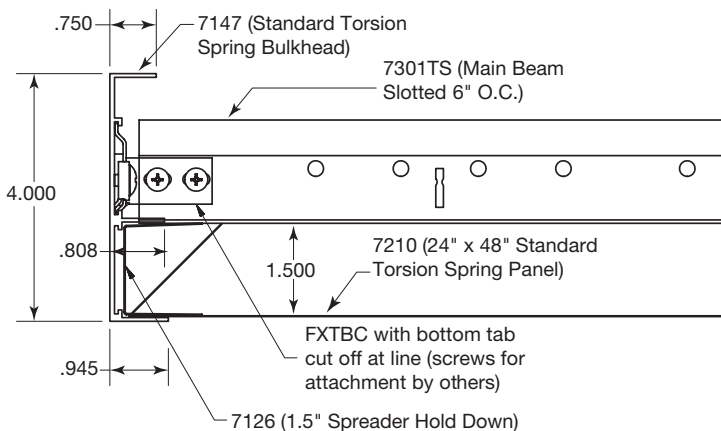


**Installation Detail – Perimeter Trim
(Extruded Trim #7147)**

Full Panels



Cut Panels



METALWORKS™ Torsion Spring/ Torsion Spring Exterior

smooth texture

ACCESSORIES

Item Number	Description	Dimensions (Inches) Nominal W x L x H	Color	Pieces/ Carton
7125_ _ _ ♦	Box Molding (for Laminates and PureWood™, Black is recommended)	2 x 96 x 1.5"	WHA, SIA, MYA, SAA, LMA, BAA, BL	10
7147_ _ _ ♦	Torsion Spring Perimeter Trim (Extruded) (for Laminates and PureWood, Black is recommended)	1 x 120 x 4"	WH, SG, MY, BL	6
7131_ _ _ ♦	Torsion Spring Perimeter Trim (Formed)	1 x 96 x 4.25"	LMA, BAA, SAA	6
7126	Spreader Hold Down	1 x 10-5/8 x 1-1/2"	N/A	10
5823	BioAcoustic™ Infill Panel	24 x 24 x 5/8"	Black	12
8200100	1" Fiberglass Infill Bag	24 x 24 x 1"	Black (Gloss)	12
7129	Torsion Spring Hook Access Tool	N/A	N/A	1
7130	Torsion Spring Suction Access Tool	N/A	N/A	1

SUSPENSION SYSTEMS

Item Number	Description	Dimensions (Inches)
15/16" Prelude® XL® Suspension System – Some items slotted for Torsion Spring. See below.		
7301TS	Prelude XL 12' HD Main Beam – slotted for Torsion Spring	144 x 15/16 x 1-11/16"
XL7341TS	Prelude XL 4' Cross Tee – slotted for Torsion Spring	48 x 15/16 x 1-11/16"
XL7390TS	Prelude XL 6' Cross Tee – slotted for Torsion Spring	72 x 15/16 x 1-11/16"
XL7378	Prelude XL 30" Cross Tee	30 x 15/16 x 1-11/16"
XL8320	Prelude XL 2' Cross Tee	24 x 15/16 x 1-11/16"
XL7341	Prelude XL 4' Cross Tee	48 x 15/16 x 1-11/16"

Exterior Suspension System

15/16" Prelude XL – Some items slotted for Torsion Spring. See below.		
7301G90ATS	Prelude XL 12' HD Exterior Main Beam – slotted for Torsion Spring	144 x 15/16 x 1-11/16"
XL7341G90ATS	Prelude XL 4' Exterior Cross Tee – slotted for Torsion Spring	48 x 15/16 x 1-11/16"
XL7321G90A	Prelude XL 2' Exterior Cross Tee	24 x 15/16 x 1-11/16"

