

VIDASHIELD OSPHD Compliant Hard Ceiling Mount

Assembly and Installation Instructions

1. GENERAL

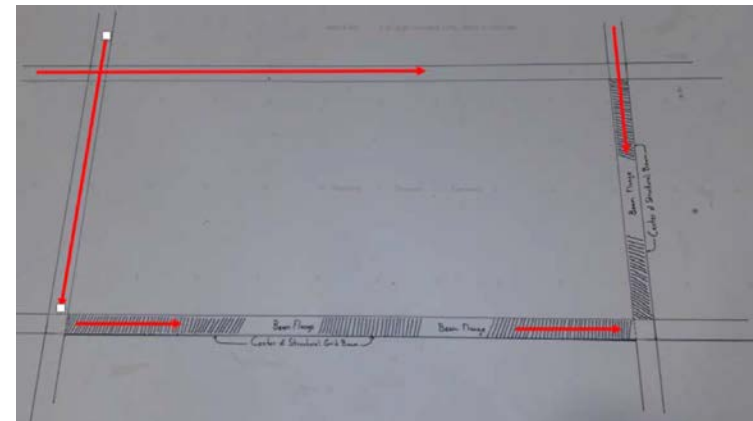
1.1 Step 1

Insure the ceiling is OSHPD compliant. Consult www.oshpd.ca.gov for current OSHPD ceiling specifications.

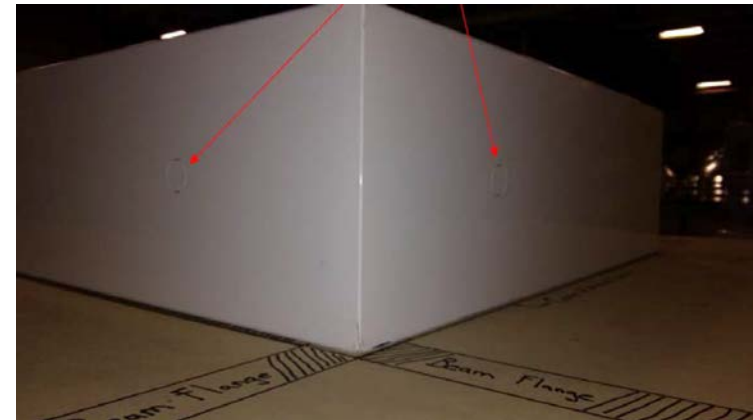
1.2 Step 2

Locate the structural beams in the ceiling grid and draw reference lines on the drywall to serve as aids in alignment. The hard ceiling mount must be installed in a position that insures the mounting screws engage the ceiling structure on all four sides (*Fig 1*).

When selecting a location for the mount, remember to consider where your input power cables reside. Power cables can be routed through the open area in the top of the hard ceiling mount. The VidaShield Hard Ceiling Mount also has “knock out” holes near each corner to accommodate installations that require power cables to be installed from the side of the fixture (*Fig 2*).



(Fig 1)



(Fig 2)

1.3 Step 3

With the mounting location determined, install the temporary retention brackets in the ceiling approximately $\frac{1}{2}$ inch from the edge of where the hard ceiling mounting flange will be located. The retention brackets should be held in place by "Wall Dogs" or other equivalent fasteners appropriate for bearing a 5lb load in drywall. **DO NOT** fasten the brackets completely to the ceiling. Leave approximately a $\frac{1}{8}$ in" gap between the bracket and the ceiling (*Fig 3*).

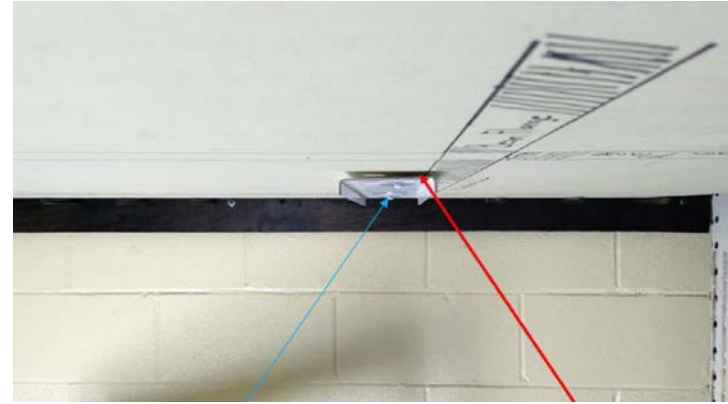
1.4 Step 4

Slide the brackets towards one another until the screw stops against the back of the slot in the bracket (*Fig 4*).

Both temporary mounting brackets in place, slid to the rear most position, and ready for hard ceiling mount installation.

1.5 Step 5

Lift the hard ceiling mount in place and slide the retention brackets over the mount's flanges so it will hang from the temporary retention brackets (*Fig 5*).



(Fig 3) Temporary Retaining Bracket installed
Approx. $\frac{1}{8}$ " gap



(Fig 4)



(Fig 5)

1.6 Step 6

With the fixture suspended by the retention brackets, make the necessary positioning adjustments and tighten the brackets against the ceiling so the mount is held firmly in the correct position.

Be careful not to overtighten the fasteners and strip them out of the drywall. The brackets only need to be tightened enough to temporarily hold the mount in position (*Fig 6*).

1.7 Step 7

With the mount in position drive the #6 self-drilling fasteners through the holes in the mount flange, through the ceiling material, and through the ceiling grid structural members. Pay close attention to insure the screws fully penetrate the ceiling grid structural members and tighten properly against the mount flange. (Cutaway view provided for illustration, the ceiling will normally be solid as shown in the previous pictures) (*Fig 7*).

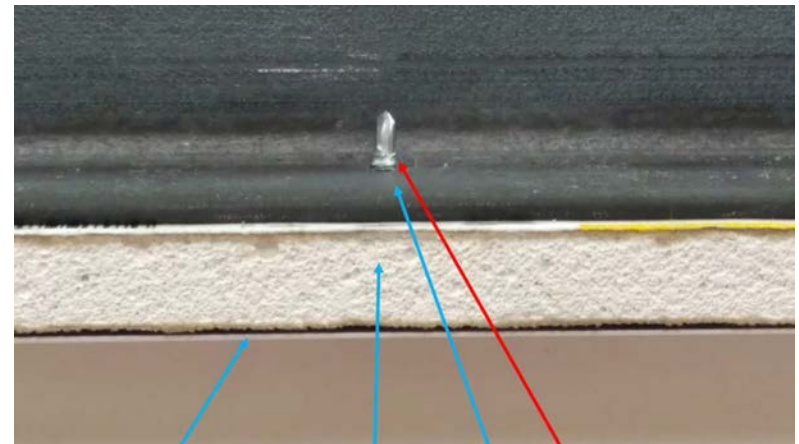
When using self-drilling screws, make sure the threaded portion of the screw is long enough to traverse all ceiling material and completely pass through the structural ceiling member.

Take care not to strip out the fastener in the structural ceiling members. (Structural ceiling grids are usually made from lightweight aluminum and can be stripped if close attention is not paid during installation. If you do strip even a single screw hole, the fixture must be moved slightly to a new position that allows all fasteners to be re-installed so there are no stripped screw holes. Please consult the ceiling grid manufacturer's guidelines regarding the safe minimum and maximum whole spacing.

IMPORTANT NOTICE: When installing the VidaShield Hard Ceiling Mount, all screws must be utilized and all screws must pass through the structural ceiling grid. These two requirements must be completely achieved or the installation will not meet OSHPD compliance requirements and could result in damage or injury.



(Fig 6)



(Fig 7)

Hard Ceiling Mount,
Flange Drywall
Structural Ceiling Beam

1.8 Step 8

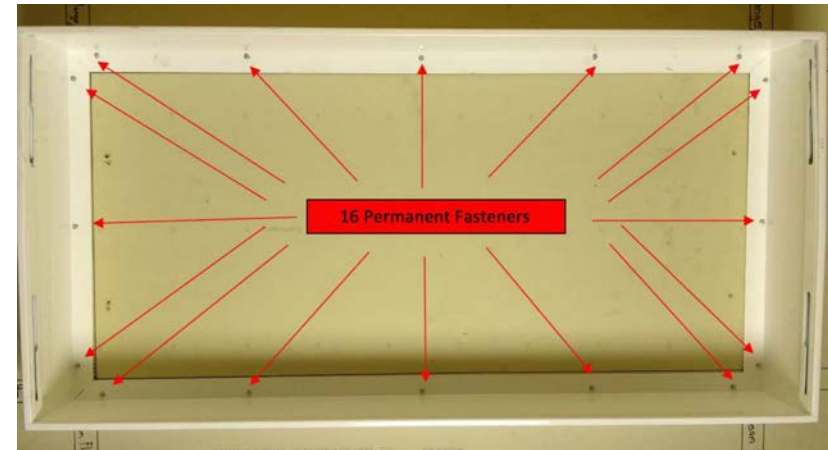
After all fasteners have been installed on both long (4ft.) sides of the mount, remove the temporary mounting brackets. Install the remaining fasteners on each end of the mount (*Fig 8*).

1.9 Step 9

When all screws are installed, perform a final inspection to insure all fasteners are secured against the face of the mount flange. Installation of the hard ceiling mount is now complete and the VidaShield unit can be installed into the mount as outlined in the overview.

1.10 Step 10

OSPHD Compliant Hard Ceiling Mount Installation can be completed.



(Fig 8)

MORE INFORMATION

For more information, or for an Armstrong Ceilings representative, call 1 877 276-7876.
For complete technical information, detail drawings, CAD design assistance, installation information, and many other technical services, call TechLine customer support at 1 877 276-7876 or FAX 1 800 572-TECH.

All trademarks used herein are the property of AWI Licensing LLC and/or its affiliates.
© 2021 AWI Licensing Company Printed in the United States of America

BPLA-293032-521

Armstrong[®]
CEILING & WALL SOLUTIONS