



CAD/Revit® drawings at:  
[armstrongceilings.com/cadrevit](http://armstrongceilings.com/cadrevit)

WoodWorks Tegalur MicroPerforated panels in Constants™ Redux Wood Wheat and Sincerus™ Linear Air Purification System

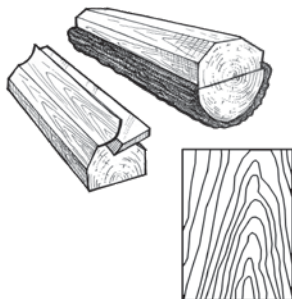
MicroPerforated panels combine the beauty of natural wood with "barely there" perforations for Total Acoustics® performance.

#### KEY SELECTION ATTRIBUTES

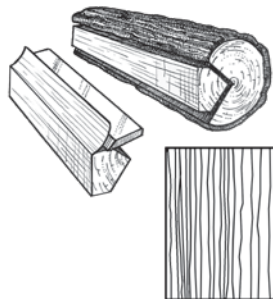
- Get total noise control and design flexibility with Total Acoustics® ceiling panels: NRC + CAC = Total Acoustics
- Standard veneers feature various species and cuts for beautiful wood visuals
- ASTM E84 Class A Fire Performance
- The natural warmth of wood can contribute to biophilic designs and building certification standards like the WELL™ v2 "Nature and Place" feature
- Create upturns for continuous visuals and clouds with WoodWorks® trim
- Shorter lead times and lower cost than custom millwork
- USDA Biobased Content: 100%
- FSC® certified wood available as a premium quoted option (FSC® C007626)
- Made in the U.S.A. of domestic and global content
- Build America, Buy America (BABA) Act compliant

#### VENEER CUTS

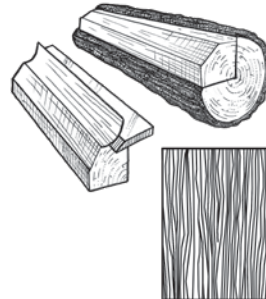
Different cuts of a log will yield different graining visuals. Choose your veneer to achieve your desired look.



**Plain Sliced**  
Produces the well-known cathedral or loop-grain effect.



**Quarter Sliced**  
Produces a striped, often straight-grain effect.



**Rift Sliced**  
Produces a tight, linear grain along the entire length of the veneer.

## FINISH RANGES

The carefully curated species and veneer cuts offer a beautiful natural variation. The images here reflect the visual range that is likely within our product. Darkest to lightest tones may occur within an installation due to the character of wood.



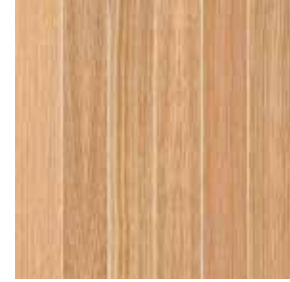
Plain Slice White Maple (NWM)



Plain Slice White Ash (NWA)



Vertical Grain Fir (NVF)



Rift White Oak (NRO)



Plain Slice White Oak (NOK)



Plain Slice Cherry (NPC)



Quartered Mahogany (NGM)



Quartered Sapele (NQS)

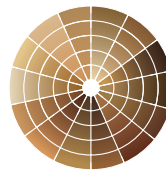


Quartered Walnut (NGW)



Plain Slice Walnut (NWN)

## CUSTOM FINISHES



Custom Wood  
Species and Finishes  
Available

## LEGACY VENEERS

Constants™  
Vertical Grain



Walnut (CWA)



Redux Wood Wheat (CRW)

Due to printing limitations, shade may vary from actual product.

**WOODWORKS® Tegular**  
MicroPerforated Ceiling Panels

RECYCLED  
CONTENT

LEED V5

UP TO  
**80%**

USDA  
CERTIFIED  
BIOBASED  
PRODUCT  
PRODUCT 100%

COMMON MATERIALS FRAMEWORK

Human Health

Climate Health

Ecosystem Health

Circular Economy

Acoustics

EPD



EPD

FSC®

✓

✓

VISUAL SELECTION

Edge Profile	Item No. ◆	Dimensions Nominal W × L × H (Inches)
WOODWORKS® Tegular MicroPerforated Panels	5404F01P2_ _ _	24 × 24 × 3/4"
9/16" Square Tegular	6484F01P2_ _ _	12 × 48 × 3/4"
	6485F01P2_ _ _	12 × 72 × 3/4"
	6486F01P2_ _ _	24 × 48 × 3/4"
	6487F01P2_ _ _	24 × 72 × 3/4"
FSC® certified* WOODWORKS Tegular MicroPerforated Panels	5404F02P2_ _ _	24 × 24 × 3/4"
	6484F02P2_ _ _	12 × 48 × 3/4"
	6485F02P2_ _ _	12 × 72 × 3/4"
	6486F02P2_ _ _	24 × 48 × 3/4"
	6487F02P2_ _ _	24 × 72 × 3/4"

◆ When specifying or ordering, include the appropriate 3-letter color suffixes.


\* FSC-certified wood is a premium option available through ASQuote@armstrongceilings.com

NOTE: Items 6485 and 6487 (12" × 72" and 24" × 72" series) include suspension system stabilizer clips (included in carton).

PERFORMANCE

Fire Rating
Class A
Class A
Class A
Class A
Class A
Class A
Class A
Class A
Class A

ACOUSTICAL INFORMATION

Perforation	Infill Panel Item No.	Description	NRC	CAC	Total Acoustics <sup>1</sup>
		Panel Only	0.70	27	-
	8200T10	Fiberglass	0.85	34	-
	1713BL	School Zone® Fine Fissured™	0.80	47	BEST
	2820BK	Calla®	0.80	46	BEST
	5823	BioAcoustic™	0.80	31	-
	5479	BioAcoustic	0.80	-	-
	1318	Backstage Noir®	0.80	41	BEST

Total Acoustics® ceiling panels have an ideal combination of sound absorption and sound blocking in one product.

**GOOD** (NRC 0.60-0.65; CAC 35+)

**BETTER** (NRC 0.70-0.75; CAC 35+)

**BEST** (NRC 0.80+; CAC 35+)

EXAMPLE: **5404 F02 P2 NWM**

Panel Dimension/Type: 24" x 24"  
Substrate: FSC-certified  
Perforation: P2 MicroPerforated  
Finish: Plain Slice White Maple

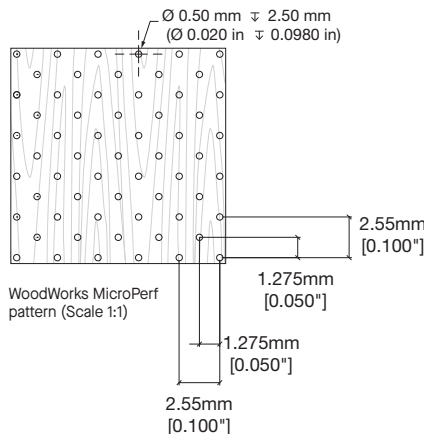
DETAILS



WoodWorks MicroPerf panel  
viewed at a 1-foot distance



WoodWorks MicroPerf panel  
viewed at a 10-foot distance



WoodWorks MicroPerf  
pattern (Scale 1:1)

TechLine 877 276-7876

armstrongceilings.com/woodworks

**Armstrong®**  
World Industries

WOODWORKS® – Standard

NRC  
+ CAC

DEF

Fire

Paint

## ACCESSORIES

	Item No. ◆	Description	Dimensions Nominal W × L × H (Inches)	Color	PCS/ CTN
Suspension Systems	<b>7501</b>	Suprafine® XL® 12' Heavy Duty Main Beam	9/16 × 144 × 1-11/16"	White	20
	<b>XL7590</b>	Suprafine 6' Cross Tee	9/16 × 72 × 1-11/16"	White	20
	<b>XL7549</b>	Suprafine 4' Cross Tee	9/16 × 48 × 1-11/16"	White	60
	<b>XL7520</b>	Suprafine 2' Cross Tee	9/16 × 24 × 1-11/16"	White	60
	<b>7891</b>	12-Gauge Hanger Wire	144" Length	N/A	N/A
Accessories	<b>7870</b>	Spring Border Clip	N/A	Mill Finish	1000
	<b>7425</b>	24" Stabilizer Bar	24" Length	Mill Finish	100
	<b>7445</b>	48" Stabilizer Bar	48" Length	Mill Finish	100
Infill Panels	<b>1713BL</b>	Fine Fissured™ Lay-in Panel	24 × 24 × 3/4"	Tech Black	14
	<b>2820BK</b>	Calla® Lay-in Panel	24 × 24 × 1"	Black	10
	<b>5479</b>	BioAcoustic™ Infill Panel	24 × 24 × 5/8"	Beige Matte	12
	<b>1318</b>	Backstage Noir® Square Lay-in Panel	24 × 24 × 3/4"	Black	12
	<b>5823</b>	BioAcoustic Infill Panel	24 × 24 × 5/8"	Black Matte	12
	<b>8200T10</b>	Fiberglass Infill Panel	24 × 24 × 1"	Black Gloss	12
Perimeter Trim	<b>7804</b>	Angle Molding (recommended with wood trims)	7/8 × 144 × 9/16"	White	30
	<b>7874</b>	10' Shadow Molding for WoodWorks Tegular	9/16 × 120 × 15/16"	White, Charcoal Black	30
	<b>7878</b>	10' Seismic Shadow Molding for WoodWorks Tegular	15/16 × 120 × 15/16"	White	30
	<b>5415F01W1H4 _ _ _</b>	4" WoodWorks® Vector®/Tegular Trim with 4 clips (Item 5925)	4 × 96 × 3/4"	All Veneers	4
	<b>5415F01W1H6 _ _ _</b>	6" WoodWorks Vector/Tegular Trim with 4 clips (Item 5925)	6 × 96 × 3/4"	All Veneers	4
	<b>5925</b>	WoodWorks Trim Clips	N/A	N/A	1 (25 PC minimum order quantity)
	<b>7239</b>	Adjustable Trim Clip	N/A	Mill Finish	50
	<b>7800</b>	7/8" Angle Molding	7/8 × 144 × 7/8"	Black	30
	<b>AX _ VESTR _ _ _</b>	Axiom® Vector Straight Trim	N/A	Silver Grey, Black, Gun Metal	10 LF
	<b>AX _ VECUR _ _ _</b>	Axiom Vector Curved Trim	N/A	Silver Grey, Black, Gun Metal	10 LF
FSC® certified Premium Trim*	<b>5415F02W1H4 _ _ _</b>	4" WoodWorks Vector/Tegular Trim with 4 clips (Item 5925)	4 × 96 × 3/4"	All Veneers	4
	<b>5415F02W1H6 _ _ _</b>	6" WoodWorks Vector/Tegular Trim with 4 clips (Item 5925)	6 × 96 × 3/4"	All Veneers	4

◆ When specifying or ordering, include the 3-digit color suffix that coordinates with your WoodWorks ceiling: (e.g. 5415F01W1H4 **N M P**)  
Black grid is recommended for WoodWorks installations. Please make sure your order reflects the correct colors.  
Item numbers shown are a standard white finish.

\* FSC-certified wood is a premium option available through ASQuote@armstrongceilings.com.

## SUSPENSION SYSTEMS (Heavy-duty)

9/16"  
Tegular



Silhouette® HD

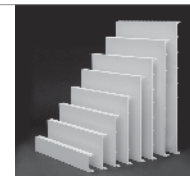


Suprafine® HD



Interlude® XL® HRC HD

Suprafine suspension system is available in many standard colors. All other suspension systems are available in standard White only. Other colors available as special order.



Axiom Trim also available in multiple colors and profile sizes. For details, visit [armstrongceilings.com/axiom](http://armstrongceilings.com/axiom)

## PHYSICAL DATA

### Material

Fire-rated particle board (FRPB) with real wood veneers.  
Vertical Grain Fir (NVF) is FRPB with a reconstituted veneer.

### Surface Finish

Clear or tinted matte coating

### Fire Performance

Class A: ASTM E84 surface burning characteristics.  
Flame Spread Index 25 or less. Smoke Developed Index 50 or less.

CAN/ULC S102 surface burning characteristics. Flame Spread Rating 25 or less. Smoke Developed Classification 50 or less.

### Acoustical Performance

CAC testing conducted using Suprafine® XL® suspension system.

### Primary (Embodied) Energy

See all LCA information on our EPDs.

### Application Considerations

Variation among panels may occur due to the natural characteristics of the wood and grain.

It is very important that WoodWorks panels are climatized prior to installation. Relative humidity between 25% and 55%, and temperatures between 50°F and 86°F, must be maintained throughout the life of the product.

### Design Considerations

When installed, microperforations are nearly invisible. However, a difference in sheen is apparent when they are installed next to non-microperforated panels.

Panels of different sizes should not be installed together in the same installation.

All microperforated panels are standard with acoustical fleece attached. Panels without fleece must be specified and quoted through ASQuote.

### Specification Consideration

Attention: For FSC-certified wood products to maintain their CoC certification, products must be sold to a CoC-certified distributor or directly to the installing contractor. Failure to do so breaks the CoC.

### Installation Considerations

24" × 72" panels have aluminum splines on the short ends. Be aware the splines will need cut through when cutting the panels.

### Seismic Restraint

WoodWorks Tegular ceiling panels have been engineered, tested, and approved for application in all seismic areas when installed per Armstrong Ceilings installation instructions.

### Cleaning and Disinfecting

Cleaning and CDC-approved disinfecting options available on [armstrongceilings.com/cleaning](http://armstrongceilings.com/cleaning)

### Warranty

Details at [armstrongceilings.com/warranty](http://armstrongceilings.com/warranty)

### Weight; Square Feet

24" × 24" – 1.63 LBS/SF

12" × 48" – 1.76 LBS/SF

12" × 72" – 1.73 LBS/SF

24" × 48" – 1.58 LBS/SF

24" × 72" – 1.54 LBS/SF