

# WOODWORKS® Linear

## Veneered Open

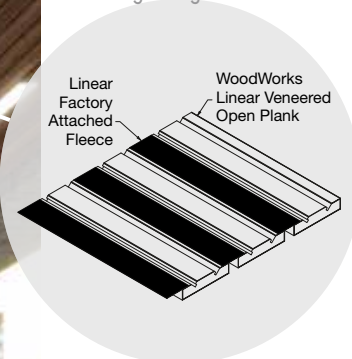


**FAST134**  
Select Items Ship Fast  
armstrongceilings.com/fast134

CAD/Revit® drawings at:  
armstrongceilings.com/cadrevit



WoodWorks® Linear Veneered Open 3-3/4" planks in Plain Slice Walnut (NWN)



Standard, easy-to-install wood veneer planks offer a variety of installation options.

### KEY SELECTION ATTRIBUTES



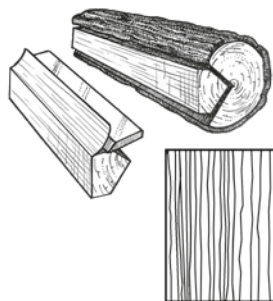
- Standard veneers feature various species and cuts for beautiful wood visuals
- Standard wood planks in two widths; nominal 4-1/2" and 6" O.C. plank modules with 3/4" reveal
- Standard factory-applied acoustic fleece
- The natural warmth of wood can contribute to biophilic designs and building certification standards like the WELL™ v2 "Nature and Place" feature
- Installation options including: ceiling, wall (horizontal only), ceiling-to-wall at 90° transition, or ceiling-to-wall with a faceted curved transition
- Select products included in the FAST134 program – ready to ship in 4 weeks or less
- Complete standard system from one manufacturer, including suspension system, panels, and trim options
- USDA Biobased content: 100%
- FSC® certified wood available as a premium quoted option (FSC® C007626)
- CleanAssure™ family of products – includes disinfectable panels, suspension systems, and trim
- Made in the U.S.A. of domestic and global content
- Build America, Buy America (BABA) Act compliant

### VENEER CUTS

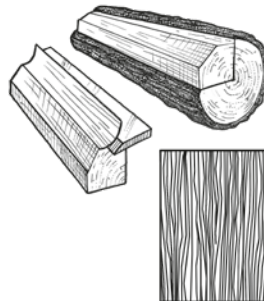
Different cuts of a log will yield different graining visuals. Choose your veneer to achieve your desired look.



**Plain Sliced**  
Produces the well known cathedral or loop-grain effect.



**Quarter Sliced**  
Produces a striped, often straight-grain effect.



**Rift Sliced**  
Produces a tight, linear grain along the entire length of the veneer.

# WOODWORKS® Linear

## Veneered Open

USDA  
CERTIFIED  
BIOBASED  
PRODUCT  
PRODUCT 100%

LEED®  
WELL | LBC

80% RECYCLED  
CONTENT

For LEED contribution contact TechLine

energy management	construction waste mgmt	regional materials	design for flexibility	EPD	recyclable/extended producer resp.	biobased materials	FSC® (for wood)	recycled content	sourcing of raw materials	material ingredient reporting	low emitting materials	lighting quality	acoustics
LOCATION DEPENDENT				PREMIUM OPTION				WITH INFILL PANEL					

### FINISH RANGES

The carefully curated species and veneer cuts offer a beautiful natural variation. The images here reflect the visual range that is likely within our product. Darkest to lightest tones may occur within an installation due to the character of wood.



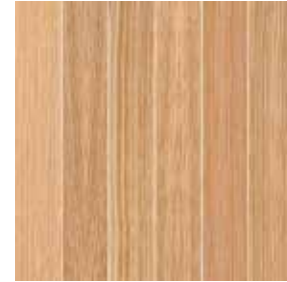
Plain Slice White Maple (NWM)



Plain Slice White Ash (NWA)



Vertical Grain Fir (NVF)



Rift White Oak (NRO)



Plain Slice White Oak (NOK)



Plain Slice Cherry (NPC)



Quartered Mahogany (NGM)



Quartered Sapele (NGS)



Quartered Walnut (NGW)



Plain Slice Walnut (NWN)

### CUSTOM FINISHES



Custom Wood  
Species and Finishes  
Available

### LEGACY VENEERS

Natural Variations™  
Plain Slice



Maple (NMP)



Light Cherry (NLC)

Constants™  
Vertical Grain



Walnut (CWA)



Redux Wood Wheat (CRW)

Due to printing limitations, shade may vary from actual product.



# WOODWORKS® Linear

## Veneered Open

USDA  
CERTIFIED  
BIOBASED  
PRODUCT 100%

LEED®  
WELL™ LBC

80% RECYCLED  
CONTENT

For LEED contribution contact TechLine

energy management	construction waste mgmt	regional materials	design for flexibility	EPD	recyclables/extended producer resp.	biobased materials	FSC® (for wood)	recycled content	sourcing of raw materials	material ingredient reporting	low emitting materials	lighting quality	acoustics
▲	▲	▲	▲	▲	▲	▲	▲	▲	▲	▲	▲	▲	▲
LOCATION DEPENDENT				PREMIUM OPTION				WITH INFILL PANEL					

### VISUAL SELECTION

Item No. ◆	Description	Dimensions W x L x H (Inches)	LBS/ SF
WoodWorks® Linear Veneered Open			
6440F01W1_ _ _	4-1/2" O.C. Plank	3-3/4 x 96 x 3/4" with 3/4" reveal	2.75
6460F01W1_ _ _	6" O.C. Plank	5-1/4 x 96 x 3/4" with 3/4" reveal	2.75
WoodWorks Linear Veneered Open FSC® certified*			
6440F02W1_ _ _	4-1/2" O.C. Plank	3-3/4 x 96 x 3/4" with 3/4" reveal	2.75
6460F02W1_ _ _	6" O.C. Plank	5-1/4 x 96 x 3/4" with 3/4" reveal	2.75

**FAST**  
4 WEEKS  
or Less

FAST134 program items ready to ship from manufacturer in 4 weeks or less.  
Up-to-date lead times and product options (sizes and colors) at [armstrongceilings.com/fast134](http://armstrongceilings.com/fast134)



◆ When specifying or ordering, include the appropriate 3-letter color suffix (e.g. 6440F01W1 **N M P**)  
\* FSC-certified wood is a premium option available through [ASQuote@armstrongceilings.com](mailto:ASQuote@armstrongceilings.com)

### PERFORMANCE

Dots represent high level of performance.

CleanAssure™ Disinfectable Panels		
Fog	Spray	Wipe
•	•	•

### ACOUSTICAL

Infill Panel Item No.	NRC	CAC
3-3/4" Module		
8200T10	0.60	-
1713BL	0.45	37*
2820BK	0.55	36*
5823	0.60	23
5479	0.60	23
1318	0.55	32
5-1/4" Module		
8200T10	0.45	-
1713BL	0.35	38*
2820BK	0.45	38*
5823	0.50	26
5479	0.50	26
1318	0.40	34

### ACCESSORIES

	Item No. ◆	Description	Dimensions Nominal W x L x H (inches)	Color	PCS/CTN
Suspension Systems	5370	12" HD Linear Carriers (concealed) with integral clips (factory-applied) for nominal 4-1/2" modules	15/16 x 144 x 1-11/16"	Black	10 (Approx. 240 SF/CTN installed with planks)
	5371	12" HD Linear Carriers (concealed) with integral clips (factory-applied) for nominal 6" modules	15/16 x 144 x 1-11/16"	Black	10 (Approx. 240 SF/CTN installed with planks)
	XL7328BL	Prelude® XL® 2" Cross Tee (for discontinuous / cloud applications)	15/16 x 24 x 1-3/8"	Black	60
	7805	1-1/2" Angle Molding	1-1/2 x 120 x 1-1/2"	White or Black	30
	7823	Shadow Molding (Seismic)	7/8 x 144 x 7/8"	White	30
Accessories	7891	12-Gauge Hanger Wire	144" Length	Mill Finish	140
	7100	Heavy-duty Wall Anchor (Seismic)	1-1/4 x 3 x 1"	Mill Finish	50
	BERC2	Beam End Retaining Clip	N/A	Mill Finish	200
	5373	WoodWorks Linear Veneered Open Grid Tee Snap-in Clip	N/A	N/A	100
	7425	Stabilizer Bar	24" Length	Mill Finish	100
	5843	Linear Wood Panel Splice	N/A	N/A	100
	RC2BL	Radius Clip for faceted grid applications (Black)	N/A	N/A	205 PCS/bucket
	6459BL	Rigid Attachment Clip (Black)	1-1/2 x 4-1/2 x 1-3/4"	N/A	25
	5823	BioAcoustic™ Infill Panel	24 x 24 x 5/8"	Black Matte	12
Acoustical Infill Panels	1713BL	School Zone® Fine Fissured™ Square Lay-in Panel	24 x 24 x 3/4"	White or Black	12
	1318	Backstage Noir® Square Lay-in Panel	24 x 24 x 3/4"	Black	12
	8200T10	Fiberglass Infill Panel	24 x 24 x 1"	Black Gloss	12
	2820BK	Calla® Square Lay-in Panel	24 x 24 x 7/8"	Black	10
Perimeter Trim	6481F01W1H_ _ _	4", 6", 8" Veneered Trim with 4 Clips - Item 5925 (With Faux Wood Edgebanding on Long Edges)	96" x 3/4"	All Veneers	N/A
	5925	Replacement Trim Clips	N/A	Mill Finish	25
	7239	Adjustable Trim Clip	N/A	Mill Finish	50
	AXSJ	Axiom® Slip Joint	2 x 120 x 2-1/4"	N/A	10 LF
	AX_VESTR_ _ _	Axiom Vector Straight Trim - Recommend in Black 6" and up	N/A	Silver Grey, Black, Gun Metal	10 LF
	AX_VECUR_ _ _	Axiom Vector Curved Trim - Recommend in Black 6" and up	N/A	Silver Grey, Black, Gun Metal	10 LF
	6408_ _ _	WoodWorks Edgebanding Coordinating Faux Wood	3/4" x 300"	All Veneers	25 LF

When ordering suspension system materials, please note that this product requires Prelude® XL® HD (Heavy-duty) 15/16" main beams and 2" cross tees that are full height (1-11/16"). Both suspension system components should be specified in Tech Black (BL).

◆ When specifying or ordering, include the height (4, 6, or 8) and 3-letter veneer suffix that coordinates with your WoodWorks ceiling (e.g. 6481F01W1H **4 N W M**).  
NOTE: Refer to installation instructions at [armstrongceilings.com/installation](http://armstrongceilings.com/installation) for a better understanding of suspension system requirements.

