



WOODWORKS® Grille – Forté

Veneered Wall Panels with Notched Backers



CAD/Revit® drawings at:
armstrongceilings.com/cadrevit

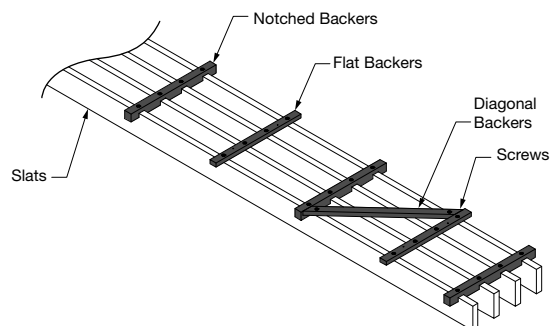
WoodWorks Grille – Forté veneered panels 3/4" W x 2-1/4" H with 4 slats in 4', 6' and 8' lengths in Rift White Oak (NRO)

Ten standard wood veneers offer unparalleled natural beauty through varying species, graining and color.

KEY SELECTION ATTRIBUTES

- 2 standard panel configurations in 4', 6', and 8' lengths minimize the need for customization, field cutting, and waste
- 10 standard veneers feature various species and cuts for beautiful wood visuals
- Enhanced structural design incorporates notched and diagonal backers to reinforce slat alignment, minimizing the naturally occurring twist of wood, improving handleability during install, and reducing call-backs
- Coordinating veneered trims in 4", 6", and 8" depths
- ASTM E84 Class A fire performance
- Install in the ceiling, on the wall, or create ceiling-to-wall transitions
- Pre-drilled backer holes eliminate splitting for long-term durability
- Centered backers allow for a non-directional install, providing flexibility in install layout and clean accessibility
- CleanAssure™ family of products – includes disinfectable panels, suspension systems, and trim
- Premium options include FSC® Certified options, fleece backer, and flexible backers for wall-to-ceiling transitions
- Custom options include unique panel configurations and lengths and additional species. Contact ASQuote@armstrongceilings.com
- Made in the U.S.A. of domestic and global content
- Build America, Buy America (BABA) Act compliant

VENEER PANEL BACKER DETAIL





WOODWORKS® Grille – Forté

Veneered Wall Panels with Notched Backers

RECYCLED
CONTENT

LEED V5

UP TO
60%

COMMON MATERIALS FRAMEWORK

Human Health

Climate Health

Ecosystem Health

EPD

EPD

Circular Economy



OCCUPANT EXPERIENCE

Acoustics



FINISH RANGES

The carefully curated species and veneer cut offer a beautiful natural variation. The images here reflect the visual range that is likely within our product. Darkest to lightest tones may occur within an installation due to the character of wood.



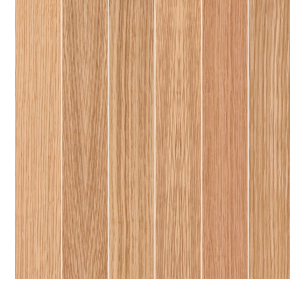
Plain Slice White Maple (NWM)



Plain Slice White Ash (NWA)



Vertical Grain Fir (NVF)



Rift White Oak (NRO)



Plain Slice White Oak (NOK)



Plain Slice Cherry (NPC)



Quartered Mahogany (NGM)



Quartered Sapele (NGS)

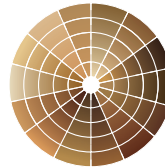


Quartered Walnut (NGW)



Plain Slice Walnut (NWN)

CUSTOM FINISHES



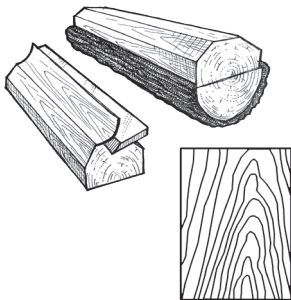
Custom Wood
Species and Finishes
Available

Made-to-order, custom
backer colors available.

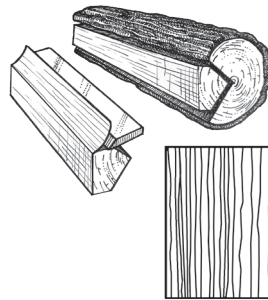
Due to printing limitations, shade may vary from actual product.

VENEER CUTS

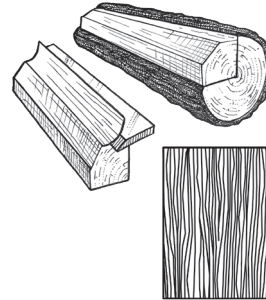
Different cuts of a log will yield different graining visuals. Choose your veneer to achieve your desired look.



Plain Sliced
Produces the well-known cathedral
or loop-grain effect.



Quarter Sliced
Produces a striped, often straight-grain
effect.



Rift Sliced
Produces a tight, linear grain along the entire
length of the veneer.





WOODWORKS® Grille – Forté

Veneered Wall Panels with Notched Backers

RECYCLED
CONTENT

LEED V5

UP TO
60%

COMMON MATERIALS FRAMEWORK

Human Health

Climate Health

Ecosystem Health

Circular Economy

Acoustics

EPD

EPD

✓

✓

VISUAL SELECTION 12" width, 3/4" slat (Available in 4', 6', and 8' nominal lengths)

PERFORMANCE

Item No. ◆	Custom Slat Sizes Available	Space Between Slats (Nominal)	% Open Area	Lbs./S.F.
WOODWORKS® Grille – Forté Veneered Panels	6333L_S14_ _ _	3/4" W 2-1/2" H 3 slats	3-1/4"	81%† 2.1
	6334L_S14_ _ _	3/4" W 2-1/2" H 4 slats	2-1/4"	75% 2.7

CleanAssure™ Disinfectable Panels		
Fog	Spray	Wipe
•	•	•

◆ When specifying or ordering please include the slat length (4, 6, or 8) and finish suffix (e.g. 6333L 4 S14 N Q W – 3 slats, 3/4 × 48 × 2-1/2" in Quartered Walnut veneer).
NOTE: Panel backers are black; custom backer colors available. For additional species/finish and size options, or curved applications options with flexible backers (special order), contact ASQuote@armstrongceilings.com

633 3 L4 S14 NQW
Veneered Wood Slats per Panel: 3 Panel Length: 4' Slat Width & Height Differentiator Veneer: Quartered Walnut

ACCESSORIES

	Item No. ♦	Description	Dimensions Nominal W × L × H (Inches)	Color	PCS/CTN
Accessories	7290GBL	Flat Backer Kit	7/8 × 12 × 1/2"	Black	18
Perimeter Trim	6481F07W1H4_ _ _	4" Veneered Trim with 4 Clips (Item 5925)	3/4 × 96 × 4"	All Veneers	N/A
	6481F07W1H6_ _ _	6" Veneered Trim with 4 Clips (Item 5925)	3/4 × 96 × 6"	All Veneers	N/A
	6481F07W1H8_ _ _	8" Veneered Trim with 4 Clips (Item 5925)	3/4 × 96 × 8"	All Veneers	N/A
	5925	Replacement Trim Clips	N/A	Mill Finish	25
	AX_VESTR_ _ _	Axiom® Vector Straight Trim – Recommend in Black 6" and up	N/A	Silver Grey, Black, Gun Metal	10 LF
	AX_VECUR_ _ _	Axiom Vector Curved Trim – Recommend in Black 6" and up	N/A	Silver Grey, Black, Gun Metal	10 LF
	6408_ _ _	WoodWorks Edgebanding	1-1/4" × 300"	All Veneers	25 LF

◆ When specifying or ordering please include the 3-letter color suffix that coordinates with your WoodWorks wall: (e.g., 6481F07W1H4 N W M).





WOODWORKS® Grille – Forté

Veneered Wall Panels with Notched Backers

RECYCLED
CONTENT

UP TO
60%

LEED V5

COMMON MATERIALS FRAMEWORK

Human Health

Climate Health

Ecosystem Health

EPD

EPD

Circular Economy

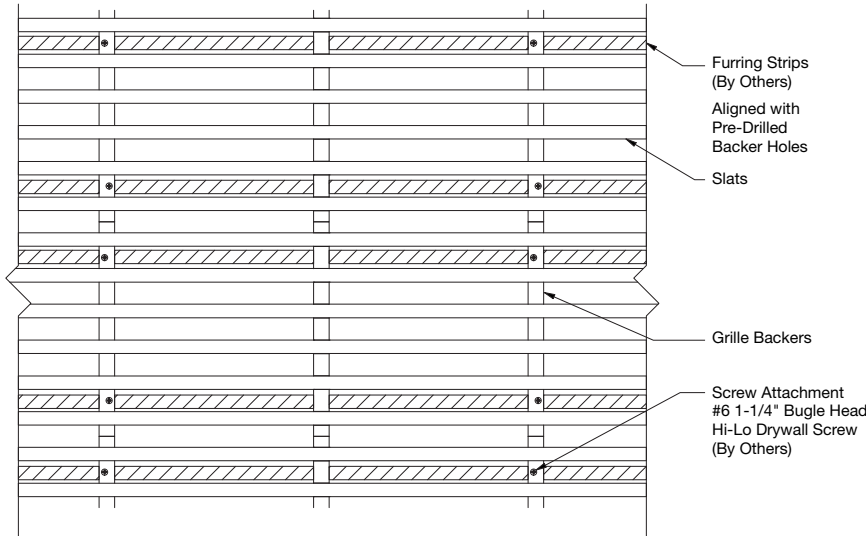
✓

OCCUPANT EXPERIENCE

Acoustics

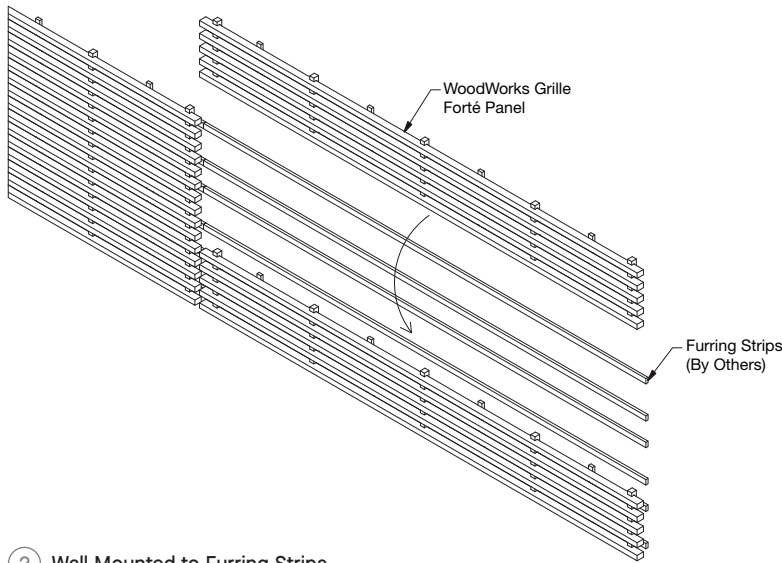
✓

SYSTEM INSTALLATION DETAILS

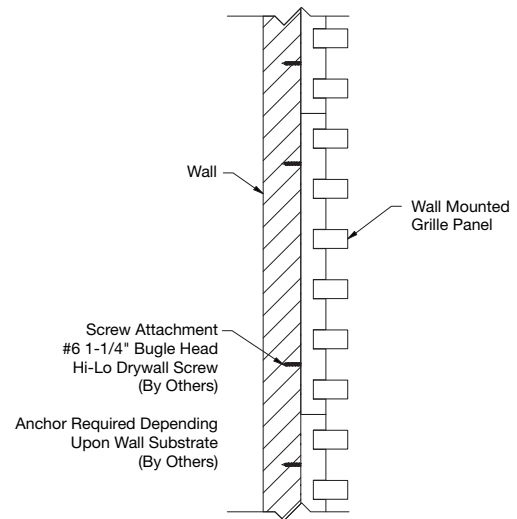


① Wall Mount via Furring Strip

Slat sizes over 2-1/4" are not recommended for wall applications. Contact TechLine for details at 1 877 276-7876.



② Wall Mounted to Furring Strips



③ Wall Mounted Panel

PHYSICAL DATA

Material

Fire-rated particle board (FRPB) with real wood veneers. Vertical Grain Fir (NVF) is FRPB with a reconstituted veneer.

Surface Finish

Clear or tinted semi-gloss coating.

Fire Performance

Class A: ASTM E84 surface burning characteristics.

Flame Spread Index 25 or less. Smoke Developed Index 50 or less.

CAN/ULC S102 surface burning characteristics.

Flame Spread Rating 25 or less. Smoke Developed Classification 50 or less.

Design Considerations

Variation within panel and from panel to panel may occur due to the natural characteristics of the wood and grain.

When installed, there will be a 1" reveal between panel ends. Consider this when designing and laying out the wall and where this reveal will fall within your wall space.

Panel backers are black; consider installing panels on a dark wall or backdrop.

Custom options include different dimensions, species, and finishes.

Design & Pre-Construction Service

For complimentary design and pre-construction assistance, contact ProjectWorks® or visit armstrongceilings.com/projectworks

Site Conditions

It is very important that panels are climatized prior to installation. Relative humidity between 25% and 55%, and temperatures between 50°F and 86°F, must be maintained.

Ordering Considerations

For projects with phased delivery, please coordinate orders. Each separate order is likely to be pulled from different lumber, and therefore will differ in terms of finish range from previous orders.

LEED® is a registered trademark of the U.S. Green Building Council; Living Building Challenge® (LBC) is a registered trademark of the International Living Future Institute; WELL™ and WELL Building Standard™ are trademarks of the International WELL Building Institute; Revit® is a registered trademark of Autodesk, Inc.; FSC® is a registered trademark of Forest Stewardship Council®, A.C., license code FSC-C007626; all other trademarks used herein are the property of AWI Licensing LLC and/or its affiliates © 2025 AWI Licensing LLC

Be sure to account for extra material that is normally needed for wood installations. When installing WoodWorks® Grille – Forté panels, you should consider ordering at least 5% extra material. Up to 10% more may be needed for odd size or unique installations.

Seismic Restraint

WoodWorks Grille – Forté panels have been engineered, tested, and approved for application in all seismic areas when installed per Armstrong wall installation instructions.

Cleaning and Disinfecting

Cleaning and CDC approved disinfecting options available on armstrongceilings.com/cleaning

Warranty

Details at armstrongceilings.com/warranty

Weight

Refer to Visual Selection chart.

