



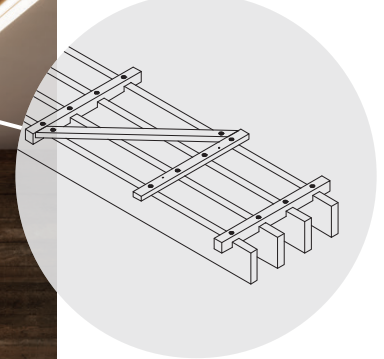
# WOODWORKS® Grille – Forté

## Veneered Ceiling Panels with Notched Backers



**TOTAL  
ACOUSTICS®**  
Sound Absorption (NRC)  
+ Sound Blocking (CAC)

CAD/Revit® drawings at:  
[armstrongceilings.com/cadrevit](http://armstrongceilings.com/cadrevit)



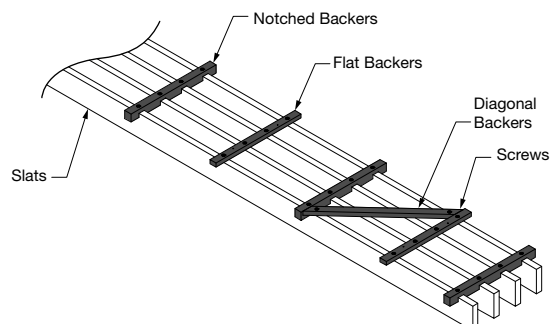
WoodWorks® Grille – Forté veneered panels 3/4" W x 3" H with 3 slats in 8' lengths in Quartered Sapele (NQS)

Ten standard wood veneers offer unparalleled natural beauty through varying species, graining and color.

### KEY SELECTION ATTRIBUTES

- 15 standard panel configurations in 4', 6', and 8' lengths minimize the need for customization, field cutting, and waste
- 10 standard veneers feature various species and cuts for beautiful wood visuals
- Enhanced structural design incorporates notched and diagonal backers to reinforce slat alignment, minimizing the naturally occurring twist of wood, improving handleability during install, and reducing call-backs
- Coordinating veneered trims in 4", 6", and 8" depths
- ASTM E84 Class A fire performance
- Install in the ceiling, on the wall, or create ceiling-to-wall transitions
- Black acoustical infill panels hide the plenum for a clean, finished install visual and provide Total Acoustics® with NRC up to .85 and CAC up to 35
- 2 designs with at least 70% open area to minimize sprinkler install and material cost, achieving a less cluttered finished ceiling with an open aesthetic
- Installs on familiar, heavy-duty Prelude® Grid with pre-drilled backer holes eliminate splitting for long-term durability
- Centered backers allow for a non-directional install, providing flexibility in install layout and clean accessibility
- CleanAssure™ family of products – includes disinfectable panels, suspension systems, and trim
- Premium options include FSC®-certified options, plenum-hiding fleece, and flexible backers for wall-to-ceiling transitions
- Custom options include unique panel configurations and lengths and additional species. Contact [ASQuote@armstrongceilings.com](mailto:ASQuote@armstrongceilings.com)

### VENEER PANEL BACKER DETAIL





# WOODWORKS® Grille – Forté

## Veneered Ceiling Panels with Notched Backers

LEED® WELL | LBC

energy management

construction waste mgmt

regional materials

design for flexibility

EPD

recyclable/extended producer resp.

biobased materials

FSC® (for wood)

recycled content

sourcing of raw materials

material ingredient reporting

low emitting materials

lighting quality

acoustics

60% RECYCLED CONTENT

LOCATION DEPENDENT

PREMIUM OPTION

WITH INFILL PANEL

For LEED contribution contact TechLine

### FINISH RANGES

The carefully curated species and veneer cut offer a beautiful natural variation. The images here reflect the visual range that is likely within our product. Darkest to lightest tones may occur within an installation due to the character of wood.



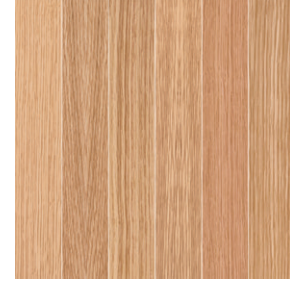
Plain Slice White Maple (NWM)



Plain Slice White Ash (NWA)



Vertical Grain Fir (NVF)



Rift White Oak (NRO)



Plain Slice White Oak (NOK)



Plain Slice Cherry (NPC)



Quartered Mahogany (NGM)



Quartered Sapele (NGS)

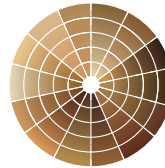


Quartered Walnut (NGW)



Plain Slice Walnut (NWN)

### CUSTOM FINISHES



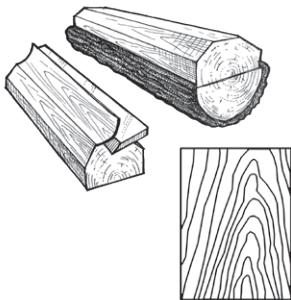
Custom Wood Species and Finishes Available

Made-to-order, custom backer colors available.

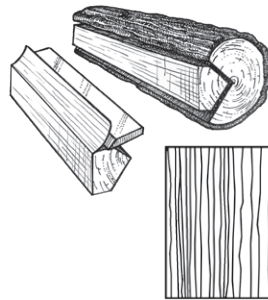
Due to printing limitations, shade may vary from actual product.

### VENEER CUTS

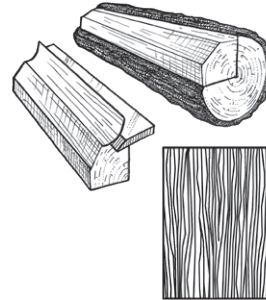
Different cuts of a log will yield different graining visuals. Choose your veneer to achieve your desired look.



**Plain Sliced**  
Produces the well-known cathedral or loop-grain effect.



**Quarter Sliced**  
Produces a striped, often straight-grain effect.



**Rift Sliced**  
Produces a tight, linear grain along the entire length of the veneer.



# WOODWORKS® Grille – Forté

Veneered Ceiling Panels with Notched Backers

Indicates panel with unobstructed construction where the openings are at least 70% of the cross-section area and the depth of the member does not exceed the least dimension of the openings.

## STANDARD PANEL CONFIGURATIONS 12" width, 3/4" slat (Available in 4', 6', and 8' nominal lengths)

3/4" SLAT WIDTH				
	3 Slats Per Panel 81% Open Area	4 Slats Per Panel 75% Open Area	5 Slats Per Panel 69% Open Area	6 Slats Per Panel 63% Open Area
2-1/2" SLAT HEIGHT	 Item 6333L _ S14 _ _ _ *	 Item 6334L _ S14 _ _ _ *	 Item 6335L _ S14 _ _ _	 Item 6336L _ S14 _ _ _
3" SLAT HEIGHT	 Item 6333L _ S15 _ _ _	 Item 6334L _ S15 _ _ _	 Item 6335L _ S15 _ _ _	 Item 6336L _ S15 _ _ _
3-1/2" SLAT HEIGHT	 Item 6333L _ S16 _ _ _	 Item 6334L _ S16 _ _ _	 Item 6335L _ S16 _ _ _	 Item 6336L _ S16 _ _ _
4" SLAT HEIGHT	 Item 6333L _ S17 _ _ _	 Item 6334L _ S17 _ _ _	 Item 6335L _ S17 _ _ _	

### ITEM NUMBER KEY

**633 3 L4 S14 NQW**

Veneered Wood    Slats per Panel: 3    Panel Length: 4'    Slat Width & Height Differentiator    Veneer: Quartered Walnut

When specifying or ordering please include the slat length (4, 6, or 8) and finish suffix (e.g. 6333L 4 S14 N W N – 3 slats, 3/4 x 48 x 2-1/2" in Plain Slice Walnut veneer).

\* Panel configuration is approved for use on walls. Refer to walls data page for details.



# WOODWORKS® Grille – Forté

## Veneered Ceiling Panels with Notched Backers

LEED® WELL LBC

60% RECYCLED CONTENT

For LEED contribution contact TechLine

energy management	construction waste mgmt	regional materials	design for flexibility	EPD	recyclable/extended producer resp.	biobased materials	FSC® (for wood)	recycled content	sourcing of raw materials	material ingredient reporting	low emitting materials	lighting quality	acoustics
✓	✓	✓	✓	✓	✓	✓	✓	✓	✓	✓	✓	✓	✓
LOCATION DEPENDENT				PREMIUM OPTION				WITH INFILL PANEL					

### VISUAL SELECTION

	Item No. ♦	Custom Slat Sizes Available			Space Between Slats (Nominal)	% Open Area	LBS/ SF
WOODWORKS® Grille – Forté Veneered Panels	6333L_S14_ _ _ *	3/4" W	2-1/2" H	3 slats	3-1/4"	81%†	2.1
	6333L_S15_ _ _	3/4" W	3" H	3 slats	3-1/4"	81%†	2.5
	6333L_S16_ _ _	3/4" W	3-1/2" H	3 slats	3-1/4"	81%	2.8
	6333L_S17_ _ _	3/4" W	4" H	3 slats	3-1/4"	81%	3.2
	6334L_S14_ _ _ *	3/4" W	2-1/2" H	4 slats	2-1/4"	75%	2.7
	6334L_S15_ _ _	3/4" W	3" H	4 slats	2-1/4"	75%	3.2
	6334L_S16_ _ _	3/4" W	3-1/2" H	4 slats	2-1/4"	75%	3.7
	6334L_S17_ _ _	3/4" W	4" H	4 slats	2-1/4"	75%	4.2
	6335L_S14_ _ _	3/4" W	2-1/2" H	5 slats	1-5/8"	69%	3.3
	6335L_S15_ _ _	3/4" W	3" H	5 slats	1-5/8"	69%	4.0
	6335L_S16_ _ _	3/4" W	3-1/2" H	5 slats	1-5/8"	69%	4.6
	6335L_S17_ _ _	3/4" W	4" H	5 slats	1-5/8"	69%	5.2
	6336L_S14_ _ _	3/4" W	2-1/2" H	6 slats	1-1/4"	63%	4.0
	6336L_S15_ _ _	3/4" W	3" H	6 slats	1-1/4"	63%	4.7
	6336L_S16_ _ _	3/4" W	3-1/2" H	6 slats	1-1/4"	63%	5.5

### PERFORMANCE

CleanAssure™ Disinfectable Panels		
Fog	Spray	Wipe
*	*	*

### ACOUSTICAL INFORMATION

Performance determined by perforation size. Dots represent high level of performance.

Infill Panel Item No.	NRC	+	CAC	=	Total Acoustics <sup>1</sup>
2820BK	0.85		35		BEST
1713BL	0.70		35		BETTER
1318	0.75		30		N/A
5823 or 6657	0.75		N/A		N/A
	0.75		N/A		N/A

<sup>1</sup> Total Acoustics® ceiling panels have an ideal combination of sound absorption and sound blocking in one product.  
**GOOD** (NRC 0.60-0.65; CAC 35+)  
**BETTER** (NRC 0.70-0.75; CAC 35+)  
**BEST** (NRC 0.80+; CAC 35+)

### ITEM NUMBER KEY

633	3	L4	S14	NQW
Veneered Wood	Slats per Panel: 3	Panel Length: 4'	Slat Width & Height Differentiator	Veneer: Quartered Walnut

♦ When specifying or ordering please include the slat length (4, 6, or 8) and finish suffix (e.g. 6333L 4 S14 **N Q W** – 3 slats, 3/4 × 48 × 2-1/2" in Quartered Walnut veneer).  
 \* Panel configuration is approved for use on walls. Refer to walls data page for details.  
 † Icon indicates panel with unobstructed construction where the openings are at least 70% of the cross-section area and the depth of the member does not exceed the least dimension of the openings.  
 NOTE: Panel backers are black; custom backer colors available. For additional species/finish and size options, or curved applications options with flexible backers (special order), contact ASQuote@armstrongceilings.com





# WOODWORKS® Grille – Forté

## Veneered Ceiling Panels with Notched Backers

LEED® WELL™ LBC

energy management

construction waste mgmt

regional materials

design for flexibility

EPD

recyclable/extended producer resp.

biobased materials

FSC® (for wood)

recycled content

sourcing of raw materials

material ingredient reporting

low emitting materials

lighting quality

acoustics

60% RECYCLED CONTENT

For LEED contribution contact TechLine

LOCATION DEPENDENT

PREMIUM OPTION

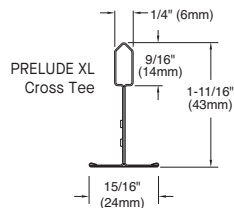
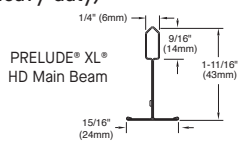
WITH INFILL PANEL

### ACCESSORIES

	Item No. ♦	Description	Dimensions Nominal W x L x H (inches)	Color	Pcs/Ctn
Suspension Systems	7301BL	Prelude® XL® 12' HD Main Beam	15/16" x 144" x 1-11/16"	Black	20
	XL7341BL	Prelude XL 4' Cross Tee	15/16" x 48" x 1-11/16"	Black	60
	XL8320	Prelude XL 2' Cross Tee	15/16" x 24" x 1-3/8"	Black	60
	7800BL	Angle Wall Molding	7/8" x 144" x 7/8"	Black	30
Accessories	5687	Backer Clip	3/8" x 11/16" x 7/8"	Black	250
	7100	Heavy Duty Wall Anchor	1-1/4" x 3" x 1"	N/A	50
	7104	Torsion Spring Saddle	N/A	Mill Finish	25
	7105	Torsion Spring Bracket	N/A	Mill Finish	25
	7106	Heavy Duty Torsion Spring	N/A	Mill Finish	25
	7290GBL	Flat Backer Kit	7/8" x 12" x 1/2"	Black	18
Acoustical Infill Panels	5823	BioAcoustic™ Infill Panel	24" x 24" x 5/8"	Black Matte	12
	6657	BioAcoustic Infill Panel	11" x 48" x 5/8"	Black Matte	12
	2820BK	Calla® Square Lay-in Panel	24" x 24" x 7/8"	Black	10
Perimeter Trim	6481F07W1H4_ _ _	4" Veneered Trim with 4 Clips (Item 5925)	3/4" x 96" x 4"	All Veneers	N/A
	6481F07W1H6_ _ _	6" Veneered Trim with 4 Clips (Item 5925)	3/4" x 96" x 6"	All Veneers	N/A
	6481F07W1H8_ _ _	8" Veneered Trim with 4 Clips (Item 5925)	3/4" x 96" x 8"	All Veneers	N/A
	5925	Replacement Trim Clips	N/A	Mill Finish	25
	7239	Adjustable Trim Clip	N/A	Mill Finish	50
	AX_VESTR_ _ _	Axiom Vector® Straight Trim - Recommend in Black 6" and up	N/A	Silver Grey, Black, Gun Metal 10 LF	
	AX_VECUR_ _ _	Axiom Vector Curved Trim - Recommend in Black 6" and up	N/A	Silver Grey, Black, Gun Metal 10 LF	
	6408D5_ _ _	WoodWorks Edgebanding (Grille – Forté)	1-1/4" x 300"	All Veneers	25 LF

♦ When specifying or ordering please include the 3-letter color suffix that coordinates with your WoodWorks ceiling: (e.g., 6481F07W1H4 N W M).

### SUSPENSION SYSTEMS (Heavy-duty)



### PHYSICAL DATA

**Material**  
Fire-rated particle board (FRPB) with real wood veneers. Vertical Grain Fir (NVF) is FRPB with a reconstituted veneer.

**Surface Finish**  
Clear or tinted semi-gloss coating.

**Fire Performance**  
Class A: ASTM E84 surface burning characteristics.  
Flame Spread Index 25 or less. Smoke Developed Index 50 or less.  
CAN/ULC S102 surface burning characteristics.  
Flame Spread Rating 25 or less. Smoke Developed Classification 50 or less.

These panels, as with other architectural features located at the ceiling, may obstruct or skew the planned fire sprinkler water distribution pattern, or possibly delay or accelerate the activation of the sprinkler or fire detection systems by channeling heat from a fire either toward or away from the device. Consult a fire protection engineer, NFPA 13, and local codes for guidance where automatic fire detection and suppression systems are present.

**Design Considerations**  
Variation within panel and from panel to panel may occur due to the natural characteristics of the wood and grain.

When installed, there will be a 1" reveal between panel ends. Consider this when designing and laying out the ceiling and where this reveal will fall within the ceiling plane.

Unobstructed construction has horizontal structural members that are not solid, where the openings are at least 70% of the cross-section area and the depth of the member does not exceed the least dimension of the openings, or all construction types, with the exception of panel construction, where the spacing of structural members exceeds 7-1/2' (2.3 m) on center.

All veneer panel configurations utilize a 1" notched alignment backer regardless of slat height.

Custom options include different dimensions, species and finishes.

**Infill Panel Use**  
Black infill panels will provide acoustic benefits and minimize the appearance of the matte black panel backers.

If no infill panel is used, unfinished parts of the suspension system and Axiom® trim will be visible from below.

**Site Conditions**  
It is very important that panels are climatized prior to installation. Relative humidity between 25% and 55%, and temperatures between 50°F and 86°F, must be maintained.

**Ordering Considerations**  
For projects with phased delivery, please coordinate orders. Each separate order is likely to be pulled from different lumber, and therefore will differ in terms of finish range from previous orders.

Be sure to account for extra material that is normally needed for wood installations. When installing WoodWorks® Grille – Forté panels, you should consider ordering at least 5% extra material. Up to 10% more may be needed for odd size or unique installations.

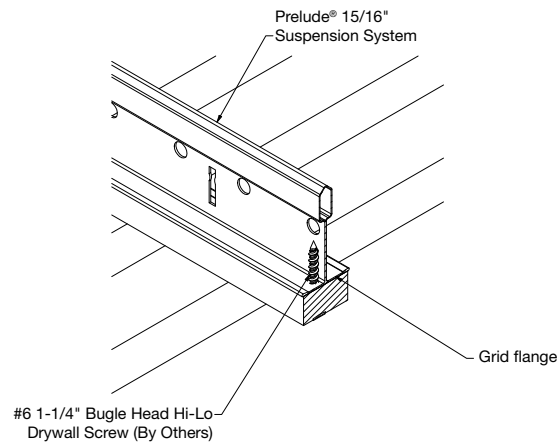
**Seismic Restraint**  
WoodWorks Grille – Forté panels have been engineered, tested, and approved for application in all seismic areas when installed per Armstrong Ceilings installation instructions.

**Cleaning and Disinfecting**  
Cleaning and CDC-approved disinfecting options available on [armstrongceilings.com/cleaning](http://armstrongceilings.com/cleaning)

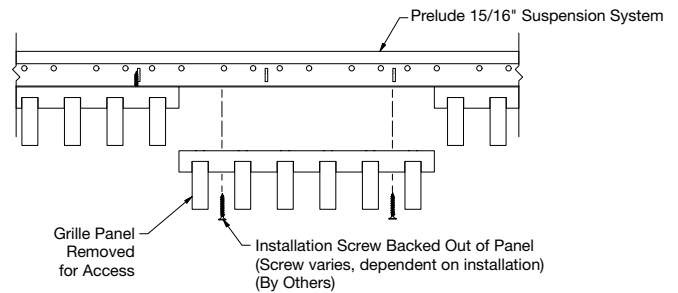
**Warranty**  
Details at [armstrongceilings.com/warranty](http://armstrongceilings.com/warranty)

**Weight**  
Refer to Visual Selection chart.

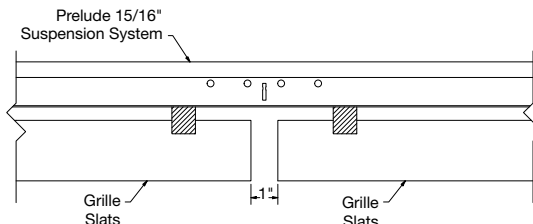
## SYSTEM INSTALLATION DETAILS



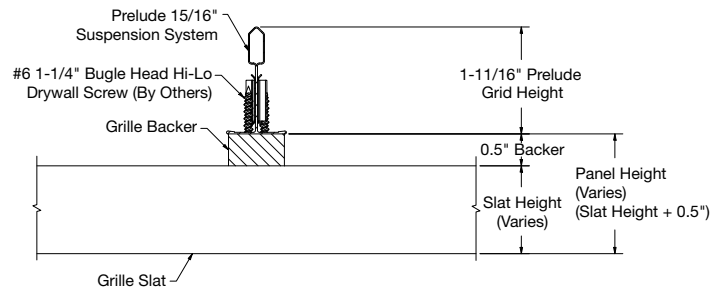
① Screw to Grid



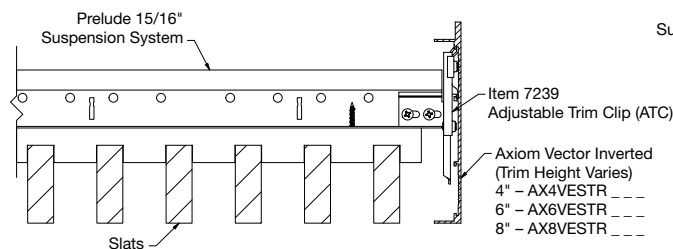
## ② Screw Access



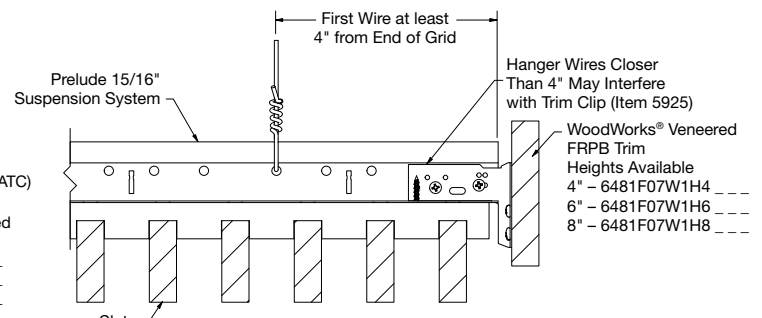
### ③ End Slat Spacing Between Panels



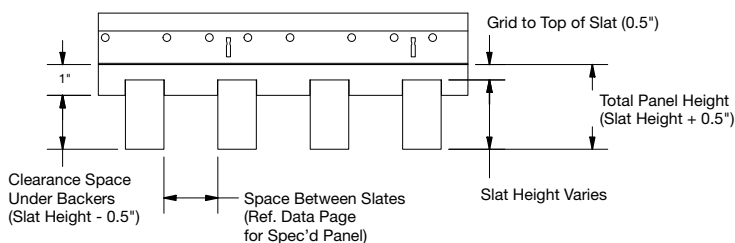
④ Grille to Main Beam



⑤ Axiom® Trim to Main Beam



⑥ Perimeter with Veneered Trim



### ⑦ Typical Integration Detail