

WOODWORKS® Concealed
Concealed Suspension

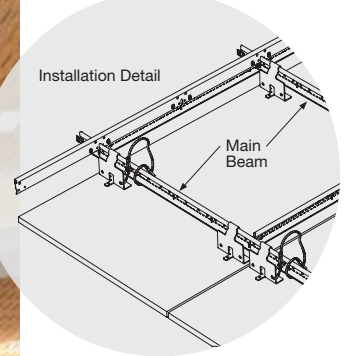
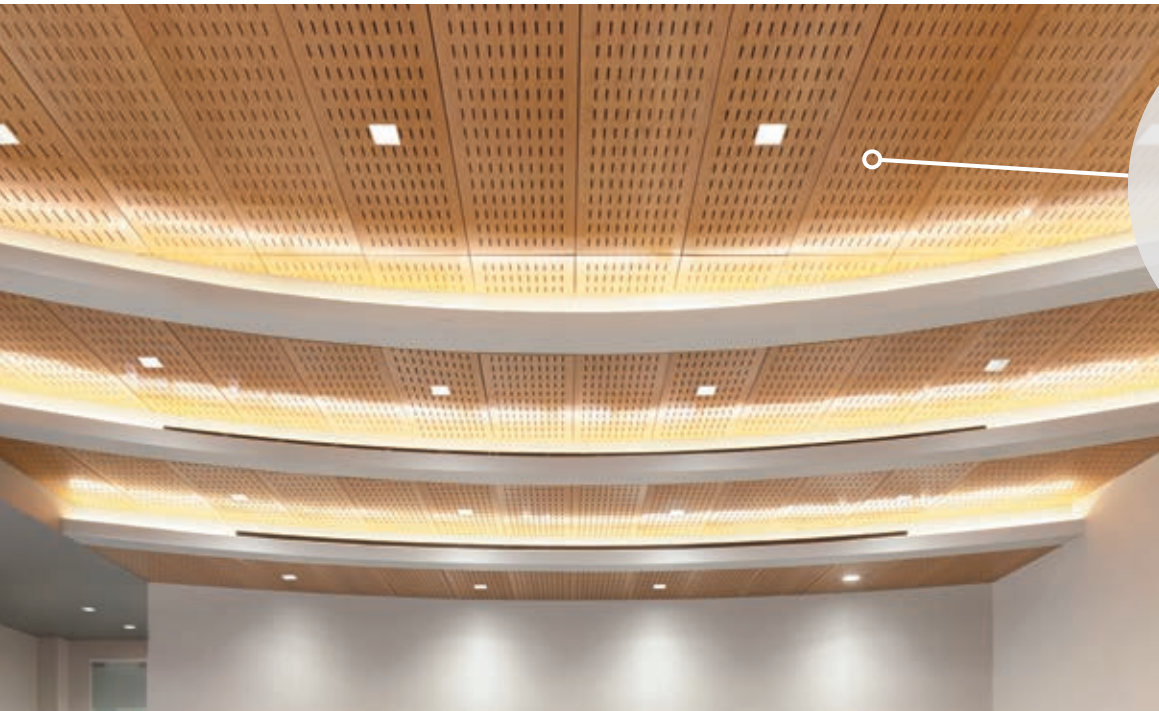
*Custom looks
with Standard
Products*



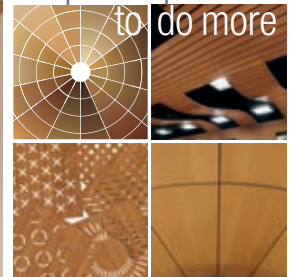
24/7
DEFEND™
Solutions for Healthier,
Safer Spaces

CONTAIN CLEAN PROTECT

CAD/Revit® drawings at:
armstrongceilings.com/cadrevit



plus capabilities
to do more



armstrongceilings.com/capabilities
See more photos at:
armstrongceilings.com/photogallery

▲ WoodWorks® Concealed 24" x 72" panels with W5 perforation in Bamboo Patina with Prelude® 15/16" suspension system

This easy-to-install ceiling with a concealed suspension offers a continuous, monolithic visual.

KEY SELECTION ATTRIBUTES

- Mix and match standard panel sizes on the same project
- Narrow 1/4" reveal visual and 6" aluminum trim available in coordinating wood finishes, or black
- CleanAssure™ family of products – includes disinfectable panels, suspension systems, and trim
- Select products included in the FAST134 program – ready to ship in 4 weeks or less
- Coordinating WoodWorks® walls
- Hook-on panels (for standard 15/16" suspension system) provide safe and secure downward accessibility
- Shorter lead times and lower cost than custom millwork
- Factory-edge banded for superior quality
- Complete standard system from one manufacturer (suspension system/ panels/trim)
- Acoustical fleece option available for increased sound absorption
- USDA Biobased content: 100%

VENEERS Due to printing limitations, shade may vary from actual product.

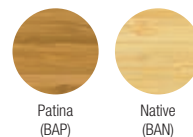
Natural Variations™
(Real Wood Veneers)



Constants™
(Real Wood Veneers)



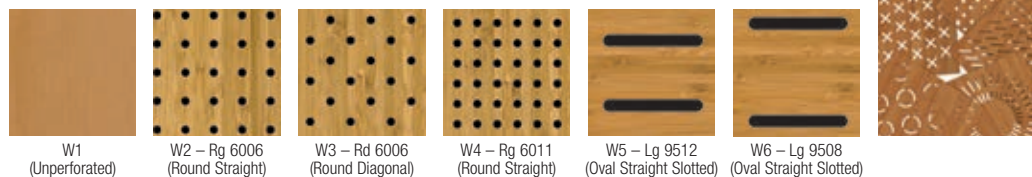
Bamboo*



Custom Veneers and
Finishes Available
(extended lead times)

* Veneer is rapidly renewable.
Bamboo is a grass that only requires 3-7 years for maturity and does not have to be replanted after each harvest.

PERFORATION OPTIONS (Actual 1:6 scale shown)



*Custom
Perforations
Available*

NOTE: Slotted perforations run parallel to the length of the panel and borders vary with panel size.

TechLine 877 276-7876
armstrongceilings.com/woodworksconcealed



WOODWORKS® Concealed

Concealed Suspension



LEED® WELL | LBC

UP TO 63% RECYCLED CONTENT

energy management, construction waste mgmt, regional materials, design for flexibility, EPD, recyclable/extended producer resp., biobased materials, FSC® (for wood), recycled content, sourcing of raw materials, material ingredient reporting, low emitting materials, lighting quality, acoustics

Calculate sustainability with GreenGenie™ armstrongceilings.com/greengenie

VISUAL SELECTION

Edge Profile	Item No. ♦	Dimensions Nominal W x L x H (Inches) Custom Sizes Available	Perforations
FSC® certified WOODWORKS® Concealed 1/4" Reveal	5983	24 x 48 x 3/4"	W1, W2, W3, W4, W5, W6
	5984	24 x 72 x 3/4"	W1, W2, W3, W4, W5, W6
	5985	24 x 96 x 3/4"	W1, W2, W3, W4, W5, W6

PERFORMANCE

Fire Rating	CleanAssure™ DURABILITY Disinfectable Panels			
	Fog	Spray	Wipe	Soil
Class A	•	•	•	•
Class A	•	•	•	•
Class A	•	•	•	•

ACOUSTICAL INFORMATION

Performance determined by perforation size. Dots represent high level of performance.

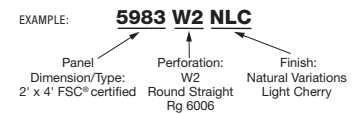
Perforation	NRC**
W1 Unperforated	N/A
W2 Round Straight	0.40
W3 Round Diagonal	0.40
W4 Round Straight	0.65
W5 Oval Straight Slotted	0.55
W6 Oval Straight Slotted	0.40



FAST134 program items ready to ship from manufacturer in 4 weeks or less. Up-to-date lead times and product options (sizes and colors) at armstrongceilings.com/fast134.

♦ When specifying or ordering, include the appropriate 2-digit perforation and 3-letter color suffixes. For veneers, sizes, and perforation patterns available as special order, call TechLine at 1 877 276-7876.

** Maximum NRC achieved with acoustical infill (item 8200T10 or 5479, unless noted otherwise).



WOODWORKS® Concealed

Concealed Suspension

USDA
CERTIFIED
BIOBASED
PRODUCT
PRODUCT 100%



LEED® WELL™ LBC
UP TO 63% RECYCLED CONTENT

energy management
construction waste mgmt
regional materials
design for flexibility
EPD
recyclable/extended producer resp.
biobased materials
FSC® (for wood)
recycled content
sourcing of raw materials
material ingredient reporting
low emitting materials
lighting quality
acoustics

LOCATION DEPENDENT

Calculate sustainability with GreenGenie™
armstrongceilings.com/greengenie

ACCESSORIES

Item No. ♦	Description	Dimensions Nominal (Inches)	Color	Pieces/Carton
8200T10	Fiberglass Infill Panel	24 x 24 x 1"	Black	12
5479	BioAcoustic™ Infill Panel	24 x 24 x 5/8"	Beige	12
5823	BioAcoustic Infill Panel	24 x 24 x 5/8"	Black (Matte)	12
7239	Adjustable Trim Clip	N/A	N/A	50

♦ When specifying or ordering, include the 3-letter color suffix that coordinates with your WoodWorks ceiling (e.g., 6408 N M P)

* Trim cartons include FXTBC Clips and FX4SPLICE Splice Plates.

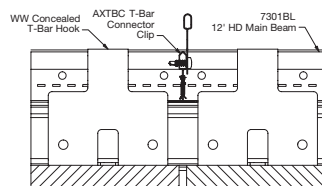
NOTE: Adjustable Trim Clip used with standard Axiom® or MetalWorks™ Trim systems.

SUSPENSION SYSTEMS

When ordering suspension system materials, please note that this product requires Prelude® Heavy-duty (HD) main beams and 2' cross tees that are full height (1-11/16"). Both suspension system components should be specified in Tech Black (BL). 15/16" Prelude® BL HD (Tech Black)

Item No.	Description	Dimensions (Inches)	Pieces/Carton
5986	T-Bar Hook†	Nominal 4 x 2 x 3"	50
7123	Wood Screws	5/8"	300/Pkg
6091	Safety Cable	24" x 3/32"	50
SH12	Support Hanger	144" x 2"	12

† For 24" x 48" panel, install 4 hooks; for 24" x 72" panel, install 6 hooks; for 24" x 96" panel, install 8 hooks.
NOTE: Three screws per hook. Refer to installation instructions at armstrongceilings.com/installation for a better understanding of suspension systems requirements.



Installation Detail – WoodWorks Concealed Ceiling System

TRIM FOR WOODWORKS® PANELS

Item No. ♦	Description	Dimensions Nominal W x L x H (Inches)	Colors	Pieces/Carton
		Custom Sizes Available		
6603W1__**	Concealed Trim (aluminum) for WoodWorks panels	6" x 120"	See below	6
6408__*	3/4" Edge Banding	3/4" x 300"	See below	1

♦ When specifying or ordering, include the 3-letter color suffix that coordinates with your WoodWorks ceiling (e.g., 6603W1N M P)

* Images™ edge banding coordinates with Natural Variations™ Light Cherry, Dark Cherry, and Maple. Use the Natural Variations colors when ordering.

** FXTBC, FXPSPLICE, FX4SPLICE, included.

AXIOM® TRIM

Trim cartons include AXTBC Clips and AXSPLICE Plates.

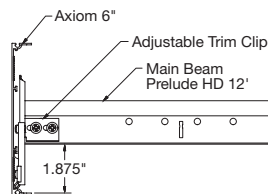
Item No. ♦♦	Description	Dimensions Nominal W x L x H (Inches)	Pieces/Carton
		Custom Sizes Available	
7239***	Adjustable Trim Clip Allows Axiom trim to be positioned up to 3-3/4" below the grid face to accommodate deeper panel offsets (best aesthetic with Axiom ≥ 6" tall)	—	50

FAST
4 WEEKS
or Less

FAST134 program items ready to ship from manufacturer in 4 weeks or less. Up-to-date lead times and product options (sizes and colors) at armstrongceilings.com/fast134.

♦♦ When specifying or ordering, include the appropriate 2-letter color suffix.
*** Specify aluminum substrate trim to be used with WoodWorks® panels or planks that drop greater than 3/8" below the grid flange, such as Channeled, Linear, or Grille products.

INSTALLATION OF TRIM (ALUMINUM SUBSTRATE) FOR WOODWORKS® PANELS



Adjustable Trim Clip (7239) in standard position



WOODWORKS® – Standard

WOODWORKS® Concealed Concealed Suspension

USDA
CERTIFIED
BIOBASED
PRODUCT
PRODUCT 100%



LEED® WELL™ | LBC
UP TO 63% RECYCLED CONTENT

energy management
construction waste mgmt
regional materials
design for flexibility
EPD

recyclable/extended producer resp.
biobased materials
FSC® (for wood)
recycled content
sourcing of raw materials
material ingredient reporting
low emitting materials
lighting quality
acoustics

LOCATION DEPENDENT

WITH INFILL PANEL

Calculate sustainability with GreenGenie™
armstrongceilings.com/greengenie

VENEER TRIM FINISHES FOR WOODWORKS® PANELS

Due to printing limitations, shade may vary from actual product.

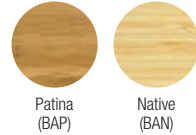
Natural Variations™ (Real Wood Veneers)



Constants™ (Real Wood Veneers)



Bamboo*



* Veneer is rapidly renewable. Bamboo is a grass that only requires 3-7 years for maturity and does not have to be replanted after each harvest.

INFILL PANELS

Item Number	Description	Dimensions (Inches)	NRC	CAC	Colors	Pieces/Carton
5479	BioAcoustic™ Infill Panel	24 x 24 x 5/8"	0.75	N/A	Beige Matte	12
5823	BioAcoustic Infill Panel	24 x 24 x 5/8"	0.75	N/A	Black Matte	12
8200T10	Fiberglass Infill Panel	24 x 24 x 1"	0.80	N/A	Black Gloss	12

INFILL PANEL OPTIONS



1. BioAcoustic™ Infill Panel 5823 – Black
2. BioAcoustic™ Infill Panel 5479 – Beige
3. 1" Fiberglass Infill Bag 8200T10

PHYSICAL DATA

Material
FSC® certified fire-retardant particle board with face-cut veneers (RA-COC-003601). For more information about FSC® certified products, or to view our FSC® certification letter, visit armstrongceilings.com/woodworks/fsc

6603 - Face-cut veneer or black paint on aluminum laminate substrate

Surface Finish
Clear or tinted semi-gloss coating

Fire Performance
Class C: ASTM E84 surface burning characteristics. Flame Spread Index 25 or less. Smoke Developed Index 50 or less.

Class A: CAN/ULC S102 surface burning characteristics. Flame Spread Rating 25 or less. Smoke Developed Classification 50 or less.

ASTM E1264 Classification
Type XX - Fire Class A

Primary (Embodied) Energy
See all LCA information on our EPDs.

Application Considerations
Variation among panels may occur due to the natural characteristics of the wood and grain.

Use of large wood panels may result in deflection up to 1/8" and cause alignment inconsistency due to size and ambient conditions.

It is very important that WoodWorks® panels are climatized prior to installation. Relative humidity between 25% and 55%, and temperatures between 50°F and 86°F, must be maintained throughout the life of the product.

Design Considerations
For additional configuration ideas, refer to the WoodWorks Concealed Technical Guide, BPCS-4274, or visit armstrongceilings.com/woodworks

Do not mix different panel sizes with slotted perforations. Perforation borders will not align. The use of Armstrong® Prelude® 15/16" suspension system is strongly recommended.

Cloud installations less than 6' wide are not recommended. Not recommended for SingleSpan™ corridor applications.

Specification Consideration
Attention: For FSC® certified wood products to maintain their CoC certification, products must be sold to a CoC certified distributor, or directly to the installing contractor. Failure to do so breaks the CoC.

Seismic Restraint
WoodWorks Concealed panels have been engineered, tested, and approved for application in all seismic areas when installed per Armstrong Ceilings installation instructions.

Cleaning and Disinfecting
Cleaning and CDC approved disinfecting options available on armstrongceilings.com/cleaning

FAST134 Program Considerations
Size of Job Matters: Big jobs, over 2500 SF or 50 pieces for shapes/vertical elements will have longer lead times.

Location Matters: Transit time not included. We are ready to ship in 1 week on FAST1 items. However, transit to the states west of Wyoming may add time.

Distributor Truck Schedule Matters: We rely on distribution to help move products around the country. When speed matters, work with your local distributor to ensure FAST134 service.

Stock vs Made-to-Order Matters: FAST3 & FAST4 items are made-to-order and will ship direct to distributor. FAST1 (stocked items) will go through distribution and depend on distributor truck schedules.

Warranty
Details at armstrongceilings.com/warranty

Weight/Square Feet
5983, 5984, 5985 - 2.75 lbs/SF; bulk packaged per order. Suspension system, hardware, and accessories ordered separately.

