

TECTUM® TECTUM High NRC

Square Lay-in
Acoustical Ceiling Panels
coarse texture



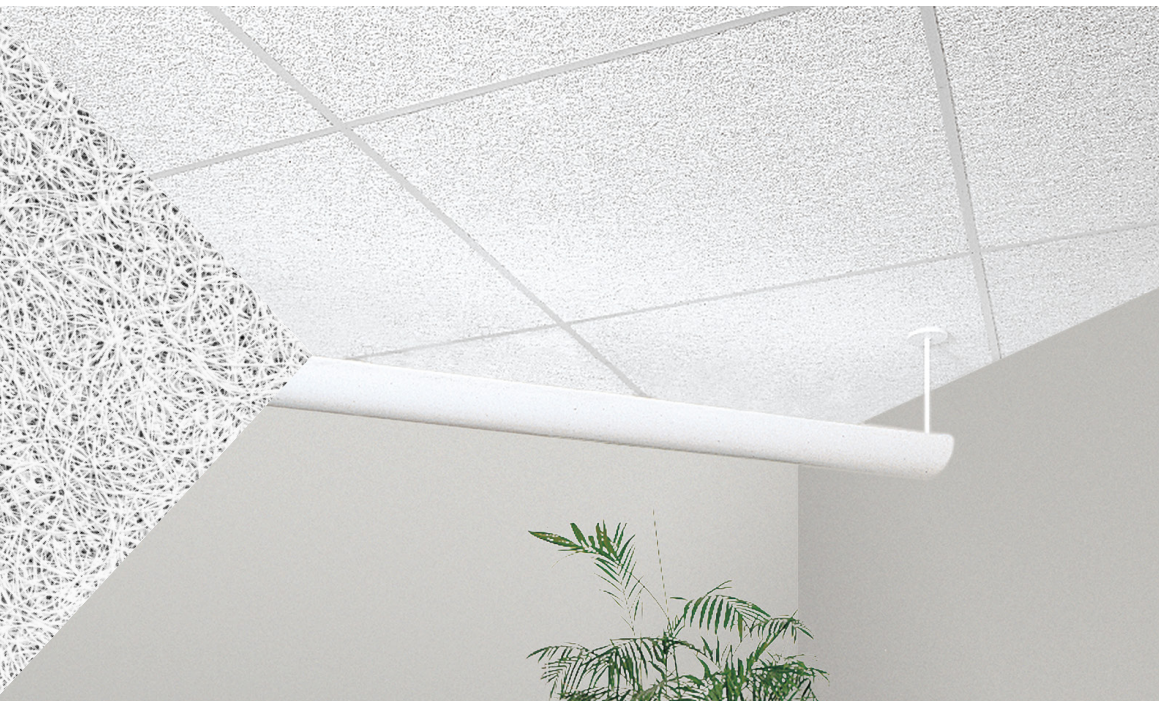
**TOTAL
ACOUSTICS®**
Sound Absorption (NRC)
+ Sound Blocking (CAC)



SUSTAIN®
High Performance
Sustainable
Ceiling Systems



FAST134
Select Items Ship Fast
armstrongceilings.com/fast134



Tectum Lay-in 24" x 24" panels in White with Prelude® XL 15/16" suspension system

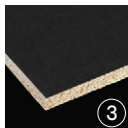
CAD/Revit® drawings at:
armstrongceilings.com/cadrevit

Tectum® Lay-in and Tectum Lay-in High NRC ceiling panels provide durable, sustainable, and acoustical options for a wide variety of applications.

KEY SELECTION ATTRIBUTES

- Tectum Lay-in panels have an NRC of up to 0.90 and UL® Certified acoustics with acoustical testing and reporting that align with industry-wide best practices
- Tectum High NRC panels have a proprietary, factory-applied acoustical backer, adding sound absorption that is certified by UL
- Select products included in the FAST134 program – ready to ship in 4 weeks or less
- All panel thicknesses (1", 1-1/2", and 2") are now part of the Sustain® portfolio and meet the most stringent industry sustainability compliance standards today. Listed colors and custom sizes are included.
- Mold and mildew-resistant surface
- Durable for heavy-use interiors
- Wide variety of color options available, including custom colors
- Can be field painted up to six times without impacting acoustic or fire performance
- Short lead times
- CleanAssure™ family of products – includes disinfectable panels, suspension systems, and trim (standard colors only)
- USDA Biobased content: 98%
- Made in the U.S.A. of domestic and global content
- Build America, Buy America (BABA) Act compliant

DETAILS



1. Tectum Lay-in
2. Tectum Lay-in with Prelude® 15/16" suspension system
3. Tectum Lay-in High NRC proprietary acoustical backer

TECTUM® TECTUM High NRC

Square Lay-in
Acoustical Ceiling Panels
coarse texture

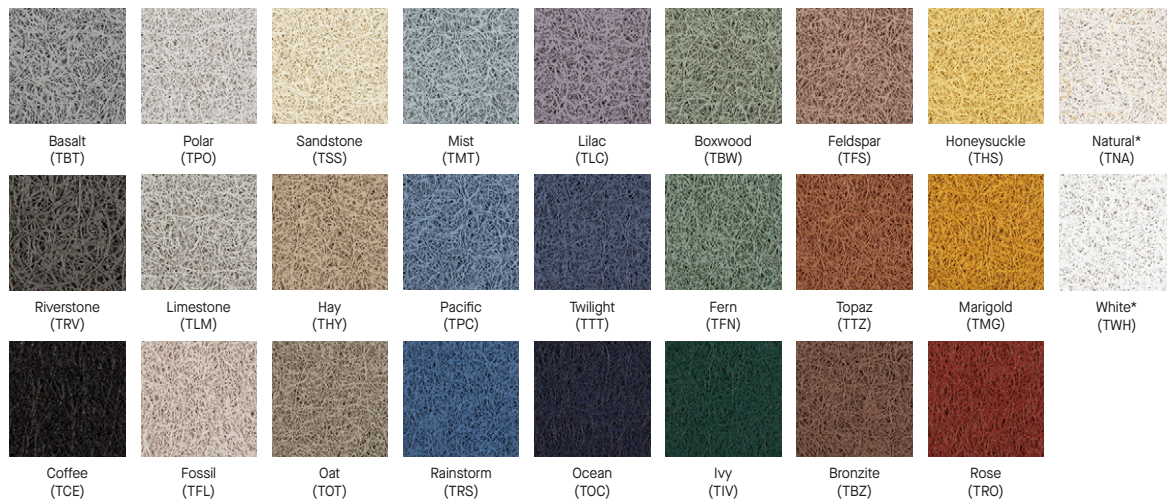
USDA
CERTIFIED
BIOBASED
PRODUCT
PRODUCT 95%



LEED V5		
COMMON MATERIALS FRAMEWORK		
Climate Health		EPD
Human Health	Declare Label	EPD
	HPD	FSC
	3rd Party CDPH	✓
OCCUPANT EXPERIENCE		
Acoustics		✓

TECTUM DESIGN CAPABILITIES

COLORS Due to printing limitations, shade may vary from actual product.



Custom Colors
Available**

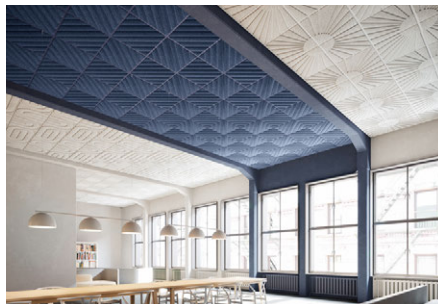
* **Standard color options:** Nature-inspired colors are premium.
All colors shown are pre-qualified to meet Sustain® portfolio requirements.

** Custom, made-to-order colors must be evaluated if sustainability criteria is required. Lead time will increase.
Contact ASQuote@armstrongceilings.com

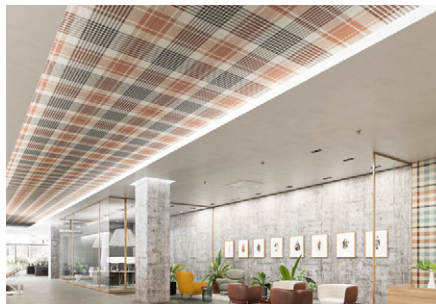
PREMIUM SIZE PARAMETERS

Get Tectum Lay-in ceilings in sizes up to 96"	Thickness	Width	Length
	1"	6" – 30"	12" – 96"
	1-1/2" & 2"	6" – 48"	12" – 96"

HIGH DESIGN IN STANDARD PRODUCTS A New Way to Think About Tectum



Tectum® DesignArt®
Mix and match Shapes and Lines
for a truly unique visual!
armstrongceilings.com/designart



Tectum® Create!™
Create beautiful, unique spaces
with printed imagery!
armstrongceilings.com/tectumcreate

TECTUM® TECTUM High NRC

Square Lay-in
Acoustical Ceiling Panels
coarse texture



LEED V5

COMMON MATERIALS FRAMEWORK		Climate Health	EPD
Human Health	Declare Label	Ecosystem Health	EPD
	HPD	Circular Economy	FSC
	3rd Party CDPH		✓
OCCUPANT EXPERIENCE		Acoustics	✓

VISUAL SELECTION

armstrongceilings.com/catdwgs	Susp. Item Dwg. No. ◆	Dimensions Nominal W x L x H (Inches)
TECTUM® Square Lay-in (FSC® certified)	1 8184T10__	24 × 24 × 1" □
	8183T10__	24 × 48 × 1" □
	Other Panel Sizes	See premium size parameters on page 2.
TECTUM® High NRC Square Lay-in	1 5340W2L02T10__	24 × 24 × 1" □
	15/16" Square Lay-in	5340W2L04T10__ 24 × 48 × 1" □

- ◆ When specifying or ordering, include the appropriate 3-digit color suffix: (e.g. 8184T10TNA – Lay-in Ceiling Panels - 24 × 24 × 1" in Natural)
- * Scratch-resistance is applicable to Natural and White panels only.
- ** 1-1/2" and 2" thicknesses require a back rabbet cut to make room for the suspension system; see diagram below.

PERFORMANCE

Dots represent high level of performance.

Fire Rating	Light Reflect	Bio-Block Mildew	Humi-Guard+ Sag Resist	CleanAssure™ Disinfectable Panels	Fog	Impact	Scratch*	30-Yr Warranty
Class A	Up to 0.75	*	*	*	*	*	*	*
Class A	Up to 0.75	*	*	*	*	*	*	*
Class A	Up to 0.75	*	*	*	*	*	*	*
Class A	Up to 0.75	*	*	*	*	*	*	*

ACOUSTICAL INFORMATION

Item No.	Infill Panel Item No.	NRC	CAC	Total Acoustics¹
8184T10__	N/A	0.40	N/A	N/A
8183T10__	N/A	0.40	N/A	N/A
5340W2L02T10__	N/A	0.85	N/A	N/A
5340W2L04T10__	N/A	0.85	N/A	N/A
8184T10__	1713	0.90	35	N/A
8183T10__	1713	0.90	35	N/A

¹ Total Acoustics® ceiling panels have an ideal combination of sound absorption and sound blocking in one product.

GOOD (NRC 0.60-0.65; CAC 35+)

BETTER (NRC 0.70-0.75; CAC 35+)

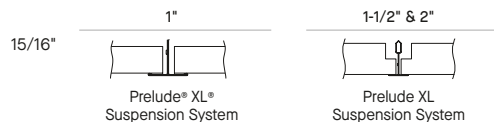
BEST (NRC 0.80+; CAC 35+)

ACOUSTICAL INFILL PANELS***

Item No.	Description	Dimensions	Color	PCS/CTN
1713	School Zone® Fine Fissured Lay-in Acoustical Panel	24 × 24 × 3/4"	White	12

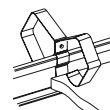
*** Infill panels only used for non-High NRC Items

SUSPENSION SYSTEMS



ACCESSORIES

Tectum Hold-down Clip – Attaches to main beams and cross tees behind lay-in ceilings; helps prevent panel displacement from non-deliberate contact and other forces from below.



8178T10 – 1" Panel Thickness
8178T20 – 1-1/2" Panel Thickness

PHYSICAL DATA

Material
Cementitious Wood Fiber

Surface Finish
Factory-applied latex paint on abuse-resistant silicate surface coating. Natural finish is unpainted, but after the coating is applied, panels may appear light in color.

Panels are painted on the edge, however due to fibrous texture of panels, certain angles and lighting conditions will make edge appear less or more painted.

Can be field painted up to 6 times without impacting acoustic or fire performance. See installation instructions for details on paint and application method.

Fire Performance
Class A per IBC. Flame Spread Index 25 or less and Smoke Developed Index 50 or less when tested in accordance with ASTM E84.

CAN/ULC S102 surface burning characteristics. Flame Spread Index of 25 or less and Smoke Developed Index of 50 or less.

VOC Emissions
Third-party certified compliant with California Department of Public Health CDPH/EHLB/Standard Method Version 1.2, 2017. This standard is the guideline for low emissions in LEED®, WELL Building Standard®, Living Building Challenge® (LBC), CalGreen Title 24, ANSI/ASHRAE/USGBC/IES Standard 189; ANSI/GBI Green Building Assessment Protocol.

Humidity/Sag Resistance
HumiGuard® Plus panels are recommended for areas subject to high humidity, up to, but not including, standing water and outdoor applications.

Anti-Mold/Mildew
Ceiling panels with BioBlock® performance resist the growth of mold and mildew on the panel surface.

Installation Considerations
Use caution and wear appropriate hand, eye, and dust mask protection when cutting and installing Tectum panels. Refer to installation instructions for complete details and cutting recommendations.

Primary (Embodied) Energy
See all LCA information on our EPDs.

Application Considerations
Color variation among panels is common due to the natural characteristics of the wood on White and Natural panels.

Wood fibers may appear orange on Natural colored panels due to the characteristics of the wood.

Low angle lighting exaggerates variation inherent to the manufacturing process and is not recommended for Tectum installations.

Design & Pre-Construction Service

For complimentary design and pre-construction assistance, contact ProjectWorks® or visit armstrongceilings.com/projectworks

Seismic Restraint

Tectum Lay-in panels are approved for application in all seismic areas when installed per Armstrong Ceilings Installation Instructions.

Cleaning and Disinfecting

Cleaning and CDC-recommended disinfecting options available on armstrongceilings.com/cleaning

Warranty

30-Year Performance Guarantee and Warranty when installed with Armstrong® Suspension System. Details at armstrongceilings.com/warranty

Weight; Square Feet/Carton

1" – 1.65 LBS/SF
1-1/2" – 2.53 LBS/SF
2" – 3.3 LBS/SF
8183T10 – 4 PCS/CTN
8184T10 – 8 PCS/CTN
5340W2L02T10 – 8 PCS/CTN
5340W2L04T10 – 4 PCS/CTN

LEED® is a registered trademark of the U.S. Green Building Council; Declare® and Living Building Challenge® (LBC) are trademarks of the International Living Future Institute®; WELL™ and WELL Building Standard® are trademarks of the International WELL Building Institute®; Revit® is a registered trademark of Autodesk, Inc.; FSC® is a registered trademark of Forest Stewardship Council®, A.C., license code FSC-C007626; UL® is a registered trademark of UL LLC; all other trademarks used herein are the property of AWI Licensing LLC and/or its affiliates © 2025 AWI Licensing LLC

TechLine / 877 276-7876
armstrongceilings.com/tectumlayin
BPCS-5615-1025

Armstrong®
World Industries