

SOUNDSCAPES® Shapes

Acoustical Clouds – Wood Looks
smooth texture

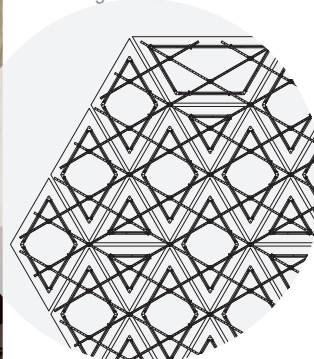


FAST134
Select Items Ship Fast
armstrongceilings.com/fast134

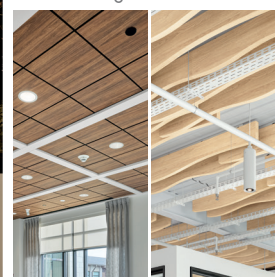


SoundScapes® Shapes trapezoid, parallelogram, and triangle wood-look panels in Toffee Chestnut (WTC)

CAD/Revit® drawings at:
armstrongceilings.com/cadrevit



Coordinating Wood Looks



Lyra® PB

SoundScapes®
Blades

Deliver acoustics in playful installations with angles, shapes, sizes, and wood-look visuals using our exclusive grouping frame kit to ensure alignment.

KEY SELECTION ATTRIBUTES

- new** Now available in 7 standard wood-look visuals
- Available in 9 standard shapes including triangles, trapezoids, and parallelograms
- Aesthetically define spaces with excellent sound absorption up to 1.15 NRC
- Quick to install from the deck, drywall, suspension system, or on a wall
- Grouping Frame Kit provides superior rigidity, perfect alignment, minimizes hanging points, ensures consistent panel spacing, and is engineered for use in DEF Seismic zones
- CleanAssure™ family of products – includes disinfectable panels, suspension systems, and trim
- Select products included in the FAST134 program – ready to ship in 4 weeks or less
- Adjustable to various heights and angles
- Mold- and mildew-resistant surface
- Seismic-tested
- ASTM E84 Class A Fire Performance

- Custom panel options available; 360° panel finishing capability
- Made in the U.S.A. of domestic and global content
- Build America, Buy America (BABA) Act compliant

FINISHES

new Wood-look Visuals



For premium and custom capabilities, contact ASQuote@armstrongceilings.com



*Nature-Inspired
Colors Available!*

SOUNDSCAPES® Shapes

Acoustical Clouds – Wood Looks
smooth texture

LEED® WELL LBC

energy management

construction waste mgmt

regional materials

design for flexibility

EPD

recyclable/ biobased materials

recycled content

sourcing of raw materials

material ingredient reporting

low emitting/ materials

lighting quality

acoustics

55% RECYCLED CONTENT

For LEED contribution contact TechLine

LOCATION DEPENDENT

VISUAL SELECTION

Item No. ♦	Description	Dimensions (D × L × Thickness)
SOUNDSCAPES® Shapes Clouds		
5440F04R01_ _ _	Square – 7/8" thick panel	3'-10" × 3'-10"
Panel options – 90 degrees When grouping 90-degree shapes with the 5453D090 Frame Alignment Kit, you cannot combine with 60-degree shapes. (shown in finished view from below ceiling)		
5443F04C01_ _ _	Circle – 7/8" thick panel	3'-10" diameter
5444F04G01_ _ _	Hexagon – 7/8" thick panel	3'-10" × 3'-13/16"
5445F04Z02_ _ _	Trapezoid – 7/8" thick panel	3'-10" × 3'-10" × 2'-10"
5448F04R02_ _ _	Small Rectangle – 7/8" thick panel	5'-10" × 3'-10"
5449F04R03_ _ _	Large Rectangle – 7/8" thick panel	7'-10" × 3'-10"
SOUNDSCAPES Shapes Clouds		
7101F04P01_ _ _	Parallelogram – 7/8" thick panel	5'-9" × 3'-4"
Panel options – 60 degrees When grouping 60-degree shapes with the 5453D060 Frame Alignment Kit, you cannot combine with 90-degree shapes.		
7101F04T01_ _ _	Triangle – 7/8" thick panel	3'-3" × 3'-9"
7101F04Z01_ _ _	Trapezoid – 7/8" thick panel	7'-9-1/2" × 3'-4"

FAST
4 WEEKS
or Less

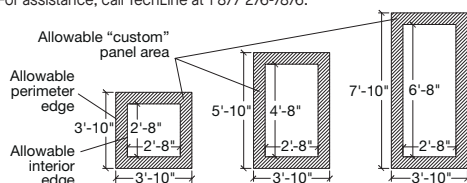
FAST134 program items ready to ship from manufacturer in 4 weeks or less.
Up-to-date lead times and product options (sizes and colors) at armstrongceilings.com/fast134

♦ Add 3-letter color suffix when specifying or ordering (e.g. 5440F04R01 W B S for square panel in Brown Sugar Walnut).
NOTE: 360° finishing available on all shapes offered as "Premium," contact ASQuote@armstrongceilings.com
* NRC value is dependent upon mounting method and spacing.

CUSTOM SHAPES

Create your own shapes!

For assistance, call TechLine at 1 877 276-7876.



TechLine 877 276-7876
armstrongceilings.com/soundscapesshapes

PERFORMANCE

Dots represent high level of performance.

Sound Absorption* NRC	Fire Rating	Anti-Mold/Mildew	Bio-Block	CleanAssure™ Disinfectable Panels
				Fog Spray
1.15	Class A	*	*	*
1.15	Class A	*	*	*
1.15	Class A	*	*	*
1.15	Class A	*	*	*
1.15	Class A	*	*	*
1.15	Class A	*	*	*
1.15	Class A	*	*	*
1.15	Class A	*	*	*
1.15	Class A	*	*	*
1.15	Class A	*	*	*
1.15	Class A	*	*	*

CLOUDS & CANOPIES – Standard

Armstrong®
World Industries

SOUNDSCAPES® Shapes

Acoustical Clouds – Wood Looks
smooth texture

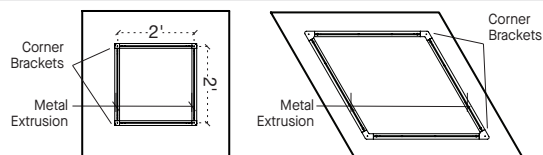
ACCESSORY KITS Applications always require more than one kit.

Item No. ♦	Description	Kit Contents	
5450L8CR	Deck Hanging Kit Allows for suspending individual shapes or grouping frames from deck and bottom end adjustment of height at panel or frame level.	(2) gripper structure anchors (2) gripper structure caps (2) 8' aircraft cables (2) bottom end cable adjusters (2) nuts with washers	
7121	Angled Hanging Kit (60° maximum angle)	(2) angled hanging cables	
625530	Extended Hanging Cables For use with deck hanging kit when longer cables are needed.	(4) 30' aircraft cables	
7006	Escutcheon Kit Used when hanging panels below an existing ceiling.	(2) collars with setscrews (2) 2" escutcheons	
5451 _ _	Grouping Frame Kit - Black or White Suspension frames used to group panels together.	(4) suspension frames, 12' long, Black (BL) or White (WH)	
5452 _ _	Frame Splice Kit - Black or White Connects group suspension frames for longer runs (> 12 feet).	(2) group frame connectors, 10" long, Black (BL) or White (WH) (4) bolts with washers (4) nuts	
5453D060 5453D090	Frame Alignment Kit (60°) Frame Alignment Kit (90°) For use with group suspension frames.	(4) frame alignment spacers, clear plastic (4) bolts (4) nuts with washers	
5454 _ _	Panel Hook Kit - Black or White For use with group frames (one kit per all panels except item 5449, Large Rectangle, which requires two kits).	(2) 4-1/2" high panel hooks, Black (BL) or White (WH) (2) 3-1/2" high panel hooks, Black (BL) or White (WH) (8) bolts	
5629 5630 5631	Multi-plane Hanging Kits - Black only For use when hanging panels at heights below Panel Hook Kit (5454).	5629 1" Drop Hook Kit (2) 4-1/2" hooks (2) 5-1/2" hooks (8) screws 5630 2" Drop Hook Kit (2) 5-1/2" hooks (2) 6-1/2" hooks (8) screws 5631 3" Drop Hook Kit (2) 6-1/2" hooks (2) 7-1/2" hooks (8) screws	
5455	Drywall Ceiling Hanging Kit For individual panel attachment to structure.	(2) drywall clip assemblies (2) shoulder bolts	
5588	Wall Hanging Kit For individual panel attachment to a wall.	(4) clip assemblies (4) shoulder bolts	
5632	Grid Hook Kit For hanging individual panels from an Armstrong standard suspension system.	(4) hooks (8) screws	

NOTE: Accessory kit hardware is attached to panels via the metal extrusion or corner brackets on the back of each panel. The diagram on the right shows the location of extrusions and corner brackets in the back of a nominal 4' x 4' panel. See installation instructions BPLA-297302 for more details.

If you need assistance identifying what and how many accessory kits are needed for your project, please contact TechLine customer support at 1 877 276-7876.

♦ Indicate desired color using two-digit color code when ordering (e.g. 5451 W H)



TechLine 877 276-7876

armstrongceilings.com/soundscapesshapes

Armstrong®
World Industries

SOUNDSCAPES® Shapes

Acoustical Clouds – Wood Looks
smooth texture

HUNDREDS OF WAYS TO CONFIGURE SOUNDSCAPES® SHAPES PANELS

Individual Suspension



Items 5449F02R03 in White

Individual Attachment to Drywall or Solid Surface

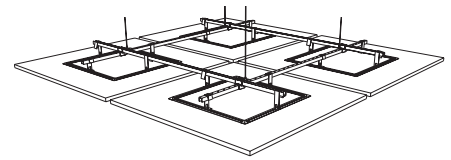
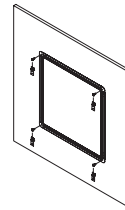
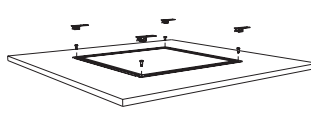
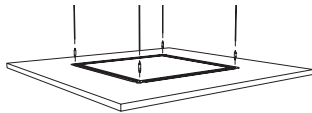


Items 5444F02G01 in White

Group Suspension



Items 7101F02T01 and 7101F02P01 in White and custom colors



ACCESSORY KITS All accessory kits are ordered separately.

Deck Hanging Kit (5450L8CR)

Drywall Hanging Kit (5455)
Wall Hanging Kit (5588)

Deck Hanging Kit (5450L8CR)
Grouping Frame Kit (5451 _ _)
Frame Alignment Kit (5453D090)
Panel Hook Kit (5454 _ _)



Visit our online pattern gallery at armstrongceilings.com/patterngallery
View layouts, gain inspiration and access drawings complete with bill of materials!

PHYSICAL DATA

Material

7/8" thick fiberglass with acoustically transparent membrane on face and sides.

Surface Finish

Acoustically transparent membrane. Back of panel is unfinished with embedded metal extrusions.

Fire Performance

SoundScapes® Shapes panel material is ASTM E84 Class A: Flame Spread 25 or under and Smoke Developed 50 or less.

CAN/ULC S102 surface burning characteristics.

Flame Spread Rating 25 or less.
Smoke Developed Classification 50 or less.

SoundScapes Shapes acoustical clouds, as with other architectural features located in the ceiling plane, may obstruct or skew the existing or planned fire sprinkler water distribution pattern, or possibly delay the activation of the fire sprinkler or fire detection system. Consult a fire protection engineer, NFPA 13, and local codes for guidance on the proper installation techniques where fire detection or suppression systems are present.

ASTM E1264 Classification

Type XII, Form 2, Pattern E

High Recycled Content

Contains greater than 50% total recycled content. Total recycled content based on product composition of post-consumer and pre-consumer (post-industrial) recycled content per FTC guidelines.

Design & Pre-Construction Service

For complimentary design and pre-construction assistance, contact ProjectWorks® or visit armstrongceilings.com/projectworks

Design Considerations

SoundScapes Shapes acoustical clouds maintain a natural sag that may be noticeable when installed 6" or less apart. Minimal deflection may occur.

SoundScapes Shapes available with 360° finishing for use in areas where panel back is exposed (can only be installed with included individual suspension).

Special care in installation and handling must be taken with wood-look shapes to avoid surface damage. Not recommended for use in high-traffic or high-impact areas.

Custom shapes are available by providing a custom shape drawing within guidelines and sending to TechLine.

Call 1 877 276-7876 for assistance.

Seismic Restraint

Refer to ASCE 7-10, Section 13.5 Architectural Components for seismic requirements. Section 13.5, Item 2 refers to 13.2.3 Consequential Damage.

Suspension Systems

SoundScapes Shapes acoustical clouds are pre-assembled with metal extrusions in the back of the panels. Standard accessory kits facilitate quick and easy installation from the deck, through a ceiling, or directly attached to drywall. See Installation Instructions BPLA-297302 for installation details.

FAST134 Program Considerations

Size of Job Matters: Big jobs, over 2500 SF or 50 pieces for shapes/vertical elements will have longer lead times.

Location Matters: Transit time not included. We are ready to ship in 1 week on FAST1 items. However, transit to the states west of Wyoming may add time.

Distributor Truck Schedule Matters: We rely on distribution to help move products around the country. When speed matters, work with your local distributor to ensure FAST134 service.

Stock vs. Made-to-Order Matters: FAST3 & FAST4 items are made-to-order and will ship direct to distributor. FAST1 (stocked items) will go through distribution and depend on distributor truck schedules.

Warranty

Details at armstrongceilings.com/warranty

Panel Weight & Pieces/Carton

5440F04R01 - 9.3 Lbs/Pc; 4 Pcs/Ctn
5443F04C01 - 9.3 Lbs/Pc; 4 Pcs/Ctn
5444F04G01 - 8.1 Lbs/Pc; 4 Pcs/Ctn
5445F04Z02 - 9.3 Lbs/Pc; 4 Pcs/Ctn
5448F04R02 - 14.1 Lbs/Pc; 2 Pcs/Ctn
5449F04R03 - 18.9 Lbs/Pc; 2 Pcs/Ctn
7101F04P01 - 11.1 Lbs/Pc; 2 Pcs/Ctn
7101F04T01 - 5.6 Lbs/Pc; 4 Pcs/Ctn
7101F04Z01 - 16.4 Lbs/Pc; 2 Pcs/Ctn

Minimum Order Quantity
1 piece