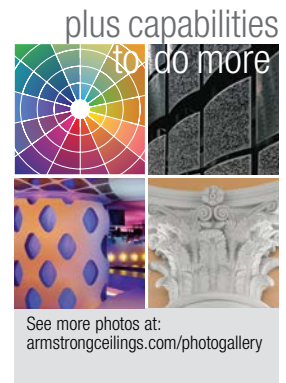
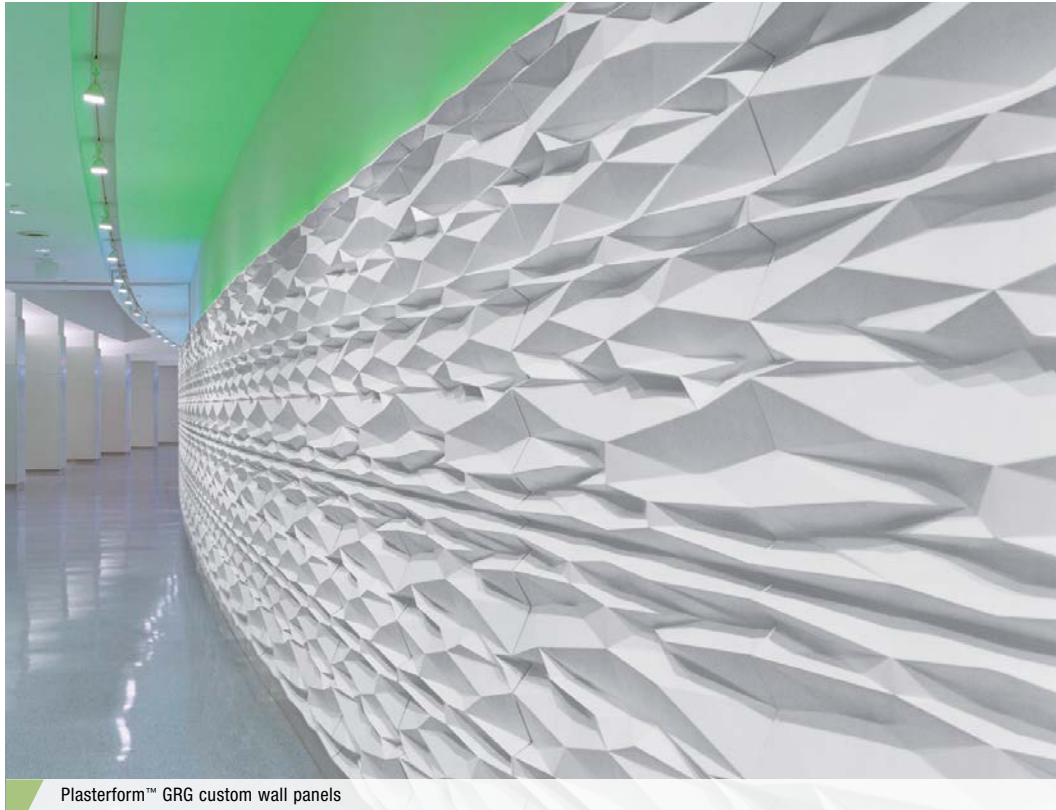


PLASTERFORM™ GRG

Glass Fiber Reinforced Gypsum



Plasterform™ GRG is an ideal interior application that's an economical, lightweight, and durable replacement for traditional plaster.

KEY SELECTION ATTRIBUTES

- Cast into any shape or compound curve
- Replicate the look of natural materials at a lower cost
- Weighs only 2-3 lbs. per square foot
- Easy to install
- Low maintenance
- Density can be increased to accommodate acoustic needs
- Sets fast; can reduce construction schedules
- Durable
- Interior use

TYPICAL APPLICATIONS

- Ceiling and Wall Panels
- Coffers
- Columns
- Domes
- Light Coves
- Vaults
- Moldings
- Sound Diffusion

COLORS GRG castings can be field painted to achieve any desired color or texture.



Custom Colors
Available

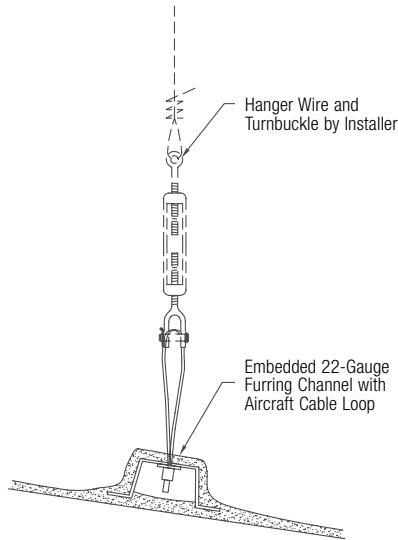
PLASTERFORM™ GRG

Glass Fiber Reinforced Gypsum

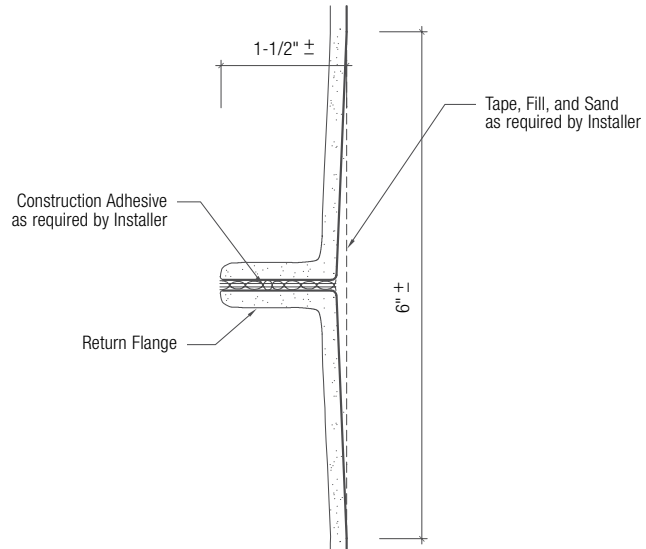
LEED®	energy management	construction waste to recycle	regional materials	design for flexibility	EPD	recyclable/extended producer resp.	biobased materials	recycled content	sourcing of raw materials	material ingredient reporting	low emitting materials	lighting quality	acoustics
-------	-------------------	-------------------------------	--------------------	------------------------	-----	------------------------------------	--------------------	------------------	---------------------------	-------------------------------	------------------------	------------------	-----------

▲ LOCATION DEPENDENT

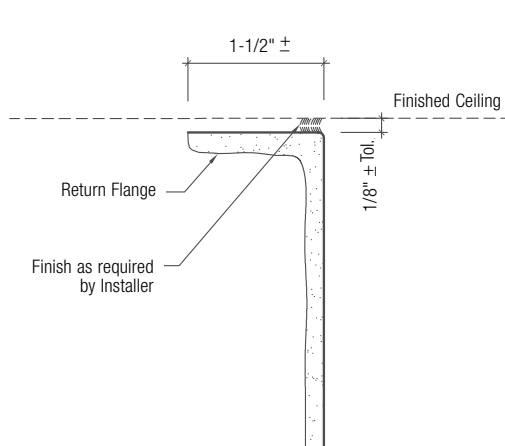
DETAIL DRAWINGS



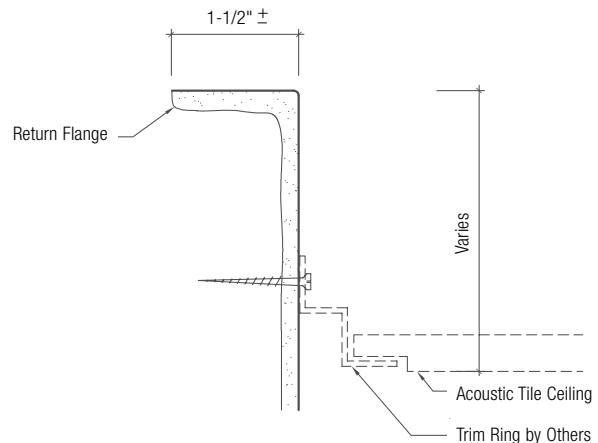
GRG HANGER DETAIL



GRG COLUMN HORIZONTAL STACKING DETAIL



GRG COLUMN SECTION AT DRYWALL CEILING



GRG COLUMN SECTION AT ACOUSTIC TILE CEILING

PHYSICAL DATA

Material

Glass Fiber Reinforced Gypsum is a composite consisting of alpha gypsum cement and water, reinforced with glass fibers. Complies with ASTM C-1355/C-1355M and ASTM C-1381.

Surface Finish

Standard unfinished, paint grade. Can be coated to achieve any desired color and texture.

Fire Performance

Class A Fire Performance per ASTM E84.

Installation Considerations

Install Plasterform™ GRG parts as indicated on approved shop drawings, other recommendations, and the contract requirements. Comply with ASTM Standard C1467 for the installation of GRG.

Use caution and wear appropriate hand, eye, and dust mask protection when handling Plasterform GRG. Refer to installation instructions for complete details.

Application Considerations

In addition to decorative purposes, Plasterform GRG can be used for lighting and acoustic purposes. Its standard thickness is 3/16", but can be customized to 1/2" or 3/4" to achieve a desired reverberation.

Design Support

Project management assistance is available by calling TechLine at 1 877 276-7876.

Warranty

One (1) Year Limited Warranty. Details at armstrongceilings.com

Weight

2-3 lbs/SF (may vary depending on part design)