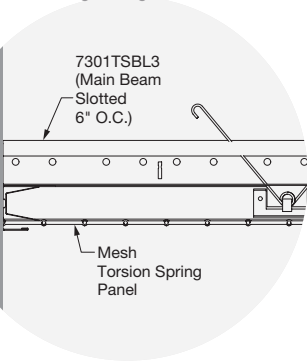


METALWORKS™ Mesh Torsion Spring



CAD/Revit® drawings at:
armstrongceilings.com/cadrevit



MetalWorks Mesh Torsion Spring 24" × 48", 1Cell woven panels in Silver Grey; FeltWorks® wall panels in Light Grey, Dark Grey, and Beige

MetalWorks™ Mesh Torsion Spring panels offer an industrial look with minimized grid visibility and 100% swing-down accessibility.

KEY SELECTION ATTRIBUTES

- Popular Torsion Spring installation method now standard in 24" × 24" and 24" × 48" woven mesh
- Slotted grid Torsion Spring installation minimizes grid visibility by hiding the grid above the panel face
- Woven patterns offer over 75% open area, enabling sprinklers to be installed above the panel face, minimizing disruption of the ceiling plan with MEP
- CleanAssure™ family of products – includes disinfectable panels, suspension systems, and trim
- Black acoustical infill panels provide high sound absorption and help conceal elements in the plenum
- For custom options contact ASQuote@armstrongceilings.com

MESH FINISHES Due to printing limitations, shade may vary from actual product.

Powder Coated



White
(WH)



Silver Grey
(SG)



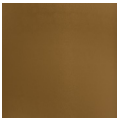
Nickel Chrome
(NC)



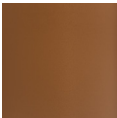
Gun Metal
Grey (MY)



Tech Black
(BL)



Bronze
(BZ)



Copper
(CP)



Custom Colors
Available

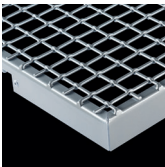
COORDINATING SUSPENSION SYSTEM COLORS



Black (BL3)
360° Painted

Mesh patterns leave suspension system visible.
Black 360° grid is recommended for blending with grid and plenum.

WOVEN DETAIL



METALWORKS™ Mesh Torsion Spring

RECYCLED
CONTENT

LEED V5

UP TO
85%

COMMON MATERIALS FRAMEWORK

Human Health **Declare Label**

Climate Health

EPD

HPD

Ecosystem Health

EPD

3rd Party CDPH

Circular Economy

✓

OCCUPANT EXPERIENCE

Acoustics

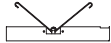
✓

VISUAL SELECTION

new

METALWORKS™
Mesh Torsion
Spring

Interior Panels
Square 15/16"



Item No. ◆	Description	Panel Dimensions W × L × H (Inches)
5433W24L24D01_ _	1Cell	24 × 24 × 1-7/16"
5433W24L48D01_ _	1Cell	24 × 48 × 1-7/16"
5433W24L24D02_ _	2Cell	24 × 24 × 1-7/16"
5433W24L48D02_ _	2Cell	24 × 48 × 1-7/16"

◆ When specifying or ordering, include the appropriate 2-letter color suffix with the item number (e.g., 5433W24L24D01 S G).

PERFORMANCE

Dots represent high
level of performance.

% Open Area	Fire Rating	CleanAssure™ Disinfectable Panels		
		Fog	Spray	Wipe
76%	Class A	*	*	*
76%	Class A	*	*	*
82%	Class A	*	*	*
82%	Class A	*	*	*

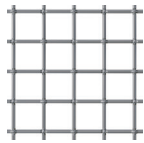
ACOUSTICAL INFORMATION

Patterns with similar open area will achieve similar acoustic results.

% Open Area	Infill Panel Item No.	Dimensions	NRC
76% & 82% Open Area	5823	24" × 24"	0.75
	1713BL	24" × 24"	0.70
	2820BK	24" × 24"	0.85
	2821BK	24" × 48"	0.85

WOVEN WIRE (1:6 scale shown)

Square Weave

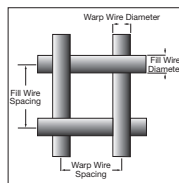


1Cell (D01)
Item 5433
Spacing: 0.86" × 0.86"
Wire Diameter: 0.11"
% Open Area: 76%



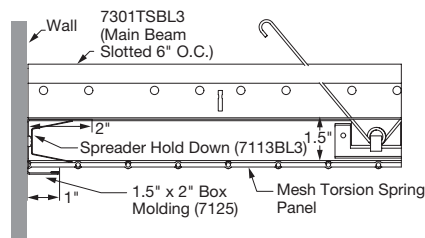
2Cell (D02)
Item 5433
Spacing: 1.52" × 1.52"
Wire Diameter: 0.135"
% Open Area: 82%

Wire Key



INTERIOR WALL PERIMETER DETAILS

Installation Detail – Wall Perimeter



SUSPENSION SYSTEM & ACCESSORIES

Item No.	Description	Color	Dimensions (Inches) Nominal W × L × H	Pieces/ Carton
7301TSBL3	Prelude® XL® 12' HD Main Beam – Slotted	BL3	15/16 × 144 × 1-11/16"	20
XL8320BL3	Prelude XL 2' Cross Tee	BL3	15/16 × 24 × 1-11/16"	60
7125BL3	Box Molding	BL3	2 × 96 × 1-1/2"	10
7113BL3	Spreaders Hold-Down	BL3	1 × 10-5/8 × 1"	40

NOTE: Axiom® Classic Trim is recommended for cloud configurations.

PHYSICAL DATA

Material
Cold-rolled steel.

Surface Finish

All panels are available in a range of standard and custom, factory-applied, powder-coated finishes.

Fire Performance

Class A: ASTM E84 and CAN/ULC S102. Flame Spread Index 25 or less. Smoke Developed Index 50 or less.

All MetalWorks Mesh panels are non-combustible.

As with other architectural features located at the ceiling, Mesh panels may obstruct or skew the planned fire sprinkler water distribution pattern, or possibly delay or accelerate the activation of the sprinkler or fire detection systems by channeling the heat from a fire either toward or away from the device.

Designers and installers are advised to consult a fire protection engineer, NFPA 13, and local codes for guidance where automatic fire detection and suppression systems are present.

Acoustics Considerations

NRC-tested using infill panels. Painted panels may experience a slight reduction in NRC due to color painting processes.

Design Considerations

Panels align best when installed next to panels of the same size. Reveal between panels can vary.

Black 360° grid minimizes grid visibility. Axiom trim colors coordinate but are not an exact match.

Minimal deflection is expected as panels increase in size. It is possible to see up to 1/2" deflection.

Installation Considerations

For custom design assistance contact
ASQuote@armstrongceilings.com

Use caution and wear appropriate hand and eye protection when installing or cutting these metal panels. Refer to Installation Instructions BPLA-293095 at armstrongceilings.com/metalworks for details and cutting recommendations.

Cleaning and Disinfecting

Cleaning and CDC-approved disinfecting options available on armstrongceilings.com/cleaning

Warranty

Details at armstrongceilings.com/warranty

Weight/Panel (Bulk Packed)

5433W24L24D01 – 6.8 lbs/pc

5433W24L48D01 – 12 lbs/pc

5433W24L24D02 – 5.6 lbs/pc

5433W24L48D02 – 9.8 lbs/pc

Minimum Order Quantity

500 SF

TechLine / 1 877 276-7876
armstrongceilings.com/mesh
BPCS-6695-925

LEED® is a registered trademark of the U.S. Green Building Council; Living Building Challenge® (LBC) is a registered trademark of the International Living Future Institute; WELL™ and WELL Building Standard™ are trademarks of the International WELL Building Institute; Revit® is a registered trademark of Autodesk, Inc.; all other trademarks used herein are the property of AWI Licensing LLC and/or its affiliates © 2025 AWI Licensing LLC

Armstrong®
World Industries

METALWORKS™ – Standard