

METALWORKS™ Mesh

Lay-in & Tegular
smooth texture

*Custom Looks
with Standard
Products*



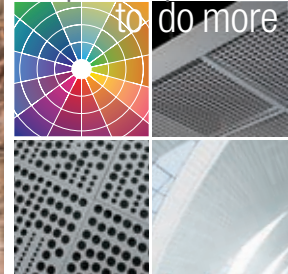
**24/7
DEFEND™**
Solutions for Healthier,
Safer Spaces

CONTAIN CLEAN PROTECT

CAD/Revit® drawings at:
armstrongceilings.com/cadrevit



plus capabilities
to do more



▲ MetalWorks™ Mesh Trellis 24" x 48", 24" x 72", and 24" x 96" panels; Lattice 24" x 48", 24" x 72", and 24" x 96" panels; and Scallops 24" X 24" panels

armstrongceilings.com/capabilities
See more photos at:
armstrongceilings.com/photogallery

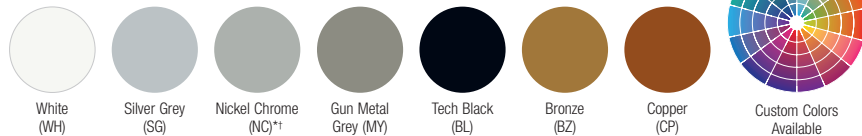
MetalWorks™ Mesh panels provide an industrial look for interior spaces in a variety of sizes, patterns, and finishes.

KEY SELECTION ATTRIBUTES

- new** Large format 24" x 48", 24" x 72", and 24" x 96" lay-in ceiling panels now available as standard items in select patterns
- Thirty-two standard patterns on 24" x 24" ceiling panels, custom patterns and colors also available
- new** CleanAssure™ family of products – includes disinfectable panels, suspension systems, and trim
- new** Select products included in the FAST134 program – ready to ship in 4 weeks or less
- Simple installation – panels lay in standard 15/16" suspension system with borders or finished edges
- Factory-engineered border around panel edges for safe, fast installation into grid system
- Black acoustical infill panels provide high sound absorption and help conceal elements in the plenum
- For custom options contact ASQuote, asquote@armstrongceilings.com

MESH FINISHES

Powder Coated

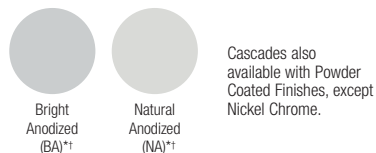


Due to printing limitations, shade may vary from actual product.

* Only available on 24" x 24" panels

† Not available as a coordinating suspension system color

Anodized for Cascades



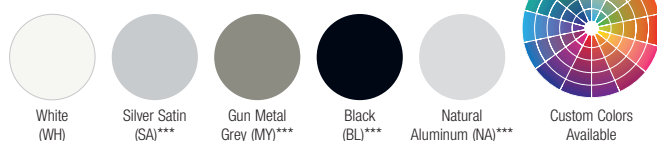
Cascades also available with Powder Coated Finishes, except Nickel Chrome.

Plated Antique Nickel



Antique Nickel finish reflects the light with a beautiful true metallic finish. Not available on Expanded Metal or Cascades. Finish will have shade variation depending on viewing angle. Black grid recommended.

COORDINATING SUSPENSION SYSTEM COLORS



NOTE: Accessories and clips (such as BERC2 clip) can be specified to color match the suspension system.

*** Not available as a standard option.

Mesh patterns leave suspension system visible.
When mill-finish steel is not a desired look, request 360-painted grid.

METALWORKS™ Mesh

Lay-in & Tegular
smooth texture

LEED® WELL™ LBC

UP TO **85% RECYCLED CONTENT**

energy management
construction waste mgmt
regional materials
design for flexibility
EPD
recyclable/producer resp.
biobased materials
recycled content
sourcing of raw materials
material ingredient reporting
low emitting materials
lighting quality
acoustics

Calculate sustainability with GreenGenie™
armstrongceilings.com/greengenie

LOCATION DEPENDENT

WITH INFILL PANEL

WOVEN WIRE (1:6 scale shown)

Square Weave – Square Lay-in



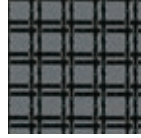
1Cell
Item 6415AM
Spacing: 0.86" x 0.86"
Wire Diameter: 0.11"
% Open Area: 76%



2Cell
Item 6416AM
Spacing: 1.39" x 1.39"
Wire Diameter: 0.135"
% Open Area: 82%



Twin Round Narrow
Item 6129AM
Spacing: 0.25"/0.57"/
0.25"/0.57"
Wire Diameter: 0.80"
% Open Area: 61%



Twin Flat Narrow
Item 6412AM
Spacing: 0.25"/0.75"/
0.25"/0.75"
Wire Diameter: 0.92"
% Open Area: 53%



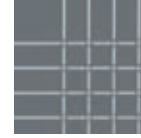
Twin Flat Wide
Item 6410AM
Spacing: 0.75"/2.25"/
0.75"/2.25"
Wire Diameter: 0.375" x 0.60"
% Open Area: 56%



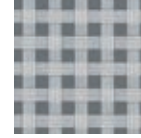
Single Flat Narrow
Item 6411AM
Spacing: 0.25" x 0.25"
Wire Diameter: 0.92"
% Open Area: 21%



Single Flat Wide
Item 8199AM
Wire Dimension: 0.375" x 0.60"
% Open Area: 51%



Quad Round Narrow
Item 8198AM
Wire Diameter: 0.135"
% Open Area: 77%



Over-Under Square
Item 8200AM
Wire Dimension: 0.250" x 0.063"
% Open Area: 34%

Linear Weave – Square Lay-in



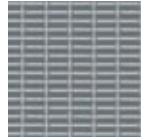
Single Mini
Item 6413AM
Spacing: 0.32" x 0.32"
Wire Diameter: 0.63"
% Open Area: 57%



Single Narrow
Item 6414AM
Spacing: 0.105"
Wire Diameter: 1.105"
% Open Area: 52%

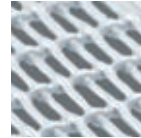


Triple Narrow
Item 6128AM
Spacing: 3.15" x 3.15"
Wire Diameter: 0.12"
% Open Area: 62%



Fine Rectangular
Item 8203AM
Wire Dimension: 0.80"
% Open Area: 47%

Linear Weave – Tegular



Fine Rectangular
Item 8195AM
Wire Diameter: 0.80"
% Open Area: 47%

Diamond Weave – Square Lay-in

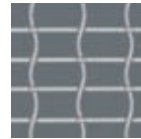


1Diamond
Item 6417AM
Spacing: 0.86" x 0.86"
Wire Diameter: 0.11"
% Open Area: 76%

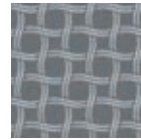


2Diamond
Item 6418AM
Spacing: 1.33" x 1.33"
Wire Diameter: 0.14"
% Open Area: 82%

Round Weave – Square Lay-in

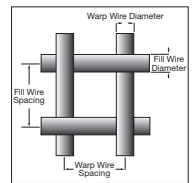


Round Rectangular
Item 8201AM
Wire Diameter: 0.105"
% Open Area: 75%



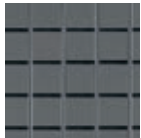
Twin Circle
Item 8202AM
Wire Diameter: 0.80"
% Open Area: 41%

Wire Key

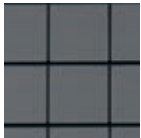


WELDED WIRE (Actual 1:6 scale shown)

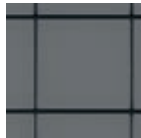
Welded Wire – Square Lay-in



1Cell
Item 6131AM
Spacing: 1.0" x 1.0"
Wire Diameter: 0.120"
% Open Area: 76%

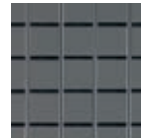


2Cell
Item 6132AM
Spacing: 2.0" x 2.0"
Wire Diameter: 0.120"
% Open Area: 88%



3Cell
Item 6133AM
Spacing: 3.0" x 3.0"
Wire Diameter: 0.120"
% Open Area: 92%

Welded Wire – Tegular



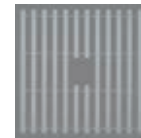
1Cell
Item 8190AM
Wire Diameter: 0.120"/.312"
Tegular Edge Rod
% Open Area: 78%



2Cell
Item 8191AM
Wire Diameter: 0.120"/.312"
Tegular Edge Rod
% Open Area: 88%



Linear Channel
Item 8196AM
Wire Diameter: 0.192"
Wire Dimension: 0.044" Channel
% Open Area: 50%



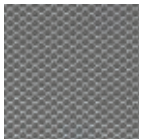
Linear Channel with Center Hole
Item 8197AM
Wire Diameter: 0.192"
Wire Dimension: 0.044" Channel
% Open Area: 60%

EXPANDED METAL (Actual 1:6 scale shown)

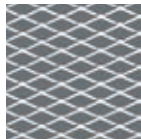
Expanded Metal – Square Lay-in



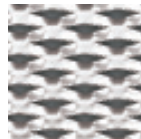
Lattice
Item 6136AM
Spacing: 0.036"
% Open Area: 73%
SWD 0.250"
LWD 0.500"



Scallops
Item 6137AM
Spacing: 0.048"
% Open Area: 61%
SWD 0.295"
LWD 0.394"



Trellis
Item 6138AM
Spacing: 0.060"
% Open Area: 70%
SWD 0.515"
LWD 1.200"

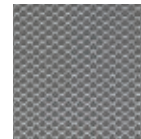


Cascades
Item 6139AM
Spacing: 0.080"
% Open Area: 23%
SWD 0.950"
LWD 2.000"

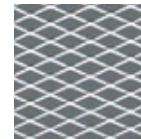
Expanded Metal – Tegular



Lattice
Item 8192AM
Wire Diameter: N/A
% Open Area: 73%

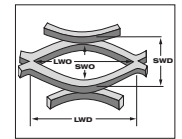


Scallops
Item 8193AM
Wire Diameter: N/A
% Open Area: 61%



Trellis
Item 8194AM
Wire Diameter: N/A
% Open Area: 70%

Expanded Metal Key



SWD – Short Way of Design
LWD – Long Way of Design

For detailed pattern information including spacing wire diameters and open area, refer to the MetalWorks™ Mesh brochure.

METALWORKS™ Mesh

Lay-in & Tegular
smooth texture

LEED WELL™ LBC
UP TO **85% RECYCLED CONTENT**

- energy management
- construction waste mgmt
- regional materials
- design for flexibility
- EPD
- recyclable/extended producer resp.
- biobased materials
- recycled content
- sourcing of raw materials
- material ingredient reporting
- low emitting materials
- lighting quality
- acoustics

Calculate sustainability with GreenGenie™
armstrongceilings.com/greengenie

VISUAL SELECTION

	Item No. ♦	Description	Panel Interior Opening Dimensions W x L x H (Inches)
WOVEN WIRE Square Weave Square Lay-in	6129AM __	Twin Round Narrow	24 x 24 x 1/4"
	6410AM __	Twin Flat Wide	24 x 24 x 1/4"
	6411AM __	Single Flat Narrow	24 x 24 x 1/4"
	6412AM __	Twin Flat Narrow	24 x 24 x 1/4"
	6415W24L24 __	1Cell	24 x 24 x 1/4"
	new 6415W24L48 __	1Cell	24 x 48 x 1/4"
	new 6415W24L72 __	1Cell	24 x 72 x 1/4"
	new 6415W24L96 __	1Cell	24 x 96 x 1/4"
	6416W24L24 __	2Cell	24 x 24 x 1/4"
	new 6416W24L48 __	2Cell	24 x 48 x 1/4"
	new 6416W24L72 __	2Cell	24 x 72 x 1/4"
	new 6416W24L96 __	2Cell	24 x 96 x 1/4"
Linear Weave Square Lay-in	8199AM __	Single Flat Wide	24 x 24 x 1/4"
	8198AM __	Quad Round Narrow	24 x 24 x 1/4"
	8200AM __	Over-Under Square	24 x 24 x 1/4"
	6413AM __	Single Mini	24 x 24 x 1/4"
	6414AM __	Single Narrow	24 x 24 x 1/4"
Linear Weave Square Tegular	6128AM __	Triple Narrow	24 x 24 x 1/4"
	8203AM __	Fine Rectangular	24 x 24 x 1/4"
	8195AM __	Fine Rectangular	24 x 24 x 1/4"
Diamond Weave Square Lay-in	6417AM __	1Diamond	24 x 24 x 1/4"
	6418AM __	2Diamond	24 x 24 x 1/4"
Round Weave Square Lay-in	8201AM __	Round Rectangular	24 x 24 x 1/4"
	8202AM __	Twin Circle	24 x 24 x 1/4"
EXPANDED METAL Square Lay-in	6136W24L24 __	Lattice	24 x 24 x 1/4"
	new 6136W24L48 __	Lattice	24 x 48 x 1/4"
	new 6136W24L72 __	Lattice	24 x 72 x 1/4"
	new 6136W24L96 __	Lattice	24 x 96 x 1/4"
	6137AM __	Scallops	24 x 24 x 1/4"
	6138W24L24 __	Trellis	24 x 24 x 1/4"
	new 6138W24L48 __	Trellis	24 x 48 x 1/4"
	new 6138W24L72 __	Trellis	24 x 72 x 1/4"
	new 6138W24L96 __	Trellis	24 x 96 x 1/4"
	6139AM __	Cascades	24 x 24 x 1/4"
Square Tegular	8192AM __	Lattice	24 x 24 x 1/4"
	8193AM __	Scallops	24 x 24 x 1/4"
	8194AM __	Trellis	24 x 24 x 1/4"

PERFORMANCE

Dots represent high level of performance.

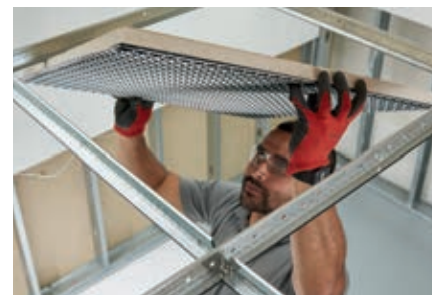
% Open Area	Fire Rating	CleanAssure™ Disinfectable Panels		
		Fog	Spray	Wipe
61%	Class A	•	•	•
56%	Class A	•	•	•
21%	Class A	•	•	•
53%	Class A	•	•	•
76%	Class A	•	•	•
76%	Class A	•	•	•
76%	Class A	•	•	•
76%	Class A	•	•	•
82%	Class A	•	•	•
82%	Class A	•	•	•
82%	Class A	•	•	•
82%	Class A	•	•	•
51%	Class A	•	•	•
77%	Class A	•	•	•
34%	Class A	•	•	•
57%	Class A	•	•	•
52%	Class A	•	•	•
62%	Class A	•	•	•
47%	Class A	•	•	•
47%	Class A	•	•	•
76%	Class A	•	•	•
82%	Class A	•	•	•
75%	Class A	•	•	•
41%	Class A	•	•	•
73%	Class A	•	•	•
73%	Class A	•	•	•
73%	Class A	•	•	•
73%	Class A	•	•	•
61%	Class A	•	•	•
70%	Class A	•	•	•
70%	Class A	•	•	•
70%	Class A	•	•	•
70%	Class A	•	•	•
23%	Class A	•	•	•
73%	Class A	•	•	•
61%	Class A	•	•	•
70%	Class A	•	•	•

ACOUSTICAL INFORMATION

Patterns with similar open area will achieve similar acoustic results.

% Open Area	Infill Panel Item No.	Dimensions	NRC
21% Open Area	5823	24 x 24"	0.75
	1713BL	24 x 24"	0.70
	2820BK	24 x 24"	0.85
	2821BK	24 x 48"	0.85
53% Open Area	2864BK	24 x 72"	0.85
	5823	24 x 24"	0.75
	1713BL	24 x 24"	0.70
	2820BK	24 x 24"	0.85
76% Open Area	2821BK	24 x 48"	0.85
	2864BK	24 x 72"	0.85
	5823	24 x 24"	0.75
	1713BL	24 x 24"	0.70
82% Open Area	2820BK	24 x 24"	0.85
	2821BK	24 x 48"	0.85
	2864BK	24 x 72"	0.85
	2820BK	24 x 24"	0.85

ACOUSTICAL PANEL INSTALLATION



MetalWorks™ Mesh ceiling panel with Calla® 2820BK infill panel for high NRC performance

♦ When specifying or ordering, include the appropriate 2-letter color suffix with the item number (e.g., 6129AM S G).



METALWORKS™ – Standard

METALWORKS™ Mesh









Lay-in & Tegular
smooth texture

LEED® WELL™ LBC
UP TO 85% RECYCLED CONTENT
Calculate sustainability with GreenGenie™
armstrongceilings.com/greengenie

energy management construction waste mgmt regional materials design for flexibility EPD recyclable/excise producer resp. biobased materials recycled content sourcing of raw materials material ingredient reporting low emitting materials lighting quality acoustics

LOCATION DEPENDENT WITH INFILL PANEL

VISUAL SELECTION

	Item No. ♦	Description	Panel Interior Opening Dimensions W x L x H (Inches)
WELDED WIRE Square Lay-in 	6131W24L24__	1Cell	24 x 24 x 1/4"
	 6131W24L48__	1Cell	24 x 48 x 1/4"
	 6131W24L72__	1Cell	24 x 72 x 1/4"
	 6131W24L96__	1Cell	24 x 96 x 1/4"
	6132W24L24__	2Cell	24 x 24 x 1/4"
	 6132W24L48__	2Cell	24 x 48 x 1/4"
	 6132W24L72__	2Cell	24 x 72 x 1/4"
	 6132W24L96__	2Cell	24 x 96 x 1/4"
	6133AM__	3Cell	24 x 24 x 1/4"
	Square Tegular 	8190AM__	1Cell
8191AM__		2Cell	24 x 24 x 1/4"
8196AM__		Linear Channeled	24 x 24 x 1/4"
8197AM__		Linear Channeled – Center Hole	24 x 24 x 1/4"

FAST
4 WEEKS
or Less

FAST134 program items ready to ship from manufacturer in 4 weeks or less.
Up-to-date lead times and product options (sizes and colors) at armstrongceilings.com/fast134.

♦ When specifying or ordering, include the appropriate 2-letter color suffix with the item number (e.g., 6129AM S Q).
SWD = Short way of design LWD = Long way of design
NOTE: For acoustical infill panel information, see armstrongceilings.com/mwaccessories

SUSPENSION SYSTEMS



PHYSICAL DATA

Material

All items, except Cascades panels, are cold-rolled steel. Cascades panels are made of aluminum.

Surface Finish

All panels are available in a range of standard and custom smooth, factory-applied powder-coated finishes. Most panels can also be plated for an Antique Nickel finish which will have a variable patina for an authentic aged visual. The anodized finishes (BA, NA) are available on Cascades panels only.

Fire Performance

Class A: ASTM E84 and CAN/ULC S102. Flame Spread Index 25 or less. Smoke Developed Index 50 or less.

All MetalWorks™ Mesh panels are non-combustible.

As with other architectural features located at the ceiling, Mesh panels may obstruct or skew the planned fire sprinkler water distribution pattern, or possibly delay or accelerate the activation of the sprinkler or fire detection systems by channeling the heat from a fire either toward or away from the device.

For panels that do not meet the criteria for open-suspension a 24" x 24" mineral fiber panel should be placed on the back of the Mesh panel when installing the ceiling, with the sprinkler installed below both panels.

Designers and installers are advised to consult a fire protection engineer, NFPA 13, and local codes for guidance where automatic fire detection and suppression systems are present.

Acoustics Considerations

NRC-tested using white infill panels. Painted panels may experience a slight reduction in NRC due to color painting processes.

Design Considerations

Minimal deflection is expected as panels increase in size. It is possible to see up to 1/2" deflection on Welded and Woven patterns. Panels in Expanded patterns may show additional deflection, resulting in an enhanced industrial visual.

For more open MetalWorks™ Mesh items where the suspension system may be visible through the panels, consider using a 360° Painted Grid System coordinated with the panel color.

Item 8196 should not be field cut. Use Item 8197, with 5" center hole, for sprinklers, lighting, and other mechanicals. Additionally, care should always be taken when cutting metal. Please see installation instructions for specific guidance on each type of mesh panel.

Installation Considerations

For panels over 60" in length, stabilizer bars and hold down clips are required. For custom design assistance contact ASQuote@armstrongceilings.com

The edges of MetalWorks™ Mesh panels feature unique detailing. Use caution and wear appropriate hand and eye protection when installing or cutting these metal panels. Refer to Installation Instructions BPLA-297075 at armstrongceilings.com/metalworks for details and cutting recommendations.

Cleaning and Disinfecting

Cleaning and CDC approved disinfecting options available on armstrongceilings.com/cleaning

FAST134 Program Considerations

Size of Job Matters: Big jobs, over 2500 SF or 50 pieces for shapes/vertical elements will have longer lead times.

Location Matters: Transit time not included. We are ready to ship in 1 week on FAST1 items. However, transit to the states west of Wyoming may add time.

Distributor Truck Schedule Matters: We rely on distribution to help move products around the country. When speed matters, work with your local distributor to ensure FAST134 service.


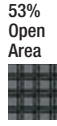

PERFORMANCE

Dots represent high level of performance.

% Open Area	Fire Rating	CleanAssure™ Disinfectable Panels		
		Fog	Spray	Wipe
78%	Class A	.	.	.
78%	Class A	.	.	.
78%	Class A	.	.	.
78%	Class A	.	.	.
88%	Class A	.	.	.
88%	Class A	.	.	.
88%	Class A	.	.	.
88%	Class A	.	.	.
92%	Class A	.	.	.
78%	Class A	.	.	.
88%	Class A	.	.	.
50%	Class A	.	.	.
60%	Class A	.	.	.

ACOUSTICAL INFORMATION

Patterns with similar open area will achieve similar acoustic results.

% Open Area	Infill Panel Item No.	Dimensions	NRC
21% Open Area 	Single Flat Narrow	5823	24 x 24" 0.75
	1713BL	24 x 24"	0.70
	2820BK	24 x 24"	0.85
	2821BK	24 x 48"	0.85
	2864BK	24 x 72"	0.85
53% Open Area 	Twin Flat Narrow	5823	24 x 24" 0.75
	1713BL	24 x 24"	0.70
	2820BK	24 x 24"	0.85
	2821BK	24 x 48"	0.85
	2864BK	24 x 72"	0.85
76% Open Area 	1Cell	5823	24 x 24" 0.75
	1713BL	24 x 24"	0.70
	2820BK	24 x 24"	0.85
	2821BK	24 x 48"	0.85
	2864BK	24 x 72"	0.85

STABILIZER BAR & HOLD DOWN CLIPS

Required for all panels greater than 60" in length

Item No.	Description	Pieces/Carton
7425	Stabilizer Bar	100
CHDC	Clear Hold Down Clips	50
FHDC	Black Hold Down Clips	1000

Stock vs Made-to-Order Matters: FAST3 & FAST4 items are made-to-order and will ship direct to distributor. FAST1 (stocked items) will go through distribution and depend on distributor truck schedules.

Warranty

Details at armstrongceilings.com/warranty

Weight/Panel (Bulk Packed)

6411 – 8.2 lbs/pc	6136W24L24 – 2.6 lbs/pc
6413 – 5.1 lbs/pc	6136W24L48 – 5.2 lbs/pc
6414 – 6.9 lbs/pc	6136W24L72 – 7.7 lbs/pc
6415W24L24 – 3.85 lbs/pc	6136W24L96 – 5.2 lbs/pc
6415W24L48 – 7.7 lbs/pc	6138W24L24 – 1.55 lbs/pc
6415W24L72 – 11.4 lbs/pc	6138W24L48 – 3.1 lbs/pc
6415W24L96 – 15.1 lbs/pc	6138W24L72 – 4.5 lbs/pc
6416W24L24 – 1.95 lbs/pc	6138W24L96 – 10 lbs/pc
6416W24L48 – 3.9 lbs/pc	6412AM – 4.8 lbs/pc
6416W24L72 – 10.7 lbs/pc	6137AM – 2.8 lbs/pc
6416W24L96 – 14.1 lbs/pc	6139AM – 2.1 lbs/pc
6417 – 3.3 lbs/pc	8190AM – 4.4 lbs/pc
6418 – 3.2 lbs/pc	8191AM – 3.2 lbs/pc
6128AM – 4.2 lbs/pc	8192AM – 1.9 lbs/pc
6129AM – 6 lbs/pc	8193AM – 2.3 lbs/pc
6131W24L24 – 3.55 lbs/pc	8194AM – 3.0 lbs/pc
6131W24L48 – 7.1 lbs/pc	8196AM – 7.9 lbs/pc
6131W24L72 – 10.9 lbs/pc	8197AM – 7.3 lbs/pc
6131W24L96 – 14.6 lbs/pc	8198AM – 4.8 lbs/pc
6132W24L24 – 1.95 lbs/pc	8199AM – 6.5 lbs/pc
6132W24L48 – 3.9 lbs/pc	8200AM – 8.1 lbs/pc
6132W24L72 – 5.8 lbs/pc	8195AM – 7.4 lbs/pc
6132W24L96 – 7.7 lbs/pc	8203AM – 7.0 lbs/pc
6133AM – 1.6 lbs/pc	8201AM – 4.5 lbs/pc
6410AM – 4.8 lbs/pc	8202AM – 7.7 lbs/pc

Minimum Order Quantity
24" x 24" panels – 100 SF
all other sizes – 500 SF

TechLine / 1 877 276-7876
armstrongceilings.com/mesh
BPCS-5114-721

LEED® is a registered trademark of the U.S. Green Building Council; Living Building Challenge® (LBC) is a trademark of the International Living Future Institute®; WELL™ and WELL Building Standard are trademarks of the International WELL Building Institute; all other trademarks used herein are the property of AWI Licensing LLC and/or its affiliates © 2021 AWI Licensing LLC

Armstrong®
CEILING & WALL SOLUTIONS



METALWORKS™ – Standard