

# WOODWORKS® ACGI Flat Panel

## Series 1



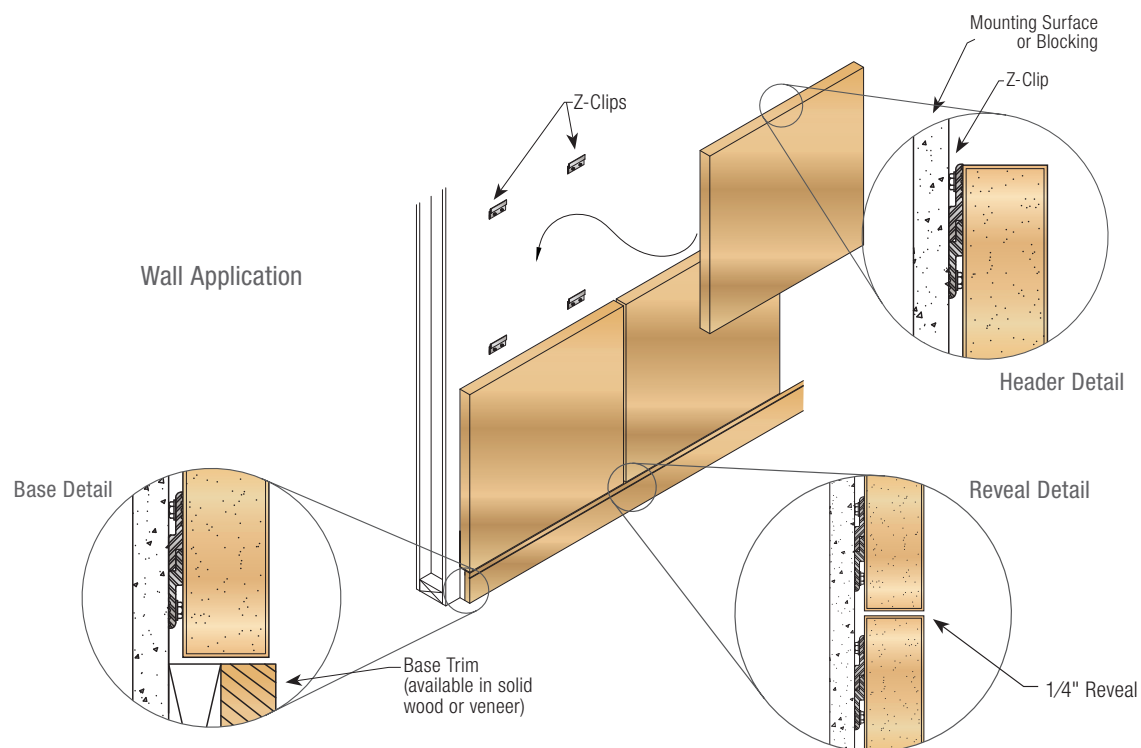
Flat Panel Series 1 (SS1) is a wall panel system with an aluminum Z-Clip suspension that attaches to the wall behind.

System incorporates an 1/4" minimum reveal between panels.

Panels are accessible.

Base trim and vertical perimeter trims are available in a variety of sizes.

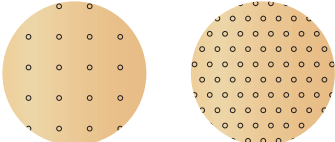
Perforation options control sound absorption, and acoustic insulation is added behind panels for better acoustical performance.



WOODWORKS® ACGI Flat Panel

Series 1

How To Spec Perforated Patterns...



ParallelOffset

Series

3/4" Panel Thickness

Height

Alignment (Parallel or Offset)

Width

Perforation Size

Spacing (Horizontal & Vertical)

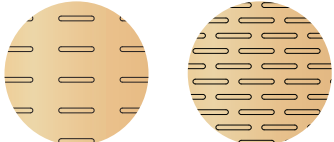
SS1-2424-C-P832-P

What It Means...

Flat Panel Series 1

24" x 24" panel, 3/4" thick, and 8mm perforations spaced 32mm O.C. vertically and horizontally with parallel alignment.

How To Spec Slotted Patterns...



ParallelOffset

Series

3/4" Panel Thickness

Height

Alignment (Parallel or Offset)

Width

Slot Size

Spacing (Horizontal & Vertical)

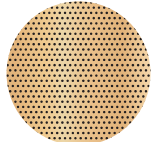
SS1-2424-C-S832-32-O

What It Means...

Flat Panel Series 1

24" x 24" panel, 3/4" thick, and 8mm x 32mm slots spaced 32mm O.C. vertically and horizontally with offset alignment.

How To Spec MicroPerf Patterns...



Offset

Series

3/4" Panel Thickness

Height

Alignment (Parallel or Offset)

Width

MicroPerf (0.55mm perforations)

SS1-2424-C-MP55-P

What It Means...

Flat Panel Series 1

24" x 24" panel, 3/4" thick, and 0.55mm perforations spaced 2mm O.C. vertically and horizontally with parallel alignment.

Flat Panel Series 1 – Specification Information						
Product No.	Suspension	Reveal	Width	Length	Typical Thickness	Panel Weight
SS1-####-C (wall)	Z-Clip	1/4"	Up to 5'	Up to 10'	3/4"	3 lbs/sq. ft.

ACOUSTICS

NRC up to 0.85

LEED® CREDIT

Depending on the product it may contribute to LEED credits. Contact us for more information.

SPECIES + STAINS

Flat Panel Wall System (SS1) is available in a variety of Veneer Species and custom stains. Please see Wood Species + Stain Catalog. Contact us for more information.

FIRE RATING

Veneer Wood (Non-Perforated) – Class A: ASTM E84 surface burning characteristics.

DELIVERY, STORAGE & HANDLING (FOR INTERIOR APPLICATION ONLY)

Material must be stored and installed only in secured ambient environment (humidity range 25%–55%, temperature not to exceed 86°F). All windows, doors, and wet-work must be complete before installation. Handle carefully to avoid damaging.

WARRANTY

Details at [armstrongceilings.com/warranty](http://armstrongceilings.com/warranty)