

QUIKSTIX™
Drywall Grid
Locking Pocket Main Beams

A FrameAll®
Drywall Grid Solution



QuikStix™ Drywall Ceiling System

Drywall suspension systems specifically engineered for faster, easier drywall installation...even for drywall spans of up to 8'6".

KEY SELECTION ATTRIBUTES

- QuikStix™ Locking Pocket Main Beams are part of the Sustain™ portfolio and meet the most stringent industry sustainability compliance standards today

ShortSpan® Tees

- Some components available in High Recycled Content (HRC); Total Recycled Content 61%, Post-consumer 53%, Pre-consumer 8%
- Non-HRC items have 30% recycled content
- 1-1/2" wide face exceeds the minimum industry standard
- **ScrewStop™** reverse hem prevents screw spin off
- Balanced profile stays flat during installation
- Rotary stitching on double web adds strength and stability
- Deep knurled surface for easy screw insertion
- G40, .018" metal thickness meets ASTM C645

StrongBack™

- Easy, pre-engineered solution to support spans over 6' or 8'-6"

Locking Angle Molding

- Pre-engineered locking tabs punched 8" on center:
 - Eliminate measuring 16" or 24"
 - Prevent lateral and upward movement
 - Eliminate screws, pop rivets, or crimpers needed to attach tees to molding
- Knurled surface on both flanges
- **ScrewStop** reverse hem prevents screw spin-off and provides safer handling
- 10-year limited warranty

VISUAL SELECTION

| | Item No. | Description | Dimensions |
|---|---|---|------------------------|
| QuikStix™ Locking Pocket Main Beams 1-1/2" Face Profile (Red Numbers are Fire Guard™ Items) | QSLPM12 QSLPM12G90 | 12' Locking Pocket Main (Locking Tabs 8" O.C.) | 144 × 1-1/2 × 1-13/16" |
| ShortSpan® Cross Tees 1-1/2" Face Profile | S7708P S7708PG90 | 8' ShortSpan Tee | 96 × 1-1/2 × 1-13/16" |
| | S7710 S7710G90 | 10' ShortSpan Tee | 120 × 1-1/2 × 1-13/16" |
| | S7712P S7712PHRC S7712PG90 | 12' ShortSpan Tee | 144 × 1-1/2 × 1-13/16" |
| | S7714P S7714PHRC S7714PG90 | 14' ShortSpan Tee | 168 × 1-1/2 × 1-13/16" |
| Locking Angle Mold 1-1/4" Face Profile | LAM12 | 12' Locking Angle Mold (Locking tabs 8" O.C.) | 144 × 1-1/4 × 1-1/4" |
| Accessories | QSUTC | QuikStix Uptight Clip (G90) | 1-3/4" x 4-1/2" |

* Simple Span L/240

NOTE: All components are available with G90 hot dipped galvanized coating. Just add G90 suffix to end of item number.

MAXIMUM LOAD (LBS/LF)

| HANGER SPACING* LBS/LF | | |
|---------------------------|-------|------|
| 36" | 48" | |
| 47.3 | 22.37 | |
| 60" | 72" | 96" |
| 19.1 | 11.2 | 4.8" |
| 19.1 | 11.2 | 4.8" |
| 19.1 | 11.2 | 4.8" |
| 19.1 | 11.2 | 4.8" |
| N/A | N/A | N/A |
| N/A | N/A | N/A |

PACKAGING

| LF/ Ctn. | Pcs./ Ctn. |
|-------------|---------------|
| 144 | 12 |
| 96 | 12 |
| 120 | 12 |
| 144 | 12 |
| 168 | 12 |
| 240 | 20 |
| N/A | 150 |

QUIKSTIX™

Drywall Grid

Locking Pocket Main Beams



RECYCLED
CONTENT

UP TO
61%

LEED V5

COMMON MATERIALS FRAMEWORK
Human Health
Declare Label
HPD
3rd Party CDPH
Climate Health
EPD
Ecosystem Health
EPD
Circular Economy

Ecomedes Data

LOAD TEST DATA

| | | | HANGER SPACING UNIFORM LOAD AT L/240 (LBS/LF) | | | | | | | |
|-------------------------------|----------|------------|--|-------|------|------|-----|-----|------|------|
| | Item No. | Web Height | 36" | 48" | 60" | 72" | 84" | 90" | 102" | 108" |
| ShortSpan® Cross Tees | S77**P | 1-13/16" | N/A | 36.7 | 19.1 | 11.2 | 7.2 | N/A | N/A | N/A |
| QuikStix™ Locking Pocket Main | QSLPM12 | 1-1/2" | 40.60 | 20.87 | N/A | N/A | N/A | N/A | N/A | N/A |
| StrongBack™ Support Hanger | SB12P | 2" | 27.53 | 17.76 | N/A | N/A | N/A | N/A | N/A | N/A |

MAXIMUM ALLOWABLE LOAD, LBS./SF @ L/240 DEFLECTION (10'-14' spans require a mid-span support)

| | | HANGER SPACING UNIFORM LOAD AT L/240 (LBS/LF) | | | | | | | | | | |
|----------|--------------|--|-------|------|------|------|------|------|------|-------|------|------|
| Item No. | O.C. Spacing | 48" | 60" | 72" | 84" | 90" | 96" | 102" | 108" | 120" | 144" | 168" |
| S77**P | 8" | - | 28.6 | 16.8 | 10.8 | - | 7.2 | 6.0 | - | 28.6 | 16.8 | 10.8 |
| QSLPM12 | 16" | 23.82 | 10.64 | 7.87 | 4.38 | 4.16 | 3.32 | 2.53 | 2.23 | 10.64 | 7.87 | 4.38 |
| SB12P | 24" | 15.88 | 7.09 | 5.25 | 2.92 | 2.77 | 2.22 | 1.69 | - | 7.09 | 5.25 | 2.92 |

NOTE: 5/8" drywall weighs 2.4 lbs./SF (tees installed 8" or 16" or 24" O.C.)
1/2" drywall weighs 2.0 lbs/SF (tees installed 16" O.C., maximum)

QUIKSTIX™

Drywall Grid

Locking Pocket Main Beams



Declare.

RECYCLED
CONTENT

UP TO
61%

LEED V5

Ecomedes Data

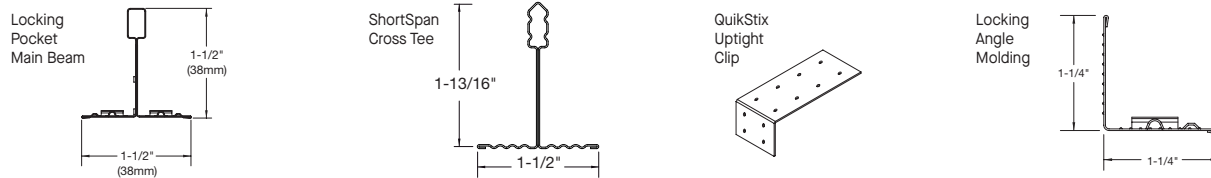
COMMON MATERIALS FRAMEWORK

| | | | |
|--------------|----------------|------------------|-----|
| Human Health | Declare Label | Climate Health | EPD |
| | HPD | Ecosystem Health | EPD |
| | 3rd Party CDPH | Circular Economy | ✓ |

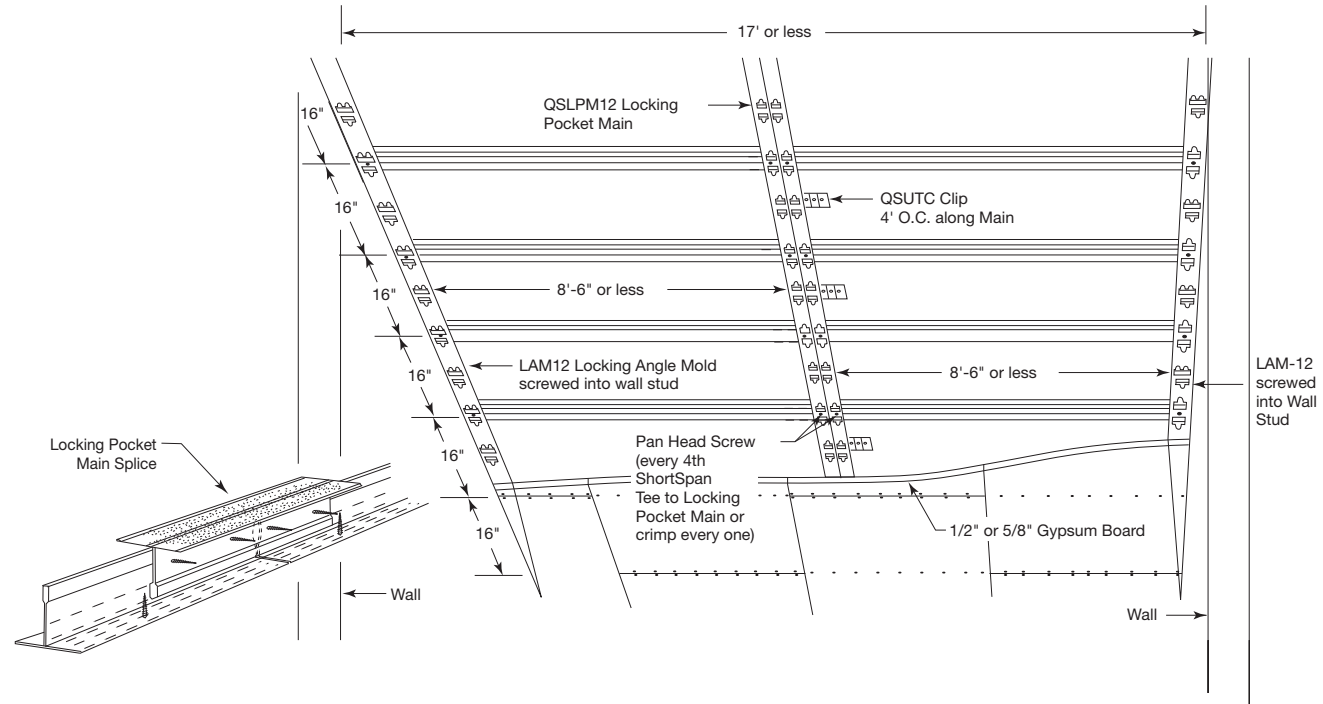
INSTALLATION DETAILS

1. Vertical Supports to structure should be either QuikStix™ Uptight Clips or stiff legs using scrap metal. Wire is NOT recommended for hanging this system.
2. ShortSpan® tees must be cut within 1/8" of vertical leg of the Locking Angle Moldings and Locking Pocket Mains.
3. To engage ShortSpan tees into Locking Pockets: insert right hand flange of tee into long pocket first and allow left flange to clear short pocket and rest flat.
Slide tee to the left to engage in short pocket (audible click).

DETAILS



INSTALLATION NOTES



QUIKSTIX™

Drywall Grid

Locking Pocket Main Beams



Declare.

RECYCLED
CONTENT

UP TO
61%

LEED V5

COMMON MATERIALS FRAMEWORK

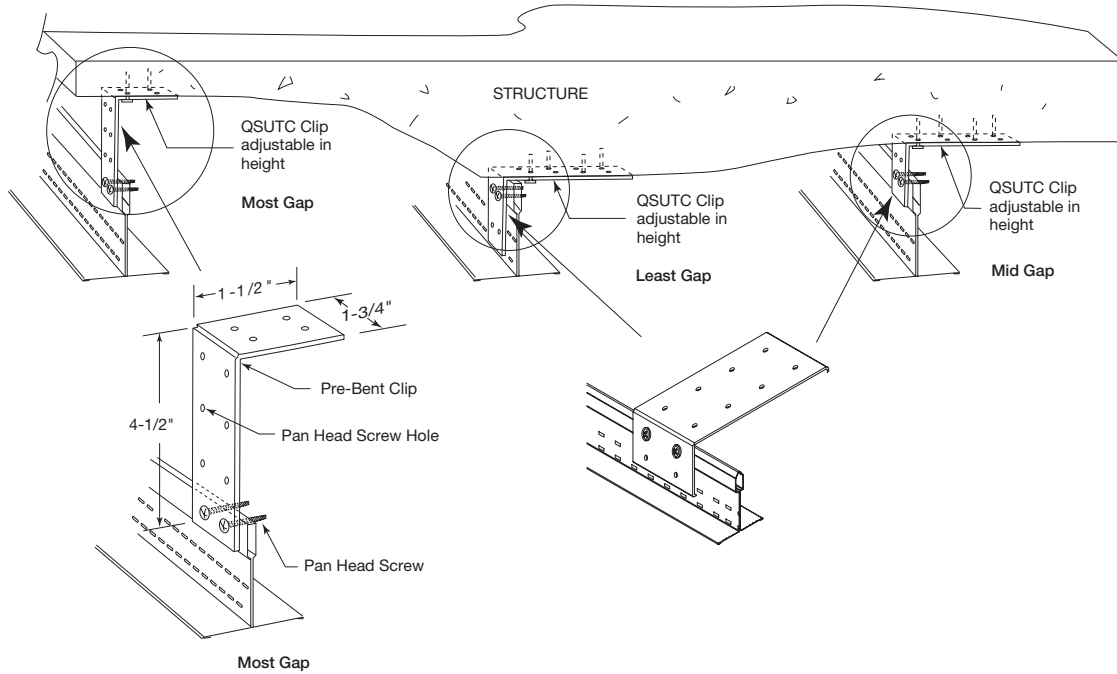
Human Health **Declare Label**
HPD
3rd Party CDPH

Ecomedes Data

Climate Health **EPD**
Ecosystem Health **EPD**
Circular Economy **✓**

INSTALLATION NOTES (continued)

Uptight Clip (QSUTC): Saves time in tight plenum areas and is adjustable to uneven surfaces



Locking Pocket Mains Help With Corridor Transitions

