

OPTIMA® PB Shapes
for DESIGNFLEX®
with Plant-based Binder
Tegular
fine texture



DESIGNFLEX® CEILING SYSTEMS

PERSONALIZE YOUR DESIGN!

Mix and match different sizes, shapes, colors, and materials to reinvent your ceiling. More at: armstrongceilings.com/designflex



Optima PB Shapes panels with Suprafine XM 9/16" suspension system



See more patterns at: armstrongceilings.com/patterngallery

Fine-textured ceiling panels available in shapes and made-to-order sizes with Sustain® performance. Available to ship in 3 weeks.

KEY SELECTION ATTRIBUTES

- DesignFlex® options include shapes and made-to-order sizes available to ship in 3 weeks
- Mix and match – Shapes also available with Calla®, Lyra®, Ultima®, MetalWorks™, and WoodWorks® panels
- Optima® PB panels are manufactured with a plant-based binder and are part of the Sustain® portfolio, and meet the most stringent industry sustainability compliance standards today
- CleanAssure™ family of products – includes disinfectable panels, suspension systems, and trim
- Mold- and mildew-resistant surface
- Excellent sound absorption – NRC 0.95
- Light reflectance – 0.88
- Shaped lights and diffusers are available from our DesignFlex® partners. Our lighting partners for TechZone® and MEP partners also provide products that are compatible with the DesignFlex® system; other standard modular and pendant fixtures can also be used with this ceiling system
- Washable, Scratch-resistant, Soil-resistant
- Made in the U.S.A. of domestic and global content
- Build America, Buy America (BABA) Act compliant
- 10-Year Limited System Warranty against visible sag, mold, and mildew

COLOR



White
(WH)

DETAILS



1. Optima® PB Shapes Tegular
2. Optima® PB Shapes Tegular with Suprafine® XM 9/16" suspension system

COMMON MATERIALS FRAMEWORK

Human Health	Declare Label	Climate Health	EPD
	HPD	Ecosystem Health	EPD
	3rd Party CDPH	Circular Economy	✓
OCCUPANT EXPERIENCE		Acoustics	✓

Start your design process with a visit to our online pattern gallery at: armstrongceilings.com/patterngallery

See dozens of pre-designed patterns and colors online in our pattern gallery. We've provided all of the details – from takeoffs showing 2' or 4' on-center spacing to panels, suspension, trims, and accessories. Installation instructions answer questions typically associated with unique ceiling installations. Lighting and air diffusers can also be easily integrated. If you can't find the ceiling pattern you envision for your next space online, call us and we'll help you create a design to personalize your space – 1 877 276-7876.

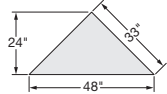


These 9 Optima® PB Shapes with Square Tegular edges are available with Suprafine® XM 9/16" suspension:

45° SHAPES

Triangles

2' Main Beam Spacing



Item No. Description/
Dimensions
(Inches)

100200 Triangle
24 x 48 x 1"

Total
Acoustics¹

$$\text{NRC} + \text{CAC} = \text{NRC} + \text{CAC}$$

0.95 N/A -

Right Triangle –
2' Main Beam Spacing



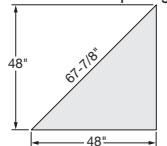
100207 Right Triangle –
24 x 24 x 1"

Total
Acoustics¹

$$\text{NRC} + \text{CAC} = \text{NRC} + \text{CAC}$$

0.95 N/A -

Right Triangle –
4' Main Beam Spacing



100208 Right Triangle –
48 x 48 x 1"

Total
Acoustics¹

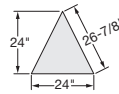
$$\text{NRC} + \text{CAC} = \text{NRC} + \text{CAC}$$

0.95 N/A -

60° SHAPES

Triangles

2' Main Beam Spacing



Item No. Description/
Dimensions
(Inches)

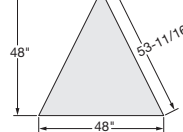
100201 Triangle
24 x 24 x 1"

Total
Acoustics¹

$$\text{NRC} + \text{CAC} = \text{NRC} + \text{CAC}$$

0.95 N/A -

4' Main Beam Spacing



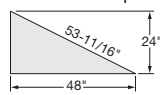
100202 Triangle
48 x 48 x 1"

Total
Acoustics¹

$$\text{NRC} + \text{CAC} = \text{NRC} + \text{CAC}$$

0.95 N/A -

Right Triangle –
2' Main Beam Spacing

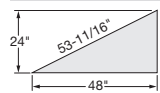


100205 Right Triangle –
Left 24 x 48 x 1"

Total
Acoustics¹

$$\text{NRC} + \text{CAC} = \text{NRC} + \text{CAC}$$

0.95 N/A -



100206 Right Triangle –
Right 24 x 48 x 1"

Total
Acoustics¹

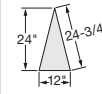
$$\text{NRC} + \text{CAC} = \text{NRC} + \text{CAC}$$

0.95 N/A -

75° SHAPES

Triangles

2' Main Beam Spacing



Item No. Description/
Dimensions
(Inches)

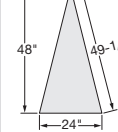
100203 Triangle
24 x 24 x 1"

Total
Acoustics¹

$$\text{NRC} + \text{CAC} = \text{NRC} + \text{CAC}$$

0.95 N/A -

4' Main Beam Spacing



100204 Triangle
48 x 48 x 1"

Total
Acoustics¹

$$\text{NRC} + \text{CAC} = \text{NRC} + \text{CAC}$$

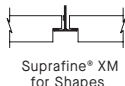
0.95 N/A -

MORE ITEMS

¹ Total Acoustics® ceiling panels have an ideal combination of sound absorption and sound blocking in one product.
GOOD (NRC 0.60-0.65; CAC 35+) **BETTER** (NRC 0.70-0.75; CAC 35+) **BEST** (NRC 0.80+; CAC 35+)

SUSPENSION SYSTEMS

9/16"



Suprafine® XM
for Shapes

PARTNER COMPANIES

For more information on our partner companies, please visit armstrongceilings.com/partners
Compatible with:
Axis Geometrix™ Lighting,
JLC-Tech FLEX® and T-BAR LED®
Lights and Price® diffusers.



Shaped infill panels are available for applicable lighting fixtures. Add **L I N E** to the end of any Shape panel item number to order. Metal diffuser infills are available from the diffuser manufacturer.

PHYSICAL DATA

Material

Fiberglass with DuraBrite® acoustically transparent membrane

Surface Finish

DuraBrite with factory-applied latex paint

Fire Performance

Class A: ASTM E84 and CAN/ULC S102 surface burning characteristics. Flame Spread Index 25 or less. Smoke Developed Index 50 or less (UL* labeled).

ASTM E1264 Classification

Type B, Form B2, Pattern E; Fire Class A

Humidity/Sag Resistance

HumiGuard® Plus ceiling panels are recommended for areas subject to high humidity, up to, but not including, standing water and outdoor applications.

Anti-Mold/Mildew

Ceiling tiles with BioBlock® performance resist the growth of mold and mildew on the tile surface.

VOC Emissions

Third-party certified compliant with California Department of Public Health CDPH/EHLB/Standard Method Version 1.2, 2017. This standard is the guideline for low emissions in LEED®, WELL Building Standard®, Living Building Challenge® (LBC), CalGreen Title 24, ANSI/ASHRAE/USGBC/IES Standard 189; ANSI/GBI Green Building Assessment Protocol

High Recycled Content

Classified as containing greater than 50% total recycled content. Total recycled content based on product composition of post-consumer and pre-consumer (post-industrial) recycled content per FTC guidelines.

Seismic Restraint

Suprafine® XM for Shapes suspension systems have been engineered, tested, and approved for use with DesignFlex® Shapes panels for application in all seismic areas when installed per Armstrong® Ceilings installation instructions. For more details, visit armstrongceilings.com/shapesinstallation

Insulation Value

R Factor – 2.2 (BTU units); R Factor – 0.39 (Watts units)

Cleaning and Disinfecting

Cleaning and CDC-recommended disinfecting options available on armstrongceilings.com/cleaning

10-Year Performance Guarantee & Warranty

When installed with Armstrong® Suspension System. Details at armstrongceilings.com/warranty

Weight; Pieces/ Carton

100203 – 0.4 LBS/PC; 24 PCS/CTN	100200, 100204 – 1.6 LBS/PC; 12 PCS/CTN
100201 – 0.8 LBS/PC; 12 PCS/CTN	100205, 100206 – 1.6 LBS/PC; 24 PCS/CTN
100207 – 0.8 LBS/PC; 24 PCS/CTN	100202 – 3.2 LBS/PC; 6 PCS/CTN
100208 – 3.2 LBS/PC; 12 PCS/CTN	

Minimum Order Quantity

1 carton

OPTIMA® PB Shapes for DESIGNFLEX®

with Plant-based Binder
Regular
fine texture



Declare.

RECYCLED
CONTENT

UP TO
71%

LEED V5

Ecomedes Data

COMMON MATERIALS FRAMEWORK

Human Health	Declare Label	Climate Health	EPD
	HPD	Ecosystem Health	EPD
	3rd Party CDPH	Circular Economy	✓
OCCUPANT EXPERIENCE		Acoustics	✓

PANEL OPTIONS (shown in finish view from below ceiling)

These 10 Optima® PB Shapes with Square Tegular edges are available with Suprafine® XM 9/16" suspension:

45° SHAPES

Parallelograms

2' Main Beam Spacing	Item No.	Description/ Dimensions (Inches)	Total Acoustics¹
	100213	Right Parallelogram 24 x 48 x 1"	$\text{NRC} + \text{CAC} = \text{NRC} + \text{CAC}$ 0.95 N/A -
	100214	Left Parallelogram 24 x 48 x 1"	$\text{NRC} + \text{CAC} = \text{NRC} + \text{CAC}$ 0.95 N/A -

60° SHAPES

Parallelograms

2' Main Beam Spacing	Item No.	Description/ Dimensions (Inches)	Total Acoustics¹
	100215	Right Parallelogram 24 x 24 x 1"	$\text{NRC} + \text{CAC} = \text{NRC} + \text{CAC}$ 0.95 N/A -
	100216	Left Parallelogram 24 x 24 x 1"	$\text{NRC} + \text{CAC} = \text{NRC} + \text{CAC}$ 0.95 N/A -
4' Main Beam Spacing	Item No.	Description/ Dimensions (Inches)	Total Acoustics¹
	100217	Right Parallelogram 48 x 48 x 1"	$\text{NRC} + \text{CAC} = \text{NRC} + \text{CAC}$ 0.95 N/A -
	100218	Left Parallelogram 48 x 48 x 1"	$\text{NRC} + \text{CAC} = \text{NRC} + \text{CAC}$ 0.95 N/A -

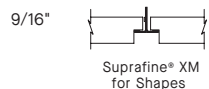
75° SHAPES

Parallelograms

2' Main Beam Spacing	Item No.	Description/ Dimensions (Inches)	Total Acoustics¹
	100219	Right Parallelogram 24 x 12 x 1"	$\text{NRC} + \text{CAC} = \text{NRC} + \text{CAC}$ 0.95 N/A -
	100220	Left Parallelogram 24 x 12 x 1"	$\text{NRC} + \text{CAC} = \text{NRC} + \text{CAC}$ 0.95 N/A -
4' Main Beam Spacing	Item No.	Description/ Dimensions (Inches)	Total Acoustics¹
	100221	Right Parallelogram 48 x 24 x 1"	$\text{NRC} + \text{CAC} = \text{NRC} + \text{CAC}$ 0.95 N/A -
	100222	Left Parallelogram 48 x 24 x 1"	$\text{NRC} + \text{CAC} = \text{NRC} + \text{CAC}$ 0.95 N/A -

¹ Total Acoustics® ceiling panels have an ideal combination of sound absorption and sound blocking in one product.
GOOD (NRC 0.60-0.65; CAC 35+) **BETTER** (NRC 0.70-0.75; CAC 35+) **BEST** (NRC 0.80+; CAC 35+)

SUSPENSION SYSTEMS



PARTNER COMPANIES

For more information on our partner companies, please visit armstrongceilings.com/partners

Compatible with:
Axis Geometrix™ Lighting,
JLC-Tech FLEX® and T-BAR LED®
Lights and Price® diffusers.



Shaped infill panels are available for applicable lighting fixtures. Add **L I N E** to the end of any Shape panel item number to order. Metal diffuser infills are available from the diffuser manufacturer.

PHYSICAL DATA

Material
Fiberglass with DuraBrite® acoustically transparent membrane

Surface Finish
DuraBrite with factory-applied latex paint

Fire Performance
Class A: ASTM E84 and CAN/ULC S102 surface burning characteristics. Flame Spread Index 25 or less. Smoke Developed Index 50 or less (UL® labeled).

ASTM E1264 Classification
Type B, Form B2, Pattern E; Fire Class A

Humidity/Sag Resistance
HumiGuard® Plus ceiling panels are recommended for areas subject to high humidity, up to, but not including, standing water and outdoor applications.

Anti-Mold/Mildew
Ceiling tiles with BioBlock® performance resist the growth of mold and mildew on the tile surface.

VOC Emissions
Third-party certified compliant with California Department of Public Health CDPH/EHLB/Standard Method Version 1.2, 2017. This standard is the guideline for low emissions in LEED®, WELL Building Standard®, Living Building Challenge® (LBC), CalGreen Title 24, ANSI/ASHRAE/USGBC/IES Standard 189; ANSI/GBI Green Building Assessment Protocol

High Recycled Content
Classified as containing greater than 50% total recycled content. Total recycled content based on product composition of post-consumer and pre-consumer (post-industrial) recycled content per FTC guidelines.

Seismic Restraint
Suprafine® XM for Shapes suspension systems have been engineered, tested, and approved for use with DesignFlex® Shapes panels for application in all seismic areas when installed per Armstrong® Ceilings installation instructions. For more details, visit armstrongceilings.com/shapesinstallation

Insulation Value
R Factor - 2.2 (BTU units)
R Factor - 0.39 (Watts units)

Cleaning and Disinfecting
Cleaning and CDC-recommended disinfecting options available on armstrongceilings.com/cleaning

10-Year Performance Guarantee & Warranty
When installed with Armstrong® Suspension System. Details at armstrongceilings.com/warranty

Weight; Pieces/Carton
100219, 100220 - 0.8 LBS/PC; 24 PCS/CTN
100215, 100216 - 1.6 LBS/PC; 12 PCS/CTN
100213, 100214, 100221, 100222 - 3.2 LBS/PC; 12 PCS/CTN
100217, 100218 - 6.4 LBS/PC; 6 PCS/CTN

Minimum Order Quantity
1 carton

TechLine 877 276-7876
armstrongceilings.com/optimashapes

Armstrong®
World Industries

OPTIMA® PB Shapes for DESIGNFLEX®

with Plant-based Binder
Tegular
fine texture



Declare.

RECYCLED
CONTENT
UP TO
71%

LEED V5

Ecomedes Data

COMMON MATERIALS FRAMEWORK

Human Health	Declare Label	Climate Health	EPD
	HPD	Ecosystem Health	EPD
	3rd Party CDPH	Circular Economy	✓
OCCUPANT EXPERIENCE		Acoustics	✓

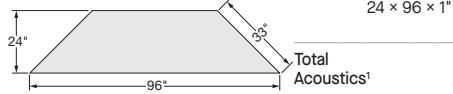
PANEL OPTIONS (shown in finish view from below ceiling)

These 4 Optima® PB Shapes with Square Tegular edges are available with Suprafine® XM 9/16" suspension:

45° SHAPES

Trapezoids

2' Main Beam Spacing



Item No. 100209
Description/Dimensions (Inches)
Trapezoid 24 x 96 x 1"

Total Acoustics¹

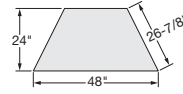
$$\text{NRC} + \text{CAC} = \text{NRC} + \text{CAC}$$

0.95 N/A -

60° SHAPES

Trapezoids

2' Main Beam Spacing



Item No. 100210
Description/Dimensions (Inches)
Trapezoid 24 x 48 x 1"

Total Acoustics¹

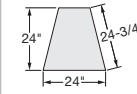
$$\text{NRC} + \text{CAC} = \text{NRC} + \text{CAC}$$

0.95 N/A -

75° SHAPES

Trapezoids

2' Main Beam Spacing



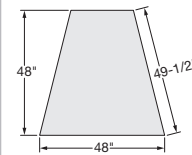
Item No. 100211
Description/Dimensions (Inches)
Trapezoid 24 x 24 x 1"

Total Acoustics¹

$$\text{NRC} + \text{CAC} = \text{NRC} + \text{CAC}$$

0.95 N/A -

4' Main Beam Spacing



Item No. 100212
Description/Dimensions (Inches)
Trapezoid 48 x 48 x 1"

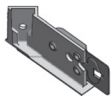
Total Acoustics¹

$$\text{NRC} + \text{CAC} = \text{NRC} + \text{CAC}$$

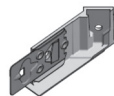
0.95 N/A -

¹ Total Acoustics* ceiling panels have an ideal combination of sound absorption and sound blocking in one product.
GOOD (NRC 0.60-0.65; CAC 35+) **BETTER** (NRC 0.70-0.75; CAC 35+) **BEST** (NRC 0.80+; CAC 35+)

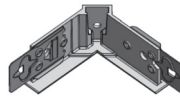
SUSPENSION COMPONENTS System utilizes Suprafine® XM suspension components including angle brackets, corner brackets, main beams, cross tees, and perimeter clips.



Right Angle Bracket



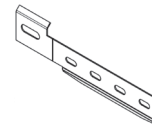
Left Angle Bracket



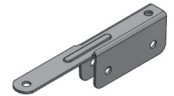
Double Angle Bracket



Corner Bracket

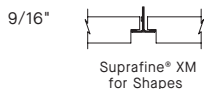


Axiom® Perimeter
Corner Clip



Perimeter Angle Clip

SUSPENSION SYSTEMS



PARTNER COMPANIES For more information on our partner companies, please visit armstrongceilings.com/partners

Compatible with:
Axis Geometrix™ Lighting,
JLC-Tech FLEX® and T-BAR LED®
Lights and Price® diffusers.



Shaped infill panels are available for applicable lighting fixtures. Add **L I N E** to the end of any Shape panel item number to order. Metal diffuser infls are available from the diffuser manufacturer.

PHYSICAL DATA

Material
Fiberglass with DuraBrite® acoustically transparent membrane

Surface Finish
DuraBrite with factory-applied latex paint

Fire Performance
Class A: ASTM E84 and CAN/ULC S102 surface burning characteristics. Flame Spread Index 25 or less. Smoke Developed Index 50 or less (UL* labeled).

ASTM E1264 Classification
Type B, Form B2, Pattern E; Fire Class A

Humidity/Sag Resistance
HumiGuard® Plus ceiling panels are recommended for areas subject to high humidity, up to, but not including, standing water and outdoor applications.

Anti-Mold/Mildew
Ceiling tiles with BioBlock® performance resist the growth of mold and mildew on the tile surface.

VOC Emissions
Third-party certified compliant with California Department of Public Health CDPH/EHLB/Standard Method Version 1.2, 2017. This standard is the guideline for low emissions in LEED®, WELL Building Standard®, Living Building Challenge® (LBC), CalGreen Title 24, ANSI/ASHRAE/USGBC/IES Standard 189; ANSI/GBI Green Building Assessment Protocol

High Recycled Content
Classified as containing greater than 50% total recycled content. Total recycled content based on product composition of post-consumer and pre-consumer (post-industrial) recycled content per FTC guidelines.

Seismic Restraint
Suprafine® XM for Shapes suspension systems have been engineered, tested, and approved for use with DesignFlex® Shapes panels for application in all seismic areas when installed per Armstrong® Ceilings installation instructions. For more details, visit armstrongceilings.com/shapesinstallation

Insulation Value
R Factor – 2.2 (BTU units)
R Factor – 0.39 (Watts units)

Cleaning and Disinfecting
Cleaning and CDC-recommended disinfecting options available on armstrongceilings.com/cleaning

10-Year Performance Guarantee & Warranty
When installed with Armstrong® Suspension System. Details at armstrongceilings.com/warranty

Weight; Pieces/ Carton
100211 – 1.2 LBS/PC; 12 PCS/CTN
100210 – 2.4 LBS/PC; 12 PCS/CTN
100209, 100212 – 4.8 LBS/PC; 6 PCS/CTN

Minimum Order Quantity
1 carton