

Continuous Load Path (CLP)

Main Beam Component



Continuous Load Path main beam component for Prelude XL

CLP7301 Component

The Continuous Load Path (CLP) 6" main beam component integrates with Prelude® XL® suspension system, creating a pathway for the threaded rod to pass through the ceiling plane without unwarranted air penetration.

KEY SELECTION ATTRIBUTES

- Seamlessly integrates with Prelude® XL®
- Allows a threaded rod to connect to the deck without interrupting the ceiling plane
- Designed to accommodate 1/2" and 3/8" threaded rods
- Point loads of up to 1,800 lbs per 3/8" rod and up to 3,300 lbs per 1/2" rod with no weight transferred to the ceiling system
- CleanAssure™ family of products – includes disinfectable panels, suspension systems, and trim (Cleaning and CDC-approved disinfecting options available on armstrongceilings.com/cleaning)
- Helps to manage air flow without unwarranted air penetrations in the ceiling grid or panels
- CLP7301 stabs into the CLP main beams for easy connection
- Combines the ceiling system with a structural

component for hanging cable trays, heavy lighting, or signage

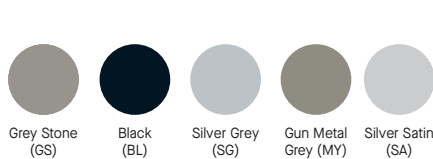
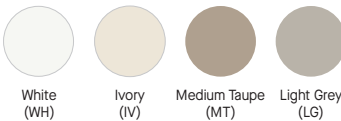
- Utilizes standard Armstrong ceiling panels that do not need to be cut or notched around CLP
- Compatible with DynaMax™ Structural Aluminum Data Center Suspension System
- Reduces the number of hanger wires

TYPICAL APPLICATIONS

- Data Centers
- Signage
- Lighting
- Anywhere conditions require added strength

COLORS AND FINISHES

Standard



Premium



Powder-Coated Finishes*



NOTE: Powder-coated finishes are also available on select Axiom® Classic, Knife Edge®, and Vector® trim profiles



Available in any color!*

*Colors that are pre-qualified to meet Sustain™ portfolio requirements are available upon request. Other made-to-order colors must be evaluated if sustainability criteria is required. Lead time will increase.

† Capping only

Continuous Load Path (CLP)

Main Beam Component

Declare.

RECYCLED
CONTENT

UP TO
30%

LEED V5

Ecomedes Data

COMMON MATERIALS FRAMEWORK

Human Health

Declare Label

Climate Health

EPD

HPD

Ecosystem Health

EPD

3rd Party CDPH

Circular Economy

✓

Well Building Standard™ (WELL)
Living Building Challenge® (LBC)

VISUAL SELECTION

PERFORMANCE

PACKAGING

							LOAD TEST DATA (LBS/LF)		<div><div>Fire Guard™</div><div>Seismic Category</div><div>CleanAssure™ Disinfectable Grid</div></div> <div><div></div><div></div><div></div><div></div><div></div></div>					Pieces/ Carton	LF/ Carton	
	Item No. ♦	Face Profile	Description	Rout Spacing	Dimensions (Inches)	Color	L/360 4 Ft.	L/360 5 Ft.								
Continuous Load Path (CLP)	CLP7301	15/16"	N/A	N/A	6" × 15/16"	WH	N/A	N/A	N/A	*	*	*	*	20	10	
	7396	15/16"	9' 6" Main Beam	6" O.C.	114" × 15/16"	WH, IV, MT, LG, GS, BL, SG, MY, SA, CM, WA, NA, CP, BZ, PW, SL, ZW, ZB	16.5	8.73	N/A	*	*	*	*	20	190	
	7376	15/16"	7' 6" Main Beam	6" O.C.	90" × 15/16"	WH, IV, MT, LG, GS, BL, SG, MY, SA, CM, WA, NA, CP, BZ, PW, SL, ZW, ZB	16.5	8.73	N/A	*	*	*	*	20	150	
Prelude® XL®	7301_ _ 7301HRC	15/16"	12' HD Main Beam	6" O.C.	144 × 15/16 × 1-11/16"	WH, IV, MT, LG, GS, BL, SG, MY, SA, CM, WA, NA, CP, BZ, PW, SL, ZW, ZB	16.73	8.73	N/A N/A	*	*	*	*	20 20	240 240	
	XL7357_ _ ♦	15/16"	4' Cross Tee	12"	48 × 15/16 × 1-3/8"	WH, IV, MT, LG, GS, BL, SG, MY, SA, CM, WA, NA, CP, BZ, PW, SL, ZW, ZB	6.78	N/A	N/A	*	*	*	*	60	240	
	XL7328_ _	15/16"	2' Cross Tee	N/A	60 × 15/16 × 1-11/16"	WH, IV, MT, LG, GS, BL, SG, MY, SA, CM, WA, NA, CP, BZ, PW, SL, ZW, ZB	36.0 @ 2'	N/A	N/A	*	*	*	*	60	120	
* Simple Span ** Hanger Wire Support Mid-Span † Items available in Standard, Premium, and Blizzard White powder-coated finish ♦ Items available in Blizzard White and Charcoal Black powder-coated finish ♦ When specifying or ordering items with a color or finish, add the two-letter suffix to the end of the item number (e.g., 7301 L G – Light Grey)							Note: Additional Prelude XL items for TechZone® Ceiling Systems are listed in the TechZone Technical Guide (BPCS-4486). Available online at armstrongceilings.com/techzone			Dots represent high level of performance.					ASTM Class HD - Heavy-duty ID - Intermediate-duty LD - Light-duty	

VISUAL SELECTION

PACKAGING

	Item No. ♦♦	Description	Length	(A) Flange	(B) Height	(C) Reveal	(D) Reveal	Pieces/ Carton	LFT/ Carton
Suggested Wall Moldings and Shadow Moldings	7800_ _ ♦♦ 7800HRC	12' Hemmed Angle Molding	144"	7/8"	7/8"	N/A	N/A	30	360

♦♦ Items available in Standard, Premium, and Blizzard White and Charcoal Black powder-coated finish. When specifying or ordering items with a color or finish, add the two-letter suffix to the end of the item number (e.g., 7301 L G - Light Grey)

Continuous Load Path (CLP) Main Beam Component

RECYCLED
CONTENT

LEED V5

Ecomedes Data

UP TO
30%

COMMON MATERIALS FRAMEWORK

Human Health

Declare Label

Climate Health

EPD

HPD

Ecosystem Health

EPD

3rd Party CDPH

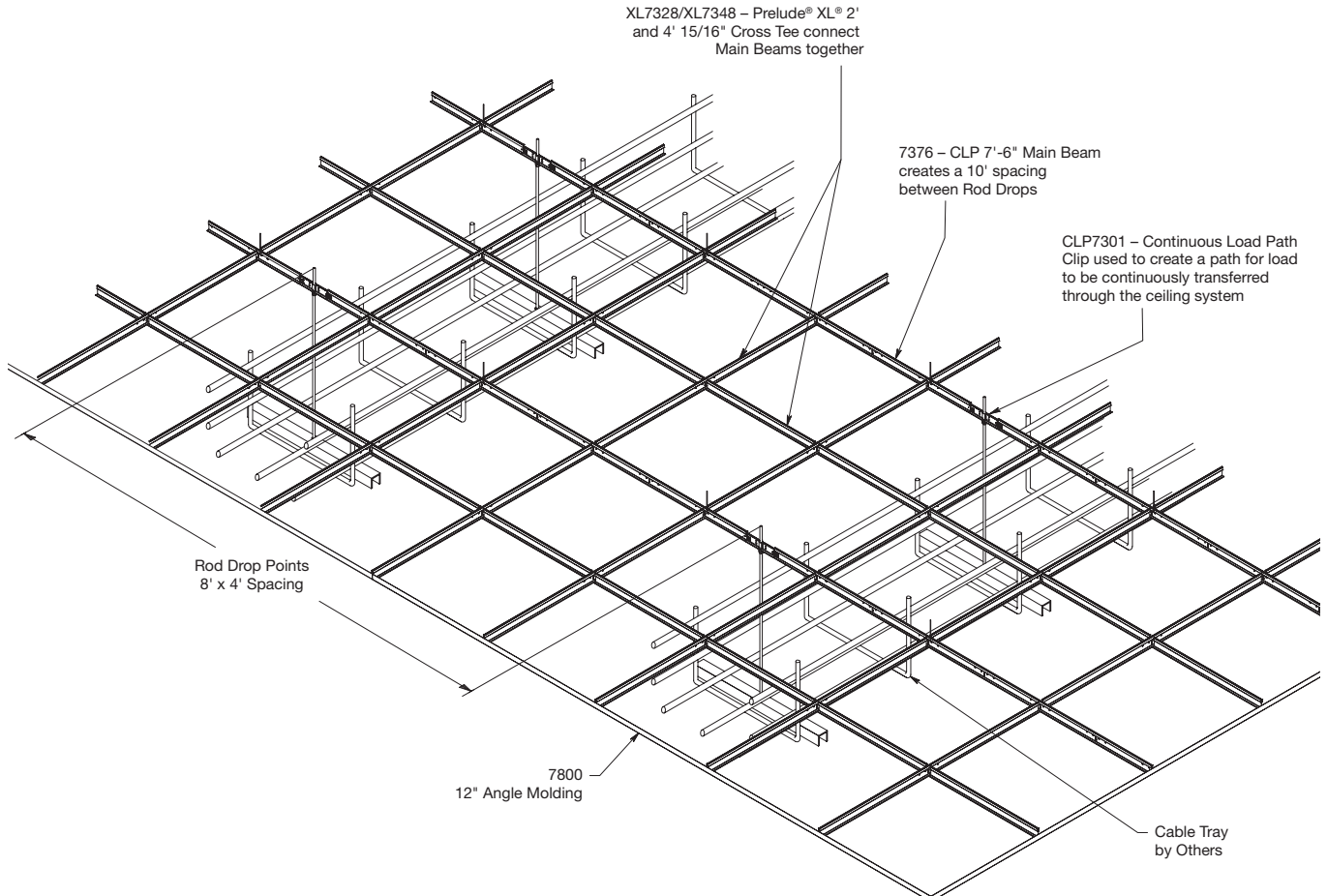
Circular Economy

✓

Well Building Standard™ (WELL)
Living Building Challenge® (LBC)

Declare.

DETAILS



SUSPENSION SYSTEMS – DATA CENTERS

Continuous Load Path (CLP)

Main Beam Component

RECYCLED
CONTENT

LEED V5

Ecomedes Data

UP TO
30%

COMMON MATERIALS FRAMEWORK

Human Health

Declare Label

Climate Health

EPD

HPD

Ecosystem Health

EPD

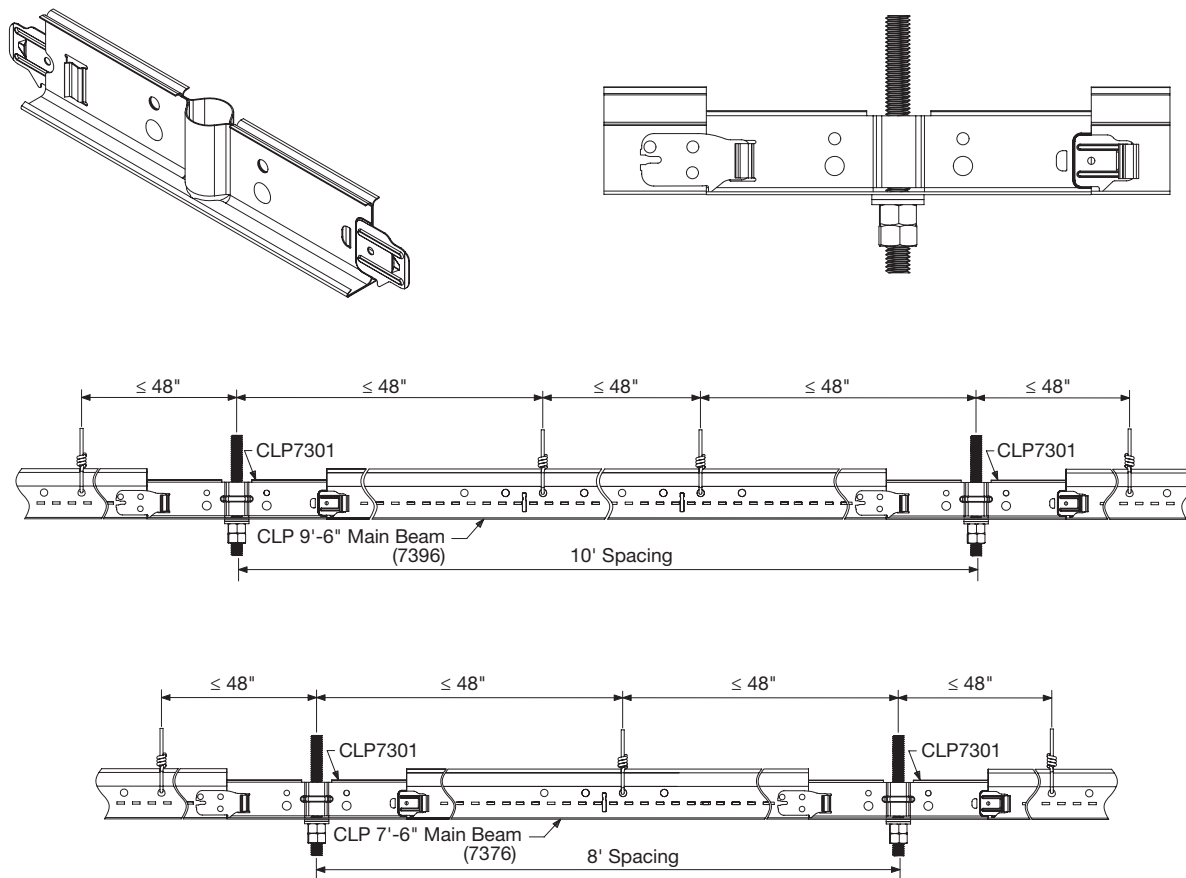
3rd Party CDPH

Circular Economy

✓

Well Building Standard™ (WELL)
Living Building Challenge® (LBC)

Declare.



CLP MAIN BEAMS FOR PRELUDE® XL®



CLP Main Beam
7396/7376

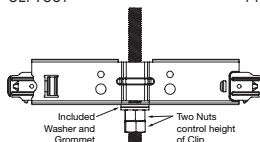


CLP7301

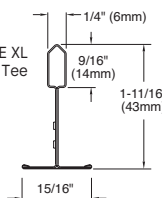


PRELUDE XL
Cross Tee

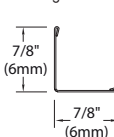
CLP7301



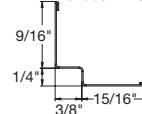
PRELUDE XL
Cross Tee



7/8" Hemmed
Angle Molding



15/16" Hemmed
Shadow Molding



SEISMIC PERFORMANCE

Main Beams
7396, 7376

Minimum Lbs. To Pull Out Compression/Tension
335.0
330.0

Cross Tees

All XL® cross tees exceed 300 lbs. in both
compression and tension.

ICC Reports

For areas under ICC jurisdiction, see ICC evaluation report
number ESR-1308 for allowable values and/or conditions of use
concerning the suspension system components listed on this
page. The report is subject to re-examination, revisions, and
possible cancellation.

PHYSICAL DATA

Material
Hot-dipped galvanized steel
Surface Finish
Baked polyester paint or powder coated
Manufactured and tested in accordance with ASTM C635

Face Dimension
15/16"
Profile
Exposed tee
Cross Tee/Main Beam Interface
Override

End Detail
Main Beam: Staked-on clip
Cross Tee: Staked-on clip
Duty Classification
Intermediate or Heavy-duty

TechLine / 1 877 276-7876
armstrongceilings.com/datacenter
BPCS-6284-925

LEED® is a registered trademark of the U.S. Green Building Council; Declare® and Living Building Challenge® (LBC) are registered trademarks of the International Living Future Institute®; WELL™ and Well Building Standard™ are trademarks of the International WELL Building Institute; all other trademarks used herein are the property of AWI Licensing LLC and/or its affiliates © 2025 AWI Licensing LLC

Armstrong®
World Industries