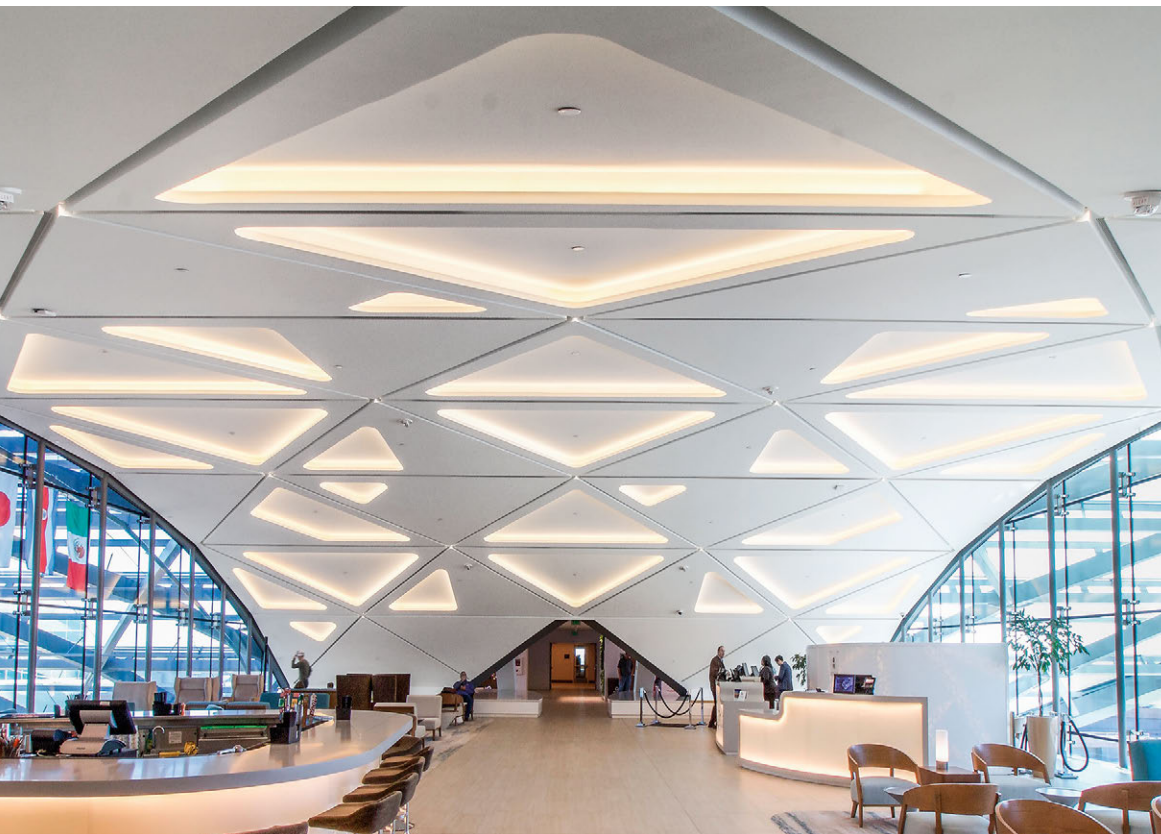


CASTWORKS™

Glass Fiber Reinforced Gypsum (GRG/GFRG)
architectural forms



CastWorks GRG custom ceiling and wall panels with integrated light coves



armstrongceilings.com/capabilities
See more photos at:
armstrongceilings.com/photogallery

CastWorks™ GRG (glass fiber reinforced gypsum) is an ideal interior application for compound curves and unique dimensional designs.

KEY SELECTION ATTRIBUTES

- Cast into any shape or compound curve
- Replicate the look of natural materials at a lower cost
- Weighs only 2-3 lbs. per square foot
- Easy to install
- Low maintenance
- Density can be increased to accommodate acoustic needs
- Perforations available – install with acoustical panels for sound absorption
- Sets fast; can reduce construction schedules
- Durable
- Interior use
- Requires field taping and finishing

TYPICAL APPLICATIONS

- Ceiling and Wall Panels
- Column Covers
- Domes
- Light Coves
- Access Panels
- Coffers
- Moldings
- Historical Restoration

COLORS



Paint Grade
(Unfinished for
field painting)



Custom Colors
Available

CASTWORKS™

Glass Fiber Reinforced Gypsum (GRG/GFRG)
architectural forms

LEED V5

COMMON MATERIALS FRAMEWORK

Human Health

Climate Health

Ecosystem Health

EPD

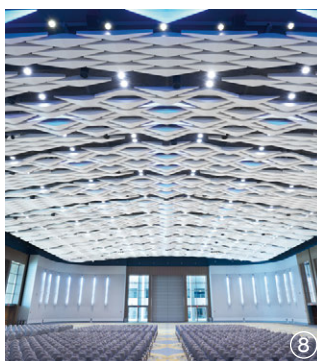
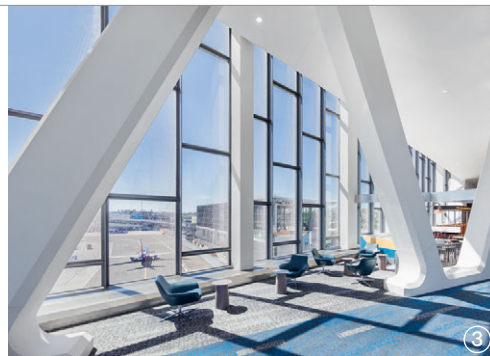
EPD

Circular Economy

OCCUPANT EXPERIENCE

Acoustics

✓



1. CastWorks™ Metaphors® ceiling panels
2. CastWorks access panels
3. CastWorks column covers
4. CastWorks ceiling panels
5. CastWorks domes & trim
6. CastWorks perforated walls
7. CastWorks wall panels
8. CastWorks ceilings
9. CastWorks Walls

CASTWORKS™

Glass Fiber Reinforced Gypsum (GRG/GFRG)
architectural forms

LEED V5

COMMON MATERIALS FRAMEWORK
Human Health

Climate Health
Ecosystem Health

EPD
EPD

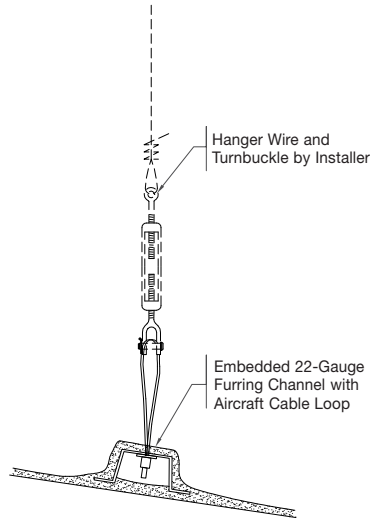
Circular Economy

OCCUPANT EXPERIENCE

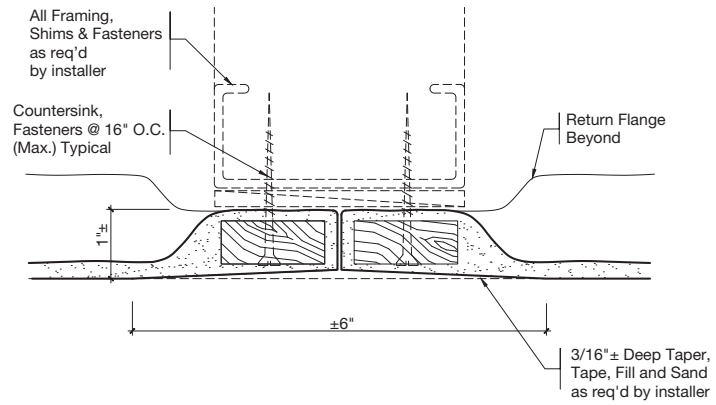
Acoustics



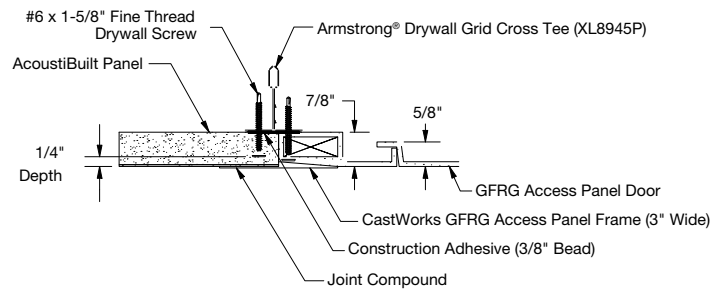
DETAIL DRAWINGS



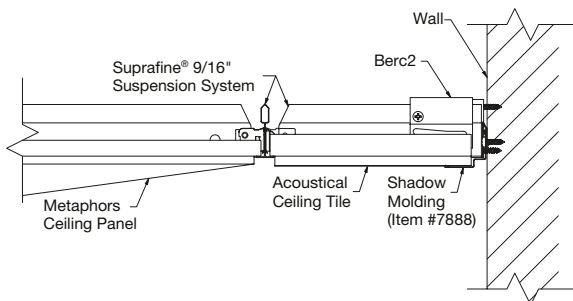
GRG Hanger Detail



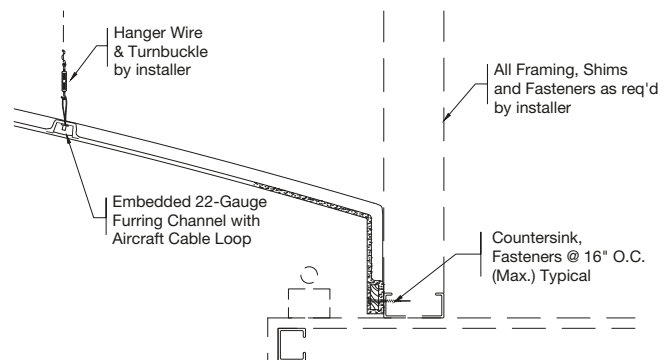
GRG Tape Joint Detail



AcoustiBuilt® Ceiling Panel with CastWorks™ Access Panel



CastWorks Metaphors® Ceiling Panel with Acoustical Panel Border



GRG Dome Edge Detail

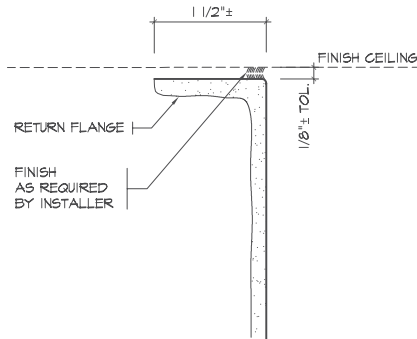
CASTWORKS™

Glass Fiber Reinforced Gypsum (GRG/GFRG)
architectural forms

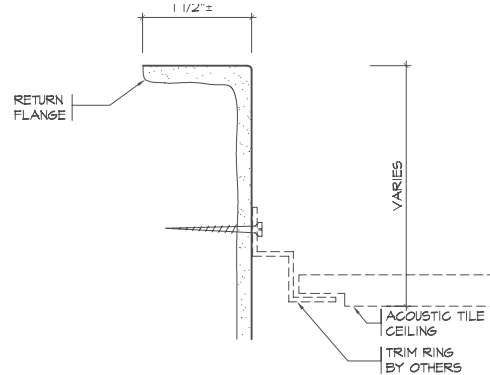
LEED V5

COMMON MATERIALS FRAMEWORK	Climate Health	EPD
Human Health	Ecosystem Health	EPD
	Circular Economy	
OCCUPANT EXPERIENCE	Acoustics	✓

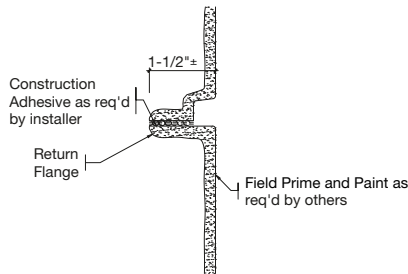
DETAIL DRAWINGS (continued)



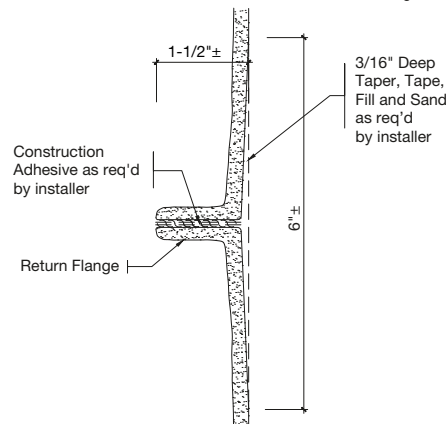
GRG Column Section at Drywall Ceiling



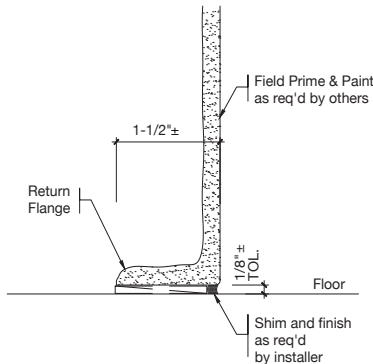
GRG Column Section at Acoustic Tile Ceiling



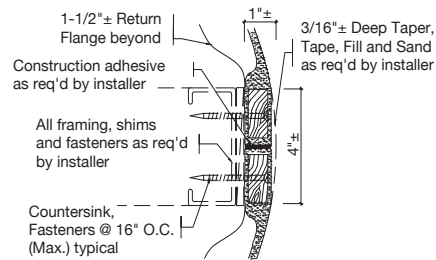
GRG Column Reveal at Stacking Joint



GRG Column Stacking Joint



GRG Column Section at Floor



GRG Column Tape Joint Detail

PHYSICAL DATA

Material

Glass Fiber Reinforced Gypsum (GRG/GFRG) is a composite consisting of gypsum cement and water, reinforced with glass fibers.

Surface Finish

Standard unfinished, paint grade. Can be coated to achieve any desired color and texture.

Fire Performance

Class A Fire Performance per ASTM E84.

Installation Considerations

Install CastWorks™ GRG parts as indicated on approved shop drawings, other recommendations, and the contract requirements. Comply with ASTM Standard C1467 for the installation of GRG.

Use caution and wear appropriate hand, eye, and dust mask protection when handling CastWorks GRG. Refer to installation instructions for complete details.

Application Considerations

In addition to decorative purposes, CastWorks GRG can be used for lighting and acoustic purposes. Its standard thickness is 3/16", but can be customized to 1/2" or 3/4" to achieve a desired reverberation.

Design Support

For custom design assistance contact ProjectWorks® Design Services or visit armstrongceilings.com/projectworks

Warranty

One (1) Year Limited Warranty. Details at armstrongceilings.com/warranty

Weight

2-3 LBS/SF (may vary depending on part design)