

CASTWORKS™

Interior Domes
architectural forms



CastWorks GRG interior dome

CastWorks™ GRG (glass fiber reinforced gypsum) Interior Domes add dimension and elegance.

KEY SELECTION ATTRIBUTES

- Great for adding or restoring historical detail
- Create a custom look using standard solutions
- Can be customized for other shapes, sizes, or materials (Cast Stone, GFRC, or FRP)
- Easy to install and low maintenance
- Economical, lightweight, and simple replacement for traditional plaster
- Interior use
- Can be field painted to achieve any desired color

COLOR








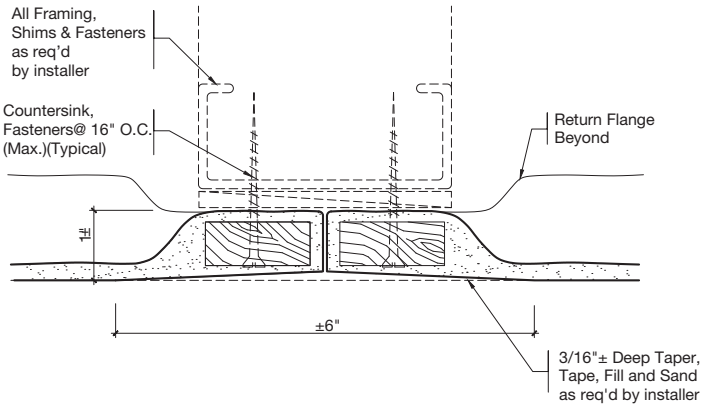
Paint Grade
(Unfinished for
field painting)

CASTWORKS™

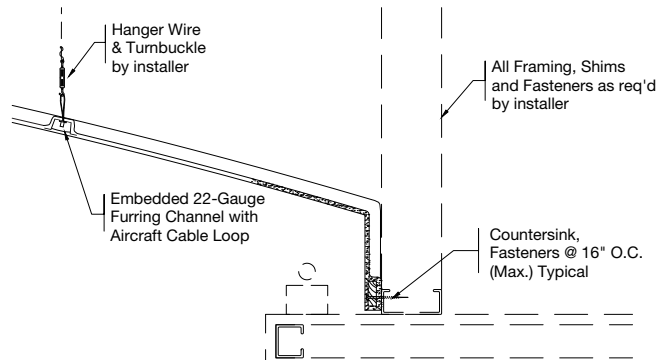
Interior Domes
architectural forms

VISUAL SELECTION

Product Name	PF Number	Diameter (Inches)	Rise (Inches)
Interior Dome	PF-8006	72"	16"
			
	PF-8008	96"	15"
			
	PF-8010	120"	15"
			
	PF-8012	144"	15"
			
	PF-8014	170-1/2"	19"
			



GRG Tape Joint Detail



GRG Dome Edge Detail

PHYSICAL DATA

Material

Glass Fiber Reinforced Gypsum is a composite consisting of gypsum cement and water, reinforced with glass fibers. Complies with ASTM C-1355/C-1355M and ASTM C-1381.

Surface Finish

Standard unfinished, paint grade. Can be coated to achieve any desired color.

Fire Performance

Class A Fire Performance per ASTM E84.

Installation Considerations

Install CastWorks™ parts as indicated on approved shop drawings, other recommendations, and the contract requirements. Comply with ASTM Standard C1467 for installation. Use caution and wear appropriate hand, eye, and dust mask protection when handling CastWorks materials. Refer to installation instructions for complete details.

Design Support

For custom design assistance contact ProjectWorks® Design Services or visit armstrongceilings.com/projectworks

Warranty

One (1) Year Limited Warranty. Details at armstrongceilings.com

Weight

For 3/16" thickness: 2-3 LBS/SF (may vary depending on part design)