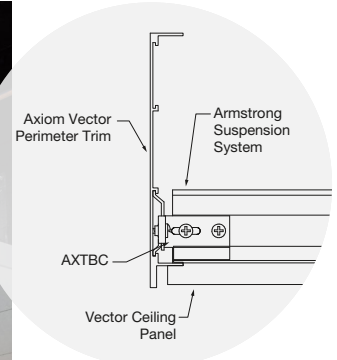


# AXIOM® Vector

## Curved Perimeter Trim



Axiom Vector trim



MetalWorks™ Linear® with Inverted Axiom Vector – Vertically Curved

This trim coordinates perfectly with Armstrong® Vector ceiling panels to mimic the 1/4" reveal with a narrow vertical fin profile.

### KEY SELECTION ATTRIBUTES

- Recommended for use with full-size Vector ceiling panels; preserves factory-cut Vector edge detail
- Adjustable Trim Clip (item 7329 purchased separately) allows for integration of Axiom® Vector with WoodWorks® and MetalWorks™ panels that drop greater than 3/8" below the grid flange. Reference installation instructions for requirements.
- Incorporates the sophisticated grid-hiding visual of a Vector ceiling with a perimeter
- Vertical curving capabilities
- Dynamic curving capabilities
- Factory precision mitering and custom lengths available as special order
- Axiom trim is part of the Sustain™ portfolio and meets the most stringent industry sustainability compliance standards today
- CleanAssure™ family of products – includes disinfectable panels, suspension systems, and trim (Cleaning and CDC-approved disinfecting options available on [armstrongceilings.com/cleaning](http://armstrongceilings.com/cleaning))
- Recommended for use with full-size Vector ceiling panels; preserves factory-cut Vector edge detail
- Colors coordinate with Armstrong® ceiling and suspension systems
- Extruded aluminum trim provides more crisp edge detailing compared to conventional roll-formed steel systems
- Compatible with Armstrong® exposed suspension systems and FrameAll® Drywall Grid
- Custom slotting, perforating, and cutouts available

**COLORS** Due to printing limitations, shade may vary from actual product.

### Standard



\* Colors that are pre-qualified to meet Sustain™ portfolio requirements are available upon request. Other made-to-order colors must be evaluated if sustainability criteria is required. Lead time will increase.

### WOOD-LOOK FINISHES



Coordinates with Effects™ wood-look finishes for MetalWorks Tegular, Vector, and Linear ceilings. For trim solutions for WoodWorks products, please see WoodWorks Trim and Accessories data sheet BPCS-5622.

TechLine 877 276-7876

[armstrongceilings.com/axiomvector](http://armstrongceilings.com/axiomvector)

**Armstrong®**  
World Industries

# AXIOM® Vector

## Curved Perimeter Trim



Declare.

RECYCLED  
CONTENT  
UP TO  
**50%**

LEED V5

Ecomedes Data

### COMMON MATERIALS FRAMEWORK

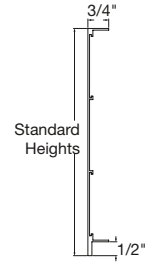
Human Health	Declare Label	Climate Health	EPD
	HPD	Ecosystem Health	EPD
	3rd Party CDPH	Circular Economy	✓

Well Building Standard™ (WELL)  
Living Building Challenge® (LBC)

### VISUAL SELECTION

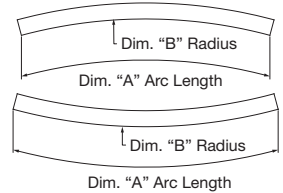
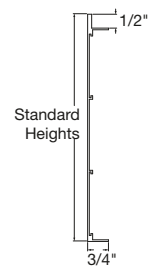
	Item No. ♦	Description	Dimensions (Inches)	Unit of Measure	INCLUDED ACCESSORIES*		MINIMUM BEND RADIUS	
					AXTBC**	AXSPICE2	Inside	Outside
AXIOM® Vector Curved	AX2VECUR _ _ _ _	2" Curved Vector Perimeter Trim	Vary × 3/4 × 2-7/16"	LF	5	1	18"	18"
	AX4VECUR _ _ _ _	4" Curved Vector Perimeter Trim	Vary × 3/4 × 4"	LF	5	2	18"	18"
	AX6VECUR _ _ _ _	6" Curved Vector Perimeter Trim	Vary × 3/4 × 5-13/16"	LF	5	2	18"	18"
	AX8VECUR _ _ _ _	8" Curved Vector Perimeter Trim	Vary × 3/4 × 7-13/16"	LF	5	2	18"	18"

#### Axiom Vector Trim



	Item No. ♦	Description	Dimensions (Inches)	Unit of Measure	MINIMUM BEND RADIUS***	
					Hills	Valleys
Inverted AXIOM® Vector Curved Vertical Curving	AX2VECURSFV _ _ _ _	2" Vertical Curved Inverted Vector Perimeter Trim	Vary × 3/4 × 2-7/16"	LF	22-1/2'	22-1/2'
	AX4VECURSFV _ _ _ _	4" Vertical Curved Inverted Vector Perimeter Trim	Vary × 3/4 × 4"	LF	22-1/2'	22-1/2'
	AX6VECURSFV _ _ _ _	6" Vertical Curved Inverted Vector Perimeter Trim	Vary × 3/4 × 5-13/16"	LF	22-1/2'	22-1/2'

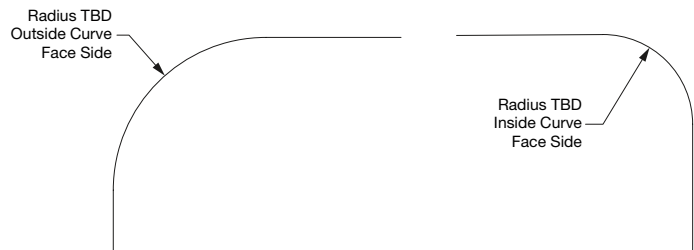
#### Inverted Axiom Vector Trim



- ♦ Add the 2- or 3-letter type and color suffix to the item number when specifying or ordering (Example: AX8VESTR H A \_), add an extra digit "3" before the color suffix if paint is required inside and outside of trim (Example: AX8VESTR 3 H A \_)
- \* Number of Included Accessories is subject to change based on material length
- \*\* AX-V-TBC can be ordered in lieu of AXTBC when necessary, see section details below for examples
- \*\*\* Bend will vary depending on ceiling type. Refer to install instructions for more information.

### AXIOM DYNAMIC CURVING CAPABILITIES

Axiom® Dynamic Curving is a new manufacturing capability that enables straight and curved to be produced on a single, continuous piece of trim (single orientation only). This industry-first capability maximizes material usage with full-length pieces and minimizes joints and visible seams.



### ACCESSORIES

Item No. ♦	Description	
AXSPICE2	Splice Plate with Setscrews	
AXTBC	T-Bar Connection Clip	
AX-V-TBC**	T-Bar Clip for Vector® panel	
7239	Adjustable Trim Clip	
SPTSPLICE	Serpentina Splice (only required for Axiom Vertical Curving)	

\*\*AX-V-TBC can be ordered in lieu of AXTBC when necessary, see section details below for examples

TechLine 877 276-7876

armstrongceilings.com/axiomvector

**Armstrong®**  
World Industries

TRIM & TRANSITIONS – Standard



# AXIOM® Vector

## Curved Perimeter Trim



Declare.

RECYCLED  
CONTENT

UP TO  
**50%**

LEED V5

Ecomedes Data

### COMMON MATERIALS FRAMEWORK

Human Health

Declare Label

Climate Health

EPD

HPD

Ecosystem Health

EPD

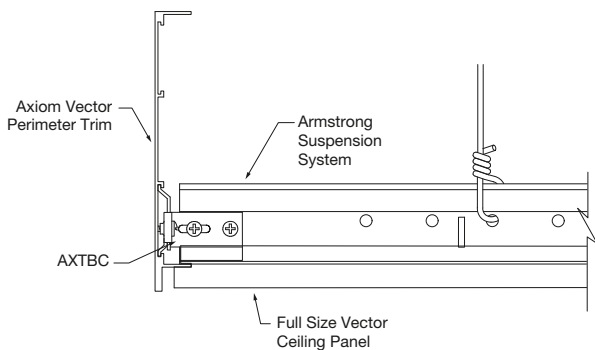
3rd Party CDPH

Circular Economy

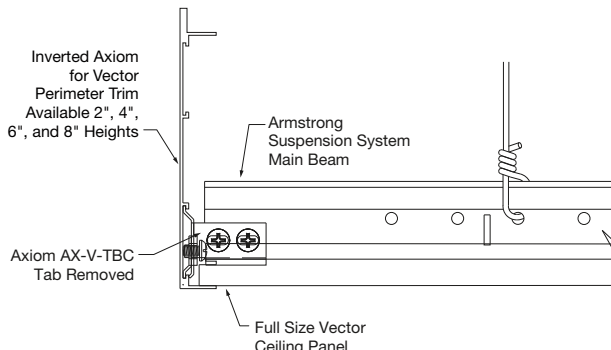
✓

Well Building Standard™ (WELL)  
Living Building Challenge® (LBC)

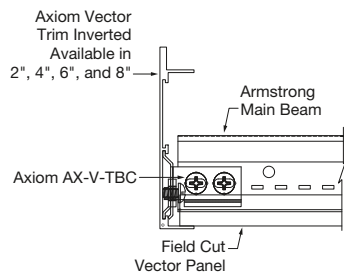
### SECTION DETAILS CAD drawings available on [armstrongceilings.com/axiom](http://armstrongceilings.com/axiom)



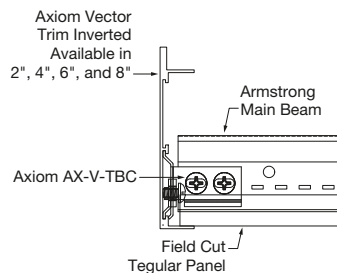
① Full Size Vector Ceiling Panel with Axiom Vector Perimeter Trim



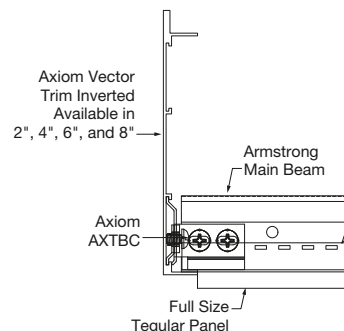
② Full Size Vector Panel with Inverted Axiom Vector Perimeter Trim



③ Cut Vector Panel with Inverted Axiom Perimeter Trim



④ Cut Tegular Panel with Inverted Axiom Vector Perimeter Trim



⑤ Full Size Tegular Panel with Inverted Axiom Vector Perimeter Trim

### PHYSICAL DATA

**Material**  
Commercial quality 6063 aluminum alloy

**Surface Finish**  
3SC – 360 Painted Standard Colors  
(reference colors listed above)  
3ZB/3ZW – 360 Painted Blizzard/Charcoal Finish  
3RAL – 360 Painted RAL® Colors  
3XX – 360 Painted Custom Colors  
SC – Standard Colors  
(reference colors listed above)  
ZW/ZB – Blizzard/Charcoal Finish  
RAL – RAL  
XX – Custom Colors  
ZZ – Wood-look  
YY – Architectural Film Finish (not available in curved)

**Cleaning & Disinfecting**  
Cleaning and CDC approved disinfecting options available on [armstrongceilings.com/cleaning](http://armstrongceilings.com/cleaning)

**Design Considerations**  
Physical product samples for standard and custom colors are available upon request. Please refer to the physical product sample prior to making a final selection. While we strive to ensure exact color matches, various factors such as differences in materials, texture, substrate porosity, painting processes, lighting, and observer subjectivity can all affect how paint colors appear on ceiling and wall panels, suspension systems, and trim products. Due to these and other differences, ceiling and wall panels, trim products, and suspension systems with the same color name will coordinate but may not be an exact color match. Product is dye-lotted. Order sufficient initial quantities and attic stock to minimize possible color variation.

All acoustical grid and Axiom trim accessories (a.k.a. clips) are supplied as unpainted items. Exposed clips will need to be field painted after installation, if required for the project. This ensures accessories meet the tested performance criteria and adhere to AWI installation instructions and warranted products or systems.

**Warranty**  
10-Year Limited Warranty; 30-Year System Warranty

**Profile**  
Four standard height profiles available with 3/4\" horizontal flange(s)

**Cross Tee/Main Beam Interface**  
Flush fit

**End Detail**  
Splice with screws

TechLine / 877 276-7876  
[armstrongceilings.com/axiomvector](http://armstrongceilings.com/axiomvector)  
BPCS-6929-1125

LEED® is a registered trademark of the U.S. Green Building Council; Declare® and Living Building Challenge® (LBC) are registered trademarks of the International Living Future Institute; WELL™ and WELL Building Standard are trademarks of the International WELL Building Institute; all other trademarks used herein are the property of AWI Licensing LLC and/or its affiliates © 2025 AWI Licensing LLC

**Armstrong®**  
World Industries