

AXIOM® Light Covers – Indirect Field straight



▲ Axiom® Indirect Field Light Covers

Axiom® Indirect Field Light Covers install 90% faster with just 10% of the labor of traditional light covers.

KEY SELECTION ATTRIBUTES

- Axiom® Indirect Field Light Covers offer predictable lighting performance and perfect integration with all Armstrong suspension systems
- Axiom trim is part of the Sustain® portfolio and meets the most stringent industry sustainability compliance standards today
- Adjustability of the drywall vertical leg allows for field modification
- CleanAssure™ family of products – includes disinfectable panels, suspension systems, and trim
- Designed with a notched channel for perfect integration with Axis Cove Perfekt™ Lighting, and Vode® ZipWave™ Lighting fixtures. All fixtures deliver aim free predictable lighting solutions
- Pre-fabricated corners
- Ability to cut to the length desired in the field
- 10-Year Limited Warranty, 30-Year System Warranty

TYPICAL APPLICATIONS

- Offices
- Corridors
- Restrooms
- Healthcare
- Lobbies
- Boardrooms
- Retail
- Retrofits

LIGHTING FIXTURES

Compatible with:
Axis Lighting and Vode® Lighting



COLOR



VISUAL SELECTION

Straight: Specify Field Light Cove Item Number

Example: AXIFLCKKE – Axiom® Indirect Field Light Cove, Ceiling-to-Ceiling Mounting with a Knife Edge® Detail for ACT

Light Cove Type ♦	Mounting	Edge Detail
AXIFL	--	--
	CC – Ceiling-to-Ceiling	4 – 4" Classic
	CW – Ceiling-to-Wall	KE – Knife Edge ACT KD – Knife Edge Drywall

♦ Light Covers are 10' in length

Curves: Specify Field Light Cove Curved Item Number (NOTE – only use this section if you need curves on your project)

Example: AXIFL4CUR – Indirect Field Light Cove, 4" Classic Light Cove Curved

Light Ledge Type ♦	Edge Detail	Options
AXIFL __	--	--
	4 – 4" Classic	CUR – Curved

MINIMUM BEND RADIUS FOR INDIRECT LIGHT LEDGE
Inside: 60" minimum
Outside: 60" minimum

♦ Light Ledge curves are 12" in length and 12" in width

Corners: Specify Field Light Cove Corner Item Number

(NOTE – only use this section if you need corners on your project)

Example: AXIFLCWKDOC – Axiom® Indirect Field Light Cove, Ceiling-to-Wall Mounting with a Knife Edge for Drywall Edge Detail, Outside Corner

Light Cove Type ♦	Mounting	Edge Detail	Options
AXIFL	--	--	--
	CC – Ceiling-to-Ceiling	4 – 4" Classic	IC – Inside Corner
	CW – Ceiling-to-Wall	KE – Knife Edge ACT KD – Knife Edge Drywall	OC – Outside Corner

♦ Light Covers are 10' in length

AXIOM® Light Covers – Indirect Field straight

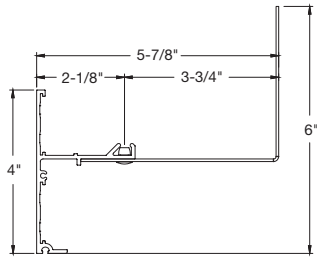


Calculate sustainability with GreenGenie™
armstrongceilings.com/greengenie

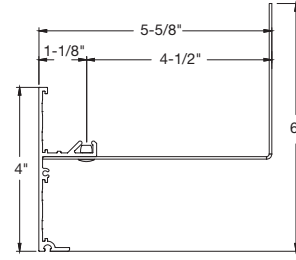


LOCATION DEPENDENT

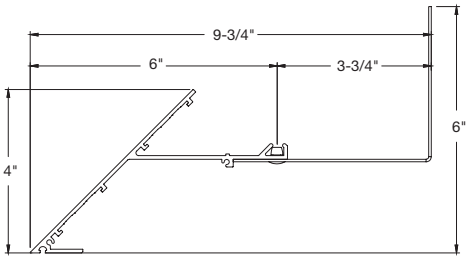
EDGE DETAILS



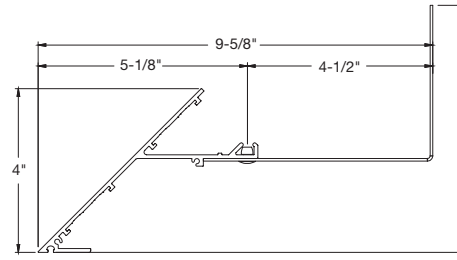
Ceiling-to-Ceiling Classic



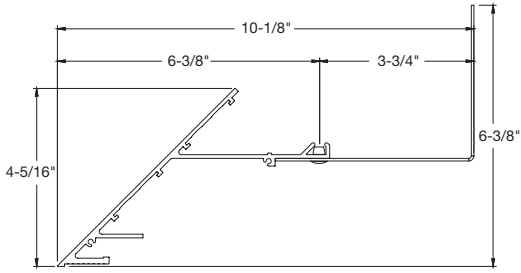
Ceiling-to-Wall Classic



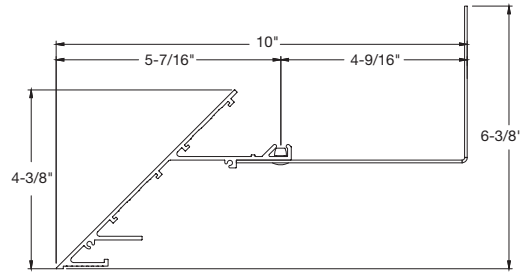
Ceiling-to-Ceiling Knife Edge®



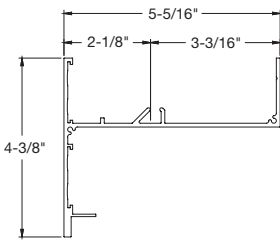
Ceiling-to-Wall Knife Edge®



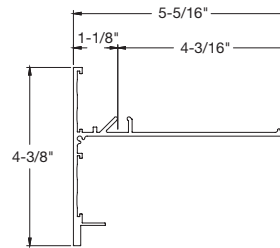
Ceiling-to-Ceiling Drywall Knife Edge®



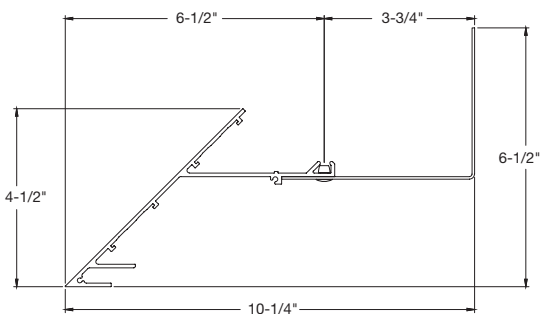
Ceiling-to-Wall Drywall Knife Edge®



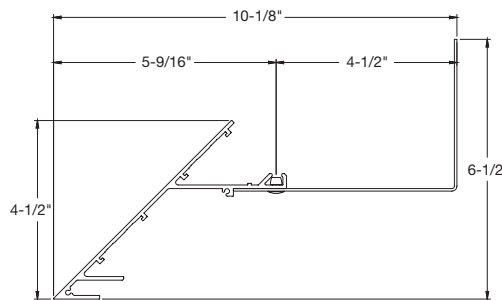
4" Classic – Ceiling-to-Ceiling for Vector® Panel Installations



4" Classic – Ceiling-to-Wall for Vector® Panel Installations



Knife Edge® – Ceiling-to-Ceiling



Knife Edge® – Ceiling-to-Wall



AXIOM® Light Covers – Indirect Field straight



Declare.

LEED WELL™ LBC

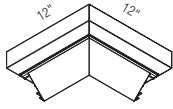
50% RECYCLED CONTENT

- energy management
- construction waste mgmt
- regional materials
- design for flexibility
- EPD
- recyclable/extended producer resp.
- biobased materials
- recycled content
- sourcing of raw materials
- material ingredient reporting
- low emitting materials
- lighting quality
- acoustics

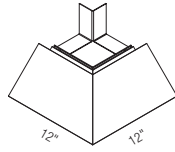
Calculate sustainability with GreenGenie™
armstrongceilings.com/greengenie

LOCATION DEPENDENT

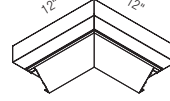
CORNERS FOR KNIFE EDGE® PROFILES



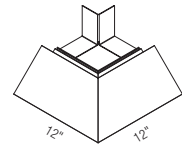
Ceiling-to-Ceiling Drywall Inside Corner



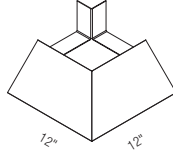
Ceiling-to-Ceiling Drywall Outside Corner



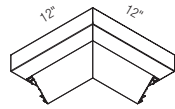
Ceiling-to-Ceiling Acoustical Inside Corner



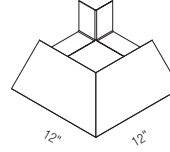
Ceiling-to-Ceiling Acoustical Outside Corner



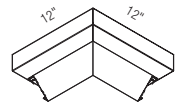
Ceiling-to-Wall Drywall Inside Corner



Ceiling-to-Wall Drywall Outside Corner

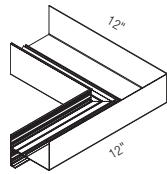


Ceiling-to-Wall Acoustical Inside Corner

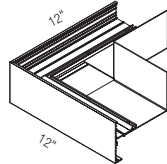


Ceiling-to-Wall Acoustical Outside Corner

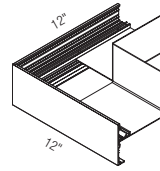
CORNERS FOR CLASSIC PROFILES



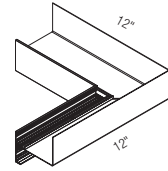
Classic Ceiling-to-Ceiling Inside Corner



Classic Ceiling-to-Wall Inside Corner



Classic Ceiling-to-Ceiling Outside Corner



Classic Ceiling-to-Wall Outside Corner

ACCESSORIES

Item No.	Description
AXCCLT45	45 Degree T-Bar Connector Twist
	For use with Knife Edge Covers
AXBTSTR	Axiom Bottom Drywall Trim
	For use with 4" Classic Edge Covers only
AXTBC	T-Bar Connector Clip
	For use with 4" Classic Edge Covers only
AX4SPLICE	Axiom Splice Plate

Item No.	Description
151220E	12" Knurled Angle Molding
DW90C	90° Drywall Angle Clip
7857	Reverse Angle Molding



TRIM & TRANSITIONS – Standard

AXIOM® Light Covers – Indirect Field straight



LEED® WELL™ LBC

50% RECYCLED CONTENT

energy management construction waste mgmt regional materials design for flexibility EPD recyclable/recycled content biobased materials recycled content sourcing of raw materials material ingredient reporting low emitting materials lighting quality acoustics

Calculate sustainability with GreenGenie™ armstrongceilings.com/greengenie

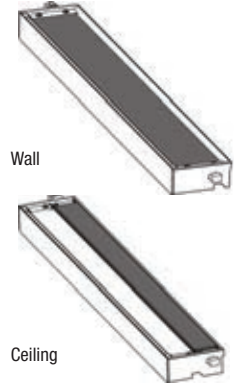
LOCATION DEPENDENT

LIGHTING PARTNERS

Lighting and diffuser solutions are available through partner companies



- Outstanding Aesthetics**
- No shadows. No bright spots. No color shifting.
- Easy Specification**
- Aim-free luminaire. No need for complex details. Less trade coordination.
- Unparalleled Performance**
- Twice the efficiency of other LED cove products.
 - Wide distribution using SurroundLite™ technology
- Worry-free Installation & Maintenance**
- Foolproof keyed mounting. Up to 90% less labor.



For compatible lighting details, visit axislighting.com



ZipWave™ LED 707

Exceptional Performance

- Low, standard and high outputs available
- High output over 1200 lm/ft.
- Customizable output and wattage options

Foolproof Installation

- Drop-in, tool-free installation with plug and play connections
- Runs 100' or more from one 120v power feed
- Section lengths in exact 1' (305mm) increments



For compatible lighting details, visit vode.com/zipwave-led-707

PHYSICAL DATA

Material
Commercial quality 3003 aluminum alloy

Surface Finish
Factory-applied baked polyester paint finish

Cleaning & Disinfecting
Cleaning and CDC approved disinfecting options available on armstrongceilings.com/cleaning

Warranty
10-Year Limited Warranty; 30-Year System Warranty

Profile
Various options with both Ceiling-to-Wall and Ceiling-to-Ceiling Light Ledges in a wide range of sizes with 3/4" horizontal flange.

Cross Tee/Main Beam Interface
Flush fit

End Detail
Splice with screws

TechLine / 1 877 276-7876
armstrongceilings.com/lightcovers
BPCS-5656-621

LEED® is a registered trademark of the U.S. Green Building Council; Declare® and Living Building Challenge® (LBC) are trademarks of the International Living Future Institute®; WELL™ and WELL Building Standard are trademarks of the International WELL Building Institute; Axis and CovePerfekt™ are trademarks of Axis Lighting; Vode® and ZipWave™ are trademarks of Vode Lighting LLC; all other trademarks used herein are the property of AWI Licensing LLC and/or its affiliates © 2021 AWI Licensing LLC



TRIM & TRANSITIONS – Standard