

DRYWALL GRID SYSTEMS

6' DGS Cross Tee



SUSTAIN™
High Performance
Sustainable
Ceiling Systems

Declare™
Living Building
Challenge Compliant

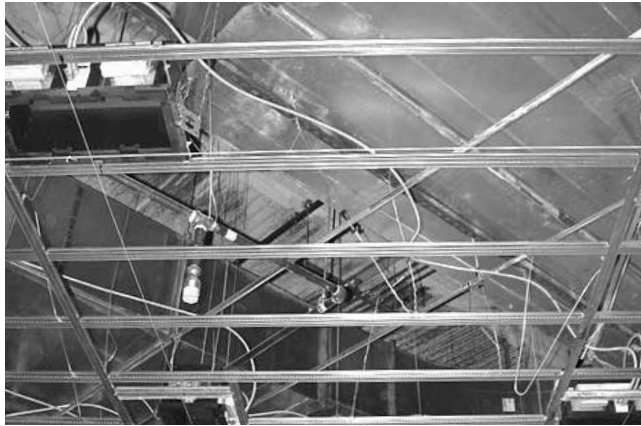
UP TO **30%** RECYCLED CONTENT
ALUMINUM

LEED®

- energy management
- construction waste mgmt
- regional materials
- design for flexibility
- EPD
- recyclable/extended producer resp.
- biobased materials
- recycled content
- sourcing of raw materials
- material incident reporting
- low emitting materials
- lighting quality
- acoustics

Calculate LEED contribution at armstrongceilings.com/greengenie

▲ LOCATION DEPENDENT



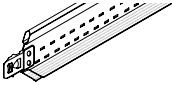
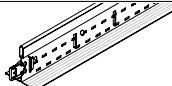
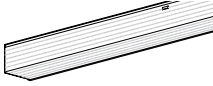
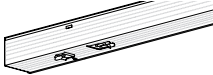
This coordinates perfectly with Armstrong Ceilings Vector® panels to mimic the 1/4" reveal with a narrow vertical fin profile.

KEY SELECTION ATTRIBUTES

6' DGS Cross Tee: Speeds installation and reduces material costs.

- 6' spacing on main beams results in cost savings of 10-15% by reducing material, hanger wire, and time to install
- Supports up to 2 layers of gypsum board (see load chart for tee and wire spacing)
- Extra rout holes to accommodate F-Type light fixtures
- Rotary stitching on double web adds strength and stability
- Deep knurled surface for easy screw insertion
- G40, .018" metal thickness meets ASTM C645
- UL® fire rated

VISUAL SELECTION

Item No. ♦	Length/Item Description	Face Dimensions	Profile Height	Simple Span Uniform Load at L/240 (lbs./LF)	
AXIOM Transitions (no elevation change)					
<input type="checkbox"/> XL8965	6' Drywall Grid Cross Tee	1-1/2"	1-1/2"	6 ft. Span – 6.4	
<input type="checkbox"/> HD8906	12' Tee (Knockouts 8" O.C.)	1-1/2"	1-1/2"	2" Span – 143 3" Span – 57.3 4" Span – 28.14	
<input type="checkbox"/> KAM10	10' Knurled Angle Molding	1-1/4" x 1-1/4"	—	—	
<input type="checkbox"/> KAM12/	12' Knurled Angle Molding	1-1/4" x 1-1/4"	—	—	
<input type="checkbox"/> KAM12HRC					
<input type="checkbox"/> KAM1510	10' Knurled Angle Molding	1-1/2" x 1-1/2"	—	—	
<input type="checkbox"/> KAM1512	12' Knurled Angle Molding	1-1/2" x 1-1/2"	—	—	
<input type="checkbox"/> KAM21020	10' Knurled Angle Molding	2" x 2"	—	—	
<input type="checkbox"/> KAM21025	12' Knurled Angle Molding	2" x 2"	—	—	
<input type="checkbox"/> LAM12/	12" Locking Angle Molding	1-1/4" x 1-1/4"	—	—	
<input type="checkbox"/> LAM12HRC	(Locking tabs 8" O.C.)				

Membrane Load Values

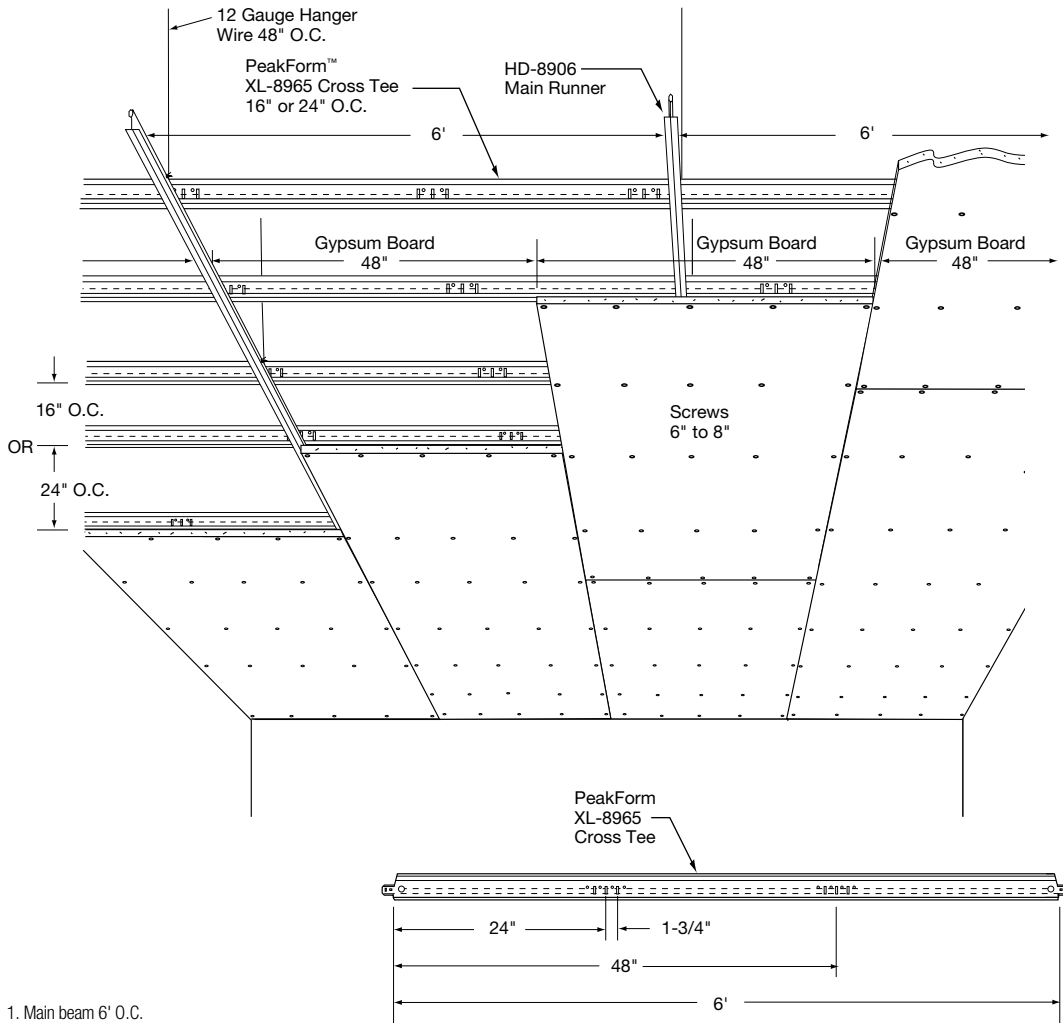
Component Combination	Max Load in lbs/SF (L/240)	Max Load in lbs/SF (L/240)	Max Load in lbs/SF (L/240)	Max Load in lbs/SF (L/240)
	Wires 48" O.C. / Tees 24" O.C.	Wires 48" O.C. / Tees 16" O.C.	Wires 42" O.C. / Tees 16" O.C.	Wires 48" O.C. on Main Beams / Wires mid-span on Tees/Tees 24" O.C.
HD8906/XL8965 (Main Beams 6' O.C.)	3.20	4.66	4.8	9.38

NOTE: 5/8" drywall weighs 2.4 lbs/SF or less (tees installed 16" or 24" on center)
1/2" drywall weighs 2.0 lbs/SF or less (tees installed 16" on center only)
*For other combinations, consult TechLine at 1 877 276-7876

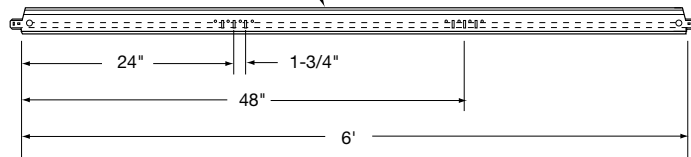
DRYWALL GRID SYSTEMS

6' DGS Cross Tee

INSTALLATION NOTES



1. Main beam 6' O.C.
2. Hanger wire 2', 3', or 4' O.C.
3. Rout holes for Type F light fixture
4. Reduction in hanger wire and main beam
5. UL® Fire Rated: Fire Guard™ components meet UL Design Listings D501, D502, G523, G524, G526, G527, G528, G529, G531, J502, L502, L508, L513, L515, L525, L526, L529, L564, P501, P506, P507, P508, P509, P510, P513, P514.
6. Faster installation
7. Tees 16" O.C. support two layers of 5/8" gypsum board (with hanger wire 42" O.C. along main beams)
8. Tees 24" O.C. support one layer of 5/8" gypsum board (with hanger wire 48" O.C. along main beams)
9. Gypsum board attached to cross tees
10. Bridging on cross tees requires extra wire for weight of light fixtures, diffusers, and other mechanical



Ideal for 15' wide Bedrooms in Condos and Hotels

Need only two rows of main beams 6' on center. Then cut border tee in half (no waste).

