

3form Elements – Hush Stack

Acoustic Wall Panel



3form Elements – Hush Stack Leafy pattern in Emerald and Mustard

Created with precision, intricate bevel cuts into a front and back layer of Sola Felt™ form a visually striking surface that adds extra depth and dimension.

KEY SELECTION ATTRIBUTES

- One 44" x 96" x 0.75" panel
- Made using our sustainable, high-performance Sola Felt™ with 50% post-consumer recycled PET
- NRC rating of 0.65
- Easily installs directly to walls or vertical surfaces
- Multi-functional tackable surface
- Choose Sola Felt colors for front and back layers. Available in 22 standard colors.
- Choose from 10 pattern options to complement any aesthetic

3form Elements – Hush Stack

Acoustic Wall Panel

SOLA FELT™ COLORS Due to dye lot variations, shade may vary from actual product.



Zinc (FZN)



Nickel (FNI)



Platinum (FPL)



Armor (FAR)



Steel (FSL)



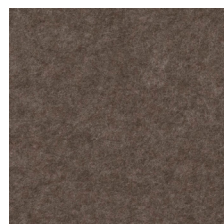
Cast (FCA)



Dune (FDN)



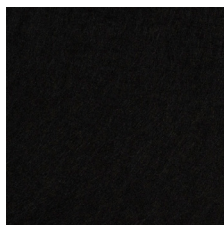
Driftwood (FDW)



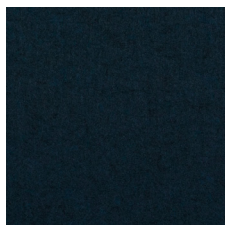
Silt (FSI)



Mineral (FML)



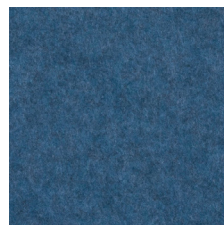
Ebony (FBN)



Nightfall (FNF)



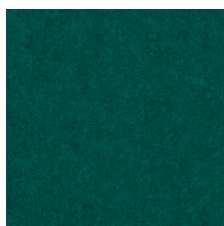
Admiral (FAD)



Dusk (FDK)



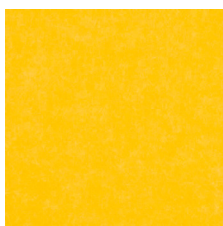
Steelblue (FSB)



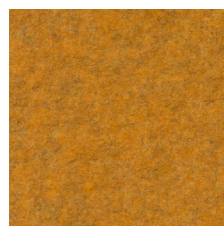
Emerald (FEM)



Mustard (FMU)



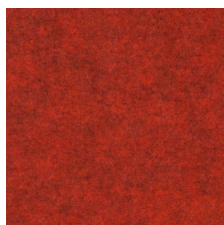
Citrine (FCR)



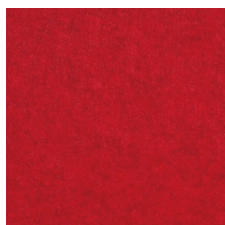
Ochre (FOC)



Aries (FAS)



Saffron (FSF)



Jasper (FJP)

3form Elements – Hush Stack

Acoustic Wall Panel

VISUAL SELECTION

	Item No. ♦	Nominal Dimension (W × L × Depth)
HUSH STACK	See Below	44 × 96 × 3/4"

PERFORMANCE

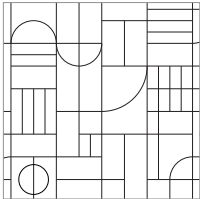
Dots represent high level of performance.

Fire Rating	Certified Low VOC Emissions
Class B	*

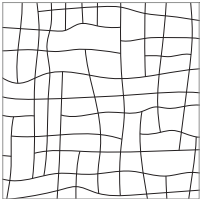
ACOUSTICAL INFORMATION

NRC
0.65

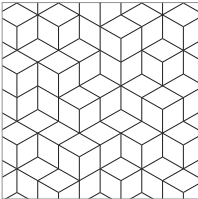
PATTERN OPTIONS



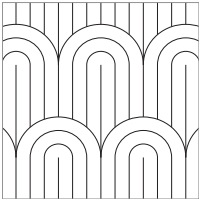
Bauwows
BPAS1001D01_ ♦



Connection Square
BPAS1001D02_ ♦



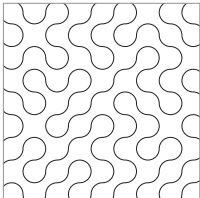
Cube
BPAS1001D03_ ♦



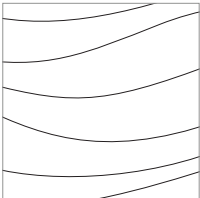
Deco
BPAS1001D04_ ♦



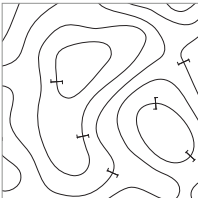
Leafy
BPAS1001D05_ ♦



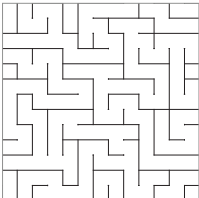
Meander
BPAS1001D06_ ♦



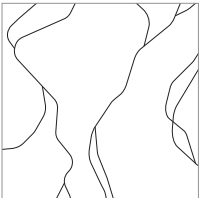
Swell
BPAS1001D07_ ♦



Terra
BPAS1001D08_ ♦



Twist
BPAS1001D09_ ♦



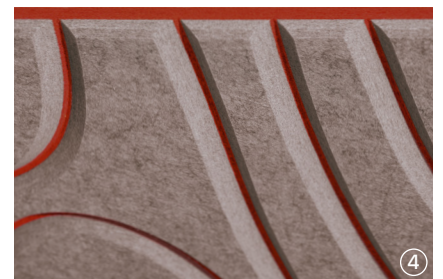
Vein
BPAS1001D10_ ♦

♦ When specifying or ordering, include the appropriate 3-digit color suffix for the front finish and a 3-digit color suffix for the back finish (e.g. BPAS1001D01 E Z N E N I)
For custom sizes, shapes, or colors, contact ASQuote@armstrongceilings.com.

3form Elements – Hush Stack

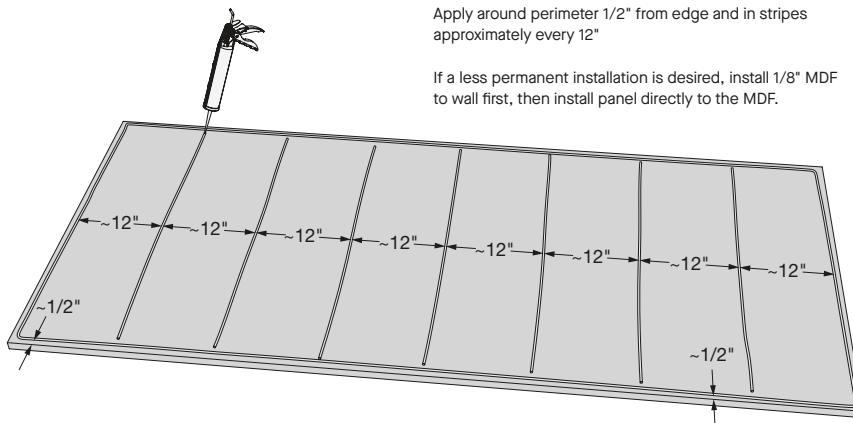
Acoustic Wall Panel

DESIGN OPTIONS



1. Terra pattern in Driftwood and Saffron
2. Cubed pattern in Ebony and Cast
3. Deco pattern in Mineral and Nickel
4. Terra pattern in Driftwood and Saffron

INSTALLATION



Applying Adhesive to Panel:

- Directly applied to the wall
- General liquid nails/construction adhesive or brad nails can be used (none included/sold)

Considerations:

- Can make cuts/cut outs with a sharp blade/box cutter (score and punch out)

PHYSICAL DATA

Material

3/4" thick (19mm) non-woven layered and formed polyester felt (PET) fiber panels with color throughout. Achieved with two 3/8" panels adhered together.

Fire Performance

US Only: Flame Spread Index 26-75. Smoke Developed Index 450 or less. Class B per ASTM E84.

Application Considerations

Panel color and texture may vary from order to order; adequate attic stock should be ordered. Due to the nature of recycled materials, small dark fibers may be visible on light panels.

Hush Stack panels should not be installed near sources of heat greater than 158° F.

Acoustical Performance

Tested per ASTM C423 and mounted in accordance with ASTM E795. Sound absorption of 0.65 NRC. Contact TechLine for details at techline@armstrongceilings.com

VOC Emissions

Third-party certified compliant with California Department of Public Health CDPH/EHLB/Standard Method Version 1.2, 2017. This standard is the guideline for low emissions in LEED®, WELL Building Standard®, Living Building Challenge® (LBC), CalGreen Title 24, ANSI/ASHRAE/USGBC/IES Standard 189; ANSI/GBI Green Building Assessment Protocol.

Installation Considerations

Quick and simple installation involves adhering panels to the wall with brad nails or construction adhesive. For a less permanent installation, add MDF to wall first, then adhere to MDF. See installation instructions for details.

Lead Times

4 week lead time (not including transit). All lead times are approximate and dependent upon current supply chains.

Cleaning and Disinfecting

Sola Felt should be cleaned regularly by vacuuming or using a soft brush to prevent dirt buildup and weathering; slight fiber shedding is normal. For liquid stains, promptly blot with a damp cloth or mild detergent, avoiding strong solvents, abrasives, or soaking the material. See installation instructions for complete cleaning guidelines.

Warranty

3form 2-year Limited Warranty

Weight: Pieces/ Carton

0.6 lbs/SF

Ordered by the piece (1pc/ctn)