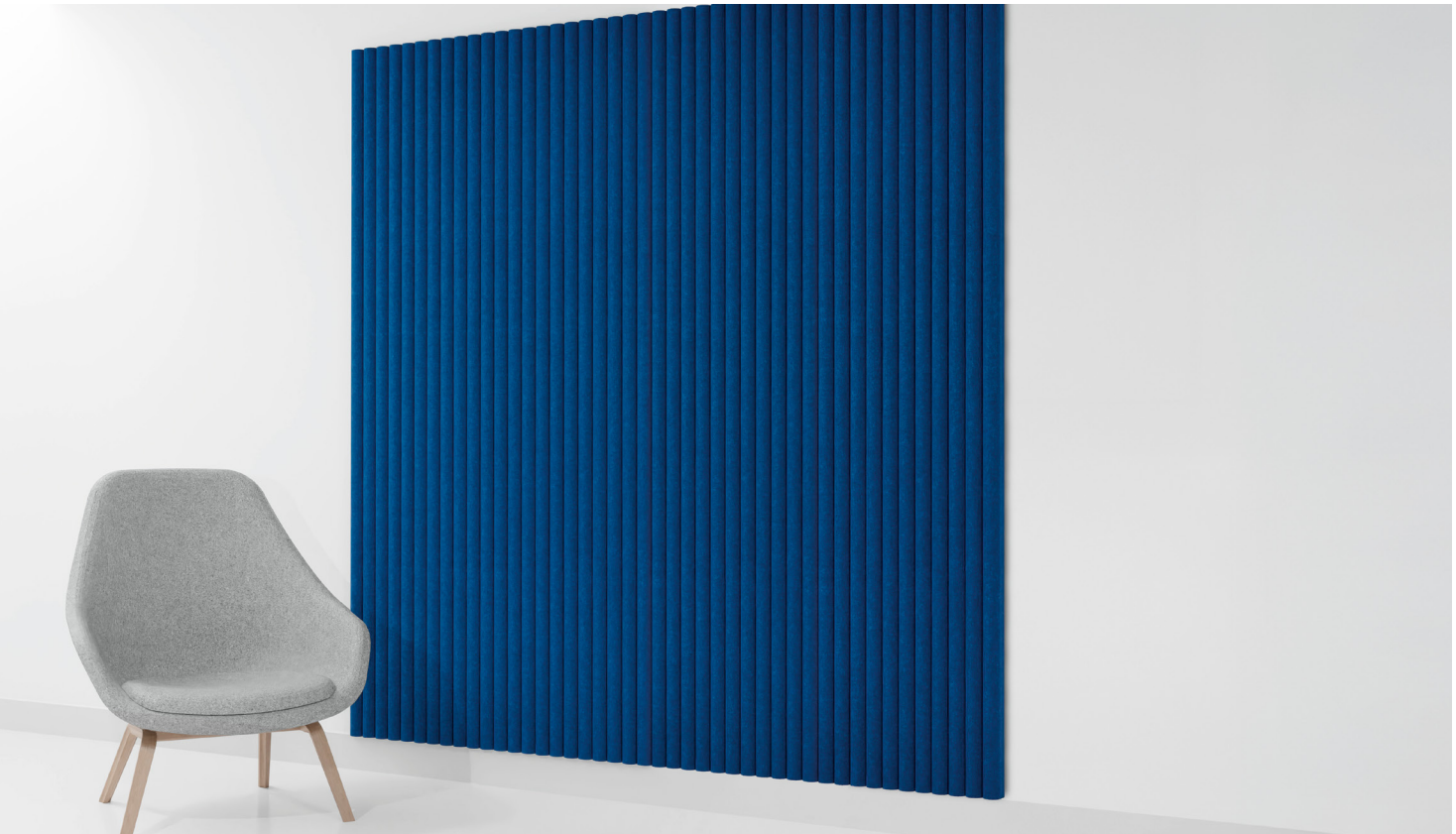


# 3form Elements – Flute

## Sound Absorbing Wall Panels



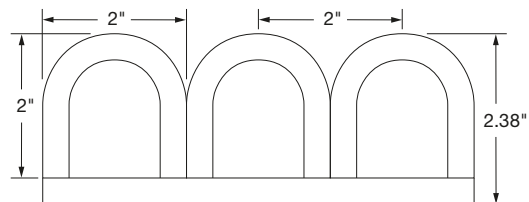
Flute Wall Panels in Admiral

Flute wall panels offer a refined approach to sound management, combining elegant design with exceptional functionality.

### KEY SELECTION ATTRIBUTES

- Made using our sustainable, high-performance Sola Felt™ with 50% post-consumer recycled PET
- NRC rating of 0.95 for excellent sound absorption
- Available in 22 Sola Felt™ colors
- Easy-to-install flush mounted for walls
- Kit includes slats and end caps for clean, finished visuals

### DETAIL

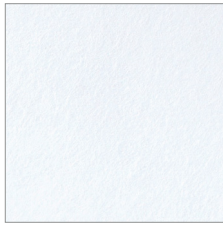


Flute panel with 2" fluted blades

# 3form Elements – Flute

## Sound Absorbing Wall Panels

**SOLA FELT™ COLORS** Due to dye lot variations, shade may vary from actual product.



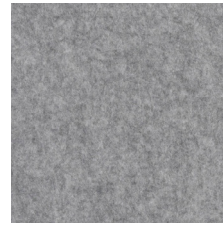
Zinc (FZN)



Nickel (FNI)



Platinum (FPL)



Armor (FAR)



Steel (FSL)



Cast (FCA)



Dune (FDN)



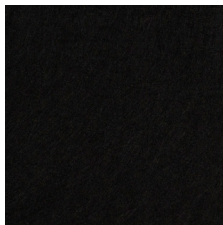
Driftwood (FDW)



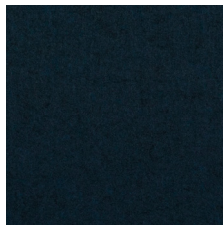
Silt (FSI)



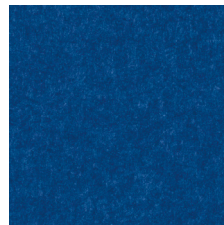
Mineral (FML)



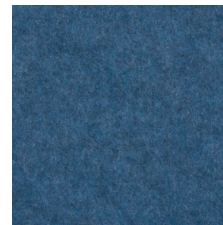
Ebony (FBN)



Nightfall (FNF)



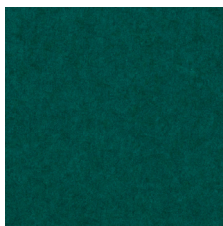
Admiral (FAD)



Dusk (FDK)



Steelblue (FSB)



Emerald (FEM)



Mustard (FMU)



Citrine (FCR)



Ochre (FOC)



Aries (FAS)



Saffron (FSF)



Jasper (FJP)

# 3form Elements – Flute

## Sound Absorbing Wall Panels

### VISUAL SELECTION

### PERFORMANCE

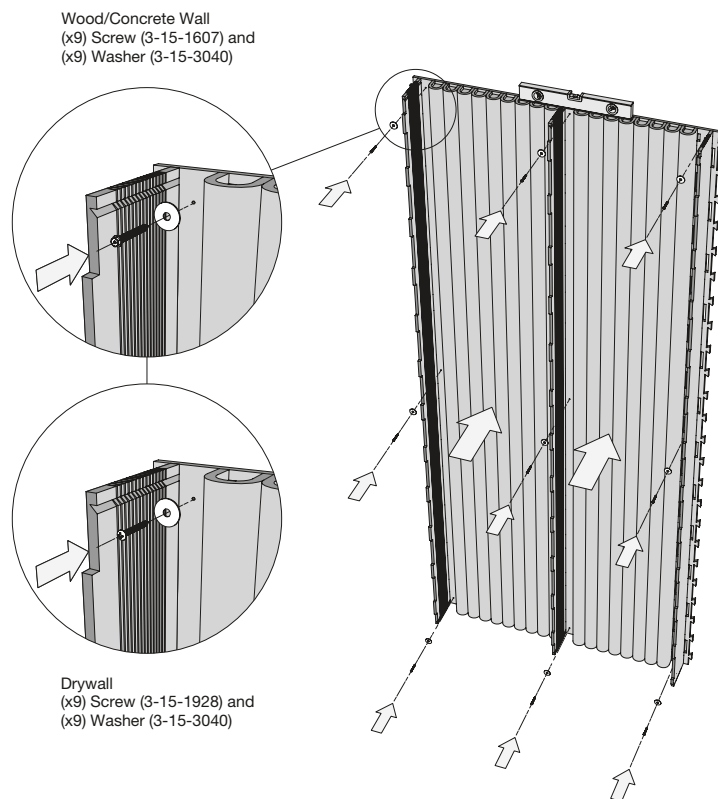
Dots represent high level of performance.

### ACOUSTICAL INFORMATION

	Item No. ◆	Wall Mount	Nominal Dimension (W × L × Depth)	Fire Rating	Certified Low VOC Emissions	NRC
FLUTE Wall Panels	BPAS1004A01_ _ _	Wood or Concrete	44 × 96 × 2.38"	Class B	*	0.95 *
	BPAS1004A02_ _ _	Drywall	44 × 96 × 2.38"	Class B	*	0.95 *
	BPAS1004A03_ _ _	Universal	44 × 96 × 2.38"	Class B	*	0.95 *

◆ When specifying or ordering, include the appropriate 3-letter color suffix (e.g. BPAS1004A01 E Z N). For custom sizes, shapes, or colors, contact ASQuote@armstrongceilings.com.

### INSTALL WALL CONNECTIONS



Install from top to bottom. Level as you go.  
Install (x9) fasteners through the backer panel into appropriate anchors.

### PHYSICAL DATA

**Material**  
3/8" thick (9mm) non-woven layered and formed polyester felt (PET) fiber panels with color throughout.

**Fire Performance**  
US Only: Flame Spread Index 26-75. Smoke Developed Index 450 or less. Class B per ASTM E84.

**Application Considerations**  
Panel color and texture may vary from order to order; adequate attic stock should be ordered. Due to the nature of recycled materials, small dark fibers may be visible on light panels.

Flute wall panels should not be installed near sources of heat greater than 158° F.

**Acoustical Performance**  
Tested per ASTM C423 and mounted in accordance with ASTM E795. Sound absorption of 0.95 NRC. Contact TechLine for details at techline@armstrongceilings.com

**VOC Emissions**  
Third-party certified compliant with California Department of Public Health CDPH/EHLB/Standard Method Version 1.2, 2017. This standard is the guideline for low emissions in LEED®, WELL Building Standard®, Living Building Challenge® (LBC), CalGreen Title 24, ANSI/ASHRAE/USGBC/IES Standard 189; ANSI/GBI Green Building Assessment Protocol.

**Installation Considerations**  
Quick and simple installation involves screwing block directly to wall. Felt flaps close flush with the block to hide screws.

**Lead Times**  
4 week lead time (not including transit). All lead times are approximate and dependent upon current supply chains.

**Cleaning and Disinfecting**  
Sola Felt™ should be cleaned regularly by vacuuming or using a soft brush to prevent dirt buildup and weathering; slight fiber shedding is normal. For liquid stains, promptly blot with a damp cloth or mild detergent, avoiding strong solvents, abrasives, or soaking the material. See installation instructions for complete cleaning guidelines.

**Warranty**  
3form 2-year Limited Warranty

**Weight; Pieces/Carton**  
1.28 LBS/SF  
Ordered by the piece (1 piece/carton)