

WOODWORKS® Ceilings

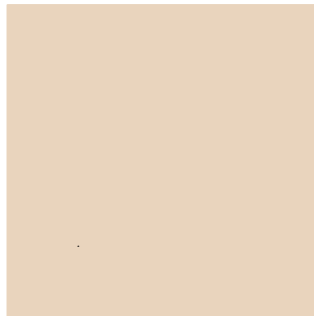
Standard Perforations

Key for Perforation Names (Example – Rg 6006)

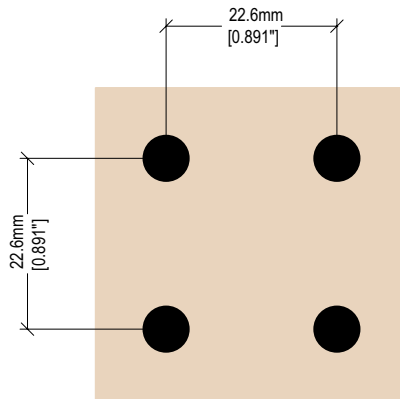
R	Hole shape (R = round / Q = square / L = oval / T = trapezoid)
g	Pattern (g = straight / d = diagonal / v = staggered)
60	Diameter of hole size in mm (Example – 6 mm)
06	% open area

COMPOSITE WOOD PERFORATIONS – CONCEALED, TEGULAR & VECTOR®

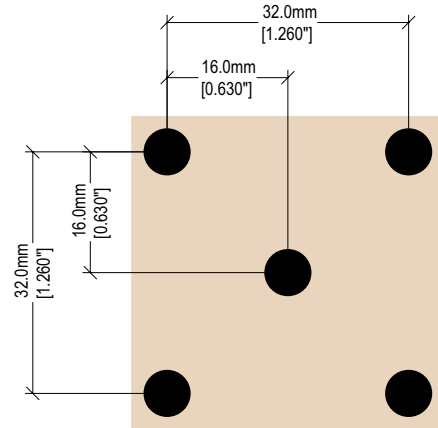
Standard Perforations Actual 1:1 scale shown unless otherwise noted.



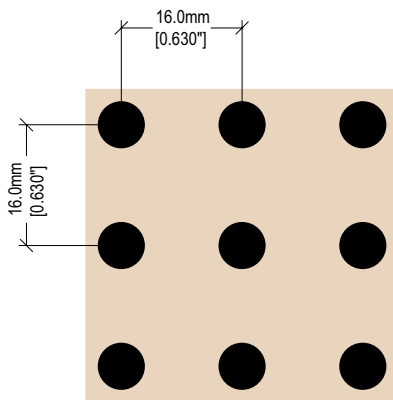
W1 Type: Unperforated
Hole Size: 0mm [0"]
% Open Area: 0%



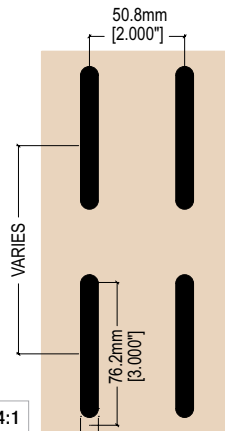
W2 (Rg 6006) Type: Round Straight
Hole Size: 6.0mm [.236"]
% Open Area: 6.0%



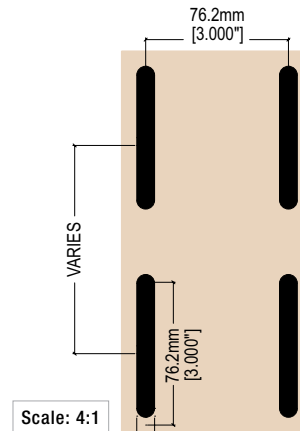
W3 (Rd 6006) Type: Round Diagonal
Hole Size: 6.0mm [.236"]
% Open Area: 6.0%



W4 (Rg 6011) Type: Round Straight
Hole Size: 6.0mm [.236"]
% Open Area: 11.0%



W5 (Lg 9512) Type: Oval Straight
Hole Size: 76.2mm x 9.5mm [3.0" x .375"]
% Open Area: Varies

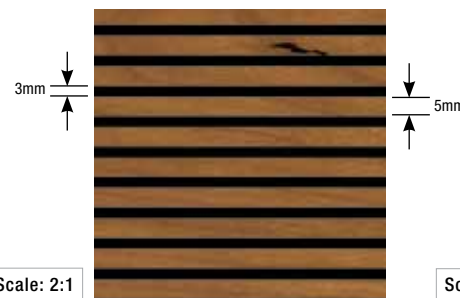


W6 (Lg 9508) Type: Oval Straight
Hole Size: 76.2mm x 9.5mm [3.0" x .375"]
% Open Area: Varies

COMPOSITE WOOD PERFORATIONS – CHanneled

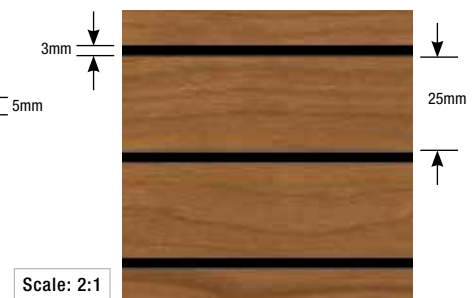


W7 Type: Channeled
Groove Size: 13mm profile with 3mm groove



W8* Type: Channeled
Groove Size: 5mm profile with 3mm groove

* Not available in Images™ Finishes



W9 Type: Channeled
Groove Size: 25mm profile with 3mm groove

WOODWORKS® Upgrade Ceiling Options

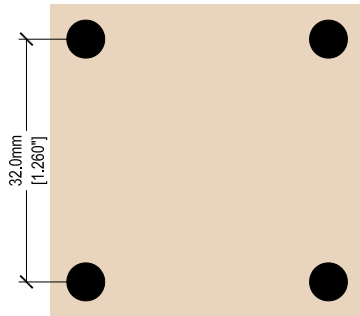
Take our standard WoodWorks® products in standard sizes, and make them distinctively yours by choosing from a variety of custom veneers (including FSC®-certified options) and/or perforations.

CUSTOM VENEERS (PARTIAL LIST)

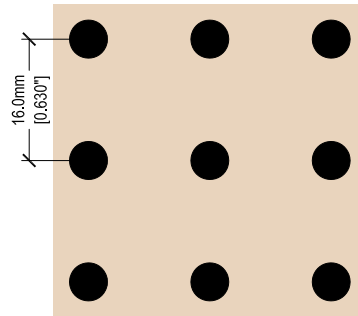
In addition to standard veneers, custom veneers and continuous upturn options are available on many WoodWorks products. The following is a representation of some custom veneers used on recent projects. Veneer management is available to provide many other custom veneer options, and to coordinate with millwork or other interior finishes.



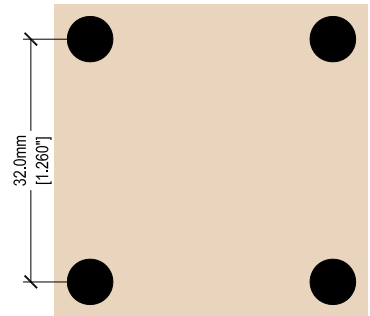
CUSTOM PERFORATIONS Actual 1:1 scale shown



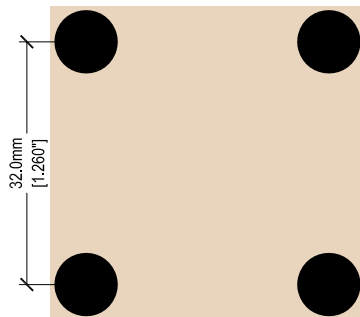
Rg 5002 Type: Round Straight
Hole Size: 5.0mm [.197"]
% Open Area: 2.0%



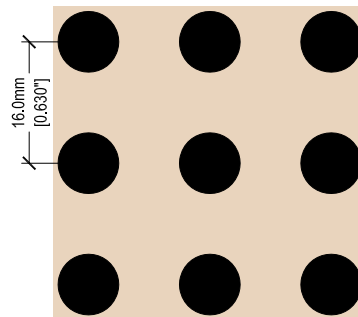
Rg 5008 Type: Round Straight
Hole Size: 5.0mm [.197"]
% Open Area: 8.0%



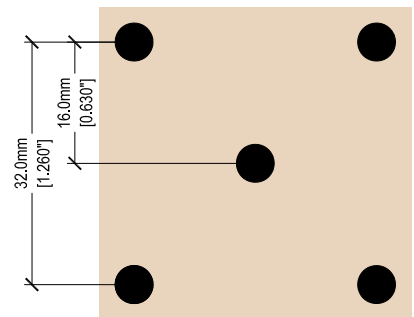
Rg 6003 Type: Round Straight
Hole Size: 6.0mm [.236"]
% Open Area: 3.0%



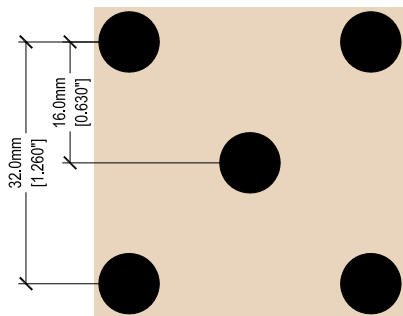
Rg 8005 Type: Round Straight
Hole Size: 8.0mm [.315"]
% Open Area: 5.0%



Rg 8020 Type: Round Straight
Hole Size: 8.0mm [.315"]
% Open Area: 20.0%

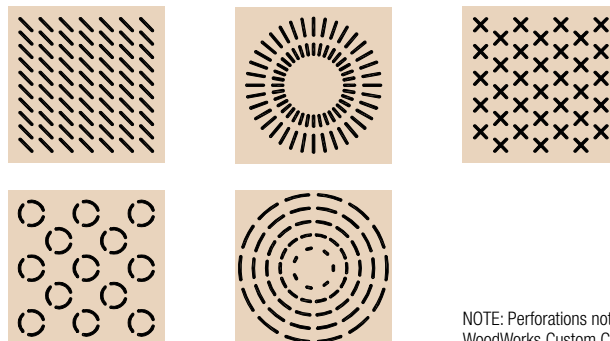


Rd 5004 Type: Round Diagonal
Hole Size: 5.0mm [.197"]
% Open Area: 4.0%



Rd 8010 Type: Round Diagonal
Hole Size: 8.0mm [.315"]
% Open Area: 10.0%

CUSTOM PERFORATION CAPABILITIES Examples represent visual on a 24" x 24" panel



NOTE: Perforations not recommended for WoodWorks Custom Curved panels