

Experience, Above All™



**Armstrong®**  
World Industries

What's New  
Spring 2025



## Always Moving Forward

There's always something new happening at Armstrong. From innovative products and brands, to comprehensive services that bring your design to life, we're constantly evolving to redefine the environment in the spaces where people live, work, learn, heal, and play.

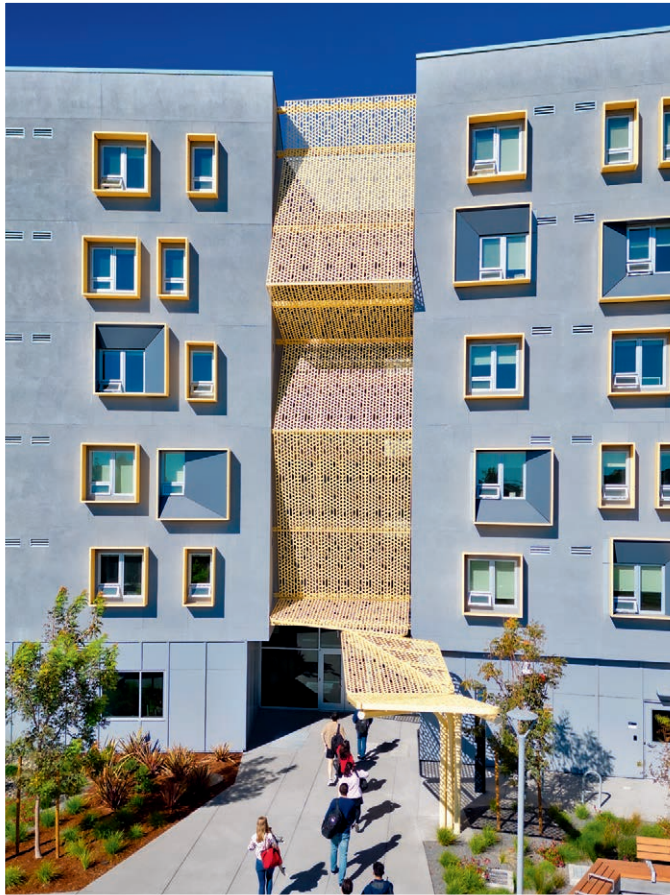
Get inspired.  
See what's new for  
Spring 2025.

**Armstrong®**  
World Industries

ZAHNER® 3form BÖK®  
MODERN

MÓZ™ TURF ARKTURA

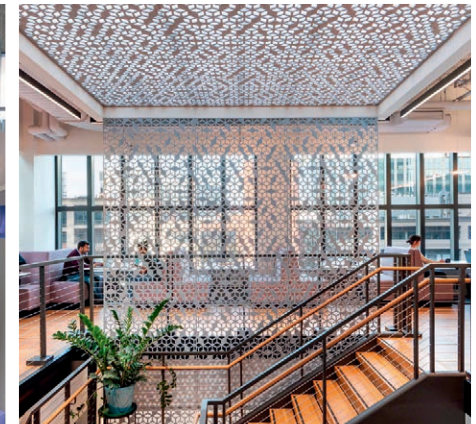




Moz Designs, Vertenza Tri-Dimensional Divider, Laser Cut & Gradients Metal



Zahner, Rainscreen System and Structural Ribbons



Arkura, Vapor® Cora, SoftScreen® Cora and VaporSoft® Cora

TOP: BOK Modern, Bracketless Sun Shades, Custom Wallscreen Systems, Trellis  
ABOVE: Turf Design, Pantheon Acoustic Ceiling Scape  
RIGHT: 3form, LightArt, Acoustic Echo Pendants



# WoodWorks® Grille – Classics

## Western Hemlock Ceiling and Wall Panels

A clear coat finish showcases the natural beauty of the Western Hemlock species.

- 17 standard panel configurations
- Panels are part of the Sustain® portfolio and meet the most stringent industry sustainability compliance standards today
- Integrated system includes coordinating trim and certified lighting solutions
- Made in the U.S.A. of domestic and global content



WoodWorks® Grille – Classics panels in Western Hemlock with LightArt Echo One Pendants





## new WoodWorks® MicroPerf

Veneered Vector® and  
Tegular Panels

MicroPerforated panels combine  
the beauty of natural wood with  
"barely there" perforations.

- Available in 14 standard  
veneer finishes
- Tiny perforations are almost  
invisible when installed at  
standard heights and can  
provide up to 0.85 NRC with  
infill panels
- Part of the FAST134 program –  
ready to ship in 4 weeks or less
- ASTM E84 Class A Fire  
Performance



WoodWorks® Vector® MicroPerforated  
panels in Constants™ Walnut



**FAST134**  
Select Items Ship Fast  
[armstrongceilings.com/fast134](http://armstrongceilings.com/fast134)



## MetalWorks™ Torsion Spring for Behavioral Health

Designed for Wellness  
and Safety

Standard 30" x 30" panels are designed  
with patient safety as the top priority.

- Locking clip prevents unintended panel removal
- Interior panels feature swing down accessibility
- Part of the Sustain™ portfolio and meets the most stringent industry sustainability compliance standards today
- FASTPeel™ panels feature a faster and easier-to-remove protective film



MetalWorks™ Torsion Spring for Behavioral Health in Whitelume





SoundScapes Blades and Shapes Panels in Bourbon Cherry with LightArt LA2 Essentials Fixtures

## SoundScapes® Blades & SoundScapes® Shapes

**new** Wood Look Acoustical  
Ceiling and Wall Panels

Excellent acoustics and abounding layout possibilities are now available in 7 standard wood look visuals.

- Sound absorption up to 2.05 NRC for Blades; up to 1.15 NRC for Shapes
- Made in the U.S.A. of domestic and global content
- Build America, Buy America (BABA) Act compliant
- Select products included in the FAST134 Program – ready to ship in 4 weeks or less



**FAST134**  
Select Items Ship Fast  
armstrongceilings.com/fast134



Brown Sugar  
Walnut



Toffee  
Chestnut



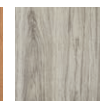
Vanilla  
Ash



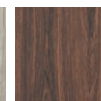
Honey  
Oak



Bourbon  
Cherry



Earl Grey  
Teak



Dark Mocha  
Walnut



CLOCKWISE FROM TOP LEFT:

SoundScapes® Blades

WoodWorks® ACGI Custom Wood Grille

SoundScapes® Blades and 360°  
Painted Grid

SoundScapes® Shapes and Tectum®  
Finale™ PB Wall Panels

CastWorks™ GRG Coffered Ceiling







**CLOCKWISE FROM TOP LEFT:**

Calla® Shapes for DesignFlex® and Suprafine® XM Suspension System

WoodWorks® ACGI Custom Ceiling and Wall Panels and Baffles

Calla® Shapes for DesignFlex® and Suprafine® XM Suspension System





Lyra® PB Planks and Suprafine® XL® Suspension System

WoodWorks® Grille – Classics and Prelude® XL® Suspension System

# Templeok® Energy Saving Ceilings

Maximize Comfort, Minimize Cost

Templeok® Energy Saving Ceilings combine reduced energy costs, exceptional acoustical performance, and increased thermal comfort.

-  • Save up to 50% in tax credits
-  • Save up to 15% energy\*
-  • NRC + CAC = Total Acoustics Performance
-  • Improve thermal comfort

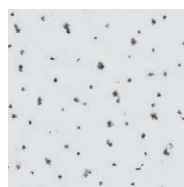
\* Measured cooling energy savings in lab test. Results may vary. See Templeok Technical Guide.



Calla® Templeok



Ultima® Templeok



School Zone® Fine Fissured® Templeok

Ultima® Templeok® panels and Prelude® XL® suspension system







## Axiom® Vector & Axiom Trim for Drywall Grid

### Vertical Curving Capabilities

Create elegant, undulating floating elements with Axiom® vertically-curved trim.

- Available in 2", 4", and 6" profiles to fit a variety of cloud design heights
- Available in any color to trim a variety of floating elements, including but not limited to acoustical, drywall, AcoustiBuilt®, and MetalWorks™ Linear
- Inverted Axiom Vector also available in Effects™ wood-look finishes
- Part of the Sustain™ portfolio and meets the most stringent industry sustainability compliance standards today



# <sup>new</sup> Custom Length ShortSpan®

## Drywall Framing System



Custom-length ShortSpan® tees provide a precise fit for project needs while reducing material waste and labor.

- New custom-length capabilities 5'-14'
- Reduces waste and labor on job site
- Part of the Sustain™ portfolio and meets the most stringent industry sustainability compliance standards today
- Made in the U.S.A.



ShortSpan® Corridor Drywall Framing System







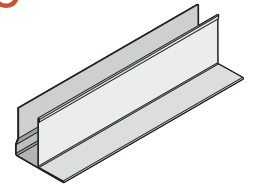
Transition F-Molding with 7/8" Acoustical Flange

## Transition F-Molding with 7/8" Acoustical Flange

**new** Steel Transition Molding for Seismic Solutions

Offers the same labor savings as other FrameAll® molding products – now with seismic compliance.

- Matches the popular 7800 wall angle
- Build America, Buy America (BABA) Act Compliant



Calla® Health Zone™ panels and Clean Room™ suspension system

## Clean Room™ Clear Hold Down Clip (CHDC)

**new** Now available as part of the Sustain™ portfolio.

Clean Room™ Clear Hold Down Clip (CHDC) attaches to top bulb of the suspension system to hold 1/16" to 5/8" lay-in panels in place; helps to prevent ceiling panel fluttering at entryways.

- Now the entire family of Clean Room™ products is part of the portfolio



## Social Connectivity is Back on the Menu

School district collaboration with ProjectWorks® Design & Pre-construction Service boosts lunch participation at Saratoga Springs High School by 15%.

### The Challenge:

Years prior, Saratoga Springs High School converted its gymnasium to a cafeteria. However, the space – which needed to accommodate 500 students during a single lunch period – still had the acoustics of a gym, inefficient use of space, poor traffic flow, and no consideration for COVID-influenced changes that redefined comfort levels for students in large-group settings.

### The Vision:

*A welcoming space that fostered school spirit, infused collegiate sophistication, and encouraged elevated levels of interactivity.*

SoundScapes® Blades and WoodWorks® Grille – Classics



*“The transformation of the high school cafeteria has been amazing. The improved acoustics have not only created a more comfortable and inviting space for students and staff, but they have also significantly reduced noise levels, fostering a better environment for connection during school meals.”*

Dr. Michael Patton,  
Superintendent of Schools,  
Saratoga Springs School District







### The Solution:

Armstrong and the project architect, Mosaic Associates, took three main approaches to the cafeteria design. First, tapping into Armstrong's diverse product portfolios allowed different ceiling panels to define different pockets within the cafeteria. Secondly, all ceiling panel choices incorporated acoustical sound absorption and/or blocking. Lastly, budget was maintained by utilizing ProjectWorks® Design & Pre-construction Service to ensure efficiency and offset custom components with cost-effective standard solutions.

# Experience, Above All™

877 276 7876

Customer Service Representatives

7:45 a.m. to 5:00 p.m. EST

Monday through Friday

**TechLine** – Technical information, detail drawings, CAD design assistance, installation information, other technical services – 8:00 a.m. to 5:30 p.m. EST, Monday through Friday. FAX 800 572 8324 or email: [techline@armstrongceilings.com](mailto:techline@armstrongceilings.com)



[armstrongceilings.com/projectworks](http://armstrongceilings.com/projectworks)

The power of **ProjectWorks**® Design and Pre-construction Service

ProjectWorks offers cutting-edge collaborative design services to ensure your projects are completed with unmatched precision and efficiency.

Receive 2D layouts, material budgets, and detailed 3D Revit® models to speed up project timelines and improve coordination.

Design with confidence.

Partner with ProjectWorks today!

Get started at [armstrongceilings.com/projectworks](http://armstrongceilings.com/projectworks)

**Inspired by what you've seen?**  
**Connect with our team to discuss your project.**

Cover photo: WoodWorks® Grille – Classics panels in Western Hemlock with LightArt Echo One Pendants

Revit® is a registered trademark of Autodesk, Inc.; all other trademarks used herein are the property of AWI Licensing LLC and/or its affiliates. © 2025 AWI Licensing LLC • Printed in the United States of America

[armstrongceilings.com/whatsnew](http://armstrongceilings.com/whatsnew)

BPCS-7358-525



# Armstrong®

World Industries