



Create a sense of well-being with

- Cleaner air
- Disinfectable surfaces
- Brighter, quieter spaces
- Sustainable materials
- Design choices that inspire

What's **NEW**

2021/1 – Design, Lighting,
Details That Make a Difference

A healthy space is ... an inspiring space

ARKTURA
2020



MÓZ DESIGNS
2020



TURF DESIGN
2020



ACGI
2019



Now part of our
WoodWorks® Family

STEEL CEILINGS
2018



Now part of our
MetalWorks™ Family

PLASTERFORM
2018



TECTUM
2017



SIMPLEX
2011



Now part of our
MetalWorks Family

A GROWING PORTFOLIO: MORE MATERIALS, SHAPES FORMS & CAPABILITIES

We're adding more capabilities so you have unlimited design options for your projects. From new materials, like Tectum® panels, Plasterform™ architectural castings, and Felt, to custom design capabilities across our portfolio for a one-of-a-kind, boutique project with the You Inspire™ Solutions Center and now, Arktura, Móz Designs, and Turf Design. And don't forget our ProjectWorks® Design & Pre-construction Service, turning your design vision and project RCP into one efficient, convenient work package. Now, more than ever, we can help you create healthy, inspiring spaces.

Bringing the outdoors in at the Armstrong Living Lab

Living Lab

At Armstrong, we live and breathe healthy spaces, indoors and out. This is our Living Lab, an active space where we explore ways our ceilings and walls can help people be at their best where they live, work, learn, heal, and play.

Clean, controlled air, disinfectable surfaces, quiet, bright surrounding, sustainable materials and inspiring design ... now that's design for healthy spaces.



Armstrong® mineral fiber ceilings are the capstone of a healthy space, bringing 24/7 Defend™ products that improve indoor air quality, acoustics, light reflectance, and sustainability together.

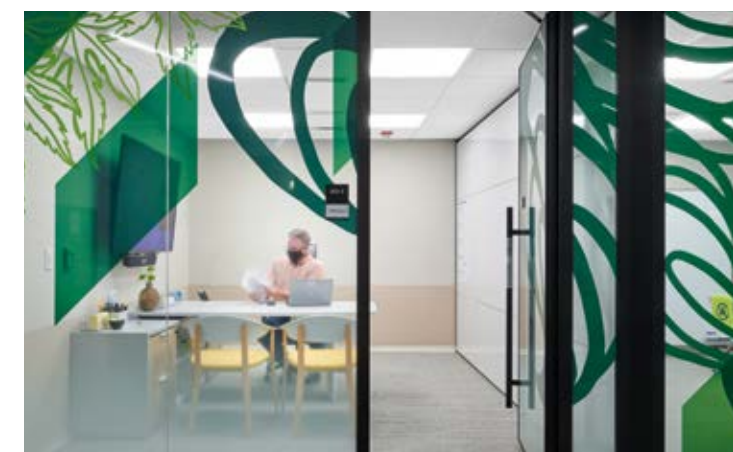
Above: AirAssure™ ceilings reduce air leakage through the ceiling plane. The VidaShield UV24™ air purification system significantly improves air ventilation and filtration systems. The ACOUSTIBuilt® Seamless Acoustical Ceiling System looks like drywall but performs like an acoustical ceiling system.



Biophilic design elements include natural light, warm wood tones, and deep, earthy colors evoking growth and well-being.

Tectum® and MetalWorks™ specialty ceilings, VidaShield UV24™ Air Purifier, and Prelude® 360° open grid.

Building metrics are displayed real-time including air quality, temperature, occupancy density, cleaning, and disinfecting alerts, and other biomechanical data assuring confidence for occupants.

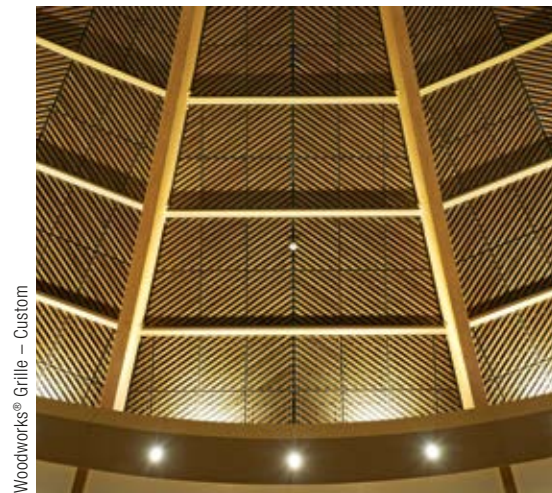


Above: Closed plan offices have Total Acoustics™ panels, offering the ideal combination of sound absorption and sound blocking to ensure speech privacy and quiet concentration areas.

Left: Triangular-shaped mineral fiber Calla® for DesignFlex® ceiling system, with our VidaShield UV24™ air purification system add interest to this unique collaborative space.

WELCOME TO THE LIVING LAB

*We come on the journey with you
from inspiration through installation*



Woodworks® Grille — Custom



Metalworks™ Torsion Spring — Custom

You Inspire™ Solutions Center

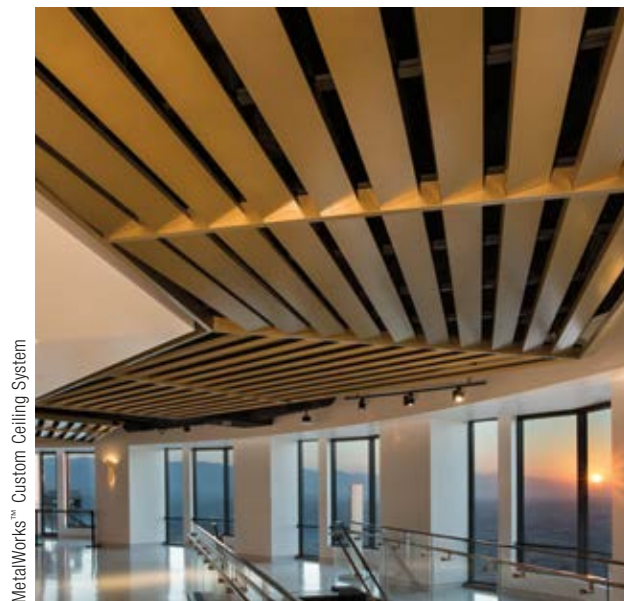
Bring your boutique one-of-a-kind ideas to life with the broadest portfolio of solutions and integrated systems.

Connect with our team of design specialists for free ceiling design support that includes:

- Collaborative design
- Detail and layout drawings
- Specifications
- Budgeting and planning
- Pre-construction assistance
- Installation recommendations

“It is amazing what can be done in a short amount of time. We had some really tight parameters to work with and I really can’t think of a smoother process given all the challenges we were facing with both schedule and cost.”

- Audrey Wu
Project Architect
Gensler,
Los Angeles



MetalWorks™ Custom Ceiling System



Woodworks® Grille — Custom,
and SoundScapes® Blades



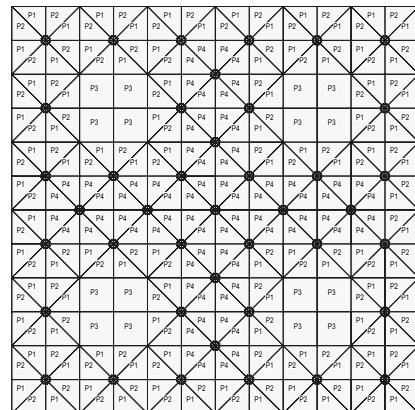
MetalWorks™ Blades — Classics

ONE-OF-A-KIND BOUTIQUE DESIGN SERVICE

Streamline the entire process - from ceiling design to takeoffs and quoting through installation

“ The support that the ProjectWorks staff was able to provide in close collaboration with our firm, the general contractor, and the design team proved to be invaluable in ensuring a timely and successful project delivery. ”

– Brendan O’Neil
Construction Manager
Acoustek, Inc.,
North Dartmouth, MA



MetalWorks™ Torsion Spring Shapes

PROJECTWORKS®

Free Ceiling Design & Pre-Construction Services

- We turn your ceiling design vision and project RCP into one efficient, convenient work package
- Faster, easier estimating – in less than 48 hours
- DesignFlex® Ceilings and MetalWorks™ Torsion Spring Shapes and other specialty ceilings included in ProjectWorks®
- Submit your RCP in AutoCAD® or a Revit® file with included 2D RCP and we’ll create complete drawing details, a comprehensive quote, and a line item bill of materials in 48 hours or less

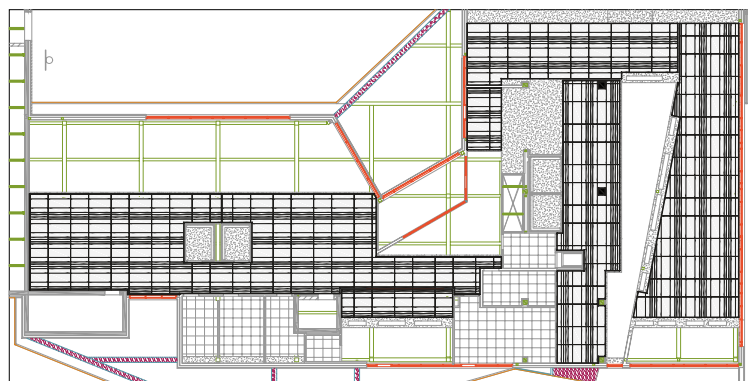
Faster, More Efficient Design for Specifiers

Complete Design-to-Installation Package:

- Quick turnaround time for design
- Lighting and HVAC integration with Armstrong partners' components
- Automated drawing details for suspension systems and accessories
- Custom color application for panels, suspension systems, and perimeter trims
- Budget material pricing
- Integrates design through installation

Faster, Easier Estimating & Takeoffs for Contractors

- Overall RCP dimensioned layout of Armstrong Ceiling Solutions in the project space
- Free pre-construction drawings and takeoffs for your complex and large-scale projects
- Color Plan Layout for ease of visualization when multiple colors are included
- Panel Schedule showing exactly which panels are installed in each location throughout the project space
- Suspension Schedule calls out each standard tee and main beam location
- Hub Schedule shows detailed grid intersections, clips, and perimeter installation
- Complete pre-construction takeoffs including quote with line item bill of materials
- Solve bidding challenges on projects using our most popular mineral fiber options



Calla® Regular Squares and Rectangles

DESIGN & PRE-CONSTRUCTION SERVICE

Design your own unique, custom visual using color and artwork



1" thick Tectum® Create!™ Direct-Attach vertical custom wall panels



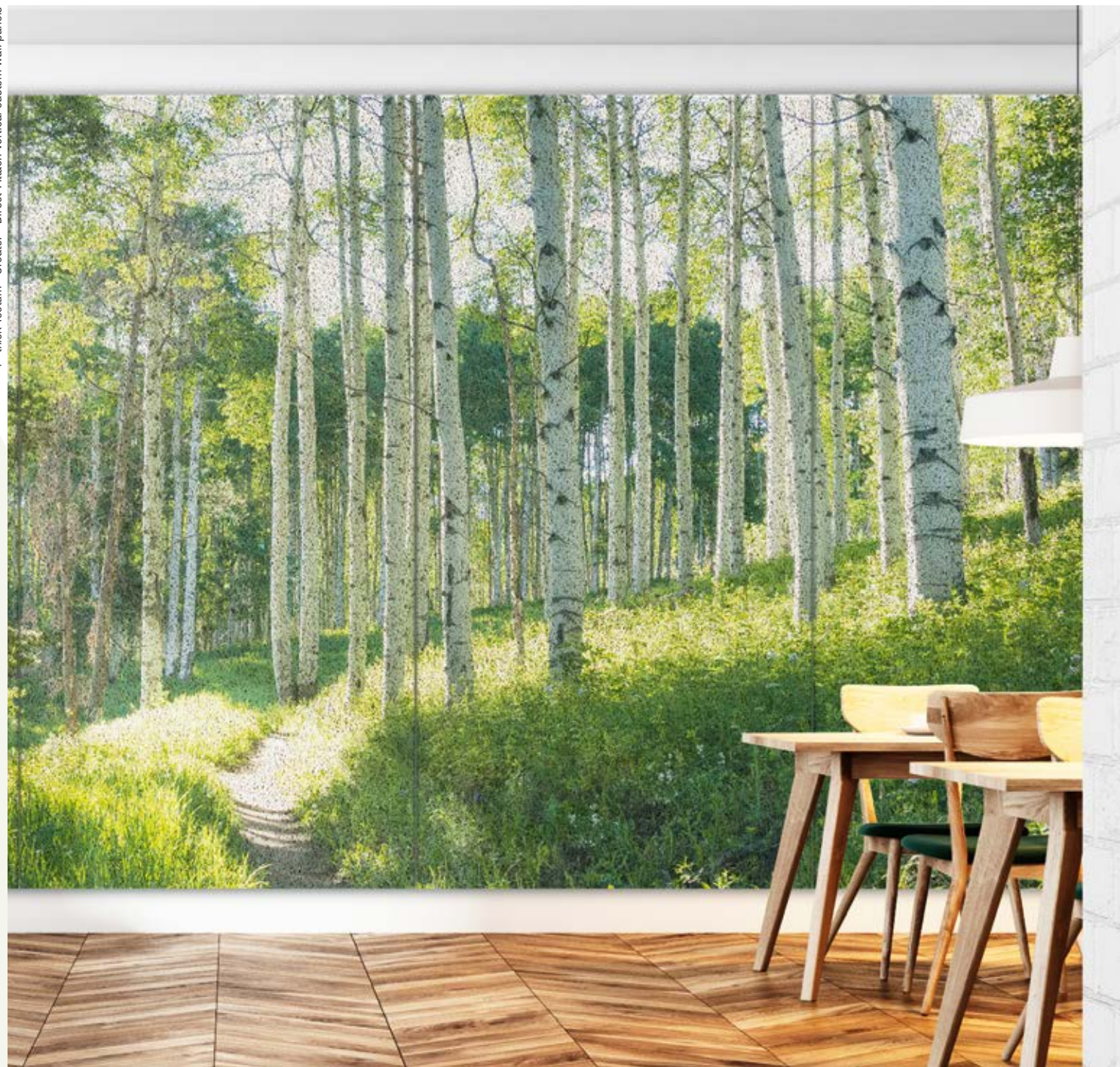
See inset above



new TECTUM® Create!™ Direct-Attach Custom Wall panels

Transform interior spaces with distinctive image depth and personality with texture-rich custom panels

- 1" thick Tectum® Create!™ Direct-Attach custom wall panels can help create beautiful spaces tailored to any aesthetic
- Repeat panel patterns can span wall surfaces in both vertical and horizontal directions
- Excellent sound absorption – NRC up to 0.85 (mounting method dependent)
- Nominal panel sizes include 24" x 48" and 48" x 96" with long and short beveled edges (no additional custom sizes available)
- Panels can be directly attached to a wide variety of interior wall surfaces
- Tectum® panels are part of the Sustain® portfolio, meeting today's most stringent industry sustainability standards
- Design your one-of-a-kind acoustic artwork! To get started, contact ASQuote@armstrongceilings.com



DESIGN OPTIONS

Industrial look for interior spaces in a variety of standard and custom sizes, colors, and patterns

METALWORKS™ Mesh

new Now Available in Larger Panel Sizes

- Large format 24" x 48", 24" x 72", and 24" x 96" lay-in ceiling panels are available as standard items in Lattice and Trellis Expanded Metal, Welded Wire 1 & 2 Cell, and Woven Wire 1 & 2 Cell patterns
- Variety of standard colors available; custom colors also available
- CleanAssure™ family of products – includes disinfectable panels, suspension systems, and trim
- Simple installation – panels lay in standard 15/16" suspension system with borders or finished edges
- Factory-engineered border around panel edges for safe, fast installation into grid system
- Black acoustical infill panels provide high sound absorption and help conceal elements in the plenum

Metalworks™ Mesh 2 Cell Welded Wire panels;
360 Painted Grid; SoundScapes® Shapes triangle panels



Metalworks™ Mesh; Trellis, Lattice, and Scallops panels



DESIGN OPTIONS

*Provides a monolithic,
no-reveal look in a variety of sizes and finishes
for interior and exterior applications*

MetalWorks™ Linear – Synchro™ 6" M1 planks



METALWORKS™ Linear – Synchro™

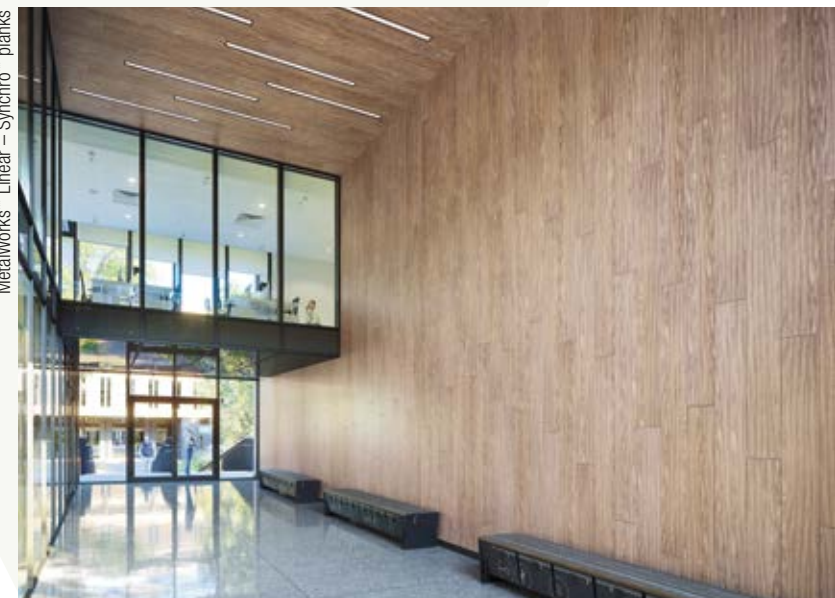


Now Available for Interior Walls and Exterior Ceiling Applications

Smooth, monolithic MetalWorks™ Linear – Synchro™ system now available for interior wall and exterior ceiling applications, along with field-cut linear lighting integration options from partners Backlight® and XAL®.

- Plank width sizes from 2" – 13" for interior and exterior ceiling installations; 4" – 13" for interior walls
- Planks available in four standard metal finishes and 17 standard Effects™ Wood Looks finishes for both interior and exterior applications
- Enhanced sound absorption with M2 planks – 0.70 NRC, same as ceiling panels
- CleanAssure™ family of products – includes disinfectable planks, suspension systems, and trim
- Integrate field-cut linear lighting fixtures from Backlight® srl and XAL®
- MetalWorks™ Linear – Synchro™ for walls gives the desired linear plank look married with a familiar installation system and great wood looks
- Exterior planks tested to meet wind uplift classes 30, 60, and 90
- Ceiling & wall systems engineered and tested for all seismic areas

MetalWorks™ Linear – Synchro™ planks



DESIGN OPTIONS & INTEGRATED LIGHTING

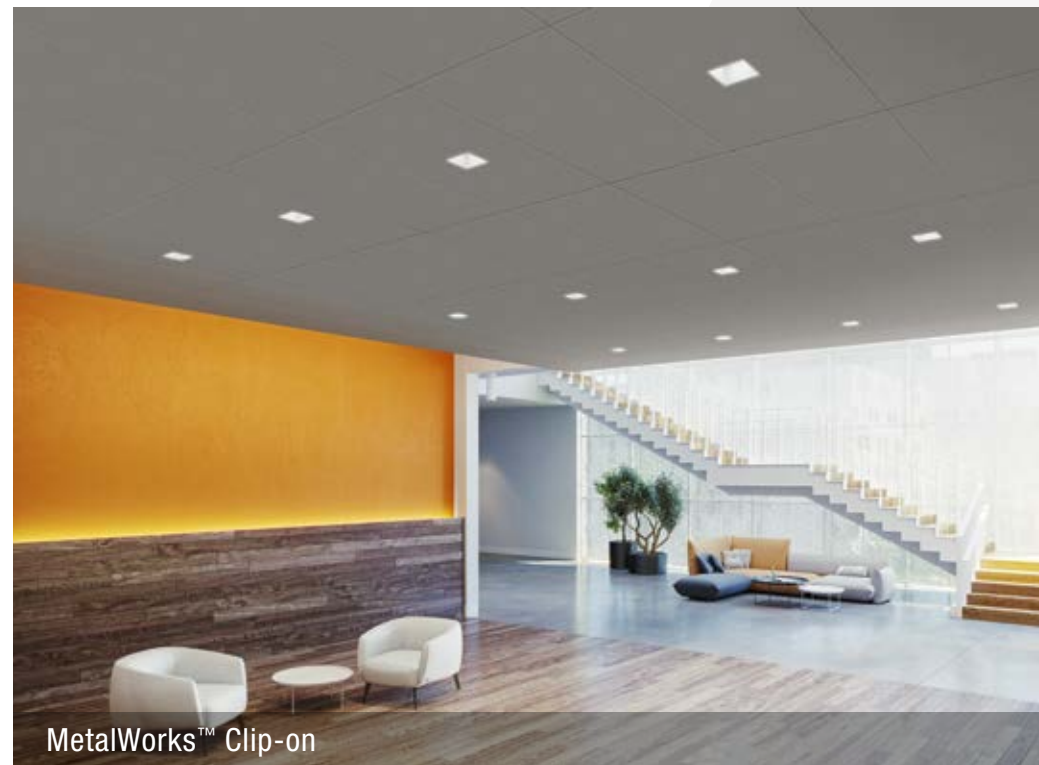
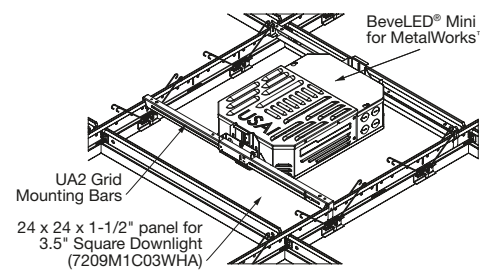
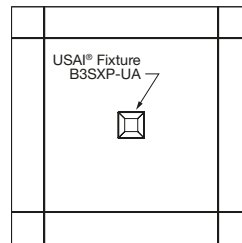
*Perfectly centered fixtures,
perfectly cut tiles - every time*

MetalWorks™ Torsion Spring Shapes center-cut downlight panels



MetalWorks™ Torsion Spring Shapes

USAI
Lighting



MetalWorks™ Clip-on

MetalWorks™ Clip-On center-cut downlight panels

MetalWorks™ Torsion Spring center-cut downlight panels



MetalWorks™ Torsion Spring

new

METALWORKS™ Center-cut Panels for Recessed Downlighting

Precise factory-cut, metal ceiling panels are designed to seamlessly integrate with USAI® BeveLED® square trimless downlights.

- Centered USAI fixtures for flush-fit visual
- Downlight center-cut panels are part of the CleanAssure™ portfolio
- Clean, minimal trimless appearance in durable, factory-cut metal panels
- Pre-cut panels available in FAST134 program
- Pre-engineered and tested for fit and finish in all seismic areas
- Time and labor saving solutions – downlight fixtures are fully adjustable within the system so there is no cutting, no mess, and no need to remove panels
- Part of the Sustain™ portfolio meeting today's most stringent industry sustainability standards



SUSTAIN™
High Performance Sustainable
Ceiling Systems

INTEGRATED LIGHTING

*Light layering design made easy
with a versatile ceiling solution*

new AXIOM® Direct Light Coves

for Specialty, Drywall, and
ACOUSTIBuilt® Ceilings

Pair cove lighting with a wide variety of suspended ceiling options to achieve predictable lighting performance and worry-free design integration with select Armstrong® specialty ceilings, drywall, or ACOUSTIBuilt® ceilings.

- Part of a complete ceiling solution
- Pre-engineered, extruded aluminum light cove ideal for shallow plenum corridors and entryways
- Plug-and-play integration of lighting with partner products XAL® LENO® or Axis Click
- Control the finished aesthetics and maintain consistent fit and finish with this pre-engineered solution
- Part of the Sustain™ portfolio meeting today's most stringent industry sustainability standards

Axiom® Direct Light Cove with drywall or ACOUSTIBuilt® ceilings



Axiom® Direct Light Cove with MetalWorks™ Effects™ panels



Axiom® Knife Edge® Indirect Light Cove with Ultima® panels

AXIOM® Indirect Light Coves

for Specialty,
Drywall, and
ACOUSTIBuilt®
Ceilings

Beautifully enhance light layering in your design with an indirect lighting system that fully integrates panels, suspension system, and lighting in one complementary solution.

Axiom® Indirect Light Cove with Optima® Vector® panels



INTEGRATED LIGHTING

Acoustics and aesthetics

ACOUSTIBuilt® Ceiling System



ACOUSTIBuilt® Seamless Acoustical Ceiling & Wall System

Specify with confidence. We've thought of everything.

- Create the perfect seamless acoustical ceiling and wall system from one end of the building to the other, in wall-to-wall ceilings, cloud, and wall applications above 7'
- Get total noise control and floor plan versatility with Total Acoustics® ceiling panel options: NRC + CAC = Total Acoustics performance
- Similar installation/finishing methods to drywall ceilings
- Installs on Armstrong® Drywall Grid Systems
- Easier to install than acoustical plaster at a lower cost
- Create complex soffit designs with SimpleSoffit™
- Perfect integration with Axiom® Direct Light Coves for ACOUSTIBuilt ceilings – part of a growing line of coves, diffusers, and linear lighting integration options
- Wall Reveal for ACOUSTIBuilt panels provides crisp edge detailing from drywall to ACOUSTIBuilt Wall Panels

ACOUSTIBuilt® Seamless Acoustical Ceiling System, Cloud Application; AXIOM® Classic Trim



DETAILS MAKE THE DIFFERENCE



24 / 7
DEFEND™
Solutions for Healthier,
Safer Spaces

CONTAIN CLEAN PROTECT



TOTAL
ACOUSTICS®
Sound Absorption (NRC)
+ Sound Blocking (CAC)



SUSTAIN®
High Performance Sustainable
Ceiling Systems

Decorative or functional, Wall Reveals add design interest to monolithic surfaces

Wall Reveals for drywall



Wall Reveal transition for drywall (lower) to ACOUSTIBuilt® panels (upper)

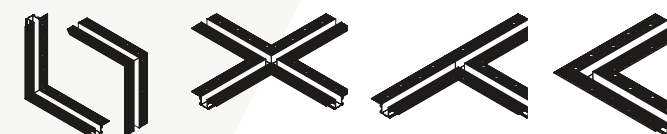


new Armstrong® Wall Reveals

for Drywall and ACOUSTIBuilt® Walls

Wall Reveals create a precise horizontal or vertical design aesthetic using quality aluminum trim for a decorative transition from drywall to drywall or drywall to ACOUSTIBuilt® wall panels.

- Pre-engineered factory-finished extruded aluminum provides crisp edge detail
- Creates separation between drywall or ACOUSTIBuilt wall panels
- Intersection and corner options accommodate Wall Reveal designs to have a change in direction or wrap around corners
- Design with pre-engineered corners, intersections, and 90-degree angles



DETAILS MAKE THE DIFFERENCE

Preserve design intent from concept to installation with discerning details



AXIOM® Core & Shell Shade Pockets

Supports a faster schedule with a versatile solution for any future ceiling system

Guarantee the fit and finish of the ceiling perimeter design with a shade pocket solution that can be installed in the core and shell building phase while providing flexibility for the tenant to choose the final shade and finishing trim.

- Quality control at the perimeter visible from inside and outside the building versus field-fabricated pockets
- High-quality, extruded aluminum solution for an integrated ceiling-to-perimeter transition
- Pre-engineered 3-sided pockets integrate with all ceiling types and conditions, including open plenum
- “Future-proof” system that can receive any current or future roller shade product
- Part of the Sustain™ portfolio meeting the most stringent industry sustainability compliance standards today

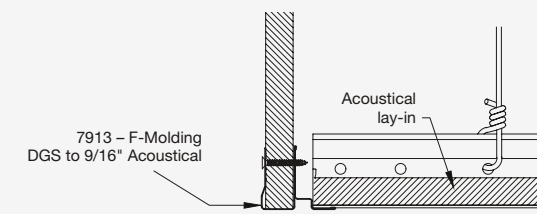


New Transition Moldings

Ensure best design detailing for a seamless transition between an acoustical ceiling and vertical drywall

This pre-engineered transition provides an ideal aesthetic and allows tegular panels to lay flush against the molding.

- Best fit and finish for the perimeter of a space where a 3-5/8" stud drop is typically detailed
- Profile options for 15/16" and 9/16" Armstrong® suspension systems and Drywall Grid System
- Integrated acoustical molding with drywall taping flange
- Part of our portfolio of pre-engineered solutions for common conditions



SIMPLESOFFIT™ Framing for Drywall & ACOUSTIBuilt® Panels

Control the finished aesthetic with a pre-engineered solution that is factory-made to your soffit dimensions

- Maximize structural efficiency while minimizing material use
- Applies modular construction practices to improve project schedules
- Pre-fabricated soffit framing solution made to your precise design specifications
- Promotes healthier, safer jobsites with fewer installers, spaced apart

DETAILS MAKE THE DIFFERENCE

*Complete ceiling solutions for data centers
and other structural ceiling applications*



DynaMax with JLC-Tech TeraLyte™ lighting



DETAILS MAKE THE DIFFERENCE

Data Center Ceiling System



The only complete structural ceiling solution with integrated ceiling tiles, lighting, and diffusers



Data center structural grid solutions are expanding with new lighting and diffuser options, as well as a new standard 48" x 48" Optima® PB Ceiling Panel for DynaMax™ grid.

- Pre-engineered fixtures and components for proper fit and finish in the oversized DynaMax structural suspension system
- Multiple light fixture options from Vode®, JLC-Tech and Axis integrate seamlessly to DynaMax suspension system
- New T-Bar LED™ fixture integration from JLC-Tech for Prelude® XL Max®
- Integrated air diffuser options from Price® for DynaMax
- New 48" x 48" ceiling panel specially sized and engineered for the DynaMax suspension system
- DynaMax and Prelude XL MAX are part of the Sustain™ portfolio meeting today's most stringent industry sustainability standards



Healthy Spaces at Armstrong

Our Living Lab

On the cover: It's our new Living Lab at our Corporate Headquarters in Lancaster, PA. The 10,000 sq. ft., fully-equipped office space occupies the main floor of the Avenue, our customer experience showroom. It's a living, breathing space where new solutions take shape, from systems creating cleaner air and enhancing effectiveness of HVAC systems to piloting new installation methods, materials, shapes and design concepts.

Employees work in the space, providing feedback on a variety of individual and collaborative areas that are great looking, and designed with optimal acoustics, lighting, cleanliness, comfort, and exceptional air quality in mind ... in other words, healthy spaces.

The Living Lab uses digital sensors that connect to the building management system to report metrics such as temperature, air quality, occupancy density, cleaning and disinfecting alerts, and other biomechanical data that is displayed real-time on large monitors to assure people that they can feel confident in their healthy surroundings while working in the building.

The goal of this Living Lab, as well as focus areas in our manufacturing facilities, is to learn how we can help make post-COVID spaces safer, more comfortable, more efficient, and more inspiring places to be.

Revit® is a trademark of Autodesk, Inc.; AutoCAD® is a trademark of Autodesk, Inc., and/or its subsidiaries and/or affiliates, in the United States; Axis and Axis Click are trademarks of Axis Lighting Inc.; Backlight® is a trademark of BACKLIGHT srl; Price® is a trademark of Price Industries Limited; XAL® and Leno® are trademarks of XAL, LLC; Vode® is a trademark of Vode Lighting LLC; USAI® and BevLED® are trademarks of USAI, LLC; T-Bar LED™, JLC-Tech and TERALyte™ are trademarks of JLC-Tech, LLC.; all other trademarks used herein are the property of AWI Licensing LLC and/or its affiliates. © 2021 AWI Licensing LLC • Printed in the United States of America

armstrongceilings.com/commercial

Cover Photo:
Prelude 360° Grid, MetalWorks™
and Tectum® Acoustical Panels,
VidaShield UV24™ Air Purification System

Armstrong®
CEILING & WALL SOLUTIONS