

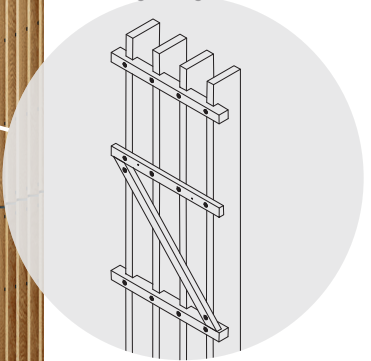


# WOODWORKS® Grille – Forté

## Veneered Wall Panels with Notched Backers



CAD/Revit® drawings at:  
[armstrongceilings.com/cadrevit](http://armstrongceilings.com/cadrevit)



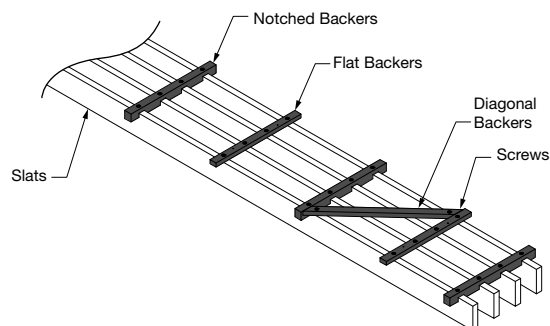
WoodWorks Grille – Forté veneered panels 3/4" W x 2-1/4" H with 4 slats in 4', 6' and 8' lengths in Rift White Oak (NRO)

Ten standard wood veneers offer unparalleled natural beauty through varying species, graining and color.

### KEY SELECTION ATTRIBUTES

- 2 standard panel configurations in 4', 6', and 8' lengths minimize the need for customization, field cutting, and waste
- 10 standard veneers feature various species and cuts for beautiful wood visuals
- Enhanced structural design incorporates notched and diagonal backers to reinforce slat alignment, minimizing the naturally occurring twist of wood, improving handleability during install, and reducing call-backs
- Coordinating veneered trims in 4", 6", and 8" depths
- ASTM E84 Class A fire performance
- Install in the ceiling, on the wall, or create ceiling-to-wall transitions
- Pre-drilled backer holes eliminate splitting for long-term durability
- Centered backers allow for a non-directional install, providing flexibility in install layout and clean accessibility
- CleanAssure™ family of products – includes disinfectable panels, suspension systems, and trim
- Premium options include FSC® Certified options, fleece backer, and flexible backers for wall-to-ceiling transitions
- Custom options include unique panel configurations and lengths and additional species. Contact [ASQuote@armstrongceilings.com](mailto:ASQuote@armstrongceilings.com)

### VENEER PANEL BACKER DETAIL





# WOODWORKS® Grille – Forté

## Veneered Wall Panels with Notched Backers

**LEED® WELL | LBC**

**60% RECYCLED CONTENT**

Calculate sustainability with Green Genie™ [armstrongceilings.com/greengenie](http://armstrongceilings.com/greengenie)

- energy management
- construction waste mgmt
- regional materials
- design for flexibility
- EPD
- recyclable/extended producer resp.
- biobased materials
- FSC® (for wood)
- recycled content
- sourcing of raw materials
- material ingredient reporting
- low emitting materials
- lighting quality
- acoustics

LOCATION DEPENDENT

WITH INFILL PANEL

### VENEER WOOD RANGES

The carefully curated species and veneer cut offer a beautiful natural variation. The images here reflect the visual range that is likely within our product. Darkest to lightest tones may occur within an installation due to the character of wood.



Plain Slice White Maple (NWM)



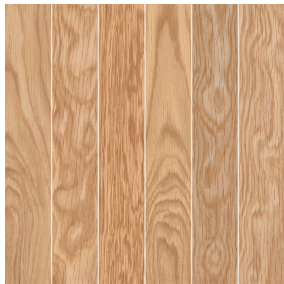
Plain Slice White Ash (NWA)



Vertical Grain Fir (NVF)



Rift White Oak (NRO)



Plain Slice White Oak (NOK)



Plain Slice Cherry (NPC)



Quartered Mahogany (NGM)



Quartered Sapele (NGS)

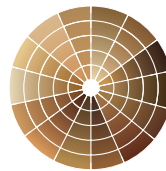


Quartered Walnut (NGW)



Plain Slice Walnut (NWN)

### CUSTOM FINISHES



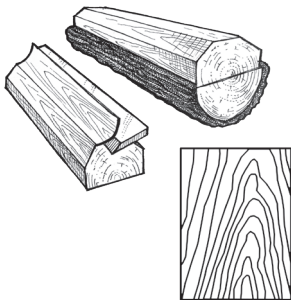
Made-to-order, custom backer colors available.

Custom Wood Species and Finishes Available

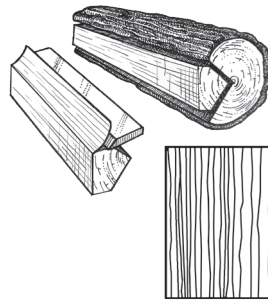
Due to printing limitations, shade may vary from actual product.

### VENEER CUTS

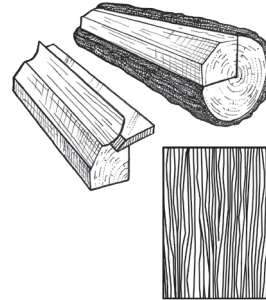
Different cuts of a log will yield different graining visuals. Choose your veneer to achieve your desired look.



**Plain Sliced**  
Produces the well-known cathedral or loop-grain effect.



**Quarter Sliced**  
Produces a striped, often straight-grain effect.



**Rift Sliced**  
Produces a tight, linear grain along the entire length of the veneer.





# WOODWORKS® Grille – Forté

## Veneered Wall Panels with Notched Backers

LEED® WELL™ LBC

**60%** RECYCLED CONTENT

Calculate sustainability with Green Genie™  
armstrongceilings.com/greengenie

energy management	construction waste mgmt	regional materials	design for flexibility	EPD	recyclable/extended producer resp.	biobased materials	FSC® (for wood)	recycled content	sourcing of raw materials	material ingredient reporting	low emitting materials	lighting quality	acoustics
-------------------	-------------------------	--------------------	------------------------	-----	------------------------------------	--------------------	-----------------	------------------	---------------------------	-------------------------------	------------------------	------------------	-----------

LOCATION DEPENDENT

WITH INFILL PANEL

### VISUAL SELECTION 12" width, 3/4" slat (Available in 4', 6', and 8' nominal lengths)

### PERFORMANCE

	Item No. ♦	3/4" W	2-1/2" H	3 slats	Space Between Slats (Nominal)	% Open Area	Lbs./S.F.
WOODWORKS® Grille – Forté Veneered Panels	6333L_S14_ _ _				3-1/4"	81%†	2.1
	6334L_S14_ _ _			4 slats	2-1/4"	75%	2.7

CleanAssure™ Disinfectable Panels

Fog

•

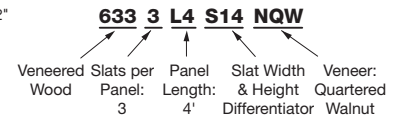
Spray

•

Wipe

•

♦ When specifying or ordering please include the slat length (4, 6, or 8) and finish suffix (e.g. 6333L 4 S14 N Q W – 3 slats, 3/4 x 48 x 2-1/2" in Quartered Walnut veneer).  
NOTE: Panel backers are black; custom backer colors available. For additional species/finish and size options, or curved applications options with flexible backers (special order), contact ASQuote@armstrongceilings.com



### ACCESSORIES

	Item No. ♦	Description	Dimensions Nominal W x L x H (Inches)	Color	Pcs/Ctn
Accessories	7290GBL	Flat Backer Kit	7/8 x 12 x 1/2"	Black	18
Perimeter Trim	6481F07W1H4_ _ _	4" Veneered Trim with 4 Clips (Item 5925)	3/4 x 96 x 4"	All Veneers	N/A
	6481F07W1H6_ _ _	6" Veneered Trim with 4 Clips (Item 5925)	3/4 x 96 x 6"	All Veneers	N/A
	6481F07W1H8_ _ _	8" Veneered Trim with 4 Clips (Item 5925)	3/4 x 96 x 8"	All Veneers	N/A
	5925	Replacement Trim Clips	N/A	Mill Finish	25
	AX_VESTR_ _ _	Axiom® Vector Straight Trim - Recommend in Black 6" and up	N/A	Silver Grey, Black, Gun Metal 10 LF	
	AX_VECUR_ _ _	Axiom Vector Curved Trim - Recommend in Black 6" and up	N/A	Silver Grey, Black, Gun Metal 10 LF	
	6408_ _ _	WoodWorks Edgebanding	1-1/4" x 300"	All Veneers	25 LF

♦ When specifying or ordering please include the 3-letter color suffix that coordinates with your WoodWorks wall: (e.g., 6481F07W1H4 N W M).



PARTITIONS & WALLS



**WOODWORKS® Grille – Forté**  
Veneered Wall Panels with Notched Backers



**LEED® WELL | LBC**

**60% RECYCLED CONTENT**

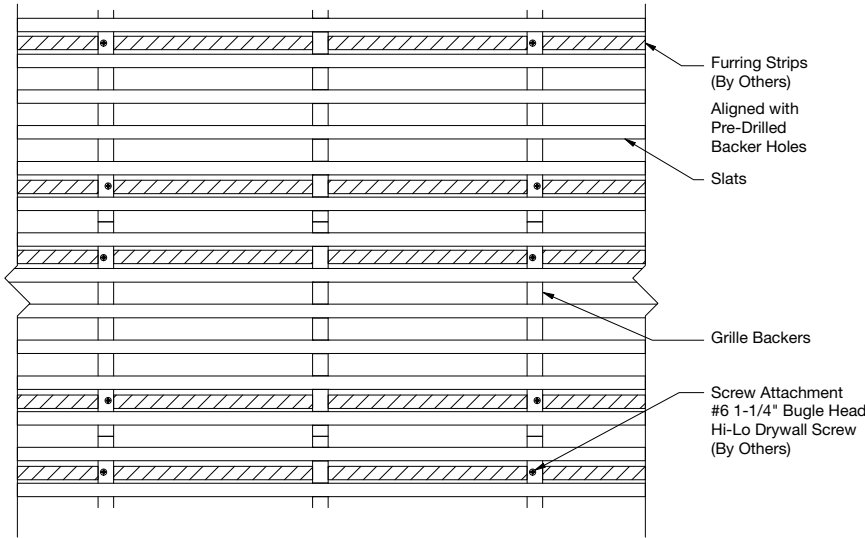
Calculate sustainability with Green Genie™ [armstrongceilings.com/greengenie](http://armstrongceilings.com/greengenie)

energy management	recyclables/extended producer resp.	recycled materials	biobased materials	FSC® (for wood)	recycled content	sourcing of raw materials	material ingredient reporting	low emitting materials	lighting quality	acoustics
construction waste mgmt	regional materials	design for flexibility	EPD							

LOCATION DEPENDENT

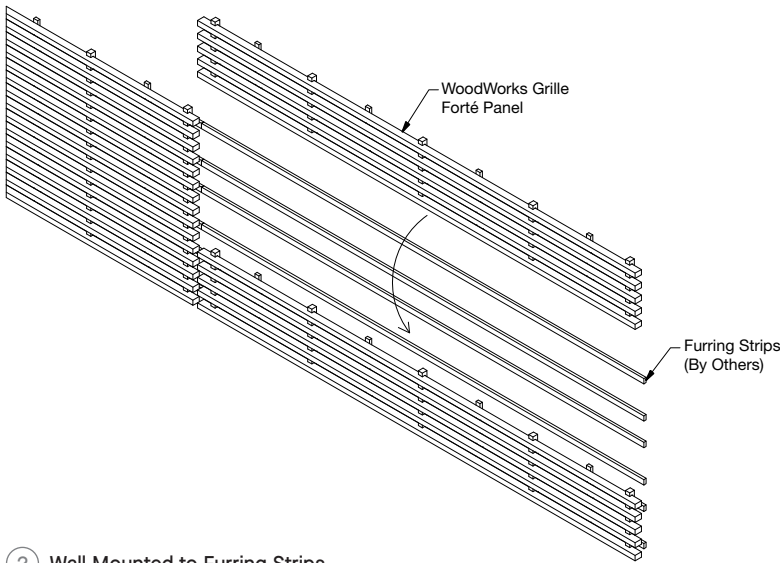
WITH INFILL PANEL

**SYSTEM INSTALLATION DETAILS**

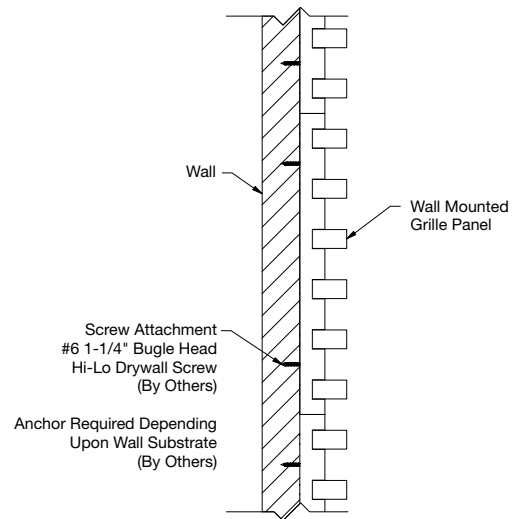


Slat sizes over 2-1/4" are not recommended for wall applications. Contact TechLine for details at 1 877 276-7876.

1 Wall Mount via Furring Strip



2 Wall Mounted to Furring Strips



3 Wall Mounted Panel

**PHYSICAL DATA**

**Material**  
Fire-rated particle board (FRPB) with real wood veneers. Vertical Grain Fir (NVF) is FRPB with a reconstituted veneer.

**Surface Finish**  
Clear or tinted semi-gloss coating.

**Fire Performance**  
Class A: ASTM E84 surface burning characteristics.  
Flame Spread Index 25 or less. Smoke Developed Index 50 or less.  
CAN/ULC S102 surface burning characteristics.  
Flame Spread Rating 25 or less. Smoke Developed Classification 50 or less.

**Design Considerations**  
Variation within panel and from panel to panel may occur due to the natural characteristics of the wood and grain.

When installed, there will be a 1" reveal between panel ends. Consider this when designing and laying out the wall and where this reveal will fall within your wall space.

Custom options include different dimensions, species and finishes.

**Site Conditions**  
It is very important that panels are climatized prior to installation. Relative humidity between 25% and 55%, and temperatures between 50°F and 86°F, must be maintained.

**Ordering Considerations**  
For projects with phased delivery, please coordinate orders. Each separate order is likely to be pulled from different lumber, and therefore will differ in terms of finish range from previous orders.

Be sure to account for extra material that is normally needed for wood installations. When installing WoodWorks® Grille – Forté panels, you should consider ordering at least 5% extra material. Up to 10% more may be needed for odd size or unique installations.

**Seismic Restraint**  
WoodWorks Grille – Forté panels have been engineered, tested, and approved for application in all seismic areas when installed per Armstrong wall installation instructions.

**Cleaning and Disinfecting**  
Cleaning and CDC approved disinfecting options available on [armstrongceilings.com/cleaning](http://armstrongceilings.com/cleaning)

**Warranty**  
Details at [armstrongceilings.com/warranty](http://armstrongceilings.com/warranty)

**Weight**  
Refer to Visual Selection chart.

