

Continuous Load Path (CLP)

Main Beam Component



Continuous Load Path main beam component for Prelude XL

CLP7301 Component

The CLP 6" main beam component integrates with Prelude® XL® suspension system, creating a pathway for the threaded rod to pass through the ceiling plane without unwarranted air penetration.

KEY SELECTION ATTRIBUTES

- Seamlessly integrates with Prelude® XL®
- Allows a threaded rod to connect to the deck without interrupting the ceiling plane
- Designed to accommodate 1/2" and 3/8" threaded rods
- Point loads of up to 1,800 lbs per 3/8" rod and up to 3,300 lbs per 1/2" rod with no weight transferred to the ceiling system
- CleanAssure™ family of products – includes disinfectable panels, suspension systems, and trim (Cleaning and CDC-approved disinfecting options available on armstrongceilings.com/cleaning)
- Helps to manage air flow without unwarranted air penetrations in the ceiling grid or panels
- CLP7301 stabs into the CLP main beams for easy connection
- Combines the ceiling system with a structural

component for hanging cable trays, heavy lighting, or signage

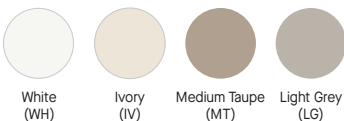
- Utilizes standard Armstrong ceiling panels that do not need to be cut or notched around CLP
- Compatible with DynaMax™ Structural Aluminum Data Center Suspension System
- Reduces the number of hanger wires

TYPICAL APPLICATIONS

- Data Centers
- Signage
- Lighting
- Anywhere conditions require added strength

COLORS AND FINISHES

Standard



†† Capping only

Premium



Powder-Coated Finishes*



NOTE: Powder-coated finishes are also available on select Axiom® Classic, Knife Edge®, and Vector® trim profiles



Available in any color!*

*Colors that are pre-qualified to meet Sustain™ portfolio requirements are available upon request. Other made-to-order colors must be evaluated if sustainability criteria is required. Lead time will increase.



Continuous Load Path (CLP) Main Beam Component

Declare.

LEED WELL | LBC
UP TO **30%** RECYCLED CONTENT

energy management construction waste mgmt regional materials design for flexibility EPD recyclable/extended producer resp. bio-based materials recycled content sourcing of raw materials material ingredient reporting low emitting materials lighting quality acoustics

Calculate sustainability with Green Genie® armstrongceilings.com/greengenie

Well Building Standard™ (WELL) Living Building Challenge® (LBC)

VISUAL SELECTION

PERFORMANCE

PACKAGING

Item No. ♦	Face Profile	Description	Rout Spacing	Dimensions (Inches)	Color	LOAD TEST DATA (LBS./LIN. FT.)		Fire Guard™	Seismic Category DEF	CleanAssure™ Disinfectable Grid			Pieces/ Carton	LFT/ Carton
						L/360 4 Ft.	L/360 5 Ft.			Fog	Spray	Wipe		
Continuous Load Path (CLP) CLP7301	15/16"	N/A	N/A	6 x 15/16"	WH	N/A	N/A	N/A	*	*	*	*	20	10
7396	15/16"	9' 6" Main Beam	6" O.C.	114 x 15/16"	WH, IV, MT, LG, GS, BL, SG, MY, SA, CM, WA, NA, CP, BZ, PW, SL, ZW, ZB	16.5	8.73	N/A	*	*	*	*	20	190
7376	15/16"	7' 6" Main Beam	6" O.C.	90 x 15/16"	WH, IV, MT, LG, GS, BL, SG, MY, SA, CM, WA, NA, CP, BZ, PW, SL, ZW, ZB	16.5	8.73	N/A	*	*	*	*	20	150
Prelude® XL® 7301_ _ 7301HRC	15/16"	12' HD Main Beam	6" O.C.	144 x 15/16 x 1-11/16"	WH, IV, MT, LG, GS, BL, SG, MY, SA, CM, WA, NA, CP, BZ, PW, SL, ZW, ZB	16.73	8.73	N/A	*	*	*	*	20	240
XL7357_ _	15/16"	4' Cross Tee	12"	48 x 15/16 x 1-3/8"	WH, IV, MT, LG, GS, BL, SG, MY, SA, CM, WA, NA, CP, BZ, PW, SL, ZW, ZB	6.78	N/A	N/A	*	*	*	*	60	240
XL7328_ _	15/16"	2' Cross Tee	N/A	60 x 15/16 x 1-11/16"	WH, IV, MT, LG, GS, BL, SG, MY, SA, CM, WA, NA, CP, BZ, PW, SL, ZW, ZB	36.0 @ 2'	N/A	N/A	*	*	*	*	60	120

* Simple Span ** Hanger Wire Support Mid-Span
 † Items available in Standard, Premium, and Blizzard White powder-coated finish
 ♦ Items available in Blizzard White and Charcoal Black powder-coated finish
 ♦ When specifying or ordering items with a color or finish, add the two-letter suffix to the end of the item number (e.g., 7301 L G - Light Grey)

Note: Additional Prelude XL items for TechZone® Ceiling Systems are listed in the TechZone Technical Guide (BPCS-4486). Available online at armstrongceilings.com/techzone

Dots represent high level of performance.

ASTM Class
 HD - Heavy-duty
 ID - Intermediate-duty
 LD - Light-duty

VISUAL SELECTION

PACKAGING

Item No. ♦	Description	Length	(A) Flange	(B) Height	(C) Reveal	(D) Reveal	Pieces/ Carton	LFT/ Carton
7800_ _ 7800HRC	12' Hemmed Angle Molding	144"	7/8"	7/8"	N/A	N/A	30	360

♦ Items available in Standard, Premium, and Blizzard White and Charcoal Black powder-coated finish. When specifying or ordering items with a color or finish, add the two-letter suffix to the end of the item number (e.g., 7301 L G - Light Grey)

SUSPENSION SYSTEMS – DATA CENTERS

Continuous Load Path (CLP) Main Beam Component

Declare.

LEED WELL LBC

UP TO **30% RECYCLED CONTENT**

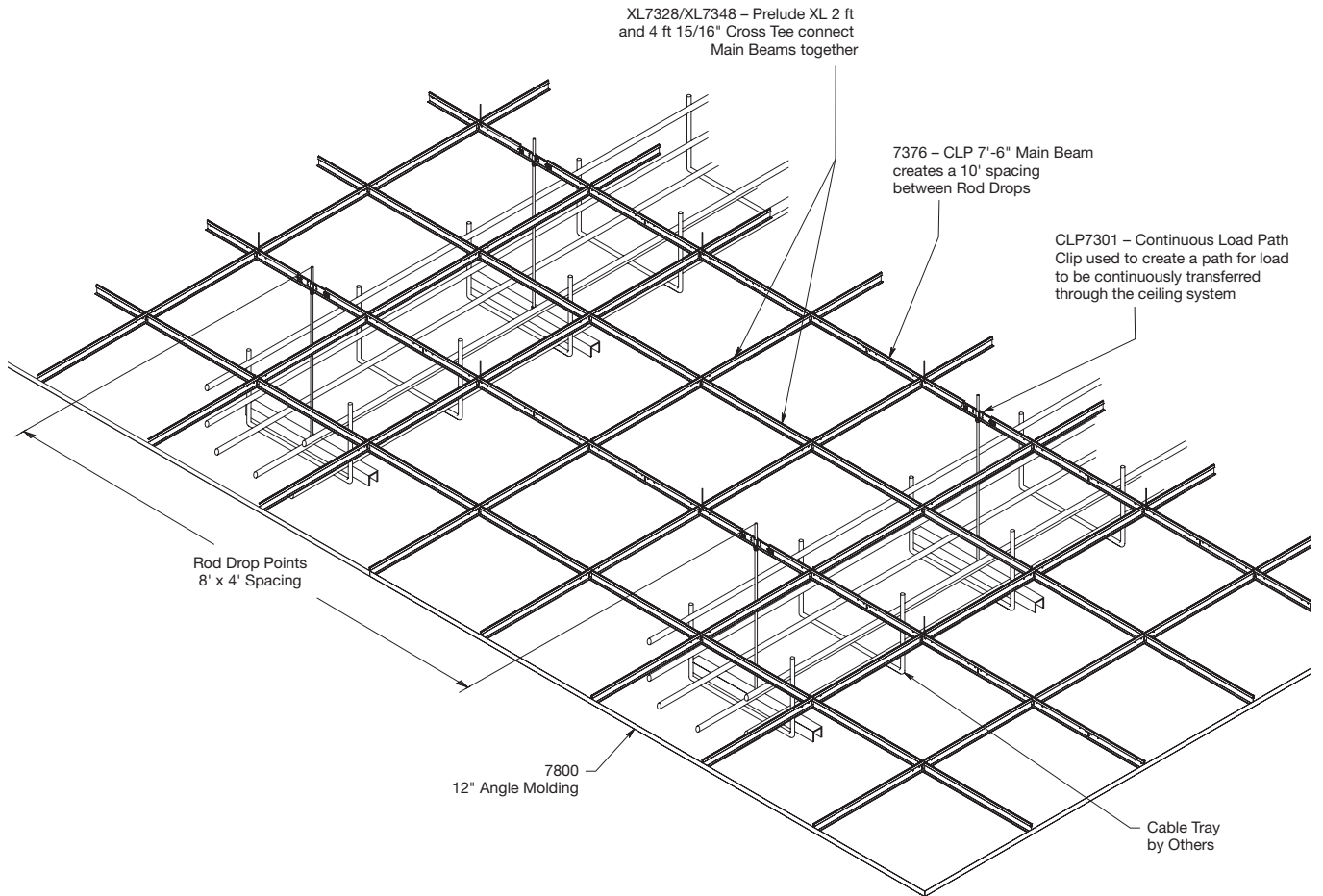
Calculate sustainability with Green Genie armstrongceilings.com/greengenie

energy management	construction waste mgmt	regional materials	design for flexibility	EPD	recyclable/curable producer resp.	biobased materials	recycled content	sourcing of low materials	material ingredient reporting	low emitting/ materials	lighting quality	acoustics
-------------------	-------------------------	--------------------	------------------------	-----	-----------------------------------	--------------------	------------------	---------------------------	-------------------------------	-------------------------	------------------	-----------

LOCATION DEPENDENT

Well Building Standard™ (WELL) Living Building Challenge® (LBC)

DETAILS



SUSPENSION SYSTEMS – DATA CENTERS

Continuous Load Path (CLP) Main Beam Component

Declare.

LEED WELL | LBC

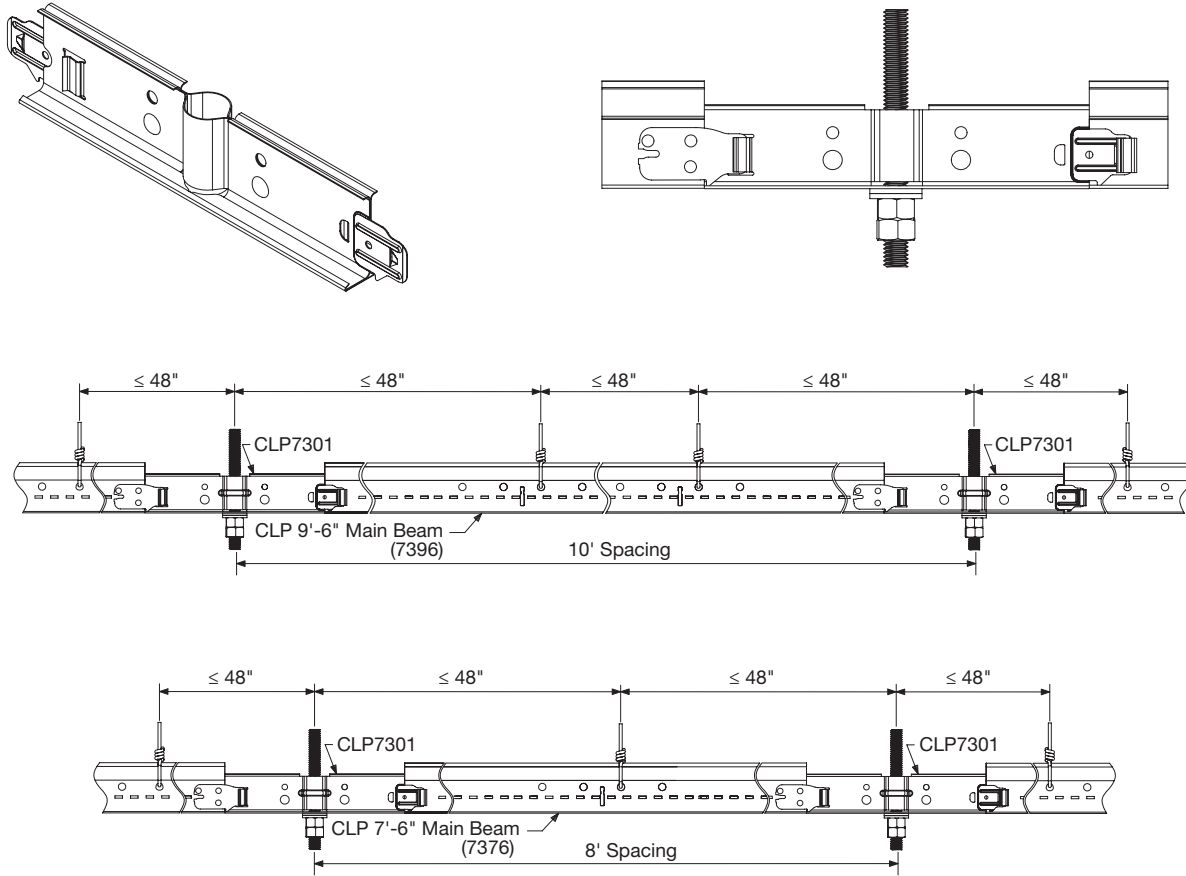
UP TO **30% RECYCLED CONTENT**

energy management
construction waste mgmt
regional materials
design for flexibility
EPD
recyclable/extended producer resp.
biobased materials
recycled content
sourcing of raw materials
material ingredient reporting
low emitting materials
lighting quality
acoustics

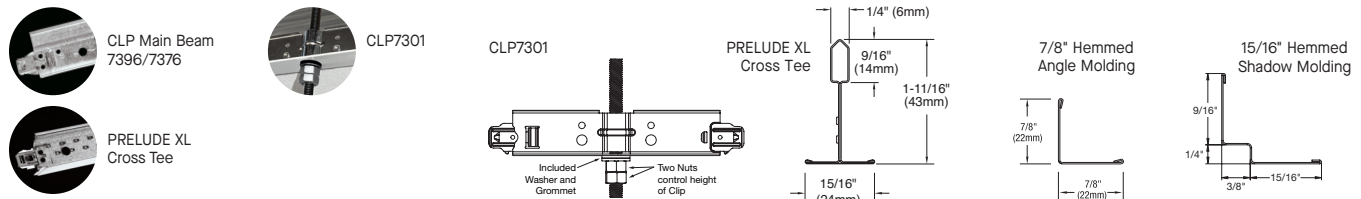
Calculate sustainability with Green Genie™
armstrongceilings.com/greengenie

Well Building Standard™ (WELL)
Living Building Challenge® (LBC)

LOCATION DEPENDENT



CLP MAIN BEAMS FOR PRELUDE® XL®



SEISMIC PERFORMANCE

Main Beams
7396, 7376
Minimum Lbs. To Pull Out Compression/Tension
335.0
330.0

Cross Tees
All XL® cross tees exceed 300 lbs. in both compression and tension.

ICC Reports
For areas under ICC jurisdiction, see ICC evaluation report number ESR-1308 for allowable values and/or conditions of use concerning the suspension system components listed on this page. The report is subject to re-examination, revisions, and possible cancellation.

PHYSICAL DATA

Material
Hot dipped galvanized steel
Surface Finish
Baked polyester paint or powder coated
Manufactured and tested in accordance with ASTM C635

Face Dimension
15/16"
Profile
Exposed tee
Cross Tee/Main Beam Interface
Override

End Detail
Main Beam: Staked-on clip
Cross Tee: Staked-on clip
Duty Classification
Intermediate or Heavy-duty

