

CASTWORKS™

Glass Fiber Reinforced Concrete (GFRC)
architectural forms



CastWorks™ GFRC columns and pilaster



plus capabilities
to do more

armstrongceilings.com/capabilities
See more photos at:
armstrongceilings.com/photogallery

CastWorks™ Glass Fiber Reinforced Concrete (GFRC) is a lightweight portland cement composite material reinforced with glass fibers that is an economical alternative to precast concrete.

KEY SELECTION ATTRIBUTES

- Add durable beauty to the design - cast into any shape or compound curve
- Weighs only 6-8 lbs. per square foot (castings may vary)
- Low maintenance
- 12 standard colors, 2 paint-grade finishes, and custom colors available
- Engineered to reduce installation time and cost
- Exterior and interior use
- Requires joint finishing

TYPICAL APPLICATIONS

- Column Covers
- Friezes & Cornices
- Ceiling & Wall Panels
- Domes
- Finials
- Pediments
- Balustrades
- Wall cladding & rainscreens
- Historical Restoration

COLORS GFRC castings can be field painted to achieve any desired color. Due to printing limitations, shade may vary from actual product.



CASTWORKS™

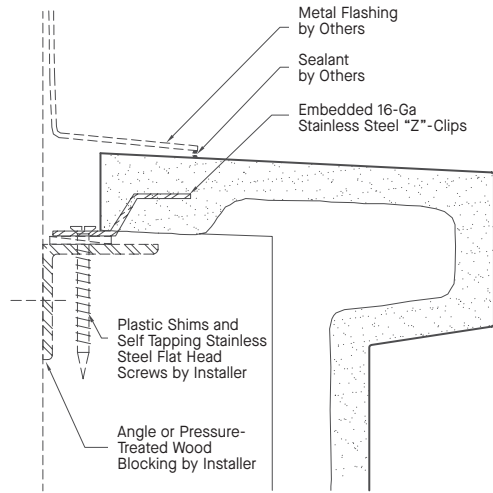
Glass Fiber Reinforced Concrete (GFRC)
architectural forms

LEED® WELL | LBC

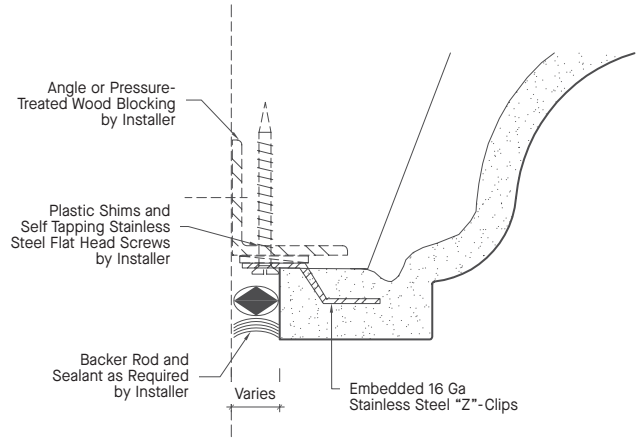
energy management	recyclable/producer resp.
construction waste mgmt	biobased materials
regional materials	recycled content
design for flexibility	sourcing of raw materials
EPD	material ingredient reporting
	low emitting materials
	lighting quality
	acoustics

LOCATION DEPENDENT

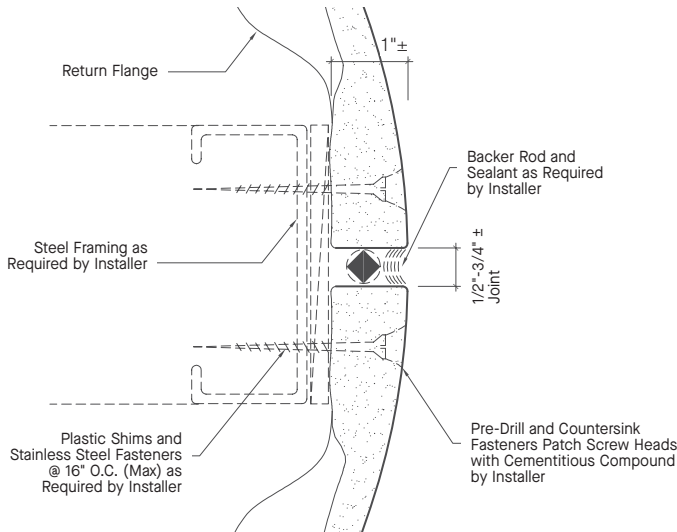
DETAIL DRAWINGS



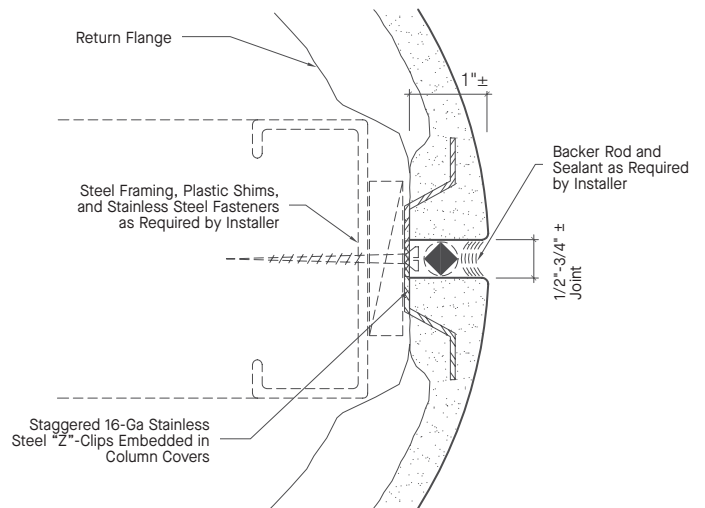
Prefinished GFRC Cornice – Top Connection



Prefinished GFRC Cornice – bottom Connection



Unfinished GFRC Column Joint



Prefinished GFRC Column Joint

PHYSICAL DATA

Material
Glass Fiber Reinforced Concrete (GFRC) is a lightweight composite consisting of portland cement, sand, aggregates, alkali-resistant fiber, polymer, additives, and water.

Surface Finish
GFRC can be supplied in a smooth, paint-grade finish that requires a field-applied coating, or integrally pigmented and sandblasted to achieve a look of stone or precast concrete.

Fire Performance
Class A Fire Performance per ASTM E84.

Installation Considerations
Install CastWorks™ GFRC parts as indicated on approved shop drawings, other recommendations, and the contract requirements.

Use caution and wear appropriate hand, eye, and dust mask protection when handling CastWorks GFRC. Refer to installation instructions for complete details.

Application Considerations
Where traditional building materials require multi-tiers or components, CastWorks GFRC offers part consolidation, minimizing pieces and reducing site labor.

Design Support
For custom design assistance contact ProjectWorks® Design Services or visit armstrongceilings.com/projectworks

Warranty
One (1) Year Limited Warranty. Details at armstrongceilings.com/warranty

Weight
6-8 lbs/SF (may vary depending on part design)