

SOUND.  
THAT WORKS.™



AARP ABBOTT ADVANCED MICRO DEVICES ABBOTT LABORATORIES ABBOTT PARK ABBOTT PARK  
ARRICK GOLD BASF BAXTER INTERNATIONAL BAXTER INTERNATIONAL BAXTER INTERNATIONAL  
CO CITI CLOROX COCA-COLA COMCAST COMCAST COMCAST COMCAST COMCAST  
EUROPEAN INVESTMENT BANK EUROPEAN PARLIAMENT EUROPEAN PARLIAMENT EUROPEAN PARLIAMENT  
GOVERNMENT OF ALBERTA GOVERNMENT OF CANADA GOVERNMENT OF CANADA GOVERNMENT OF CANADA  
SER PERMANENTE KELLOGG'S KELLY SERVICES KELLY SERVICES KELLY SERVICES KELLY SERVICES  
DTRONIC MERCEDES-BENZ MERCK METLIFE METZLER METZLER METZLER METZLER METZLER  
CKER PEROT INVESTMENTS PFIZER PHILIP MORRIS INTERNATIONAL PHILIP MORRIS INTERNATIONAL  
REMENT SYSTEMS OF ALABAMA RIO TINTO ROSS STORES ROSS STORES ROSS STORES ROSS STORES  
AMERITRADE TD BANK TECHNIPFMC TELUS TEXAS INSTRUMENTS TEXAS INSTRUMENTS TEXAS INSTRUMENTS  
RNERMEDIA WASTE MANAGEMENT WAWANESA INSURANCE WAWANESA INSURANCE WAWANESA INSURANCE  
OM AEGON AETNA AGILENT AIG AIR CANADA AIR PRODUCTS AIR PRODUCTS AIR PRODUCTS AIR PRODUCTS  
ET BC HYDRO BDC BDO BNP PARIBAS FORTIS BNY MELLON BOEING BOEING BOEING BOEING BOEING  
PER KEYCORP KIMBERLY-CLARK KODAK KPMG KRAFT L3 TECHNOLOGIES L3 TECHNOLOGIES L3 TECHNOLOGIES  
AL BANK OF CANADA RSM INTERNATIONAL SAFEWAY SAILPOINT SAILPOINT SAILPOINT SAILPOINT  
BERTA MOTOR ASSOCIATION ALCOA ALLIANZ ALLINA ALLSTATE ANAHEIM ANAHEIM ANAHEIM ANAHEIM  
IBB BRITISH AMERICAN TOBACCO PLC CAMPBELL'S CAPITAL ONE CAPITAL ONE CAPITAL ONE CAPITAL ONE  
M INTERNATIONAL SAFEWAY SAILPOINT SANTANDER GROUP SAP SAP SAP SAP SAP SAP SAP SAP  
ANSAMERICA TRAVELERS UNIVERSITY OF MINNESOTA UNUM GROUP UNUM GROUP UNUM GROUP UNUM GROUP





## SOUND MASKING

Today's interiors often feature very low levels of background sound, leaving occupants trying to work in 'pin-drop' environments in which they can easily hear conversations and noises. Although we tend to describe them as noisy, these spaces are actually too silent. Their background sound level needs to be raised in a controlled way, so that it's capable of covering disturbances.

A sound's ability to cover other sounds is an effect we often experience—due to running water, rustling leaves or the murmur of a crowd, for example—but rarely think about in the context of the indoor environment. Yet, when handled correctly, a non-informational broadband sound not only minimizes the disruptive impact of noise and protects the privacy of conversation, but does so unobtrusively.

That's sound masking's role. It's an engineered sound of the type that forms the backdrop of our daily lives—perfected for our acoustic comfort.

## OUR COMMITMENT

Perfection is the goal we've pursued throughout our 40-year history.

Why? Because the benefits a sound masking system delivers depend on its ability to create the required masking spectrum or 'curve' throughout your space.

The more the sound deviates from that curve, the less effective and less comfortable it becomes. And even small differences mean big changes in results. Each decibel decrease in overall masking volume can reduce performance by 10%. Failing in a key frequency can reduce it by 5%. So, precision and consistency are essential.

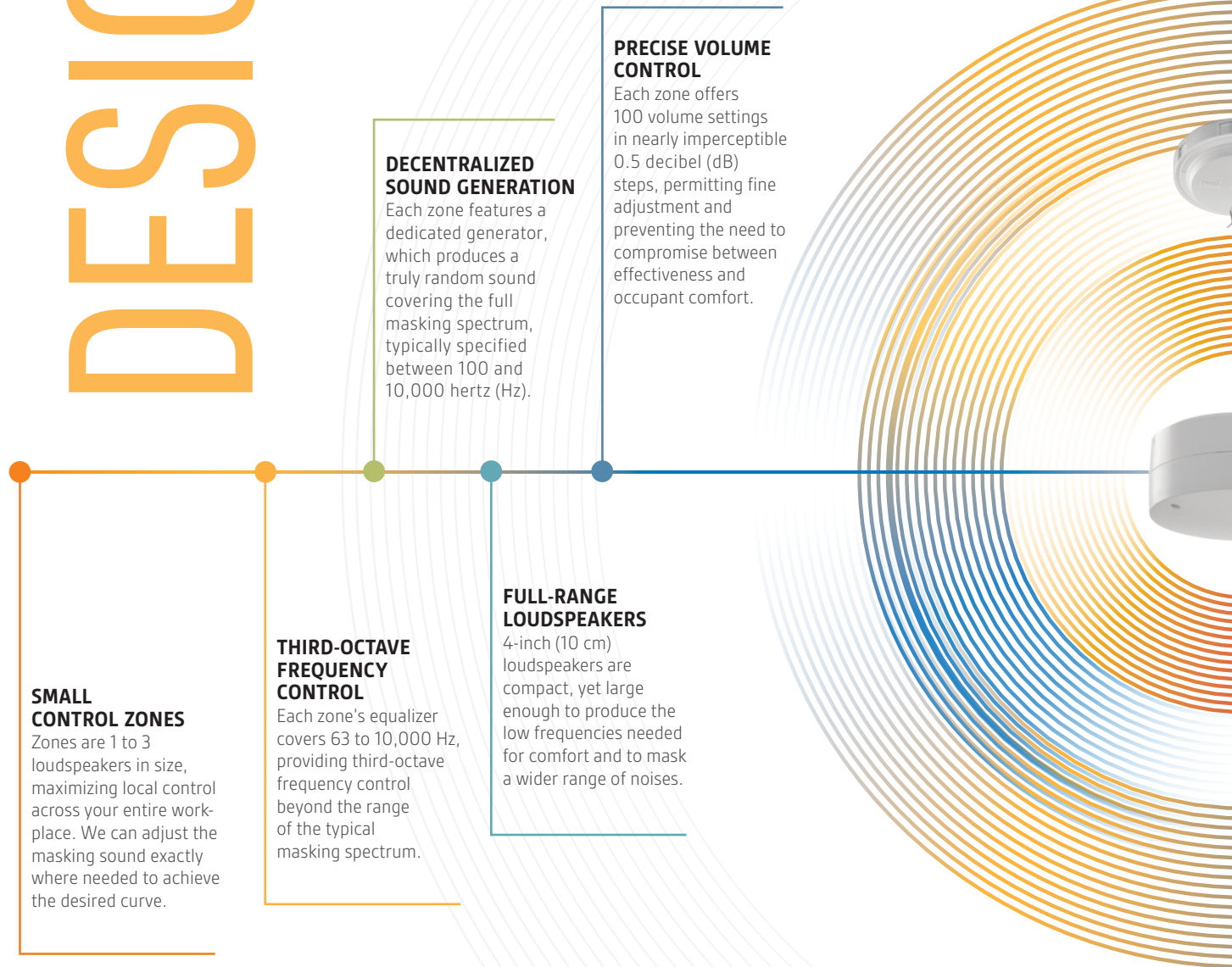
How do we deliver sound that works? By using all the tools in the toolbox.

# DESIGNED RIGHT

A masking system's performance is heavily influenced by the size of its control zones—groups of loudspeakers for which a technician can establish individual volume and frequency settings. The smaller the zones, the more test and adjustment points the design offers.

The LogiSon Acoustic Network exclusively uses a *networked-*

*decentralized* architecture, meaning its control zones are between one and three loudspeakers in size, covering an area of 225 to 675 ft<sup>2</sup> (21 to 63 m<sup>2</sup>). Using single loudspeaker zones provides optimal control. Expanding to three loudspeakers per zone offers a budget-friendly compromise for open plans, without risking the tuning challenges and resulting performance sacrifices exhibited by larger zones.



### SMALL CONTROL ZONES

Zones are 1 to 3 loudspeakers in size, maximizing local control across your entire workplace. We can adjust the masking sound exactly where needed to achieve the desired curve.

### DECENTRALIZED SOUND GENERATION

Each zone features a dedicated generator, which produces a truly random sound covering the full masking spectrum, typically specified between 100 and 10,000 hertz (Hz).

### PRECISE VOLUME CONTROL

Each zone offers 100 volume settings in nearly imperceptible 0.5 decibel (dB) steps, permitting fine adjustment and preventing the need to compromise between effectiveness and occupant comfort.

### THIRD-OCTAVE FREQUENCY CONTROL

Each zone's equalizer covers 63 to 10,000 Hz, providing third-octave frequency control beyond the range of the typical masking spectrum.

### FULL-RANGE LOUSPEAKERS

4-inch (10 cm) loudspeakers are compact, yet large enough to produce the low frequencies needed for comfort and to mask a wider range of noises.

## WHY INVEST IN ACOUSTICS?



85%

Of an organization's expenses are related to people



88%

Of employees say focus work is the most critical aspect of their job



#1

Lack of speech privacy is the greatest source of employee dissatisfaction



79%

Of employees say noise makes it difficult to concentrate

Because the sound interacts with various elements within the facility's interior, no masking system can consistently achieve the desired effect from the moment it's powered on.

Successfully delivering masking across your space is only possible if the sound is professionally adjusted or 'tuned' post-installation to meet the required spectrum—called a curve. The more precisely and consistently the curve is met, the better your result.

While others might take shortcuts—because this process is time-consuming, they haven't been properly trained or mistakenly believe direct-field loudspeakers eliminate the need for it—LogiSon technicians use precision sound analyzers meeting Type 1 standards and follow detailed written procedures. They measure at seated ear height, tuning within each closed room and every 225 to 675 ft<sup>2</sup> (21 to 63 m<sup>2</sup>) of open space. And they provide you with a written report of the results.



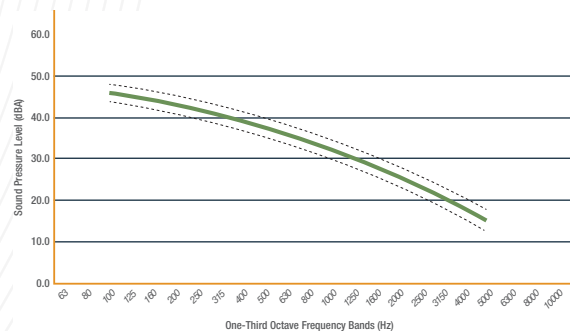
# TUNED RIGHT

## AUTO-TUNING SOFTWARE

We also equip our technicians with TARGET—an application that third-octave tunes each small control zone to the desired curve in a matter of seconds, and with a previously unachievable level of precision.

## THE CURVE

The LogiSon Acoustic Network's output is typically tuned to meet an independently-proven curve provided by the National Research Council (NRC). However, TARGET can also tune to your acoustician's preferred spectrum.



## APPLICATIONS

OFFICES • BANKS • CALL CENTERS • COURTHOUSES • DEALERSHIPS • HOSPITALS • LAW FIRMS  
LAW ENFORCEMENT AGENCIES • LEASED & COWORKING SPACES • LIBRARIES • SCHOOLS  
MEDICAL & DENTAL CLINICS • MILITARY FACILITIES • SENIORS RESIDENCES • WORSHIP FACILITIES

Seeking a hotel solution?  
Ask us about MODIO™  
Guestroom Acoustic Control.  
[www.modio.audio](http://www.modio.audio)

Now that we've described how we provide more consistent, comfortable and effective masking, we can tell you about a few of the other features and functions our clients use every day to enhance the system's value and their acoustic comfort.

## FEATURES

- The LogiSon Acoustic Network's architecture is easily scaled to accommodate facilities of all sizes, from a single office to a multi-building campus.
- Conveniently manage settings from hardware or software. Ease of future reconfiguration reduces lifecycle costs while ensuring peak performance.
- Activate a gradual ramp-up for retrofits. From that point, a sophisticated timer schedules the masking level to match expected occupancy.
- Play paging and music over the same loudspeakers. Integrated technology reduces the space typically needed for audio equipment. Create and change digital paging zones, as needed.
- Offer occupants on-demand control of masking and paging in private offices and meeting rooms.
- Performance is monitored 24/7, down to individual loudspeakers.

For more details, see the *LogiSon Product Catalogue*.

## APPEARANCE

While the LogiSon Acoustic Network is typically installed above a suspended ceiling, its contemporary design and single line of cable also makes it the best choice for open interiors. Components are available in white and charcoal grey.

## SUPPORT

The LogiSon Acoustic Network is exclusively provided through a global network of select distributors whose core focus is sound masking. Their experience with this technology ranges from a decade to more than thirty-five years. They're uniquely positioned to provide an exceptional level of customer service from start to finish, as well as ongoing support.

To contact the representative nearest you, visit [logison.com](http://logison.com).

FACILITY  
FLEXIBILITY  
ENHANCE WORKPLACE CULTURE  
SUPPORT FOCUS

QUICK ROI

INCREASE PRODUCTIVITY

CONTROL NOISE  
LOWER PROJECT COSTS

IMPROVE SPEECH PRIVACY  
BOOST COMFORT & WELLNESS



SOUND MASKING . PAGING . MUSIC .



[www.logison.com](http://www.logison.com)